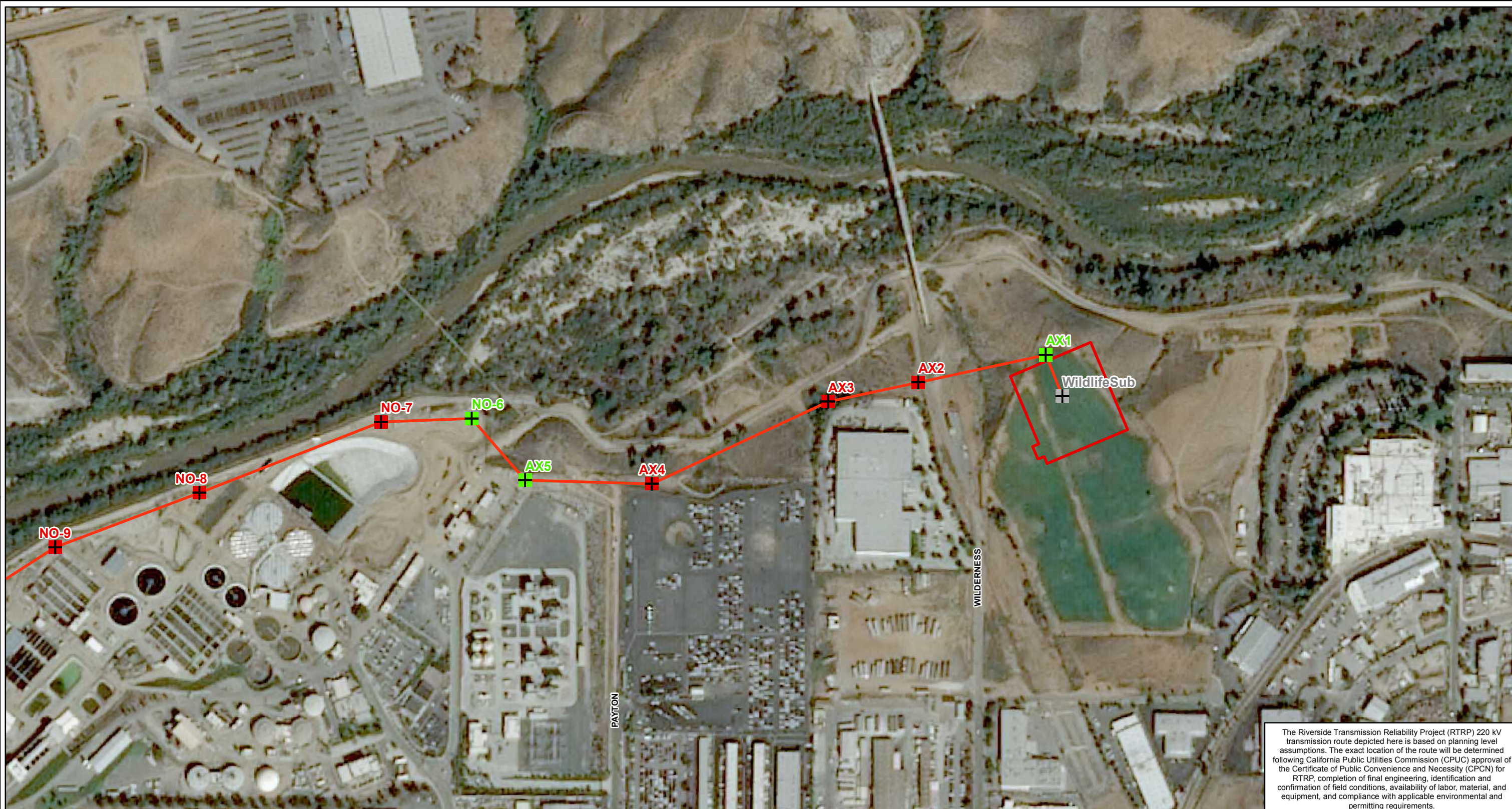







Path: P:\PROJECTS\MPO - Projects\Riverside Transmission Reliability Project_WLD.Dwg\CPUCC20161201_CPIUC_20161201.mxd

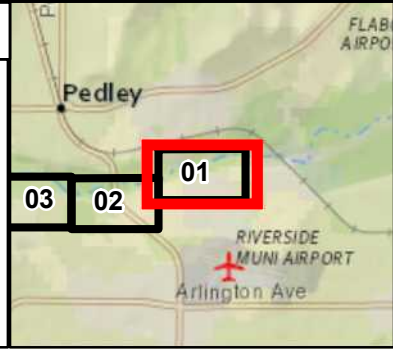


The Riverside Transmission Reliability Project (RTRP) 220 kV transmission route depicted here is based on planning level assumptions. The exact location of the route will be determined following California Public Utilities Commission (CPUC) approval of the Certificate of Public Convenience and Necessity (CPCN) for RTRP, completion of final engineering, identification and confirmation of field conditions, availability of labor, material, and equipment, and compliance with applicable environmental and permitting requirements.

Riverside Transmission Reliability Project Hybrid Route

Proposed Transmission Structures Proposed Transmission Alignment

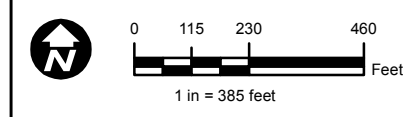
-  Tubular Steel Pole (TSP)
-  Lattice Steel Tower (LST)
-  Rack
-  Overhead Proposed Alignment
-  Wildlife Substation Area



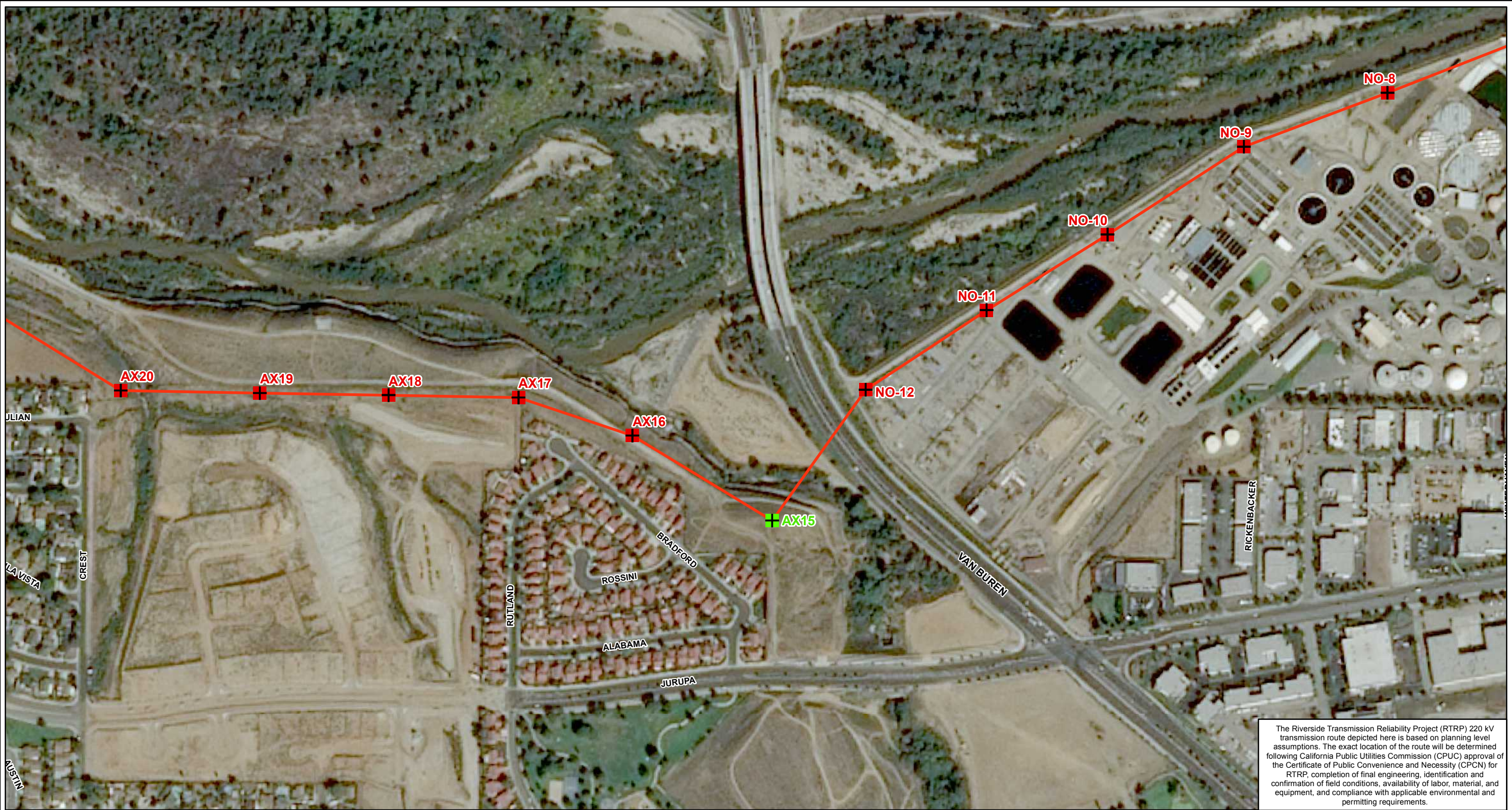
Date: 12/1/2016
 File Name: RTRP_CPUC_20161201.mxd
 Version #: 1

Features depicted herein are planning level accuracy, and intended for informational purposes only. Distances and locations may be distorted at this scale. Always consult with the proper legal documents or agencies regarding such features. Real Properties Department.
 Thomas Bros. Maps is a registered trademark of Rand McNally & Company. Reproduced with permission granted by Rand McNally & Company. © Rand McNally & Company. All rights reserved.

Service Layer Credits: Content may not reflect National Geographic's current map policy. Sources: National Geographic, Esri, DeLorme, HERE, UNEP-WCMC, USGS, NASA, ESA, METI, NRCAN, GEBCO, NOAA, increment P Corp.



Path: P:\PROJECTS\MPO - Projects\Riverside Transmission Reliability Project - WLD.Dat\CPU\C20161201\CPU_C_20161201.mxd



The Riverside Transmission Reliability Project (RTRP) 220 kV transmission route depicted here is based on planning level assumptions. The exact location of the route will be determined following California Public Utilities Commission (CPUC) approval of the Certificate of Public Convenience and Necessity (CPCN) for RTRP, completion of final engineering, identification and confirmation of field conditions, availability of labor, material, and equipment, and compliance with applicable environmental and permitting requirements.

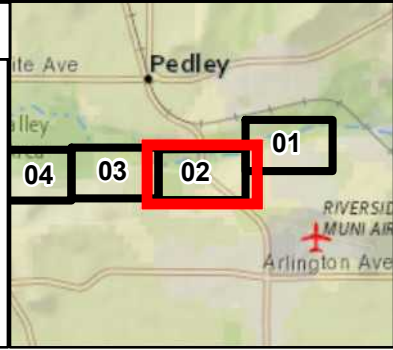
Riverside Transmission Reliability Project Hybrid Route

Proposed Transmission Structures

- Tubular Steel Pole (TSP)
- Lattice Steel Tower (LST)

Proposed Transmission Alignment

- Overhead Proposed Alignment

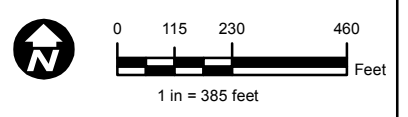


Date: 12/1/2016
 File Name: RTRP_CPUC_20161201.mxd
 Version #: 1

Features depicted herein are planning level accuracy, and intended for informational purposes only. Distances and locations may be distorted at this scale. Always consult with the proper legal documents or agencies regarding such features. Real Properties Department.

Thomas Bros. Maps is a registered trademark of Rand McNally & Company. Reproduced with permission granted by Rand McNally & Company. © Rand McNally & Company. All rights reserved.

Service Layer Credits: Content may not reflect National Geographic's current map policy. Sources: National Geographic, Esri, DeLorme, HERE, UNEP-WCMC, USGS, NASA, ESA, METI, NRCAN, GEBCO, NOAA, increment P Corp.



Path: P:\PROJECTS\MPO - Projects\Riverside Transmission Reliability Project_WLD Data\CPUCC20161201\CPUCC20161201.mxd



The Riverside Transmission Reliability Project (RTRP) 220 kV transmission route depicted here is based on planning level assumptions. The exact location of the route will be determined following California Public Utilities Commission (CPUC) approval of the Certificate of Public Convenience and Necessity (CPCN) for RTRP, completion of final engineering, identification and confirmation of field conditions, availability of labor, material, and equipment, and compliance with applicable environmental and permitting requirements.

Riverside Transmission Reliability Project Hybrid Route

Proposed Transmission Structures

- Tubular Steel Pole (TSP)
- Lattice Steel Tower (LST)

Proposed Transmission Alignment

- Overhead Proposed Alignment

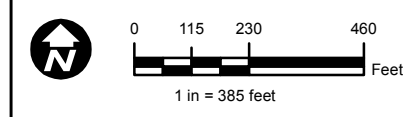


Date: 12/1/2016
 File Name: RTRP_CPUC_20161201.mxd
 Version #: 1

Features depicted herein are planning level accuracy, and intended for informational purposes only. Distances and locations may be distorted at this scale. Always consult with the proper legal documents or agencies regarding such features. Real Properties Department.

Thomas Bros. Maps is a registered trademark of Rand McNally & Company. Reproduced with permission granted by Rand McNally & Company. © Rand McNally & Company. All rights reserved.

Service Layer Credits: Content may not reflect National Geographic's current map policy. Sources: National Geographic, Esri, DeLorme, HERE, UNEP-WCMC, USGS, NASA, ESA, METI, NRCAN, GEBCO, NOAA, increment P Corp.



Path: P:\PROJECTS\MPO - Projects\Riverside Transmission Reliability Project_WLD.Dat\CPUC\20161201\CPUC_20161201.mxd



The Riverside Transmission Reliability Project (RTRP) 220 kV transmission route depicted here is based on planning level assumptions. The exact location of the route will be determined following California Public Utilities Commission (CPUC) approval of the Certificate of Public Convenience and Necessity (CPCN) for RTRP, completion of final engineering, identification and confirmation of field conditions, availability of labor, material, and equipment, and compliance with applicable environmental and permitting requirements.

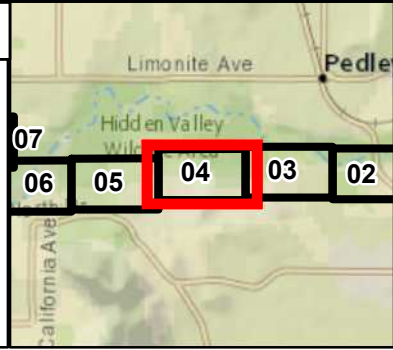
Riverside Transmission Reliability Project Hybrid Route

Proposed Transmission Structures

- Tubular Steel Pole (TSP)

Proposed Transmission Alignment

- Overhead Proposed Alignment

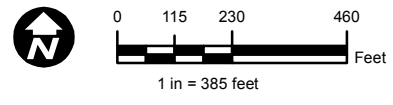


Date: 12/1/2016
 File Name: RTRP_CPUC_20161201.mxd
 Version #: 1

Features depicted herein are planning level accuracy, and intended for informational purposes only. Distances and locations may be distorted at this scale. Always consult with the proper legal documents or agencies regarding such features. Real Properties Department.

Thomas Bros. Maps is a registered trademark of Rand McNally & Company. Reproduced with permission granted by Rand McNally & Company. © Rand McNally & Company. All rights reserved.

Service Layer Credits: Content may not reflect National Geographic's current map policy. Sources: National Geographic, Esri, DeLorme, HERE, UNEP-WCMC, USGS, NASA, ESA, METI, NRCAN, GEBCO, NOAA, increment P Corp.



Path: P:\PROJECTS\MPO - Projects\Riverside Transmission Reliability Project_WLD Data\CPUCC20161201\CPUCC20161201.mxd



The Riverside Transmission Reliability Project (RTRP) 220 kV transmission route depicted here is based on planning level assumptions. The exact location of the route will be determined following California Public Utilities Commission (CPUC) approval of the Certificate of Public Convenience and Necessity (CPCN) for RTRP, completion of final engineering, identification and confirmation of field conditions, availability of labor, material, and equipment, and compliance with applicable environmental and permitting requirements.

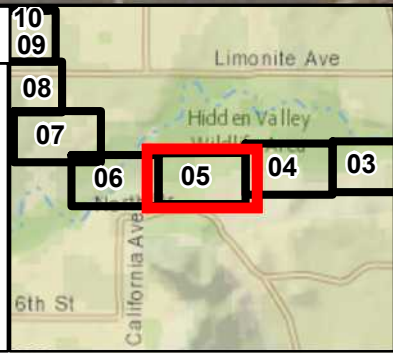
Riverside Transmission Reliability Project Hybrid Route

Proposed Transmission Structures

Tubular Steel Pole (TSP)

Proposed Transmission Alignment

Overhead Proposed Alignment

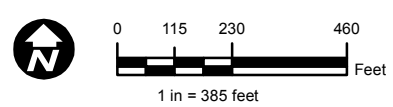


Date: 12/1/2016
File Name: RTRP_CPUC_20161201.mxd
Version #: 1

Features depicted herein are planning level accuracy, and intended for informational purposes only. Distances and locations may be distorted at this scale. Always consult with the proper legal documents or agencies regarding such features. Real Properties Department.

Thomas Bros. Maps is a registered trademark of Rand McNally & Company. Reproduced with permission granted by Rand McNally & Company. © Rand McNally & Company. All rights reserved.

Service Layer Credits: Content may not reflect National Geographic's current map policy. Sources: National Geographic, Esri, DeLorme, HERE, UNEP-WCMC, USGS, NASA, ESA, METI, NRCAN, GEBCO, NOAA, increment P Corp.



Path: P:\PROJECTS\MPO - Projects\Riverside Transmission Reliability Project - WLD Data\CPUCC\20161201\CPUCC_20161201.mxd



The Riverside Transmission Reliability Project (RTRP) 220 kV transmission route depicted here is based on planning level assumptions. The exact location of the route will be determined following California Public Utilities Commission (CPUC) approval of the Certificate of Public Convenience and Necessity (CPCN) for RTRP, completion of final engineering, identification and confirmation of field conditions, availability of labor, material, and equipment, and compliance with applicable environmental and permitting requirements.

Riverside Transmission Reliability Project Hybrid Route

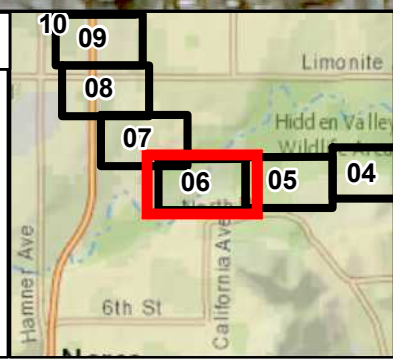
Proposed Transmission Structures

- Tubular Steel Pole (TSP)
- Lattice Steel Tower (LST)
- Riser pole (TSP)
- Vault

Proposed Telecom Vaults*

(Adjacent to Electrical Vaults per Telecom design)

- #### Proposed Transmission Alignment
- Overhead Proposed Alignment
 - Underground Proposed Alignment

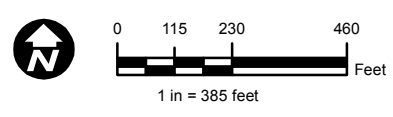


Date: 12/1/2016
 File Name: RTRP_CPUC_20161201.mxd
 Version #: 1

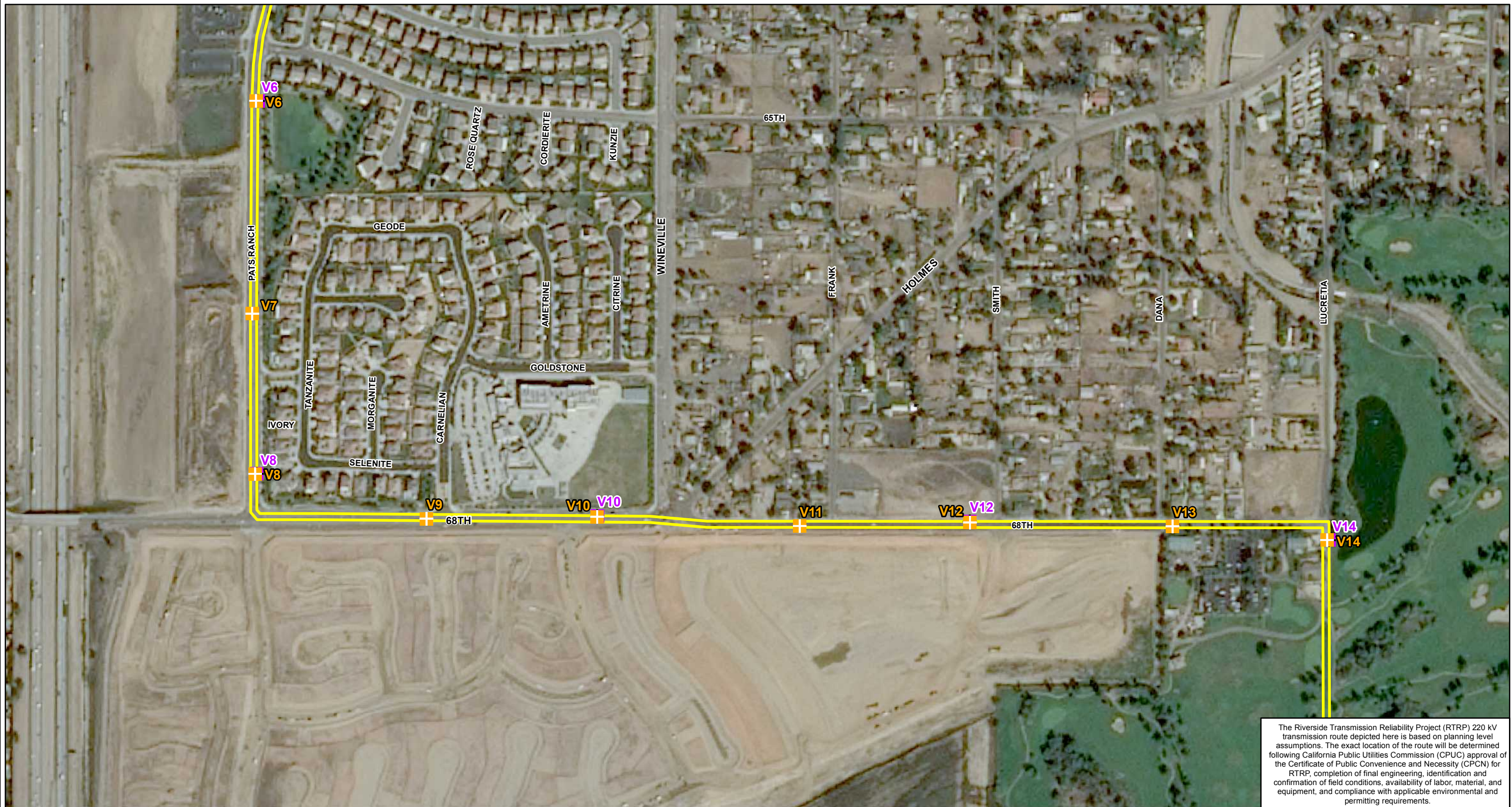
Features depicted herein are planning level accuracy, and intended for informational purposes only. Distances and locations may be distorted at this scale. Always consult with the proper legal documents or agencies regarding such features. Real Properties Department.

Thomas Bros. Maps is a registered trademark of Rand McNally & Company. Reproduced with permission granted by Rand McNally & Company. © Rand McNally & Company. All rights reserved.

Service Layer Credits: Content may not reflect National Geographic's current map policy. Sources: National Geographic, Esri, DeLorme, HERE, UNEP-WCMC, USGS, NASA, ESA, METI, NRCAN, GEBCO, NOAA, increment P Corp.



Path: P:\PROJECTS\MPO - Projects\Riverside\TransmissionReliabilityProject_WLD.Data\CPUCC20161201\CPUCC20161201.mxd



The Riverside Transmission Reliability Project (RTRP) 220 kV transmission route depicted here is based on planning level assumptions. The exact location of the route will be determined following California Public Utilities Commission (CPUC) approval of the Certificate of Public Convenience and Necessity (CPCN) for RTRP, completion of final engineering, identification and confirmation of field conditions, availability of labor, material, and equipment, and compliance with applicable environmental and permitting requirements.

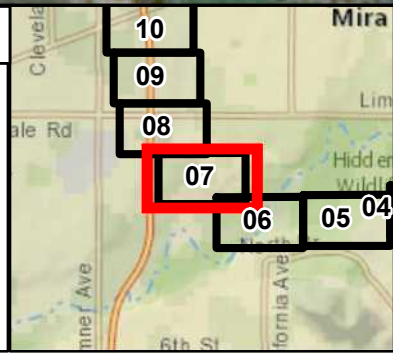
Riverside Transmission Reliability Project Hybrid Route

Proposed Transmission Structures

- Vault
- Proposed Telecom Vaults*
(Adjacent to Electrical Vaults per Telecom design)

Proposed Transmission Alignment

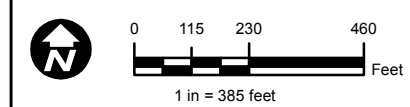
- Underground Proposed Alignment



Date: 12/1/2016
 File Name: RTRP_CPUC_20161201.mxd
 Version #: 1

Features depicted herein are planning level accuracy, and intended for informational purposes only. Distances and locations may be distorted at this scale. Always consult with the proper legal documents or agencies regarding such features. Real Properties Department.
 Thomas Bros. Maps is a registered trademark of Rand McNally & Company. Reproduced with permission granted by Rand McNally & Company. © Rand McNally & Company. All rights reserved.

Service Layer Credits: Content may not reflect National Geographic's current map policy. Sources: National Geographic, Esri, DeLorme, HERE, UNEP-WCMC, USGS, NASA, ESA, METI, NRCAN, GEBCO, NOAA, increment P Corp.



Path: P:\PROJECTS\MPO - Projects\Riverside Transmission Reliability Project - WLD Data\CPUCC20161201\CPUCC20161201.mxd



The Riverside Transmission Reliability Project (RTRP) 220 kV transmission route depicted here is based on planning level assumptions. The exact location of the route will be determined following California Public Utilities Commission (CPUC) approval of the Certificate of Public Convenience and Necessity (CPCN) for RTRP, completion of final engineering, identification and confirmation of field conditions, availability of labor, material, and equipment, and compliance with applicable environmental and permitting requirements.

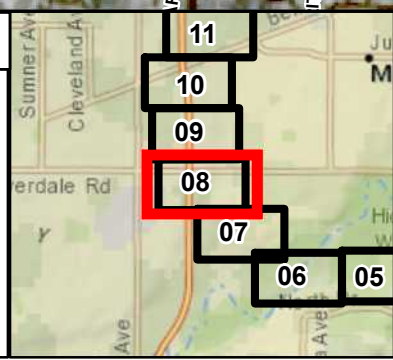
Riverside Transmission Reliability Project Hybrid Route

Proposed Transmission Structures

- Riser pole (TSP)
- Vault
- Proposed Telecom Vaults*
(Adjacent to Electrical Vaults per Telecom design)

Proposed Transmission Alignment

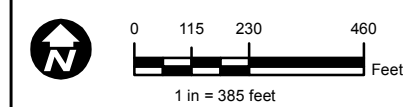
- Overhead Proposed Alignment
- Underground Proposed Alignment



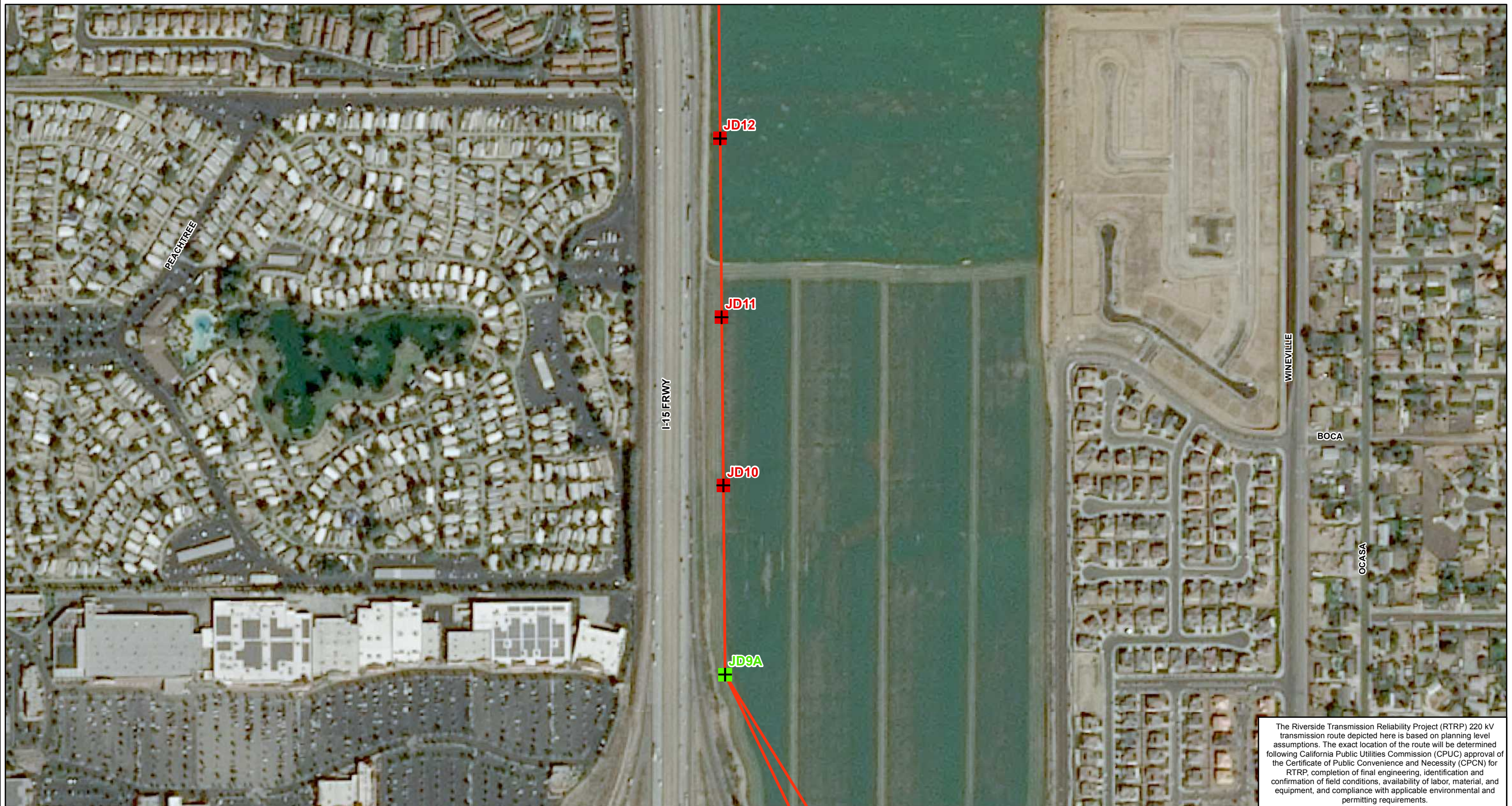
Date: 12/1/2016
 File Name: RTRP_CPUC_20161201.mxd
 Version #: 1

Features depicted herein are planning level accuracy, and intended for informational purposes only. Distances and locations may be distorted at this scale. Always consult with the proper legal documents or agencies regarding such features. Real Properties Department.
 Thomas Bros. Maps is a registered trademark of Rand McNally & Company. Reproduced with permission granted by Rand McNally & Company. © Rand McNally & Company. All rights reserved.

Service Layer Credits: Content may not reflect National Geographic's current map policy. Sources: National Geographic, Esri, DeLorme, HERE, UNEP-WCMC, USGS, NASA, ESA, METI, NRCAN, GEBCO, NOAA, increment P Corp.



Path: P:\PROJECTS\MPO - Projects\Riverside Transmission Reliability Project_WLD.Dat\CPUCC20161201\CPUCC20161201.mxd



The Riverside Transmission Reliability Project (RTRP) 220 kV transmission route depicted here is based on planning level assumptions. The exact location of the route will be determined following California Public Utilities Commission (CPUC) approval of the Certificate of Public Convenience and Necessity (CPCN) for RTRP, completion of final engineering, identification and confirmation of field conditions, availability of labor, material, and equipment, and compliance with applicable environmental and permitting requirements.

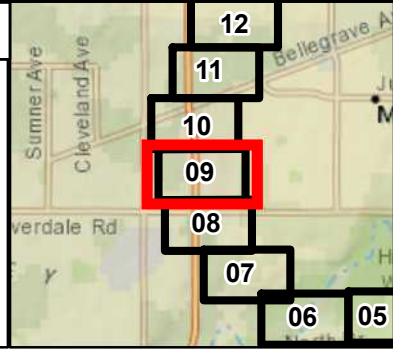
Riverside Transmission Reliability Project Hybrid Route

Proposed Transmission Structures

- + Tubular Steel Pole (TSP)
- + Lattice Steel Tower (LST)

Proposed Transmission Alignment

- Overhead Proposed Alignment

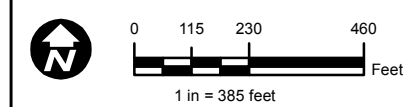


Date: 12/1/2016
 File Name: RTRP_CPUC_20161201.mxd
 Version #: 1

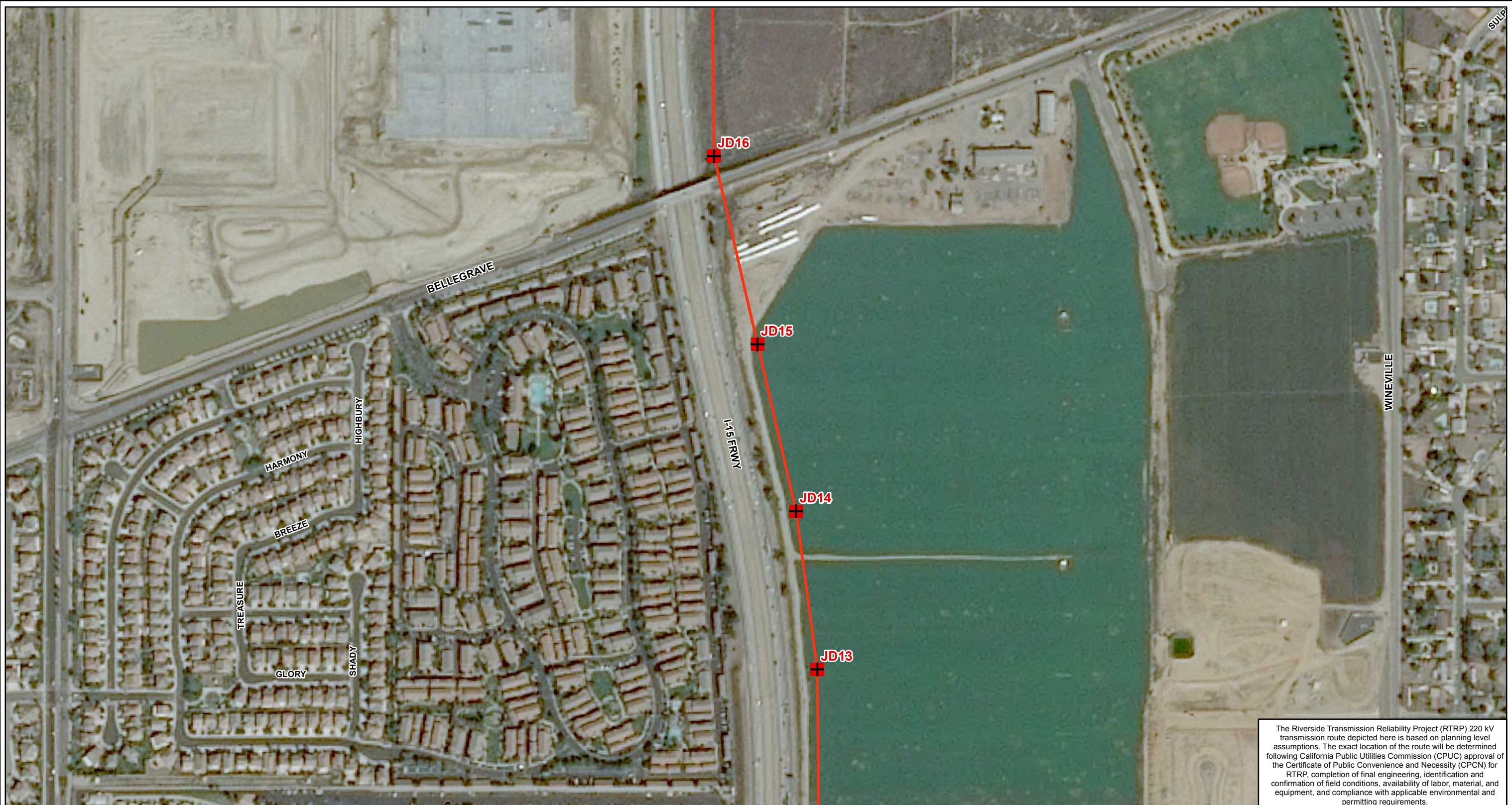
Features depicted herein are planning level accuracy, and intended for informational purposes only. Distances and locations may be distorted at this scale. Always consult with the proper legal documents or agencies regarding such features. Real Properties Department.

Thomas Bros. Maps is a registered trademark of Rand McNally & Company. Reproduced with permission granted by Rand McNally & Company. © Rand McNally & Company. All rights reserved.

Service Layer Credits: Content may not reflect National Geographic's current map policy. Sources: National Geographic, Esri, DeLorme, HERE, UNEP-WCMC, USGS, NASA, ESA, METI, NRCAN, GEBCO, NOAA, increment P Corp.



Path: P:\PROJECTS\MPO - Projects\Riverside Transmission Reliability Project_WLD.Data\CPUCC20161201\CPUCC20161201.mxd



The Riverside Transmission Reliability Project (RTRP) 220 kV transmission route depicted here is based on planning level assumptions. The exact location of the route will be determined following California Public Utilities Commission (CPUC) approval of the Certificate of Public Convenience and Necessity (CPCN) for RTRP, completion of final engineering, identification and confirmation of field conditions, availability of labor, material, and equipment, and compliance with applicable environmental and permitting requirements.

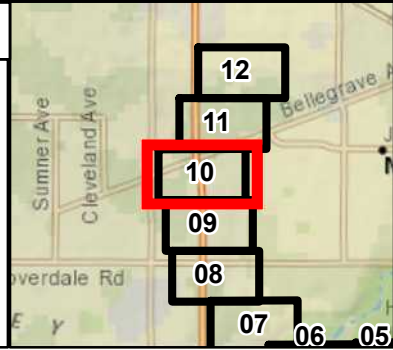
Riverside Transmission Reliability Project Hybrid Route

Proposed Transmission Structures

Tubular Steel Pole (TSP)

Proposed Transmission Alignment

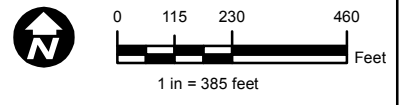
Overhead Proposed Alignment



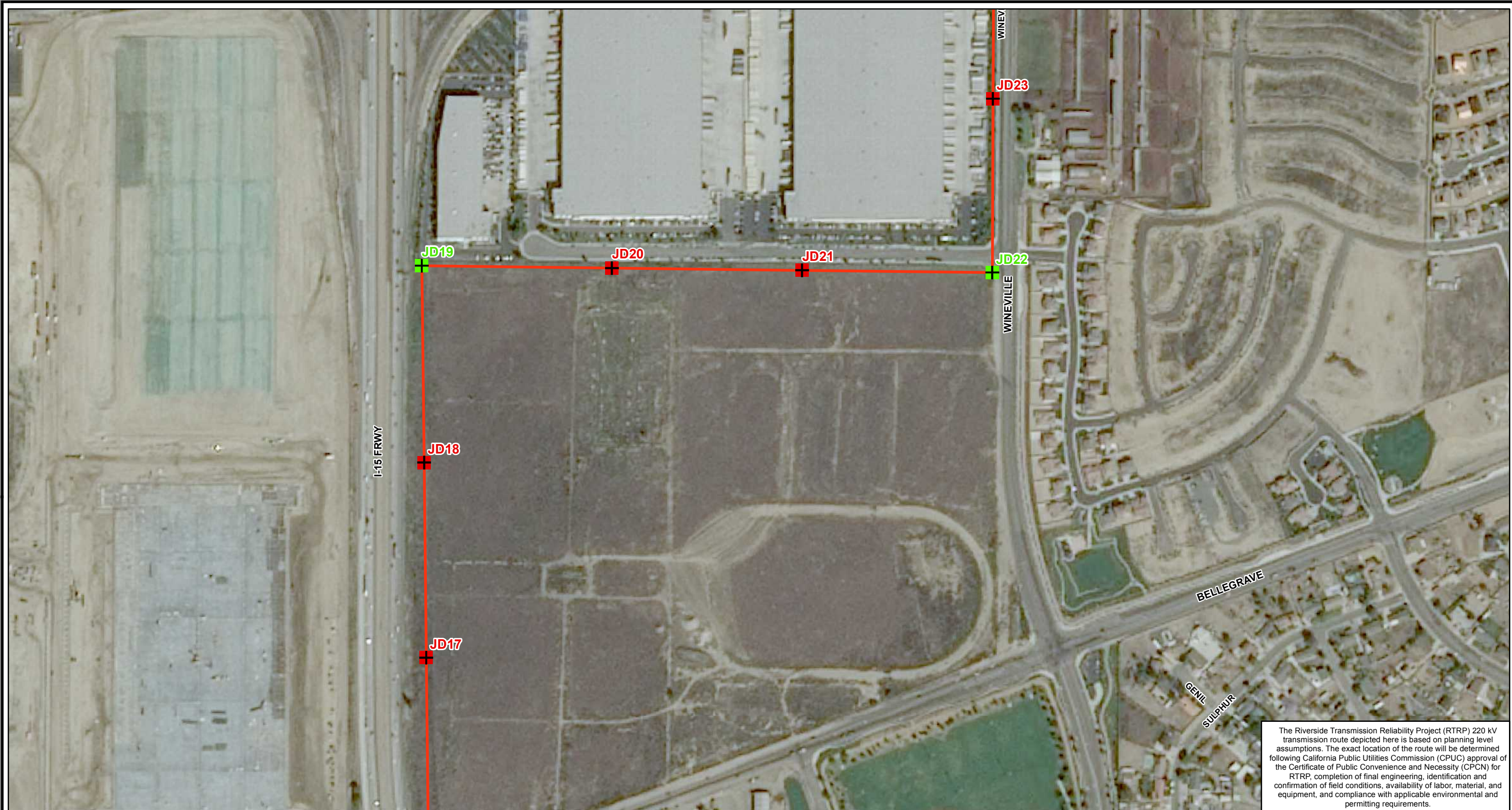
Date: 12/1/2016
File Name: RTRP_CPUC_20161201.mxd
Version #: 1

Features depicted herein are planning level accuracy, and intended for informational purposes only. Distances and locations may be distorted at this scale. Always consult with the proper legal documents or agencies regarding such features. Real Properties Department.
Thomas Bros. Maps is a registered trademark of Rand McNally & Company. Reproduced with permission granted by Rand McNally & Company. © Rand McNally & Company. All rights reserved.

Service Layer Credits: Content may not reflect National Geographic's current map policy. Sources: National Geographic, Esri, DeLorme, HERE, UNEP-WCMC, USGS, NASA, ESA, METI, NRCAN, GEBCO, NOAA, increment P Corp.





Path: P:\PROJECTS\MPO - Projects\Riverside Transmission Reliability Project_WLD.DWG\CPUCC20161201\CPUCC_20161201.mxd




The Riverside Transmission Reliability Project (RTRP) 220 kV transmission route depicted here is based on planning level assumptions. The exact location of the route will be determined following California Public Utilities Commission (CPUC) approval of the Certificate of Public Convenience and Necessity (CPCN) for RTRP, completion of final engineering, identification and confirmation of field conditions, availability of labor, material, and equipment, and compliance with applicable environmental and permitting requirements.

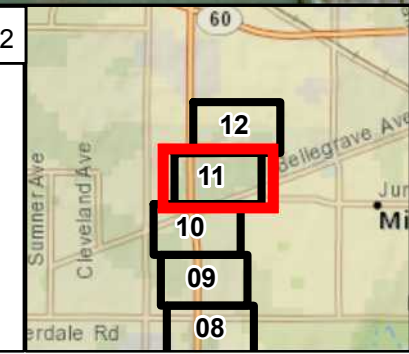
Riverside Transmission Reliability Project Hybrid Route

Proposed Transmission Structures

-  Tubular Steel Pole (TSP)
-  Lattice Steel Tower (LST)

Proposed Transmission Alignment

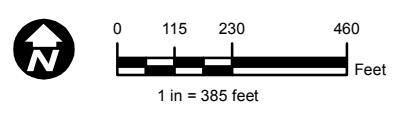
-  Overhead Proposed Alignment



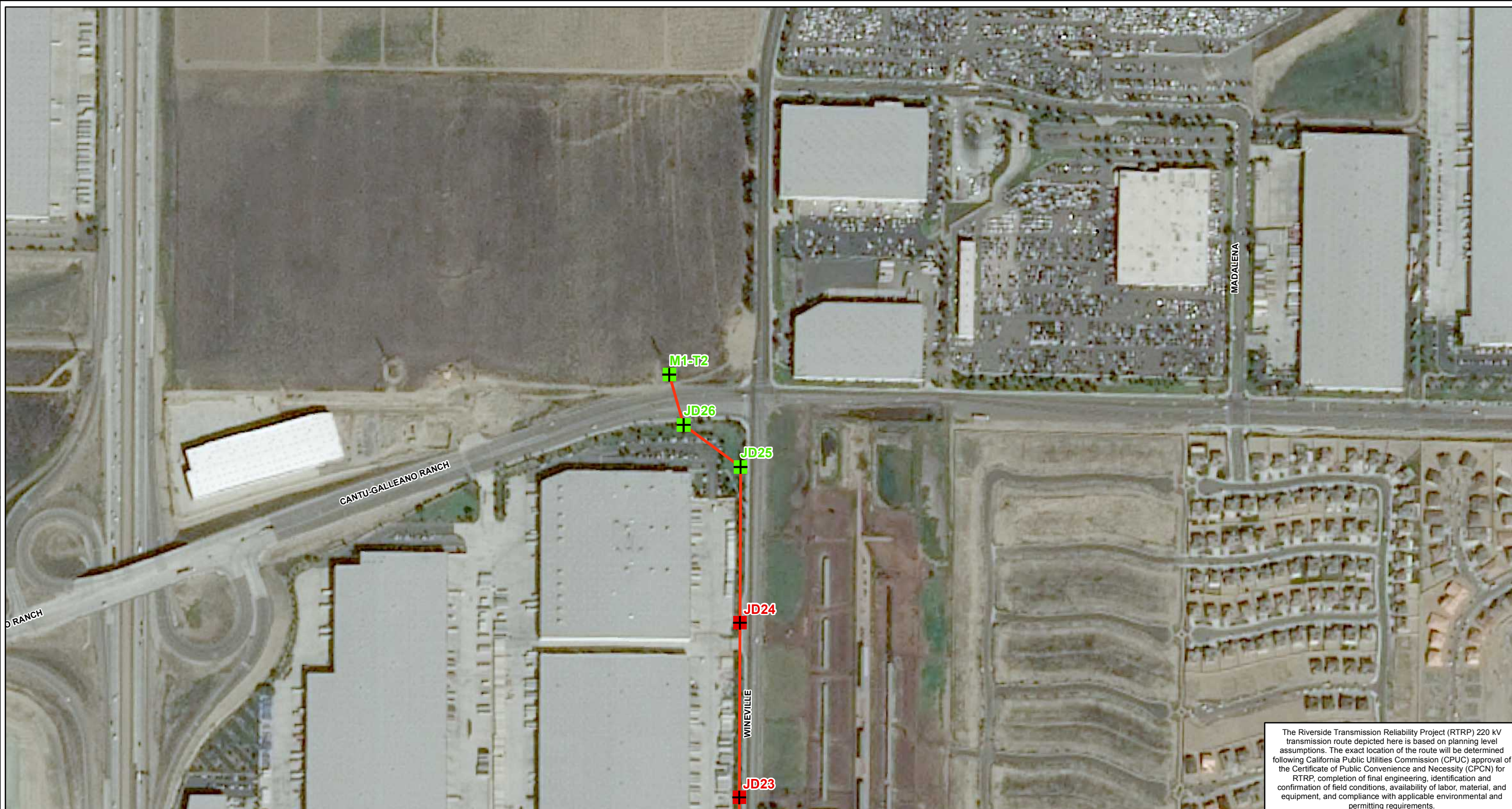
Date: 12/1/2016
 File Name: RTRP_CPUC_20161201.mxd
 Version #: 1

Features depicted herein are planning level accuracy, and intended for informational purposes only. Distances and locations may be distorted at this scale. Always consult with the proper legal documents or agencies regarding such features. Real Properties Department.
 Thomas Bros. Maps is a registered trademark of Rand McNally & Company. Reproduced with permission granted by Rand McNally & Company. © Rand McNally & Company. All rights reserved.

Service Layer Credits: Content may not reflect National Geographic's current map policy. Sources: National Geographic, Esri, DeLorme, HERE, UNEP-WCMC, USGS, NASA, ESA, METI, NRCAN, GEBCO, NOAA, increment P Corp.



Path: P:\PROJECTS\MPO - Projects\Riverside Transmission Reliability Project - WLD Data\CPUCC20161201 - CPUCC20161201.mxd



The Riverside Transmission Reliability Project (RTRP) 220 kV transmission route depicted here is based on planning level assumptions. The exact location of the route will be determined following California Public Utilities Commission (CPUC) approval of the Certificate of Public Convenience and Necessity (CPCN) for RTRP, completion of final engineering, identification and confirmation of field conditions, availability of labor, material, and equipment, and compliance with applicable environmental and permitting requirements.

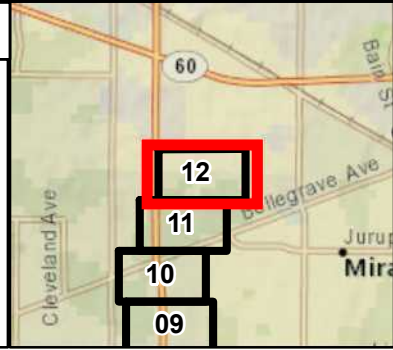
Riverside Transmission Reliability Project Hybrid Route

Proposed Transmission Structures

- Tubular Steel Pole (TSP)
- Lattice Steel Tower (LST)

Proposed Transmission Alignment

- Overhead Proposed Alignment



Date: 12/1/2016
 File Name: RTRP_CPUC_20161201.mxd
 Version #: 1

Features depicted herein are planning level accuracy, and intended for informational purposes only. Distances and locations may be distorted at this scale. Always consult with the proper legal documents or agencies regarding such features. Real Properties Department.
 Thomas Bros. Maps is a registered trademark of Rand McNally & Company. Reproduced with permission granted by Rand McNally & Company. © Rand McNally & Company. All rights reserved.

Service Layer Credits: Content may not reflect National Geographic's current map policy. Sources: National Geographic, Esri, DeLorme, HERE, UNEP-WCMC, USGS, NASA, ESA, METI, NRCAN, GEBCO, NOAA, increment P Corp.

