

Solar Energy

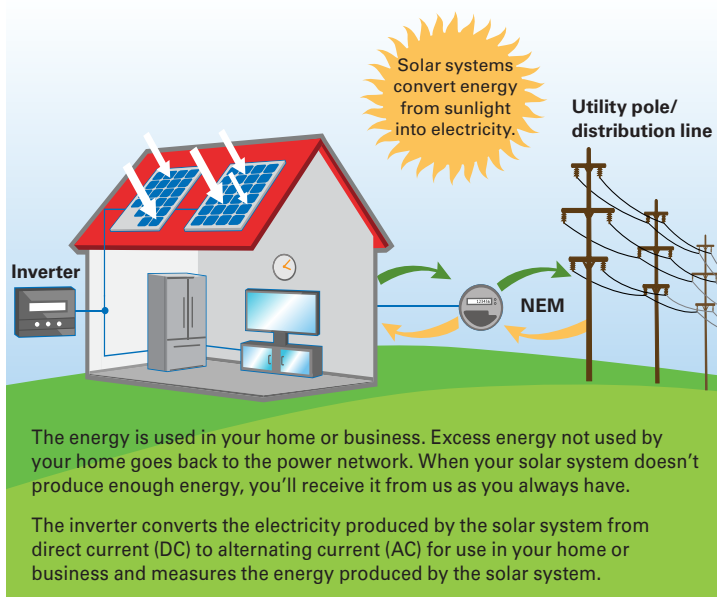
Applying for Interconnection and Net Energy Metering



Going solar? Then you'll want to connect with us.

Once you have met with your contractor and selected the appropriate solar energy system for your home or business, the next step is to request interconnection to our electrical power network and to enroll in Net Energy Metering (NEM).

Having your system interconnected helps ensure you have access to power during those periods when your system is not producing enough electricity for your property (in the evening, for example). Plus, whenever your system generates more energy than your household can use, you'll receive credit for the excess energy generated and sent back to our electrical power network.



NEM is a special rate option that provides you full retail value for the electricity that is generated and credits you for the surplus energy you generate.

How Net Energy Metering Works

The NEM program uses a bi-directional meter to track the "net" difference in kilowatt hours (kWh) between the amount of electricity you produce and the amount of electricity you consume on a time-of-use basis during each billing period. Each month, you will be either a net consumer or a net generator of electricity.

For instance, if during the month your household consumed 500 kWh of energy from the power network, and supplied 200 kWh, you would be a net consumer and would be charged for 300 kWh (i.e., 500 kWh minus 200kWh).

Conversely, if in a given month you supplied more electricity to the power network than your household consumed, you are considered a net generator for the month and will be credited for the amount of electricity (kWh) supplied to our power network less the amount supplied by us.

For example, if your household consumed 500 kWh but supplied 700 kWh to the power network, you would be credited with 200 kWh. Credits appear as a negative number on your bill (e.g. -200kWh).

Net Consumer	Net Generator
500 kWh Consumed	700 kWh Supplied
- 200 kWh Supplied	- 500 kWh Consumed
300 kWh Charged	- 200 kWh Credit

Solar Energy

Applying for Interconnection and Net Energy Metering

Getting Connected and Enrolling in NEM

To apply to have your system connected to our power network and enroll in NEM, your contractor will need to complete and submit the Interconnection Request (IR) at sce.com/NEM.¹

When you apply for Interconnection and NEM

We will ensure that:

- Your system is safe to operate and will not impact power network operation.²
- Our field personnel are aware your property contains a self-generating power system that is exporting electricity to our power network.

Time Frame for Connecting to Our Power Network

The time between when your contractor submits your completed application to us and when you receive permission to operate your solar generating system takes an average of two to three business days for standard projects.³ More complex projects require a longer time frame to complete the interconnection process.

What Should You Keep in Mind?

The current NEM 1.0 program is projected to close June 30, 2017 (based on a state-mandated limit). If your interconnection approval occurs after June 30, 2017, the successor NEM 2.0 program will be in effect and the following will be needed:

- Selection of a Time-of-Use (TOU) rate option or default to Schedule TOU-D-A. For TOU rate options, visit on.sce.com/tousaverates.
- Selection to have any applicable energy charges billed monthly or annually.

For more information or questions about Interconnection or Net Energy Metering, please visit sce.com/NEM or call us at 1-800-655-4555.

NEM 1.0 vs. NEM 2.0 Program Differences

	NEM 1.0	NEM 2.0
Retail Rate Credit For Export	YES	YES
Tariff Program Grandfathering Period	20 Years	20 Years
Nonbypassable Charges (NBCs)	Based on the "netted out" quantity of energy consumed from the grid	Based on the "netted out" quantity of energy consumed in each metered interval*
1 MW-AC System Cap	YES,** but the system must be sized to the customer's onsite load	NO, but the system must be sized to the customer's onsite load
Interconnection Fee	WAIVED	YES \$75 for systems 1 MW-AC or less \$800 for systems > 1 MW
Mandatory TOU Rates	NO	YES, certain exceptions apply***

Note:

* Calculation of NBCs for MASH-VNM, NEM-V and NEM-Agg are based on each kWh consumed from the grid or Channel 1 (imports only) instead of the net.

** Schedule NEM includes provisions for the California Department of Corrections and Rehabilitation (CDCR) and Armed Forces (including United States Army, Navy, Air Force, Marine Corps or Coast Guard) that allow these entities to exceed the 1 MW system cap.

*** The exception only applies to residential customers who do not have a TOU rate available to them (e.g., master-metered customers served on a DM/DMS rates).

¹ Standard IR for residential systems 30 kW or less can be submitted after the City/County final permit inspection or at least 30 days prior to the permit inspection. Non-standard IRs should start the application process at least 30 days prior to city/county inspection.

² Your solar system installer needs to comply with California's Electric Rule 21, SCE Electric Service Requirements for your electrical service panel, National Electrical Code®, and any applicable local codes and regulations.

³ An application is deemed valid and complete when the following are submitted: signed interconnection agreement, completed application, single line diagram, and final inspection from Authority Having Jurisdiction (AHJ).