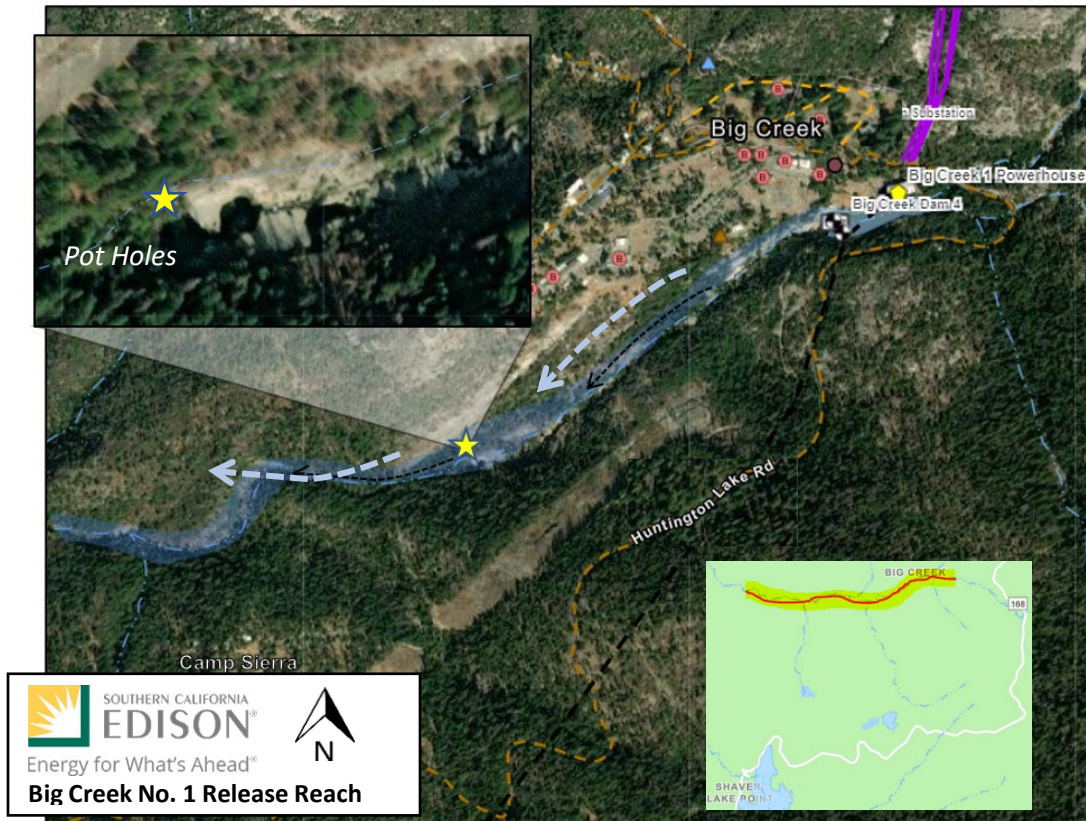


PUBLIC NOTICE

NOTICE OF HIGH WATER FLOWS



SCE will be increasing flows weekdays in the Big Creek reach, downstream of Dam 4 near Big Creek Powerhouse No. 1, to meet energy needs:

September 1st – September 30th, 2021
Monday - Friday between 4:00-9:00pm

Safety is at the core of SCE and we want you and your family to enjoy recreating and stay safe. **Please follow the following safety tips:**

- **Follow all signage**
- **Always wear your personal flotation device (commonly known as a life jacket)**
- **Be aware of your surroundings – know where higher ground is located**
- **Watch for an unusual and sudden rise in creek/river flows**
- **Flows may suddenly change without warning (outside of listed dates and times) due to unforeseen circumstances**
- **Always supervise children and any persons with mobility challenges while near, around, and in the water**
- **If you receive notice of impending flows, move quickly and safely to high ground and away from the water; Stay on high ground until flows have receded**
- **Do not walk through moving water, if possible. Six inches of moving water can make you fall**
- **Avoid extreme weather**