



---

# OUR COMMITMENT TO KEEPING COMMUNITIES SAFE

*KERN COUNTY  
TULARE COUNTY*

THE MEETING WILL BEGIN  
PROMPTLY AT  
6:00 P.M.



# WELCOME: HOUSEKEEPING

- Thank you for joining us this evening
- This meeting is being recorded
- Please note the Q&A feature is available for your comments and questions.
- To add closed captioning, please click the three dots found at the top right of the tool bar. In the dropdown menu, select turn on live captions
- If you have questions or technical issues, please email us at **SCE Wildfire Safety Outreach:** [wildfireoutreach@sce.com](mailto:wildfireoutreach@sce.com)
- To submit a question, click the Q&A icon in ribbon and select "ask a question"



# AGENDA

PROGRAM	TIME	TOPIC	PRESENTER
6:00 p.m.	5 min	Welcome   Safety   Introductions	<b>Karla Sayles</b> Vice President, Local Public Affairs
6:05 p.m.	10 min	Weather & Fire Science	<b>Tom Rolinski</b> Fire Science Expert, Meteorology
6:15 p.m.	15 min	Wildfire Safety PSPS Operations Update  Grid Hardening Kern/Tulare areas	<b>Shinjini Menon</b> Senior Vice President, System Planning & Engineering
6:30 p.m.	10 min	Customer Programs and Resiliency	<b>Traeger Cotten</b> Senior Project Manager, Account Management & Solutions
6:40 p.m.	45 min	Q&A	<b>Christy Fanous</b> Vice President, Customer Experience & Performance
7:25 p.m.	5 min	Closing Remarks	<b>Christy Fanous</b> Vice President, Customer Experience & Performance

# SAFETY NEAR DOWNED WIRES



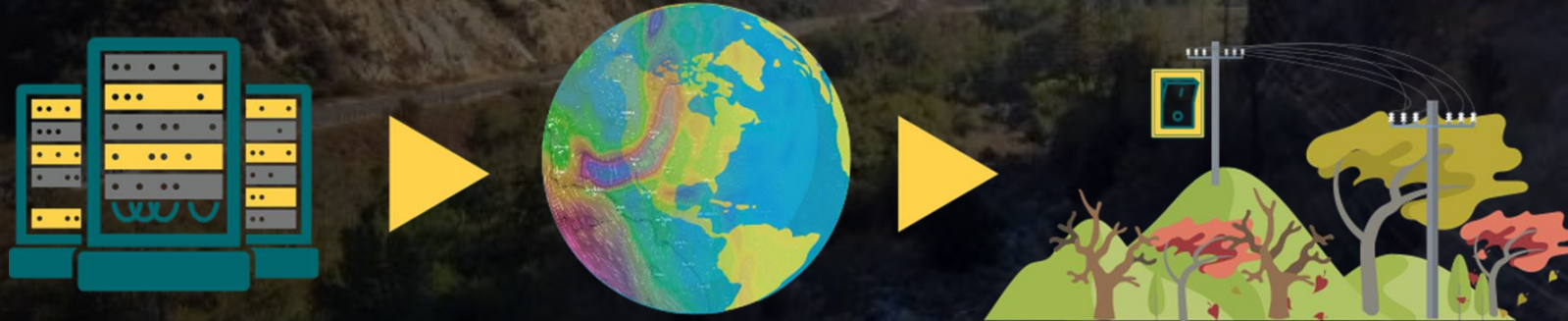
- **Stay away and call 911**
- Stay clear of anything contacting downed power wires
- Be cautious when using water to fight nearby fires
- Stay clear of vehicles near downed power wires
- If escape is necessary, do so carefully

*Damage observed while conducting power restoration patrols on circuits de-energized during the January 2025 PSPS events.*

# **WEATHER & FIRE SCIENCE**

Tom Rolinski

# METEOROLOGY AND FIRE SCIENCE FORECAST PROCESS



SCE's meteorology and fire sciences teams work together to identify areas of the SCE service area where PSPS actions may be necessary

We look for areas where **winds and fuel conditions align** in time and space to create elevated fire weather conditions



# NWS VS. SCE FORECAST GUIDANCE

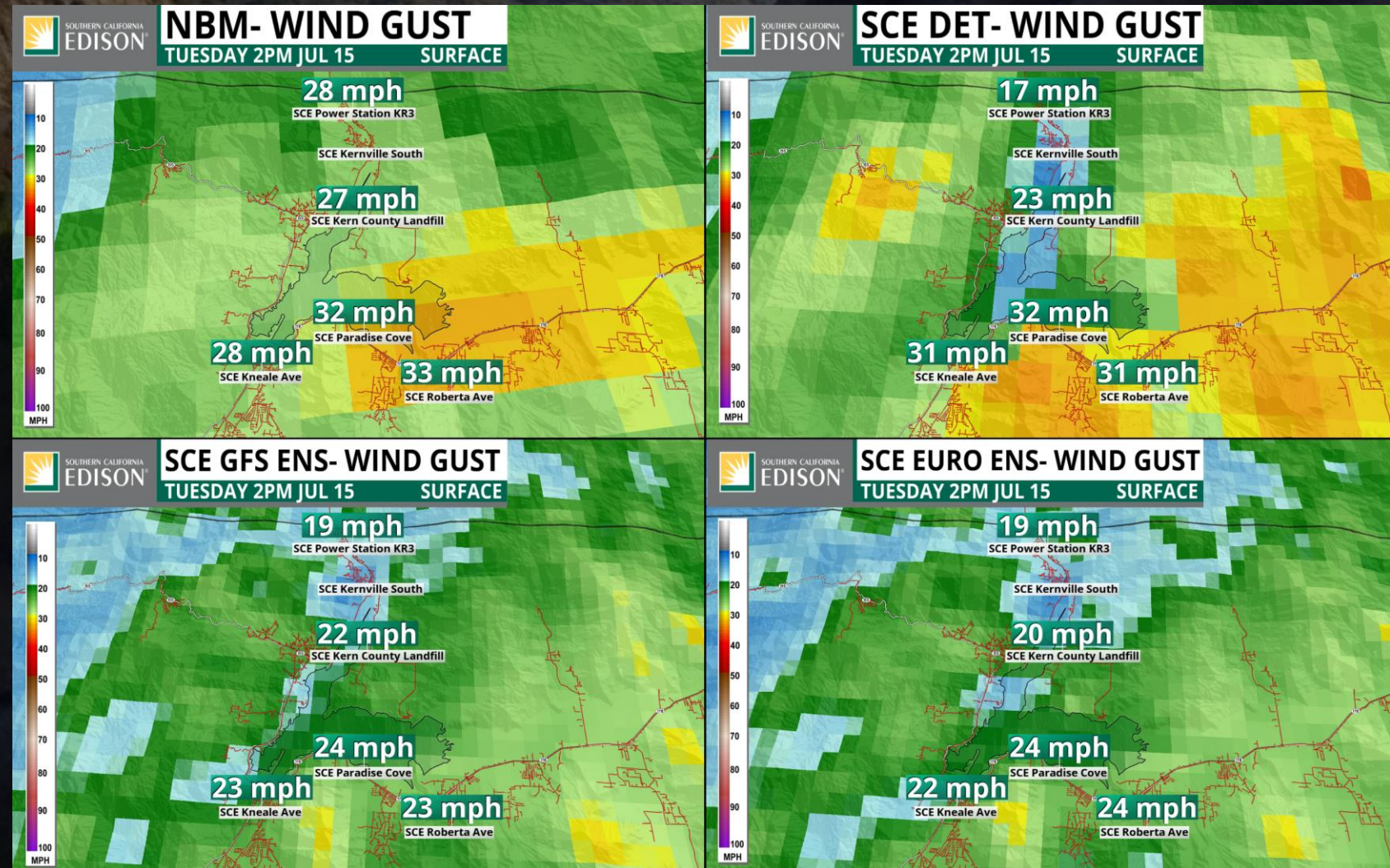
SCE runs 18 weather models in house, 10 of which are 1 km resolution (bottom two images).

NWS resolution is 2.5 km (top left image) or 3 km.

What does that mean?

More **accurate** representation of the complex terrain and how it influences the local wind pattern.

SCE uses AI (machine learning) to bias correct model data, leading to a **40% improvement** in accuracy.

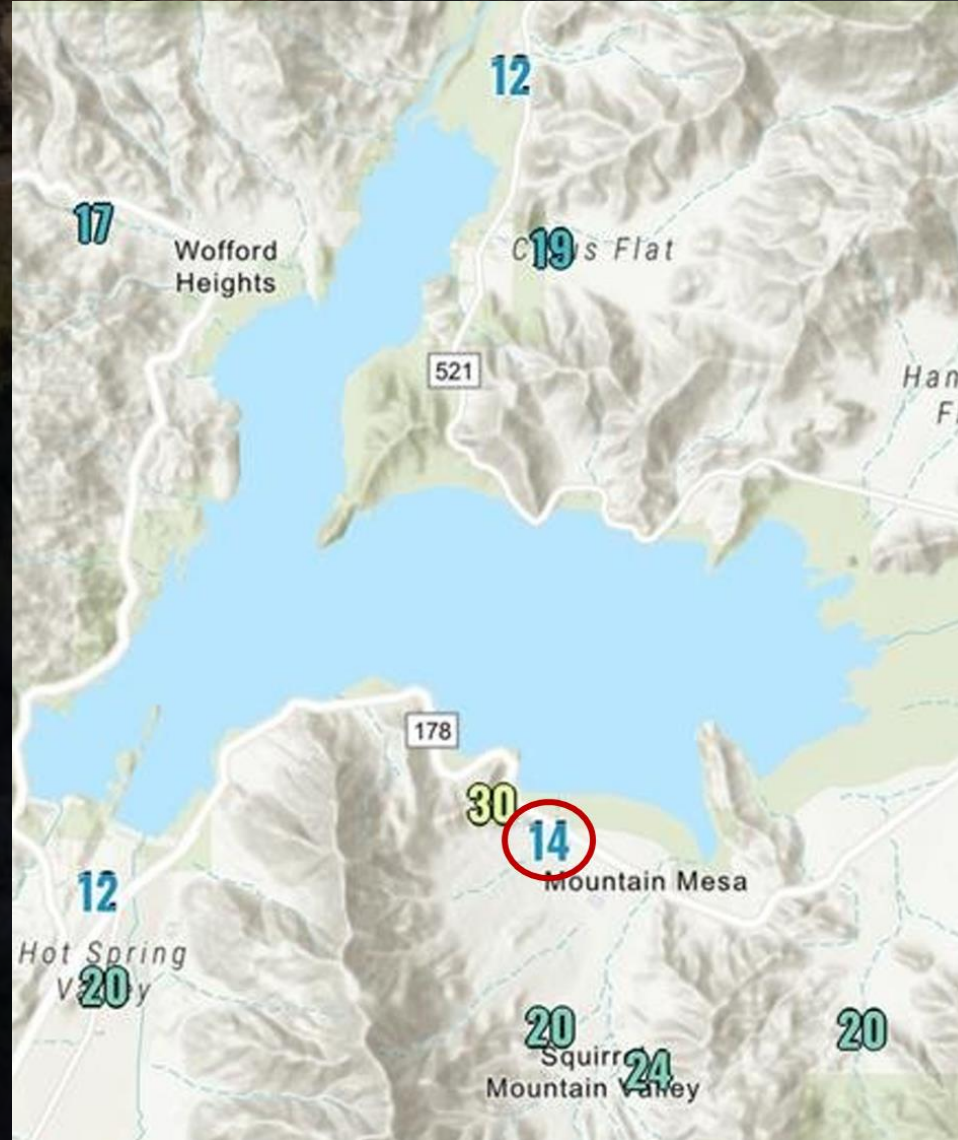


# STRATEGIC WEATHER STATION INSTALLATION

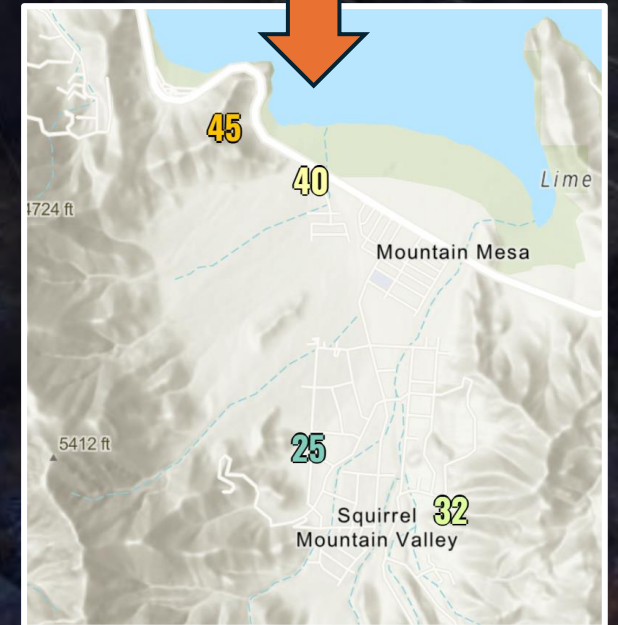
SCE has ~1870 weather stations, one of the largest private weather station networks in the country.

We are always looking for strategic weather station installation locations to mitigate PSPS.

One such location was installed June 19, 2025, just **half a mile** away from another weather station to best inform weather data near Kern Valley Hospital (pictured).



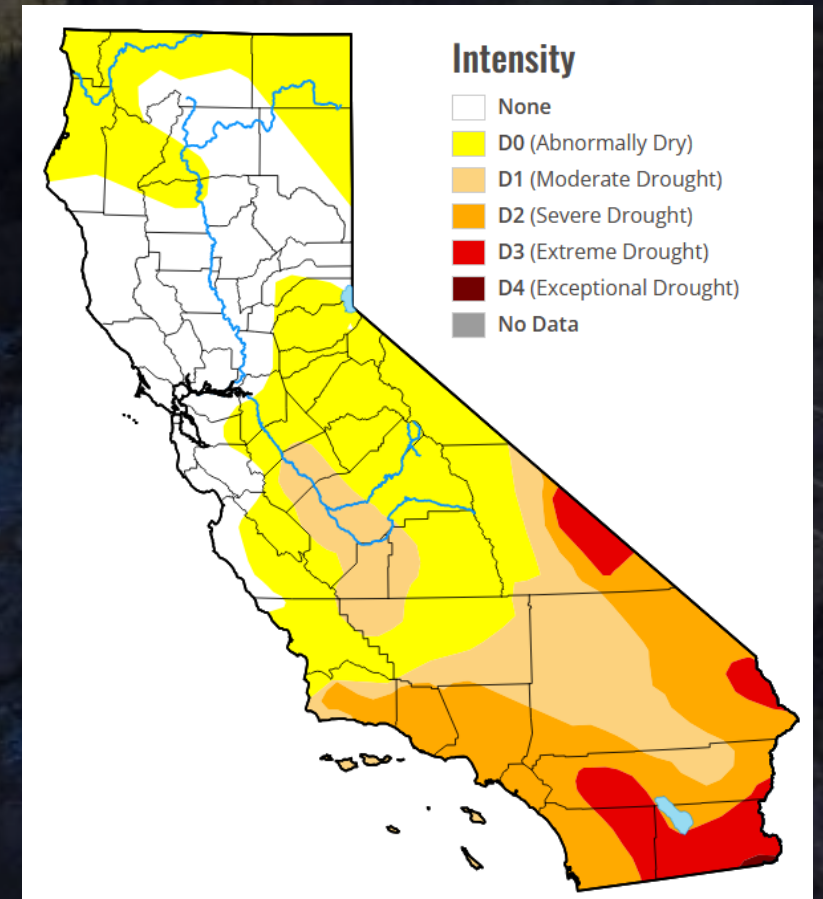
Observed wind gusts from July 9, 2025. Here the weather station verified stronger winds in both locations.



# 2025 WEATHER AND WILDFIRE FORECAST

## Weather, Fuels, & Fire Potential Highlights

- No widespread significant precipitation is anticipated across Kern or Tulare counties until late in the fall
- Temperatures are expected to be higher than normal this summer
- Drought conditions are expected to worsen and expand across more of the region including Kern and Tulare counties during the next several months
- All vegetation types have dried out and will support larger fire activity
- Fire activity will continue to increase across the local area during the rest of July and into August
- PSPS will continue to occur during elevated windy periods



# **PSPS OPERATIONS UPDATE & GRID HARDENING**

Shinjini Menon

# EXECUTING PSPS EFFECTIVELY:

## THRESHOLDS FOR ACTIVATION AND DE-ENERGIZATION

### FIRE POTENTIAL INDEX (FPI)

Formula estimates the potential of fire ignition and spread



### THRESHOLDS FOR DISTRIBUTION CIRCUITS

**Currently set in the elevated range in most areas contingent on fire suppression resources availability**

### WINDSPEED THRESHOLD FOR ACTIVATION

Wind speeds at which our system is vulnerable to flying debris or that pose a risk to our infrastructure



**Bare wire circuits:** National Weather Service's Wind Advisory of sustained windspeeds of 31 mph or gusts of 46 mph.

**Fully covered conductor circuits:** National Weather Service's High Wind Warning of sustained windspeeds of 40 mph or gusts of 58 mph.

Wind speeds determined separately for each circuit based on specific event risks. If actual conditions suggest more risk, or in large-scale events when many circuits are under consideration for shutoffs, the de-energization thresholds will be lowered (discounted), meaning power on a circuit will be turned off at lower wind speeds.

Decision-making fact sheet available at [sce.com/psps](https://sce.com/psps)

# UPDATES TO PSPS PROGRAM

## FPI AND WINDSPEED CRITERIA REFINEMENTS

- Updated application of FPI when broader fire weather concerns identified
- When new FPI criteria is applied, suggests 20-40% more PSPS activation days and event size is up to twice as large in 2025 assuming similar weather to 2024
- Refined application of windspeed discount factors

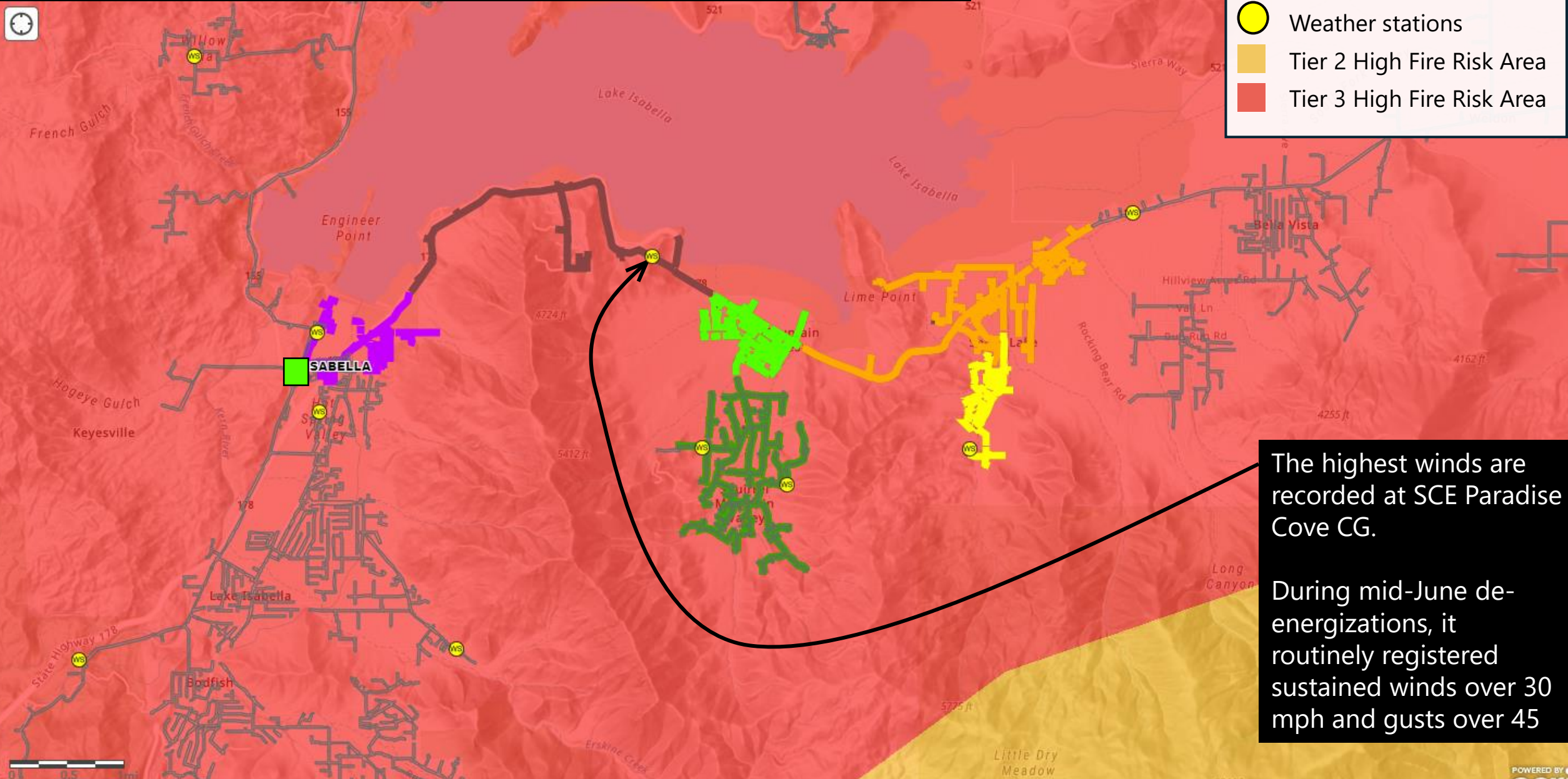
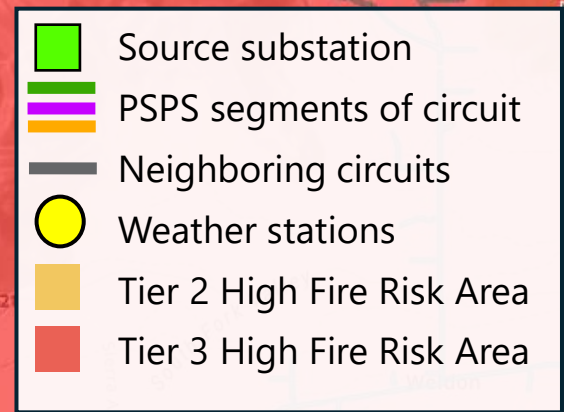
## NEW HFRA CIRCUITS AND EXPANDED BOUNDARIES

- 32 new circuits and ~47,000 more customer accounts now in HFRA and in scope for PSPS
- Expanded precautionary boundaries around HFRA; up to ~123,000 more customer accounts could be in scope for PSPS
- Includes areas and customers that have not experienced PSPS in the past

## 24/7 MONITORING AND ALERT SYSTEM

- Capturing unexpected weather (outside of current PSPS activation) meeting PSPS de-energization thresholds
- Circuits could be de-energized immediately at any time, day or night
- IMT activation and notifications would follow

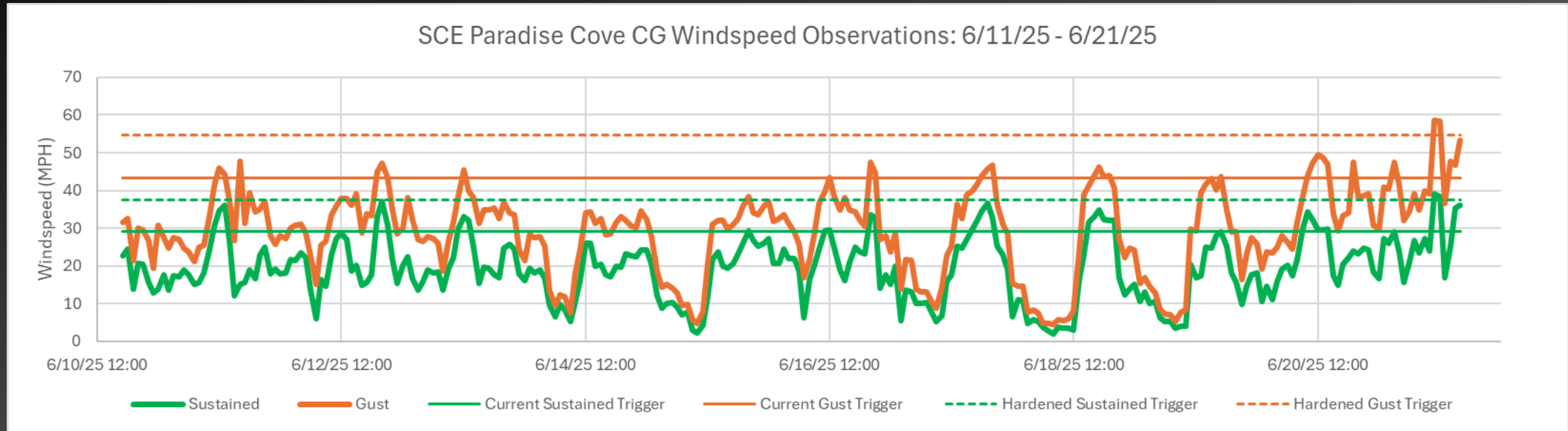
# MTN MESA & SOUTH LAKE, KERN COUNTY: TUNGSTEN CIRCUIT



The highest winds are recorded at SCE Paradise Cove CG.

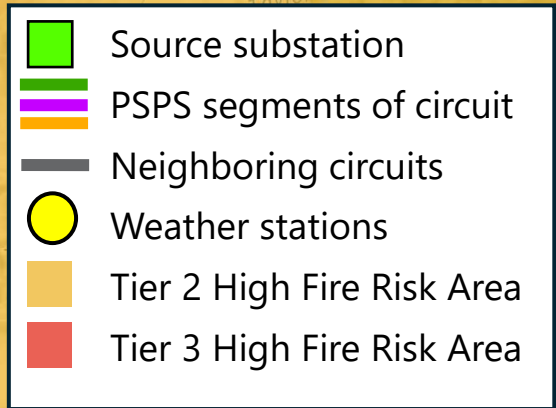
During mid-June de-energizations, it routinely registered sustained winds over 30 mph and gusts over 45

# TUNGSTEN CIRCUIT WIND PROFILE AND HARDENING STATUS



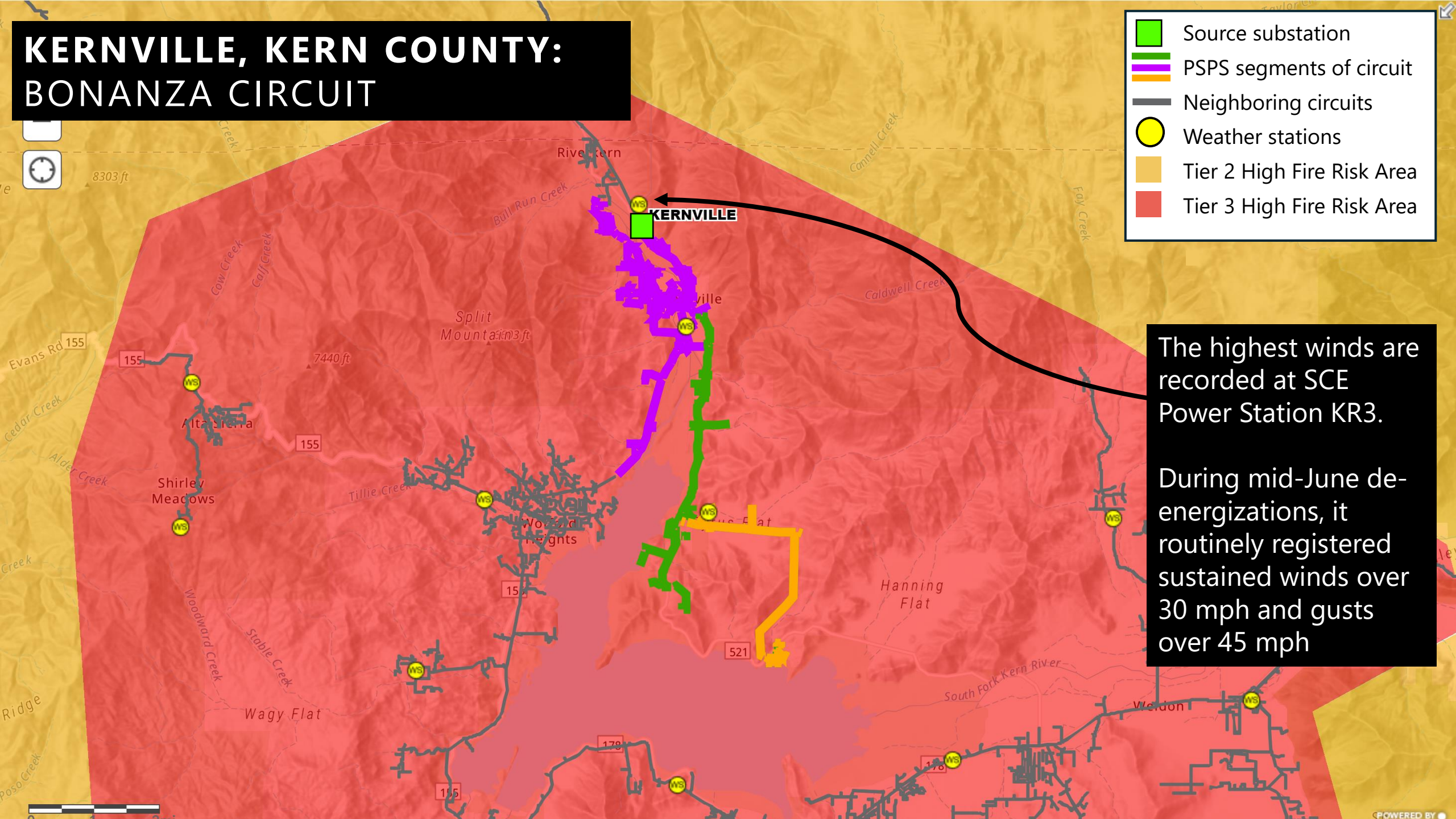
- Once circuit is hardened and windspeed thresholds are raised, PSPS will be greatly reduced, similar to circuits in Tehachapi
- SCE has already installed 4 miles of covered conductor on this circuit in 2025, with plans to install around 20 more miles before the end of the year. Some additional undergrounding is planned for execution in 2026, which will complete hardening on the circuit
- SCE installed a new weather station and switch in the Mountain Mesa area, allowing us more operational flexibility during PSPS, reducing the likelihood of de-energization in Mountain Mesa, Squirrel Mountain Valley, and South Lake

# KERNVILLE, KERN COUNTY: BONANZA CIRCUIT

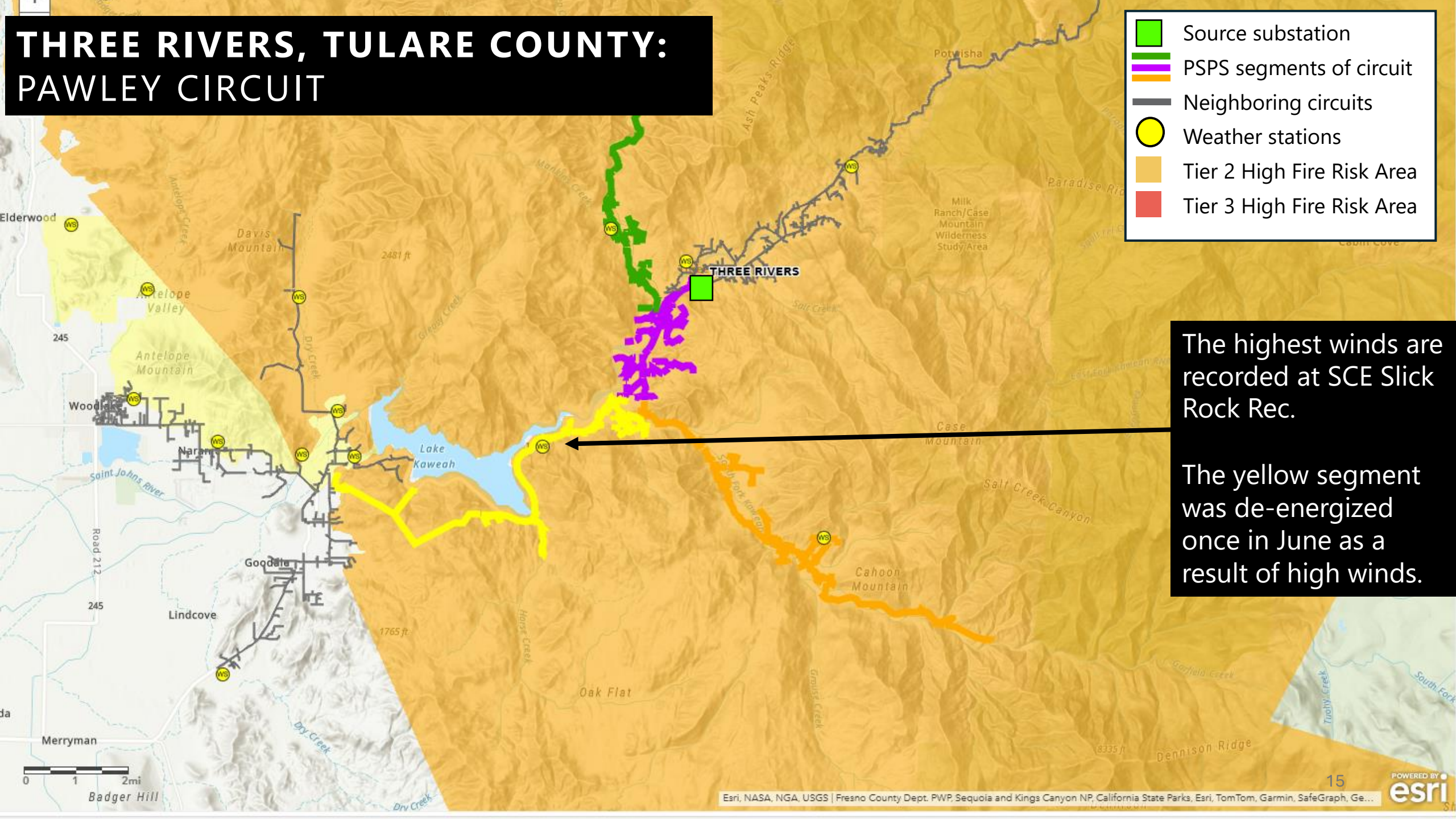


The highest winds are recorded at SCE Power Station KR3.

During mid-June de-energizations, it routinely registered sustained winds over 30 mph and gusts over 45 mph



# THREE RIVERS, TULARE COUNTY: PAWLEY CIRCUIT



# HARDENING ELECTRIC GRID & INFRASTRUCTURE



## COVERED CONDUCTOR

Replacing bare wire with covered conductor to reduce faults and ignition risk from contact from objects as well as safely raise windspeed thresholds for PSPS in targeted areas. More than 6,450 miles of covered conductor installed since 2018.



## FIRE RESISTANT POLES & WRAPS

Installing mix of composite poles and wooden poles with fire-resistant wrap to reduce risk of damaged poles during an emergency. Expanding the deployment of fire-resistant wrap on structures.



## PROTECTIVE DEVICES

Using faster grid protection settings to interrupt electric current more quickly when there's an electrical fault, remote-controlled sectionalizing devices to segment and isolate portions of circuits during PSPS events and deploying Rapid Earth Fault Current Limiter (REFCL) to instantly reduce energy released from a downed line.



## TARGETED UNDERGROUNDING

Undergrounding in targeted high fire areas and based on risk criteria and feasibility, nearly eliminating wildfire and PSPS risks associated with electric facilities. About 40 miles of undergrounding completed since 2021.



## TRANSMISSION HARDENING

Expanding and evaluating strategies to address ignition risks on the higher voltage transmission system and increase system robustness.

# GRID HARDENING IN KERN COUNTY

## GRID HARDENING WORK

**1,100+ MILES**

OF COMPLETED COVERED  
CONDUCTOR

**92 MILES**

OF PLANNED COVERED  
CONDUCTOR

**2 MILES**

OF PLANNED  
UNDERGROUNDING

## PROTECTIVE DEVICES

**2**

2025 PLANNED CIRCUITS  
WITH REFCL

**2**

2027 PLANNED CIRCUITS  
WITH REFCL

**37**

REMOTE CONTROLLED  
AUTOMATIC RECLOSERS

**42**

FAST CURVE CIRCUITS

**3**

KERN/TULARE FAST CURVE  
CIRCUITS

# GRID HARDENING IN TULARE COUNTY

## GRID HARDENING WORK

**~260 MILES**  
OF COMPLETED COVERED  
CONDUCTOR

**82 MILES**  
OF PLANNED COVERED  
CONDUCTOR

**19 MILES**  
OF PLANNED  
UNDERGROUNDING

## PROTECTIVE DEVICES

**25**  
REMOTE CONTROLLED  
AUTOMATIC RECLOSERS

**20**  
FAST CURVE CIRCUITS

**3**  
KERN/TULARE  
FAST CURVE CIRCUITS

# **CUSTOMER PROGRAMS & RESILIENCY**

Traeger Cotten

# MITIGATING IMPACTS OF PSPS

## COMMUNITY CARE RESOURCES

- **92 Community Resource Centers** (9 resilient)
- **8 Community Crew Vehicles**
- **8 Resiliency Zone Sites**

## REBATES & PROGRAMS

- **Critical Care Battery Backup Program** for customers on Medical Baseline Allowance
- **In-Event Battery Loan Program** for customers with medical devices or assistive technologies
- **\$200 / \$600 rebates** on qualifying portable generators
- **\$150 rebate** on portable power stations
- **Self-Generation Incentive Program (SGIP)** for energy storage and solar
- **Microgrid Incentive Program (MIP)** for complex multi-property microgrids

## ACCESS & FUNCTIONAL NEEDS (AFN) OUTREACH

- **2-1-1 referrals** for transportation, lodging and food assistance
- **Disability Disaster Access and Resource (DDAR)** for emergency preparedness, SCE program sign-ups, long-term battery loans, fuel, ADA accommodations
- **Food bank** partnerships
- **Leveraging CBOs** to communicate with communities

# PREPARATION FOR BUSINESS CUSTOMERS

If security gates are electric, learn how to override or manually operate

Define employee roles and responsibilities during an outage

Create a list of critical equipment to turn off during an outage to prevent damage

Periodically test emergency lighting

Identify an off-site meeting area in case you need to evacuate

If you have a portable generator, identify an outdoor location where you can safely use it

If you do not have a generator, have a plan in place to rent one, if needed

Keep flashlights in easy-to-find spots, and make sure they're charged or have spare batteries

Use your cellphone as a Wi-Fi hotspot

# BACKUP GENERATORS

Typically, power is out until the generator is running

Requires interconnection application when connected to panel

May require air permit

Most are gas or diesel (requiring refueling), some are natural gas

Can be noisy & foul smelling

Not considered a clean source of power

Can be automated with Automatic Transfer Switch (ATS) and controls

Requires maintenance, testing, training, etc.

Safety considerations

# MICROGRIDS

Typically consist of solar + battery storage + backup diesel/gas generator

Interconnected in parallel with the grid (NEM/SBP)

Have blue-sky benefits (peak shaving, load shifting, demand response)

Can use existing solar and energy storage

Eligible for tax benefits / grants

Require significant square footage

Behind-the-meter microgrids are becoming common

Require interconnection agreement

# Q&A

## REVIEW POSTED QUESTIONS

Christine Fanous

If you are having trouble with the Q&A function

**Please submit questions via email**

SCE Wildfire Safety Outreach <[wildfireoutreach@sce.com](mailto:wildfireoutreach@sce.com)>

# HELPFUL INFORMATION & RESOURCES

SCE Wildfire Webpage – [sce.com/wildfire](https://sce.com/wildfire)  
PSPS Webpage – [sce.com/psps](https://sce.com/psps)

## SCE Notifications

- Sign up for PSPS alerts – [sce.com/pspsalerts](https://sce.com/pspsalerts)
- Sign up for the Energized by Edison Wildfire Mitigation Newsletter – [energized.edison.com/newsletter](https://energized.edison.com/newsletter)

## Situational Awareness

- SCE outage map – [sce.com/outagemap](https://sce.com/outagemap)
- PSPS information – [sce.com/psps](https://sce.com/psps)
- PSPS decision making – [sce.com/pspsdecisionmaking](https://sce.com/pspsdecisionmaking)
- Role of weather in PSPS – [sce.com/fireweather](https://sce.com/fireweather)
- Weather awareness for PSPS – [sce.com/wildfire/weather-awareness](https://sce.com/wildfire/weather-awareness)
- Weather & fire detection map – [sce.com/wildfire/situational-awareness](https://sce.com/wildfire/situational-awareness)
- Wildfire cameras – [alertcalifornia.org](https://alertcalifornia.org)
- Weather stations – [sce.com/weatherstations](https://sce.com/weatherstations)
- CPUC high fire threat district maps – [ia.cpuc.ca.gov/firemap/](https://ia.cpuc.ca.gov/firemap/)

## Preparedness

- SCE emergency preparedness – [sce.com/safety/family/emergency-tips](https://sce.com/safety/family/emergency-tips)
- CAL FIRE preparedness – [readyforwildfire.org](https://readyforwildfire.org)

## Vegetation Management

- Vegetation Management – [sce.com/safety/power-lines](https://sce.com/safety/power-lines); contact 1-800-655-4555 or [safetrees@sce.com](mailto:safetrees@sce.com)

## Targeted Undergrounding

- Targeted Undergrounding – [sce.com/tug](https://sce.com/tug); contact 1-888-331-0010 or [SCEprojects@sce.com](mailto:SCEprojects@sce.com)

## Customer Programs & Rebates

- SCE Customer Programs & Resources – [sce.com/customerresources](https://sce.com/customerresources)
- SCE Marketplace (rebates and programs) – [marketplace.sce.com](https://marketplace.sce.com)
- SCE Critical Care Backup Battery Program – [sce.com/ccbb](https://sce.com/ccbb)
- SCE Access & Functional Needs Resources – [sce.com/afn](https://sce.com/afn)
- SCE Medical Baseline Program – [sce.com/medicalbaseline](https://sce.com/medicalbaseline)
- Self-Generation Incentive Program (SGIP) – [sce.com/sgip](https://sce.com/sgip) or [selfgenca.com](https://selfgenca.com)
- SCE Income Qualified Programs: [sce.com/iqp](https://sce.com/iqp)
- SCE Customer Support: 1-800-655-4555

## Community Meetings

- Join SCE's wildfire safety community meetings – [sce.com/wildfiresafetymeetings](https://sce.com/wildfiresafetymeetings)

## Energized by Edison

- Stories and videos on SCE's wildfire safety efforts – [edison.com/wildfire-safety](https://edison.com/wildfire-safety)
- Corrections to recent articles & online content - [edison.com/edison-for-the-record](https://edison.com/edison-for-the-record)

# THANK YOU

**Please take a moment to fill out our brief survey.**



Contact email:  
SCE Wildfire Safety Outreach  
[wildfireoutreach@sce.com](mailto:wildfireoutreach@sce.com)



# **SCE Wildfire Safety Community Meeting: Kern and Tulare Counties – July 16, 2025**

**THANK YOU for joining us.**

**This meeting has concluded.**

Contact email:  
SCE Wildfire Safety Outreach  
[wildfireoutreach@sce.com](mailto:wildfireoutreach@sce.com)