



SOUTHERN CALIFORNIA  
**EDISON**<sup>®</sup>

OUR COMMITMENT TO  
KEEPING SANTA  
CLARITA SAFE

THIS MEETING WILL  
BEGIN PROMPTLY AT  
6:00 P.M.





# AGENDA

---

Welcome | Safety | Introductions

**Natalie Yanez**

Government Relations Manager, Local Public Affairs

---

City of Santa Clarita

**Mayor Bill Miranda**

---

LA County Sheriff's Department

**Captain Brandon Barclay**

---

Weather & Fire Science

**Jude Schneider**

Senior Advisor, Wildfire PSPS Response, Business Resiliency

---

Wildfire Safety  
PSPS Operations Update /Grid  
Hardening

**Raymond Fugere**

Director, Asset & System Intelligence

---

Customer Programs and Resiliency

**Lori Blackwell**

Principal Manager, PSPS Customer Support

---

Q&A

**Natalie Yanez**

Government Relations Manager, Local Public Affairs

---

Closing Remarks

**Natalie Yanez**

Government Relations Manager, Local Public Affairs

---

# SAFETY NEAR DOWNED WIRES



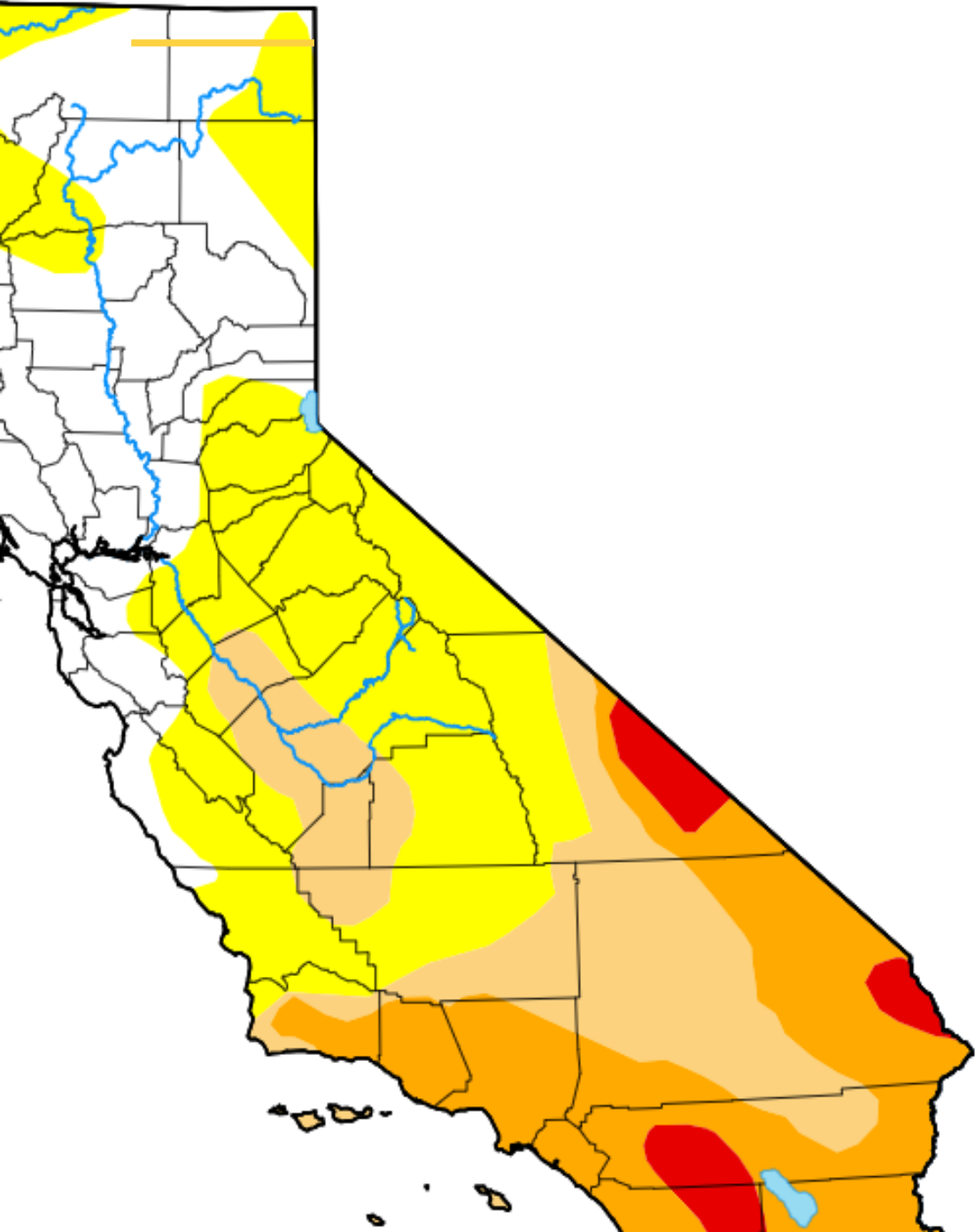
- **Stay away and call 911**
- Stay clear of anything contacting downed power wires
- Stay clear of vehicles near downed power wires
- If escape is necessary, do so carefully

*Damage observed while conducting power restoration patrols on circuits de-energized during the January 2025 PSPS events.*



# **WEATHER & FIRE SCIENCE**

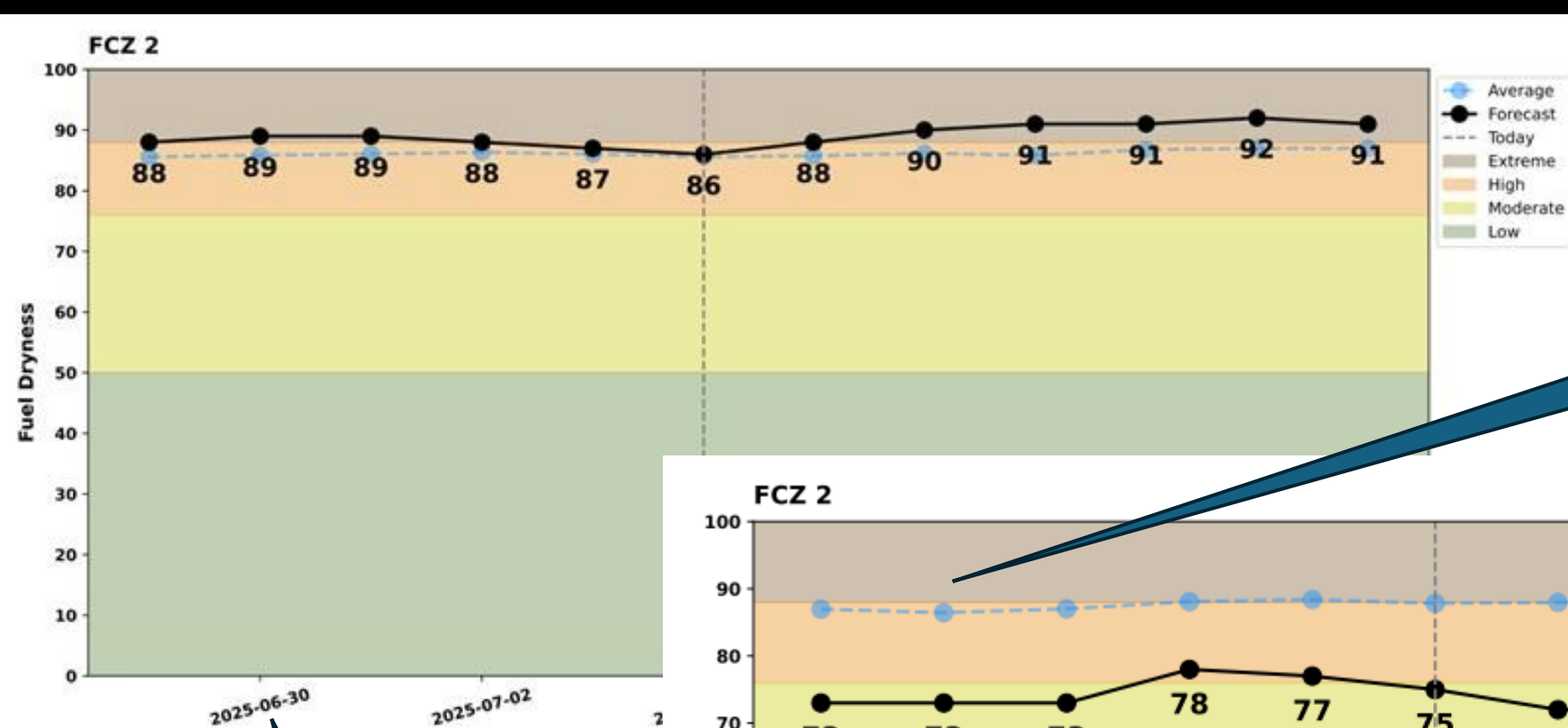
**Jude Schneider**



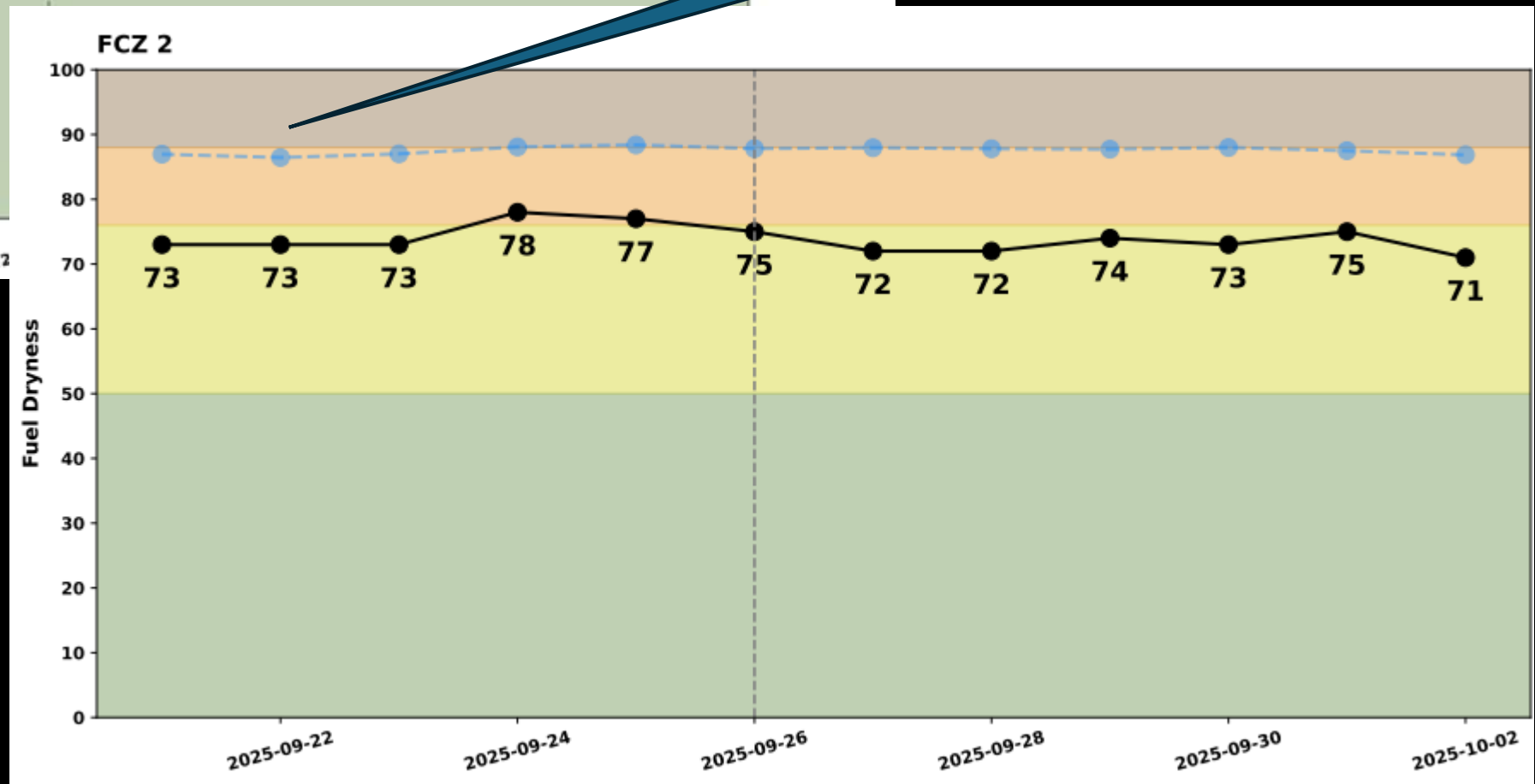
## WEATHER AND WILDFIRE FORECAST

Large fires possible during windy, dry periods prior to the onset of winter precipitation.

PSPS will continue during elevated windy and dry periods.



9/22/25

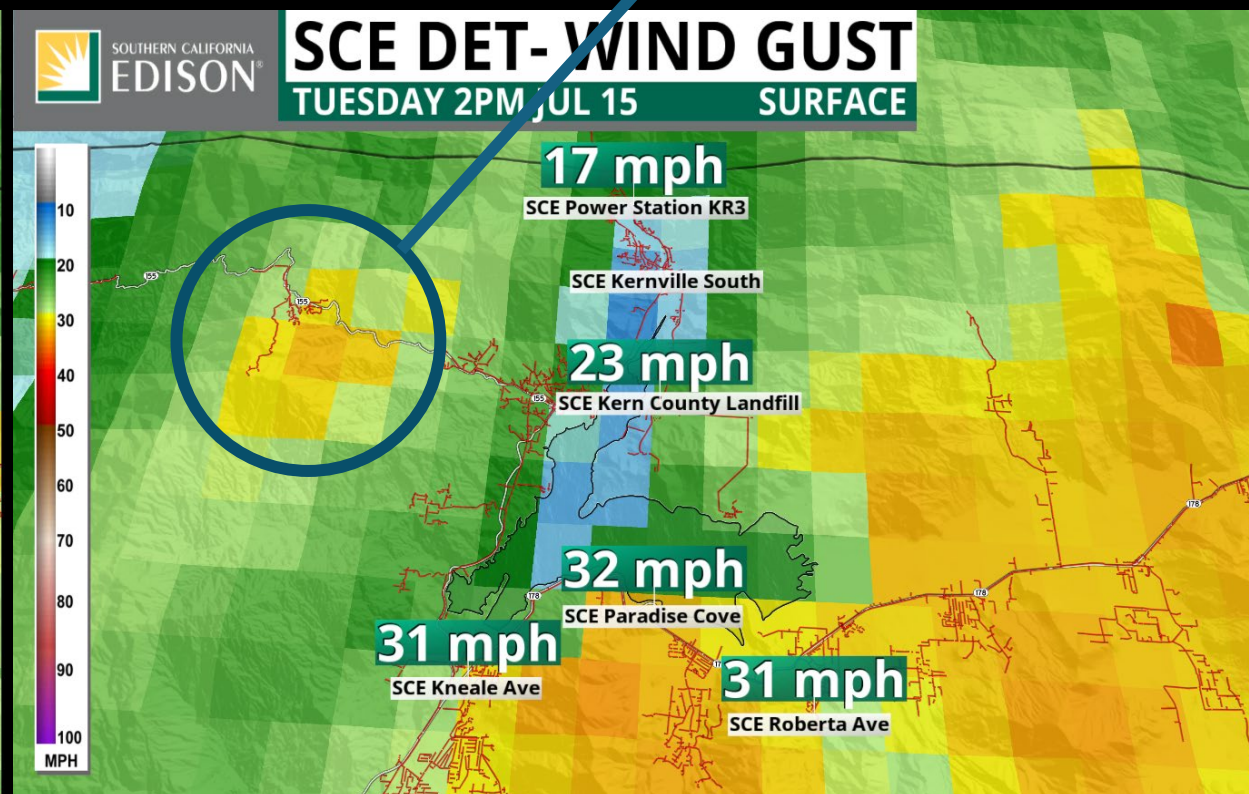
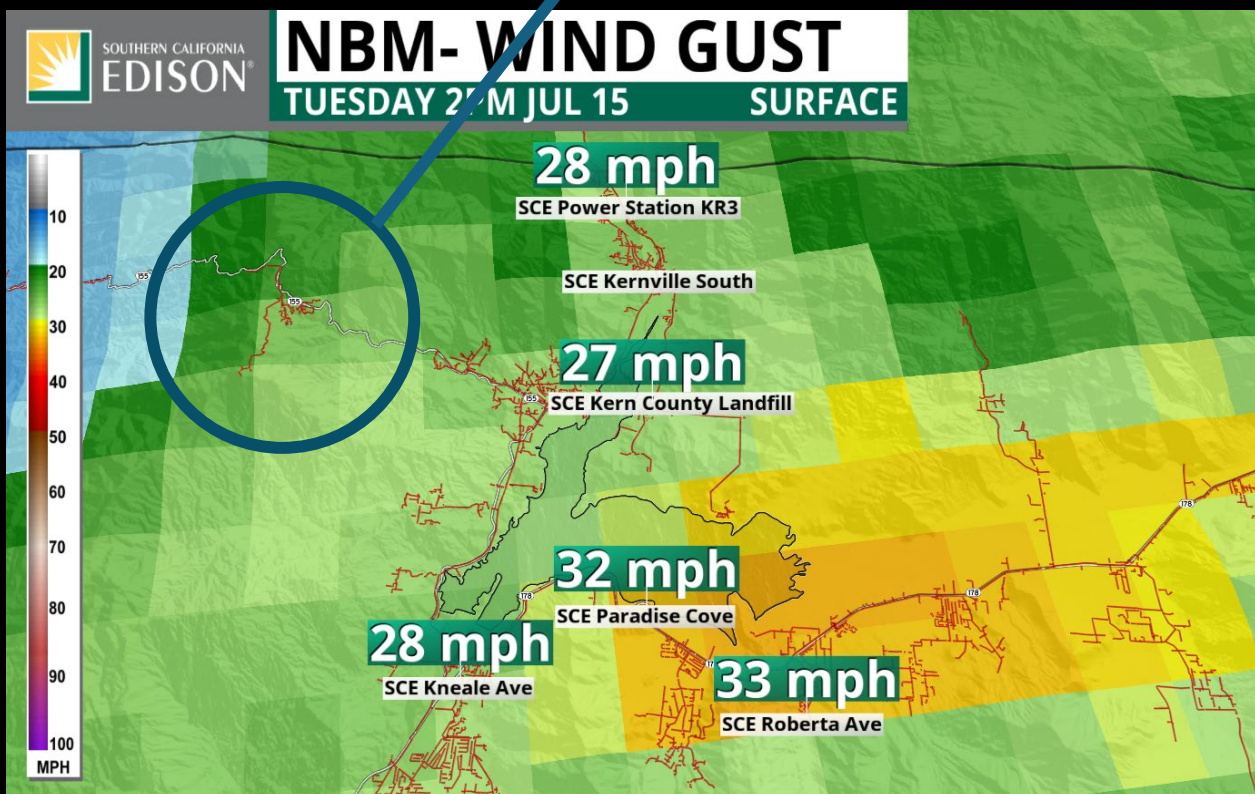


6/30/25

# NATIONAL WEATHER SERVICE VS. SCE FORECAST GUIDANCE

NOAA-based model averages across larger areas (3km<sup>2</sup>)

More granular (2km<sup>2</sup>) SCE forecast sees weather for individual circuits

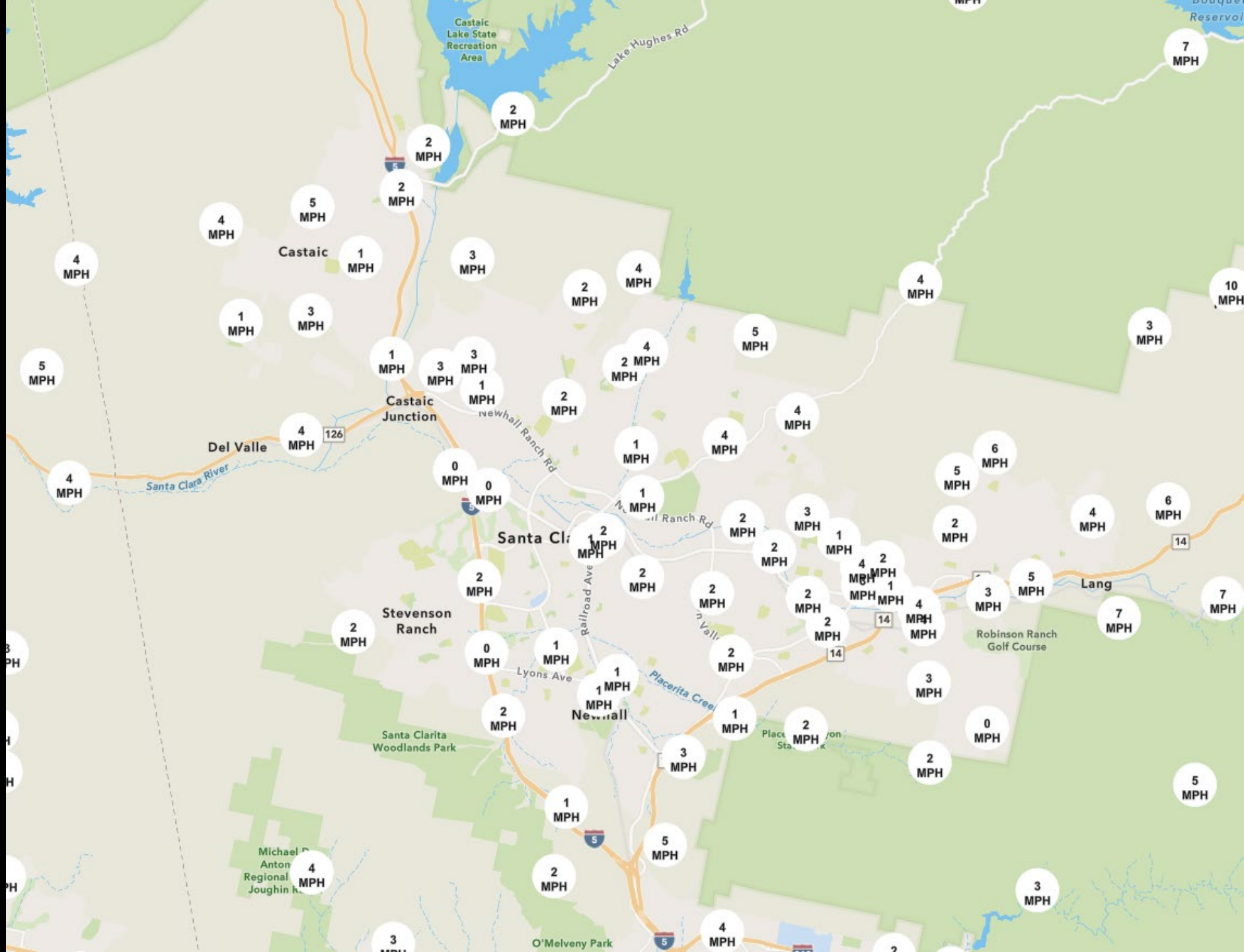




# STRATEGIC WEATHER STATION – SANTA CLARITA

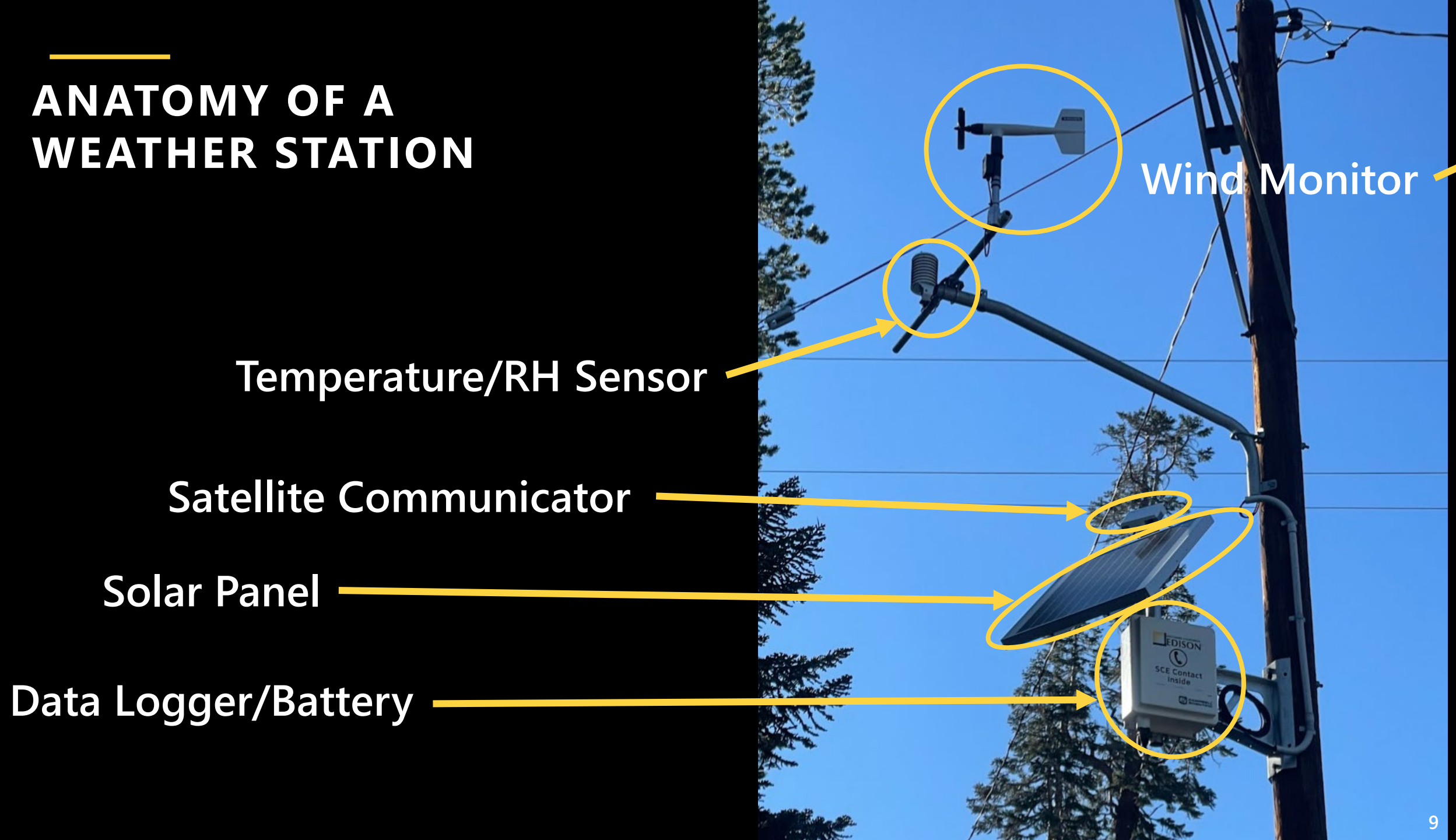
~1,870 weather  
stations

A dense  
network of  
weather stations  
enables strategic  
de-energization  
decisions.





# ANATOMY OF A WEATHER STATION



Wind Monitor

Temperature/RH Sensor

Satellite Communicator

Solar Panel

Data Logger/Battery

# **PSPS OPERATIONS UPDATE & GRID HARDENING**

**Raymond Fugere**

## GRID HARDENING IN SANTA CLARITA

**490.5  
Miles**

**COMPLETED  
COVERED  
CONDUCTOR**

**22**

**COMPLETED REMOTE  
CONTROLLED SWITCHES  
/AUTOMATIC  
RECLOSERS**

**0.2 Miles**

**COMPLETED  
TARGETED  
UNDERGROUND**

**49.5 Miles**

**PENDING  
COVERED  
CONDUCTOR**

**5**

**PENDING REMOTE  
CONTROLLED SWITCHES  
/AUTOMATIC RECLOSERS**

**13.6 Miles**

**PENDING  
TARGETED  
UNDERGROUND**



# VEGETATION MANAGEMENT

## 2025 Progress

Inspected and  
cleared brush  
at **88,238** poles

- Hazard tree removal beyond traditional trim zone
- SCE currently inspects every year up to **1.6** million trees that might pose a hazard to power lines throughout its **50,000**-square-mile service area
- More than **749,000** are located in high fire risk areas
- Vegetation removal at poles and around power lines
- Remote sensing and satellite technology utilized to enhance inspections and vegetation management

# UPDATES TO PSPS PROGRAM

## FPI AND WINDSPEED CRITERIA REFINEMENTS

- Updated application of FPI when broader fire weather concerns identified
- Refined application of windspeed discount factors
- When new FPI criteria is applied, suggests 20-40% more PSPS activation days and event size is up to twice as large in 2025 assuming similar weather to 2024

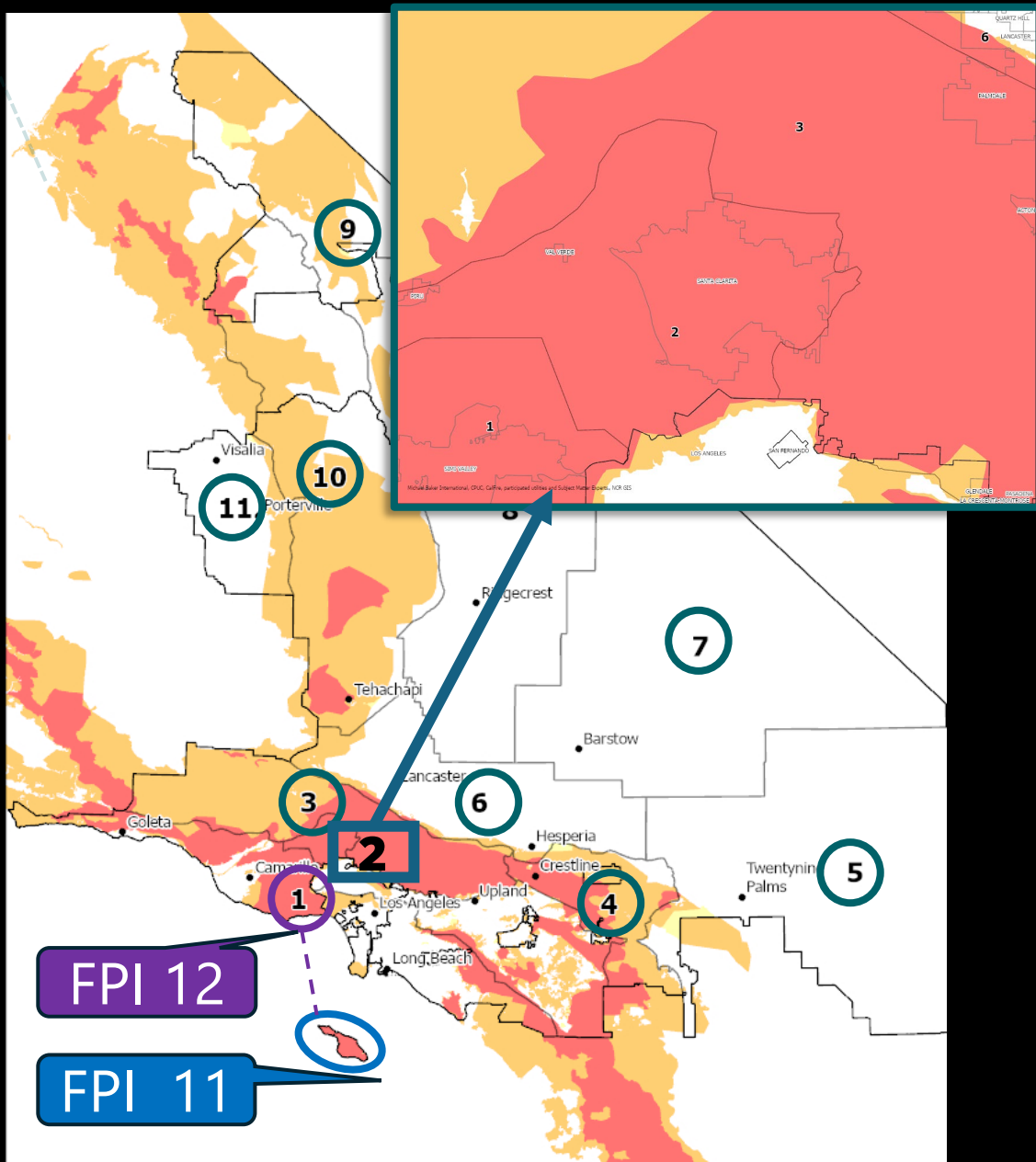
## NEW HFRA CIRCUITS / EXPANDED BOUNDARIES

- 32 new circuits and ~47,000 more customer accounts now in HFRA and in scope for PSPS
- Expanded precautionary boundaries around HFRA; up to ~43,000 more customer accounts could be in scope for PSPS
- Includes areas and customers that have not experienced PSPS in the past

## 24/7 MONITORING AND ALERT SYSTEM

- Capturing unexpected weather (outside of current PSPS activation) meeting PSPS de-energization thresholds
- When necessary, circuits will be de-energized immediately, day or night
- In these rare, time-sensitive occurrences, customer notifications and website information will follow as soon as possible

# FIRE POTENTIAL INDEX THRESHOLDS



## FIRE POTENTIAL INDEX (FPI) 1-17

is a formula used to estimate the potential of fire ignition and spread.

## HIGH FIRE RISK AREAS (HFRA<sub>s</sub>)

correspond to CPUC High Fire Threat Districts (HFTD), with small deviations.

HFRA Tiers 2-3:



## FIRE CLIMATE ZONES (FCZ<sub>s</sub>)

group similar vegetation, weather, topography, and fire history.

FCZs 2-11:    FCZ 1:  

FPI thresholds are set for each FCZ. *When specific conditions suggest more risk, baseline FPI thresholds may be reduced.*



# WINDSPEED THRESHOLDS

Windspeed thresholds for activation are based on **forecasts**, and Windspeed triggers for **shut offs** are based on **actual weather**



**NWS Wind Advisory level:**  
**31 mph sustained winds or 46 mph gusts or when speeds reach local extremes.**

**Activation threshold for:**  
Uncovered/partially-covered circuits

**Shutoff trigger for:** Uncovered segments\*



**NWS High Wind Warning:**  
**40 mph sustained windspeeds or 58 mph gusts.**

**Activation threshold for:**  
Fully covered circuits \*

**Shutoff trigger for:** Fully-covered segments \*

\* Windspeed triggers are adjusted (lowered) based on circuit, environment and event-specific factors to determine circuit specific shut off values for each event.

# PSPS NOTIFICATION TIMELINE

**4-7 DAYS  
AHEAD** SCE begins planning for potential  
PSPS

**3 DAYS  
AHEAD  
WHEN  
POSSIBLE** **Incident Management Team  
activated**  
Initial notification sent to all  
customers and public safety partners

**DAILY  
UPDATES  
1-2 DAYS  
AHEAD** Daily update notifications sent as  
the weather forecast is refined

**1-4 HOURS  
BEFORE  
SHUTOFF** Expected shutoff notification

## PLANNING AND MONITORING

**POWER  
SHUTOFF** Sent after  
authorization

**RESTORATION  
EFFORTS  
BEGIN** Sent when  
restoration  
patrols begin

**POWER  
RESTORATION** Sent after  
inspection

## OUTAGE AND RECOVERY

*Advance notifications may  
not be possible in unexpected  
weather conditions.*

	Is it PSPS?	Is it Maintenance?	Is it Repair?
Notifications	<p>First notification is typically 1-3 days before the planned shut off and mentions high winds and fire conditions</p> <p>Mandatory</p>	<p>First notification is typically up to 10 days before the planned shut off and mentions the need for repairs to area electrical infrastructure</p> <p>Optional</p>	<p>First notification is typically up to 10 minutes after the power shuts off and lets customers know that SCE is responding</p> <p>Optional</p>
Average length	23 hours, but can be longer	5 hours	Depends on complexity: usually same day restoration

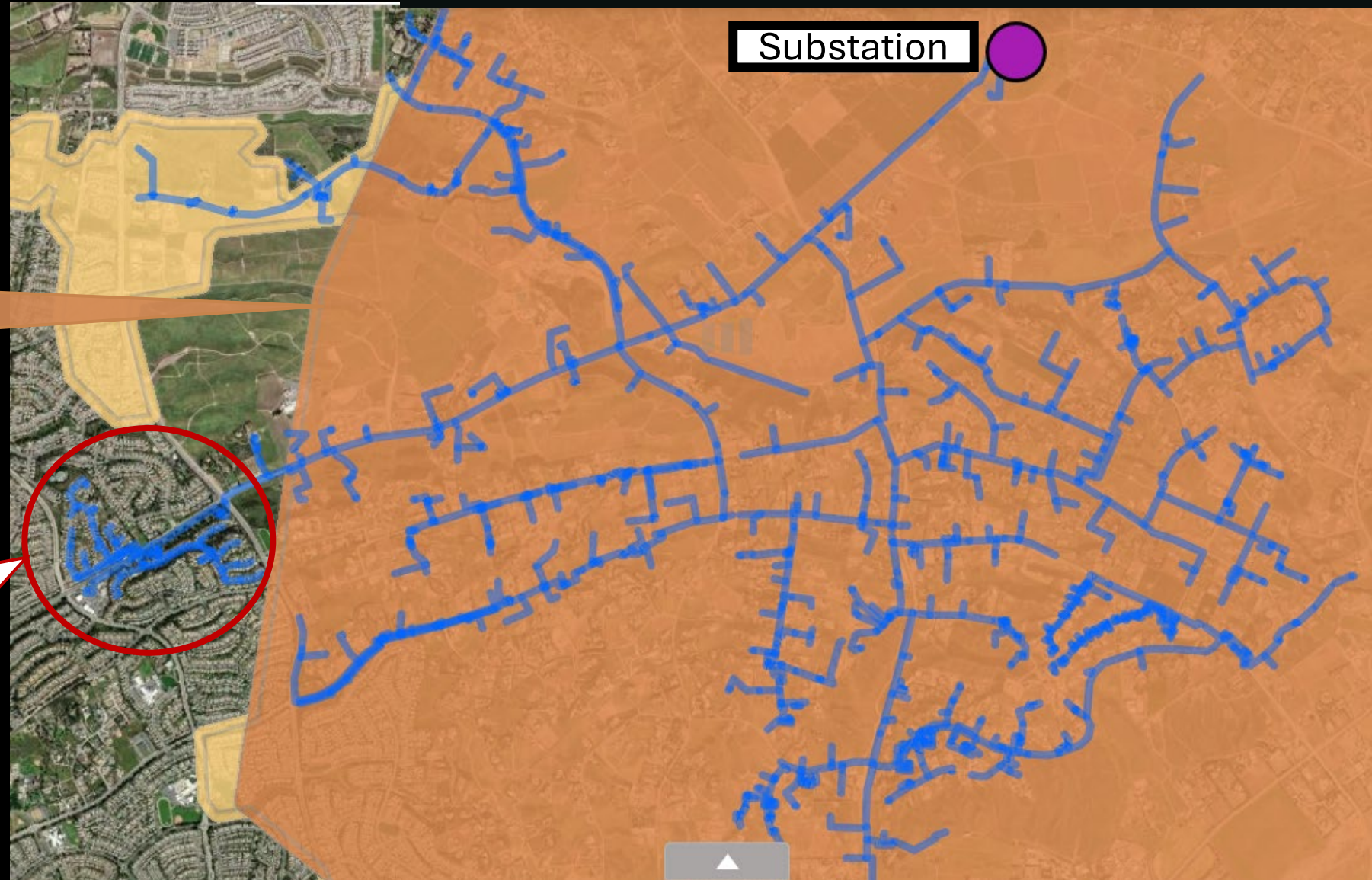


# WHY IS MY POWER OUT WHEN IT ISN'T WINDY?

## Actual SCE Circuit

Tier 3 High Fire Risk Area

Undergrounded neighborhood



Maps available at  
[drpep.sce.com](http://drpep.sce.com)



# WHY DOES MY NEIGHBOR HAVE POWER WHEN I DON'T?

De-energized

Energized

Yellow shaded area is Tier 2 HFRA and is will be shut off during PSPS

AI-generated image for illustrative purposes







# **CUSTOMER SUPPORT AND RESILIENCY**

**Lori Blackwell**



---

## MITIGATING IMPACTS OF PSPS – COMMUNITY CARE RESOURCES

### **100 Community Resource Centers**

(9 resilient) that provide water, snacks, thermal bags for medication, and access to charging stations for mobile devices and medical equipment

### **8 Community Crew Vehicles**

deployed to locations where we can't open an indoor center; provide similar services as Community Resource Centers

### **8 Resiliency Zone Sites**

powered by backup generator provided by SCE to operate even if the local power is down



---

## CUSTOMER BACK-UP BATTERY PROGRAMS

- **Critical Care Battery Backup Program** for customers on Medical Baseline Allowance
- **In-Event Battery Loan Program** for customers with medical devices or assistive technologies
- **\$200 / \$600 rebates** on qualifying portable generators
- **\$150 rebate** on portable power stations
- **Self-Generation Incentive Program (SGIP)** for energy storage and solar

# ADDITIONAL SUPPORT

**Access & Functional Needs (AFN)  
Resources**



**Disability Disaster Access and  
Resource (DDAR)**



**Local Food Banks**



**Community Based  
Organizations**



# **MICROGRIDS FOR RESIDENTIAL CUSTOMERS**

**Typically consist of  
solar + battery storage**

**Have blue-sky benefits  
(time-of-use load  
shifting, demand  
response)**

**Solar can require  
significant rooftop  
square footage**

**Interconnected in  
parallel with the grid**

**Eligible for tax  
benefits/grants**

**Require interconnection  
agreement**





# BACKUP GENERATORS

**Safety  
considerations**

**Requires  
interconnection  
application when  
connected to panel**

**Most are gas or  
diesel (requiring  
refueling), some  
are natural gas**

**Requires  
maintenance,  
testing, training,  
etc.**

**Can be noisy &  
foul smelling**

**Not considered a  
clean source of  
power**

# PSPS CUSTOMER COMMUNICATIONS

## Notifications

- SCE provides PSPS notifications through various communication channels
  - SCE Account Holders (email, text, and voice call)
  - Address Level Alerts
- Non-customers can sign up at [scepsps.com](https://scepsps.com)

## SCE Outage Map

- Consolidated outage map that incorporates PSPS outages at [sce.com/outagemap](https://sce.com/outagemap)

The screenshot displays the SCE Outage Map website. On the left, a sidebar titled "Power Outages" contains a search bar, a link to "Click here to enter the outage number and check the status", and three main sections: "Current Outages" (28 Outages | 1,065 Customers Impacted), "Upcoming Scheduled Outages" (1,531 Outages Scheduled | 68,293 Customers Possibly Impacted), and "Public Safety Power Shutoff (PSPS)" with a search prompt and a "below" link. Below these are links for "Not Seeing Your Outage?" (with a "Report" button) and "Outage Alerts" (with a "Get Alerts" button). The "Community Support" section at the bottom features icons for "Resource Centers", "Crew Vehicles", and "Further Assistance", followed by text about SCE Community Resource Centers and a "More" link. On the right, a map of Southern California shows various locations with yellow warning icons, including Lancaster, Palmdale, Santa Clarita, Simi Valley, Thousand Oaks, Los Angeles, West Covina, Ontario, Corona, Redondo Beach, Long Beach, Anaheim, Santa Ana, Huntington Beach, Lake Forest, Laguna Niguel, and San Clemente. The map includes a search bar, a "Apply Filters" button, and a "Home" button.

# Q&A

*If you have a question or concern that is not addressed today, please email us at **SCE**  
**Wildfire Safety Outreach:**  
[wildfireoutreach@sce.com](mailto:wildfireoutreach@sce.com)*



Share your  
feedback about  
the meeting

# HELPFUL INFORMATION & RESOURCES

SCE Wildfire Webpage – [sce.com/wildfire](https://www.sce.com/wildfire)  
PSPS Webpage – [sce.com/psps](https://www.sce.com/psps)

## SCE Notifications

- Sign up for PSPS alerts – [sce.com/pspsalerts](https://www.sce.com/pspsalerts)

## Situational Awareness

- SCE outage map – [sce.com/outagemap](https://www.sce.com/outagemap)
- Role of weather in PSPS – [sce.com/fireweather](https://www.sce.com/fireweather)
- Weather awareness for PSPS, fire detection map & wildfire cameras – [sce.com/wildfire/weather-awareness](https://www.sce.com/wildfire/weather-awareness)
- Weather stations – [sce.com/weatherstations](https://www.sce.com/weatherstations)
- CPUC high fire threat district maps – [ia.cpuc.ca.gov/firemap/](https://ia.cpuc.ca.gov/firemap/)

## Preparedness

- SCE emergency preparedness – [sce.com/beprepared](https://www.sce.com/beprepared)
- CAL FIRE preparedness – [readyforwildfire.org](https://readyforwildfire.org)

## Safety

- Report an object caught on a power line: 1-800-611-1911

## Vegetation Management

- Vegetation Management – [sce.com/safety/power-lines](https://www.sce.com/safety/power-lines); contact 1-800-655-4555 or [safetrees@sce.com](mailto:safetrees@sce.com)

## Targeted Undergrounding

- Targeted Undergrounding – [sce.com/tug](https://www.sce.com/tug); contact 1-888-331-0010 or [SCEprojects@sce.com](mailto:SCEprojects@sce.com)

## Customer Programs & Rebates

- SCE Customer Programs & Resources – [sce.com/customerresources](https://www.sce.com/customerresources)
- SCE Marketplace (rebates and programs) – [marketplace.sce.com](https://marketplace.sce.com)
- SCE Critical Care Backup Battery Program – [sce.com/ccbb](https://www.sce.com/ccbb)
- SCE Access & Functional Needs Resources – [sce.com/afn](https://www.sce.com/afn)
- SCE Medical Baseline Program – [sce.com/medicalbaseline](https://www.sce.com/medicalbaseline)
- Self-Generation Incentive Program (SGIP) – [sce.com/sgip](https://www.sce.com/sgip) or [selfgenca.com](https://selfgenca.com)
- SCE Income Qualified Programs – [sce.com/iqp](https://www.sce.com/iqp)
- SCE Customer Support: 1-800-655-4555

## Community Meetings

- Join SCE's wildfire safety community meetings – [sce.com/wildfiresafetymeetings](https://www.sce.com/wildfiresafetymeetings)

## Energized by Edison

- Corrections to recent articles & online content – [edison.com/edison-for-the-record](https://www.edison.com/edison-for-the-record)



**THANK YOU for joining us.**

Contact email:

SCE Wildfire Safety Outreach

[wildfireoutreach@sce.com](mailto:wildfireoutreach@sce.com)