

TARGETED UNDERGROUNDING

GORGE CIRCUIT "ROSEBUD - GLENROSE PROJECT" FACT SHEET

BACKGROUND

As part of ongoing wildfire mitigation efforts, Southern California Edison is undergrounding overhead distribution lines in high fire risk areas to continue to reduce the threat of wildfires, particularly in communities where power lines have not been replaced with covered conductor. Undergrounding electrical systems enhances reliability during high winds and storms by shielding infrastructure from hazardous weather conditions. By placing power lines underground, the risk of outages and ignitions caused by vegetation, debris or metallic balloons coming into contact with overhead lines is virtually eliminated. Additionally, underground systems reduce the likelihood of electrical faults that can lead to wire-down incidents.

PROJECT AREA

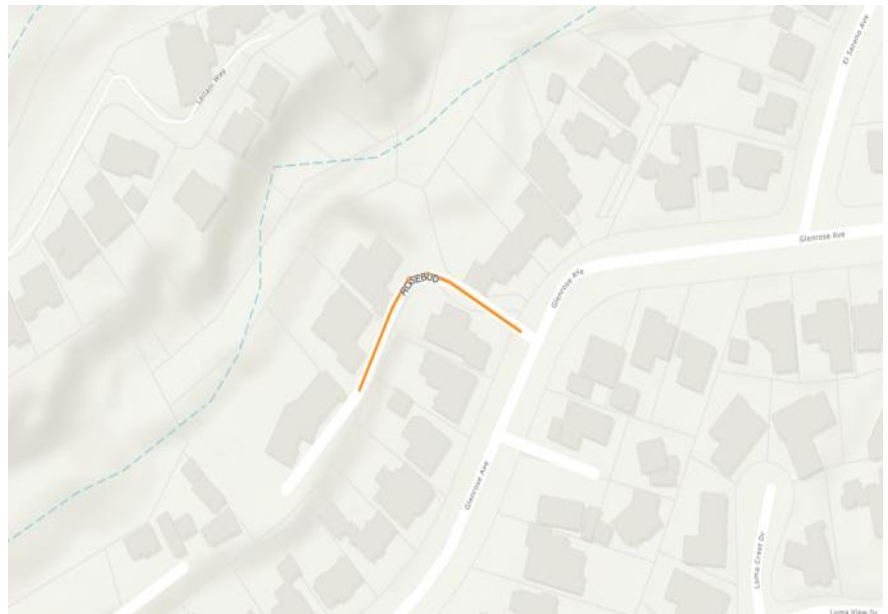
The electrical construction will primarily focus on the following streets in the city of Altadena:

- Glenrose Avenue

Construction activities may impact the surrounding areas as temporary road closures may be necessary to perform the work safely.

WORK TIMELINE

- Underground construction is expected to begin in July 2026 with project completion expected in August 2026.
- Civil construction working hours are Monday through Friday 7 a.m. to 5 p.m. Saturdays 7 a.m. to 1 p.m. (as needed), excludes holidays, red flag days and other inclement weather.
- Electrical crew working hours are 9 p.m. to 5 a.m.
- These dates and times are subject to change due to unforeseen operational factors or inclement weather.



WHAT CUSTOMERS CAN EXPECT DURING CONSTRUCTION

- SCE contractor crews are responsible for potholing, trenching, vault/manhole/conduit installation and asphalt restoration.
- SCE contractor crews will perform cable installation and remove existing high-voltage overhead electrical lines and associated equipment (e.g., transformers, switches). Keep in mind that there may be noise related to construction work during operating hours.
- To protect your safety during construction, there will be road, traffic lane and sidewalk closures.
- Crews will use appropriate traffic control signs and flags.
- Crews, surveyors and/or inspectors may need to access utility poles and equipment on your property. We will attempt to notify you before visiting your property.
- Crews may need to dig, trim or remove vegetation and trees to safely access electrical equipment. Once work is complete, crew's will restore the area to its original condition

RESOURCES

- Learn more about SCE's Targeted Undergrounding (TUG) program: [sce.com/tug](https://www.sce.com/tug). Scroll to Los Angeles County, click on "show more," click on the circuit name "Gorge" to the "Rosebud - Glenwood Project" fact sheet.
- If there are questions, email SCEprojects@sce.com or call 1-888-331-0010 and leave a message. An SCE representative will respond to your inquiry as soon as possible.
- We appreciate your cooperation as we make our electric system more reliable, resilient and ready.