

TARGETED UNDERGROUNDING

GORGE CIRCUIT "PHASE 2" - PROJECT FACT SHEET

BACKGROUND

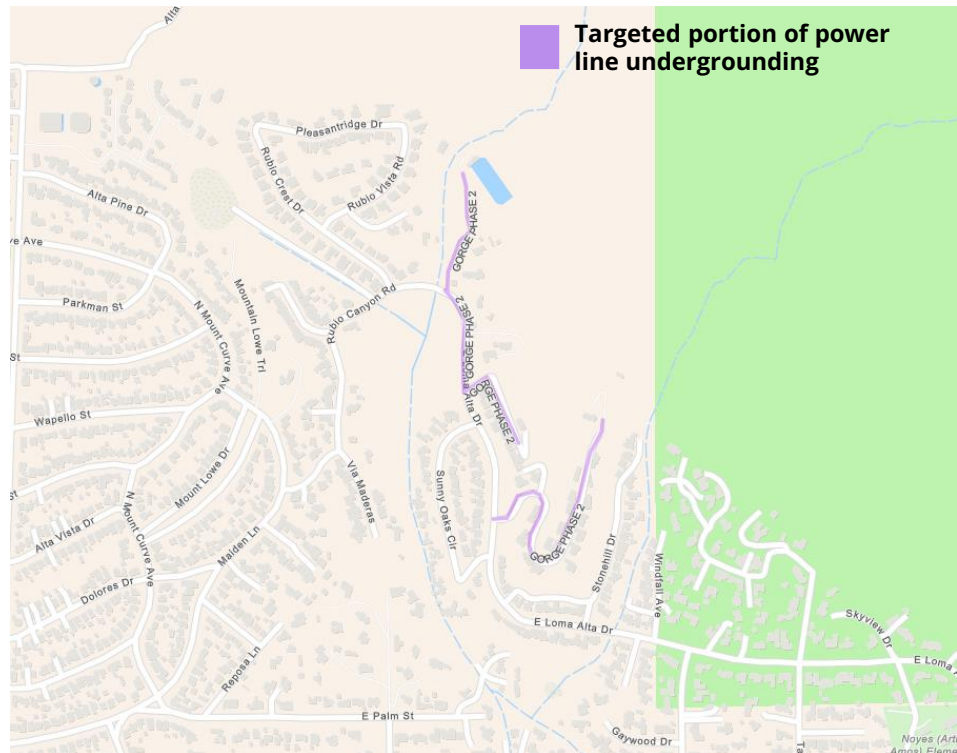
As part of ongoing wildfire mitigation efforts, Southern California Edison is undergrounding overhead distribution lines in high fire risk areas to continue to reduce the threat of wildfires, particularly in communities where power lines have not been replaced with covered conductor. Undergrounding electrical systems enhances reliability during high winds and storms by shielding infrastructure from hazardous weather conditions. By placing power lines underground, the risk of outages and ignitions caused by vegetation, debris, or metallic balloons coming into contact with overhead lines is virtually eliminated. Additionally, underground systems reduce the likelihood of electrical faults that can lead to wire-down incidents. This approach is especially critical in areas where rapid evacuation during wildfires is challenging, providing an added layer of safety and resilience.

PROJECT AREA

The electrical construction will primarily focus on the following streets in the city of Altadena: Loma Alta Drive and Zan Grey Terrace headed east, Camp Huntington Road north of Loma Alta Drive, Loma Alta south of Camp Huntington and a private road north of Sunny Oaks Circle, approximately 1 mile. Please note that construction activities may impact the surrounding areas as temporary road closures may be necessary to perform the work safely.

WORK TIMELINE

- This project is scheduled to start in 2025.
- Civil construction working hours are Monday - Friday 7 a.m. - 5 p.m. Saturdays 7 a.m. - 1 p.m., (as needed). Excludes holidays, red flag days and other inclement weather.
- Electrical crews' working hours are 9 p.m. - 5 a.m.
- Please note these dates and times are subject to change due to unforeseen operational factors or inclement weather.



WHAT CUSTOMERS CAN EXPECT DURING CONSTRUCTION

- SCE contractor crews are responsible for potholing, trenching, vault/manhole/conduit installation and asphalt restoration.
- SCE contractor crews will perform cable installation and remove existing high-voltage overhead electrical lines and associated equipment (e.g., transformers, switches). Keep in mind that there may be noise related to construction work during operating hours.
- To protect your safety during construction, there will be road, traffic lane and sidewalk closures.
- Crews will use appropriate traffic control signs and flags.
- Crews, surveyors and/or inspectors may need to access utility poles and equipment on your property. We will attempt to notify you before visiting your property.
- Crews may need to dig, trim or remove vegetation and trees to safely access electrical equipment. Once work is complete, crew's will restore the area to its original condition

RESOURCES

- Learn more about SCE's Targeted Undergrounding (TUG) program: sce.com/tug. Scroll to Los Angeles County, click on "show more," click on "Gorge-Phase 2" under circuit name.
- If there are questions, please email SCEprojects@sce.com or call 1-888-331-0010 and leave a message. An SCE representative will respond to your inquiry as soon as possible.
- We appreciate your cooperation as we make our electric system more reliable, resilient and ready.