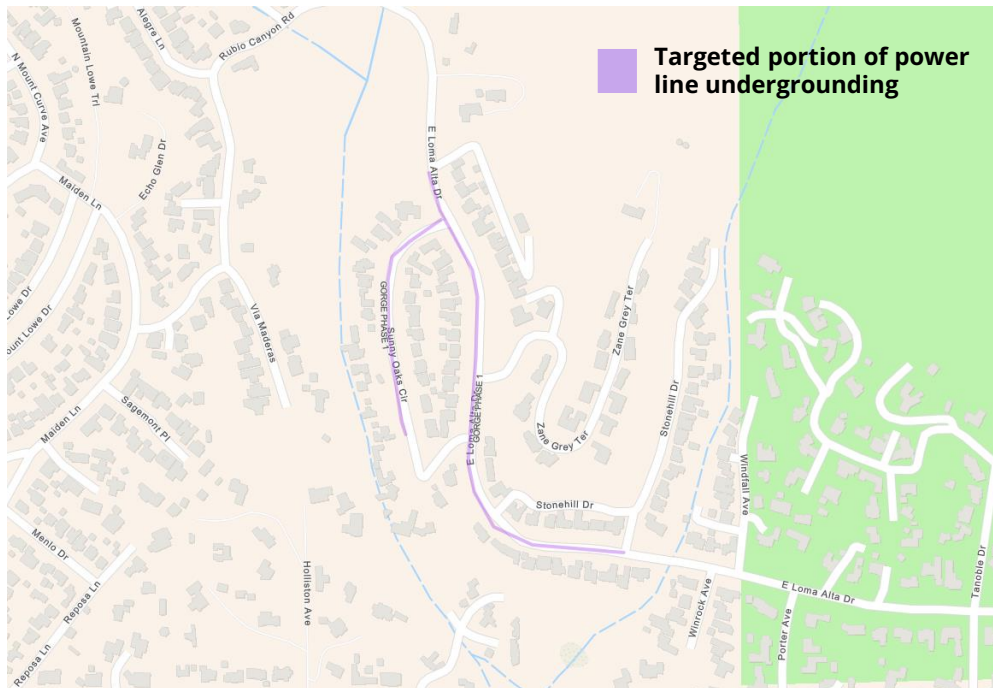


# TARGETED UNDERGROUNDING

## GORGE CIRCUIT "PHASE 1" - PROJECT FACT SHEET

### BACKGROUND

As part of ongoing wildfire mitigation efforts, Southern California Edison is undergrounding overhead distribution lines in high fire risk areas to continue to reduce the threat of wildfires, particularly in communities where power lines have not been replaced with covered conductor. Undergrounding electrical systems enhances reliability during high winds and storms by shielding infrastructure from hazardous weather conditions. By placing power lines underground, the risk of outages and ignitions caused by vegetation, debris, or metallic balloons coming into contact with overhead lines is virtually eliminated. Additionally, underground systems reduce the likelihood of electrical faults that can lead to wire-down incidents. This approach is especially critical in areas where rapid evacuation during wildfires is challenging, providing an added layer of safety and resilience.



### PROJECT AREA

The electrical construction focused on the following streets in the city of Altadena: Loma Alta Drive and Sunny Oaks Drive going south for approximately one mile. Civil and electrical is complete. We will energize at the same time we energize Cresttrail, which is on the Lamanda circuit.

### WORK TIMELINE

This project is complete but not yet energized.

### RESOURCES

- Learn more about SCE's Targeted Undergrounding (TUG) program: [sce.com/tug](https://www.sce.com/tug). Scroll to Los Angeles County, click on "show more," click on "Gorge-Phase1" under circuit name.
- If there are questions, please email [SCEprojects@sce.com](mailto:SCEprojects@sce.com) or call 1-888-331-0010 and leave a message. An SCE representative will respond to your inquiry as soon as possible.
- We appreciate your cooperation as we make our electric system more reliable, resilient and ready.