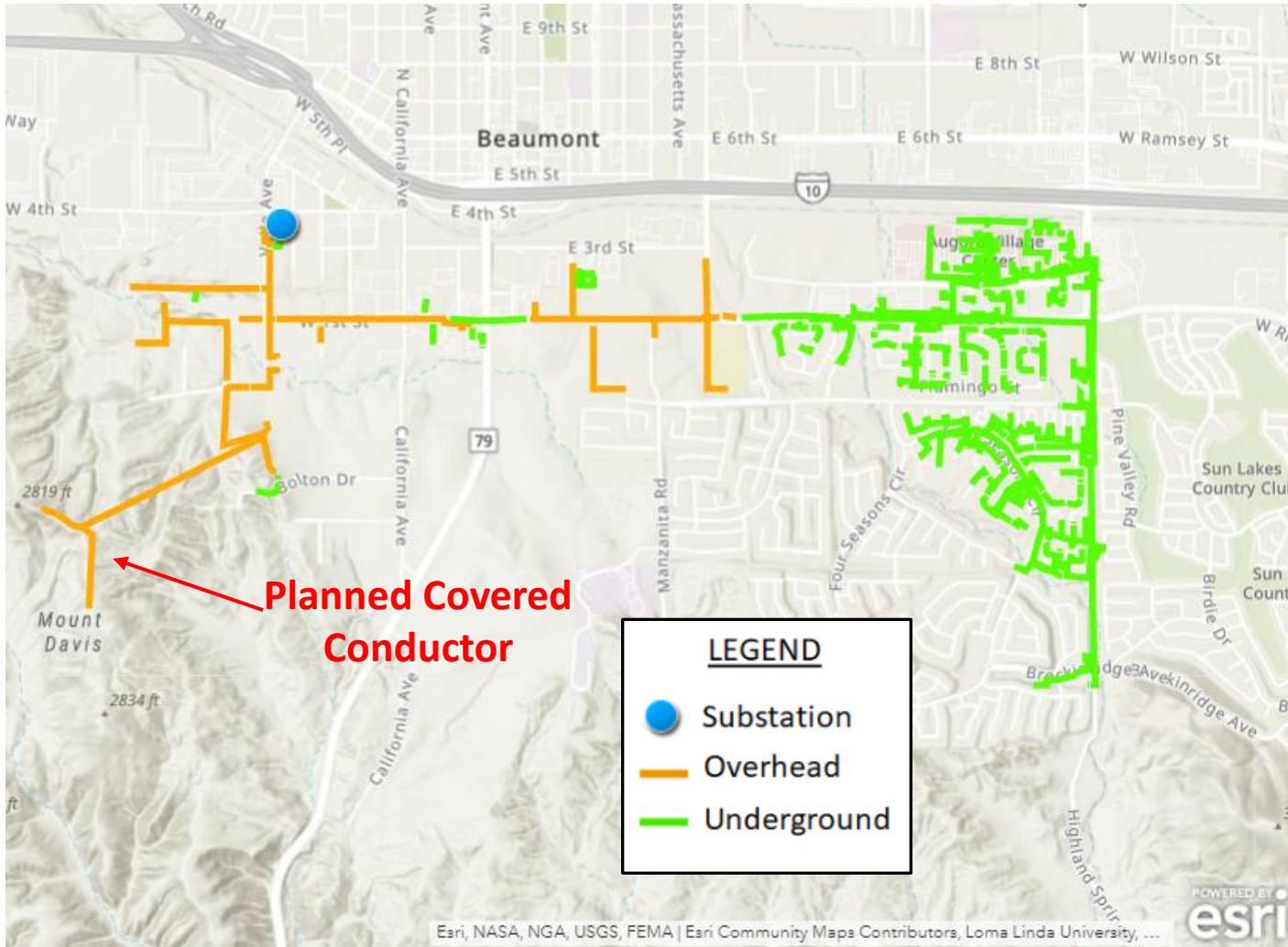


# DUKE CIRCUIT PLAN



## Planned Work:

- New covered conductor has already been installed on most overhead portions of the circuit within High Fire Risk Area
- Replace 0.4 miles of remaining bare overhead wire with new covered conductor

## Expected Improvements:

- **97% reduction** in customer outage time, assuming the same weather conditions in 2020