

Lee Vining Hydroelectric Project

FERC No. 1388

CULTURAL & TRIBAL RESOURCES
Technical Working Group Meeting #2

February 24, 2021

Agenda

- Welcome & Introductions
 - Safety Moment
 - Introductions
 - Review of January TWG notes and action items
 - Meeting goals
- Discussion of Study Plan Requests
 - Objectives
 - Rationale, Nexus
 - Study Area
 - Methods
- Schedule, Next Steps, Action Items
 - Next TWG date(s)
 - Study Plan Titles/Outlines
 - Other action items
- Final Questions

Safety Moment



Lee Vining Relicensing TWG Team

SCE Team

Matthew Woodhall
Project Manager

Martin Ostendorf
Senior Manager

Audry Williams
Senior Archeologist,
Cultural/Tribal TWG Lead

Seth Carr
Operations Manager

Consultant Team

Finlay Anderson
Project Manager

Shannon Luoma
Deputy PM

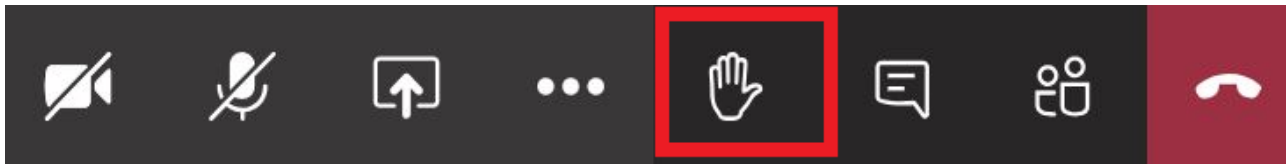
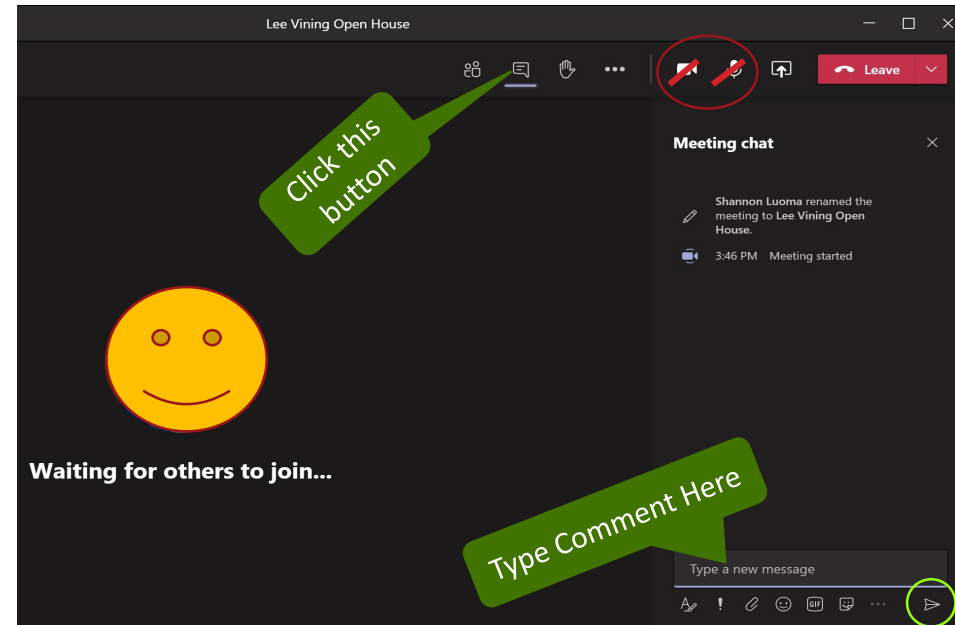
Kelly Larimer
Project Director

Carissa Shoemaker
TWG Coordinator

**Cultural and Tribal
Support**
Lynn Compas
Shelly Davis-King

Meeting Tips and Guidelines

- Please wait to be called on and then unmute your line
 - Introduce yourself (name and affiliation) prior to speaking
- Listen and respect each other
- Stay on topic
- Ask a question by typing it into the chat box during the presentation or by using the raise your hand feature



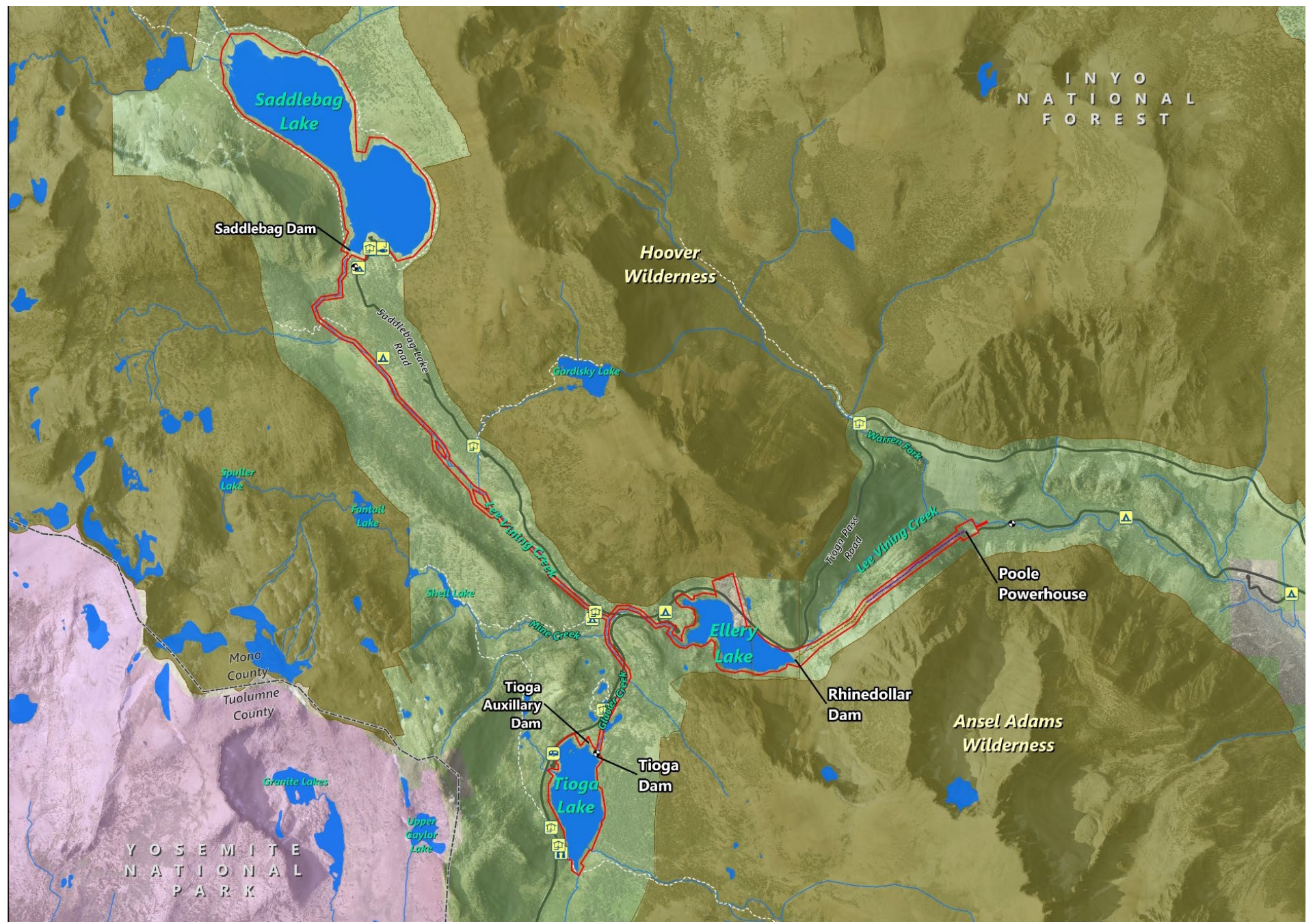
Review of January TWG Notes and Action Items

- The relicensing team circulated updated requests for comments and a team contact list
- Expressed concern that tribal interests are boxed into cultural and tribal TWGs and not considered in other TWGs
- The current project FERC license, relevant amending orders, and the Environmental Assessment have been uploaded to the project website
- Previous consultation letters will be reviewed to see if there were tribal comments or outreach for the PAD
- A summary of the other three TWGs' potential studies is included in this presentation

Confidential/Sensitive Information Disclaimer

- We are aware that sensitive issues may be discussed during this meeting, TWGs are open to a variety of people but this is a safe place to share
- We welcome suggestions on how to include confidential or sensitive information
- If there is information that you'd rather not discuss here, please contact
 - Shelly Davis-King shellydk@frontiernet.net or
 - Audry Williams audry.williams@sce.com

LEE VINING HYDROELECTRIC PROJECT REFRESHER



I N Y O
N A T I O N A L
F O R E S T

Saddlebag Dam

Hoover
Wilderness

Spuller
Lake

Fantail
Lake

Gardisky Lake

Warren Fork

Poole
Powerhouse

Mono
County
Tuolumne
County

Tioga
Auxillary
Dam

Ellery
Lake

Rhinedollar
Dam

Ansel Adams
Wilderness

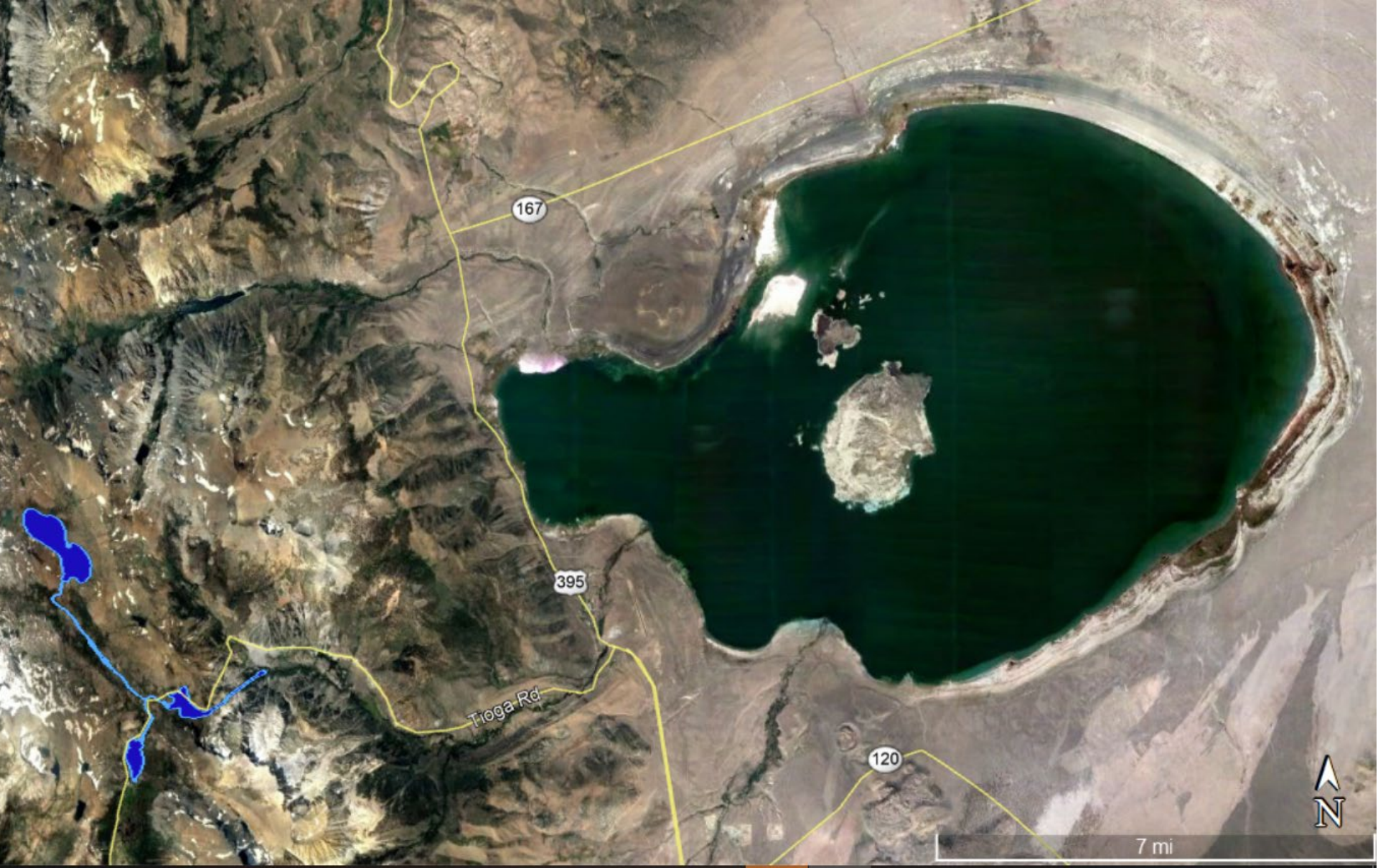
Granite Lakes

Upper
Gaylor
Lake

Tioga
Lake

Tioga
Dam

Y O S E M I T E
N A T I O N A L
P A R K



Lee Vining Project in relation to Mono Lake

Lee Vining Hydroelectric Project

- Federal Energy Regulatory Commission (FERC) License
 - FERC Project No. 1388
 - Issued February 1997
 - 30 year license term
 - Expires January 31, 2027
- Key Outcomes from Previous Relicensing
 - Established minimum release flows with Project operations (i.e., generation) while protecting aquatic resources
 - Conducted focused studies/evaluation on key resource topics
 - Established resource protection measures



Lee Vining Hydroelectric Project

- Located in the eastern slope of the Sierra Nevada primarily on Inyo National Forest lands about 9 miles upstream of Lee Vining, CA
- Situated on Lee Vining Creek, in Mono County
- The Project maintains 3 reservoirs and 4 dams:
 - Saddlebag Dam and Lake
 - Tioga Dam, Auxiliary Dam, and Lake
 - Rhinedollar Dam and Ellery Lake



Aerial Overview of Lee Vining Project Area

Project Facilities

- Saddlebag Dam and Lake
 - Headwaters of Lee Vining Creek
 - 297-acre reservoir
- Tioga Dams and Lake
 - Headwaters of Glacier Creek
 - 2 dams: Main and Auxiliary
 - 73-acre reservoir
- Rhinedollar Dam and Ellery Lake
 - Tioga and Saddlebag drain into here
 - 61-acre reservoir
- Poole powerhouse
 - 11.25 megawatts
- Flowline and penstock connect in Ellery Lake and Poole Powerhouse

See the project description sheet for more details



SCE RELICENSING PROCESS

TWG Materials Provided via Email and Website

- Email
 - Agenda and Request for Comments
 - FERC Scoping Overview Memo
 - Draft Jan 2021 TWG Meeting Notes
 - Study Plan Template
- Website
 - TWG Charter Document
 - Select parts of PAD
 - PAD References List
 - Comprehensive Management Plans List
 - FERC NEPA overview
 - FERC Study Criteria

Goal of Study Plans

- Issuance of a new license is a major “federal action”
- Therefore, FERC will need to go through a NEPA process to make sure that the action is:
 - Consistent with federal laws
 - Federal Power Act
 - National Historic Preservation Act
 - Clean Water Act
 - Endangered Species Act
 - Consistent with current resource management objectives
 - In the public interest

FERC has criteria for study identification

1. Goals and Objectives
 2. Relevant Resource Management Goals and Public Interest considerations
 3. Existing Information
 4. Project Nexus
 5. Proposed Methodology
 6. Level of effort and Cost
- <https://www.ferc.gov/sites/default/files/2020-07/guide-study-criteria.pdf>



A GUIDE TO UNDERSTANDING AND APPLYING THE INTEGRATED LICENSING PROCESS STUDY CRITERIA

*Federal Energy Regulatory Commission
Office of Energy Projects*

March 2012

FERC's Content Requirements for Tribal Resources

Requirements are specified in 18 CFR §5.6(d)(3)(xii): (xii):

- Tribal resources. A description of Indian tribes, tribal lands, and interests that may be affected by the project
Components of this description include:
- (A) Identification of information on resources specified in paragraphs (d)(2)(ii)-(xi) of this section to the extent that existing project construction and operation affecting those resources may impact tribal cultural or economic interests, e.g., impacts of project-induced soil erosion on tribal cultural sites; and
- (B) Identification of impacts on Indian tribes of existing project construction and operation that may affect tribal interests not necessarily associated with resources specified in paragraphs (d)(3)(ii)-(xi) of this Section, e.g., tribal fishing practices or agreements between the Indian tribe and other entities other than the potential applicant that have a connection to project construction and operation.

Stakeholders Discussion of Resource Management Objectives

- Desired Future Conditions (what is your vision for this resource as it relates to the Project area)?
- Data Gaps
- Potential Study Requests
 - Study Area
 - Project Nexus
 - Goals and Objectives

Questions?

Potential Studies for Other Resource Areas

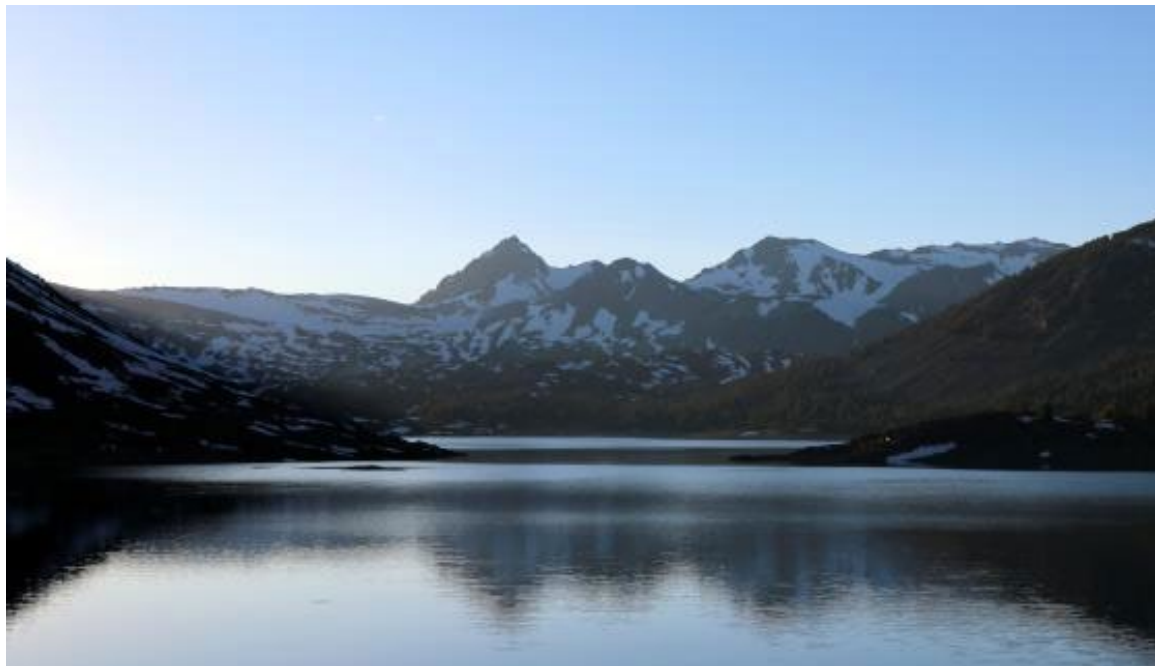
- Aquatics
 - Instream Habitat Assessment
 - Operations model
 - Fish distribution baseline study (creek)
 - Fish distribution baseline study (reservoirs)
 - Sediment and geomorphology
 - *Didymo* algae and other aquatic invasive species
 - Water quality assessment

Potential Studies for Other Resource Areas (continued)

- Terrestrial and Botanical
 - General Wildlife and Rare, Threatened, and Endangered (RTE) Species
 - Botanical (RTE and invasive)
 - Yosemite Toad
 - Focal Riparian Birds
 - Invasive plants sub-unit on *Didymo* algae (to be covered in Aquatics TWG)
 - Assessment of Riparian Community
- Recreation and Land Use
 - Recreation use and needs evaluation
 - Condition of existing recreation facilities
 - Creel (fishing) census
 - Trail history, effects on arch. sites, sensitive species, and overlap with tribal trails (crossover with Cultural/Tribal and Terrestrial)

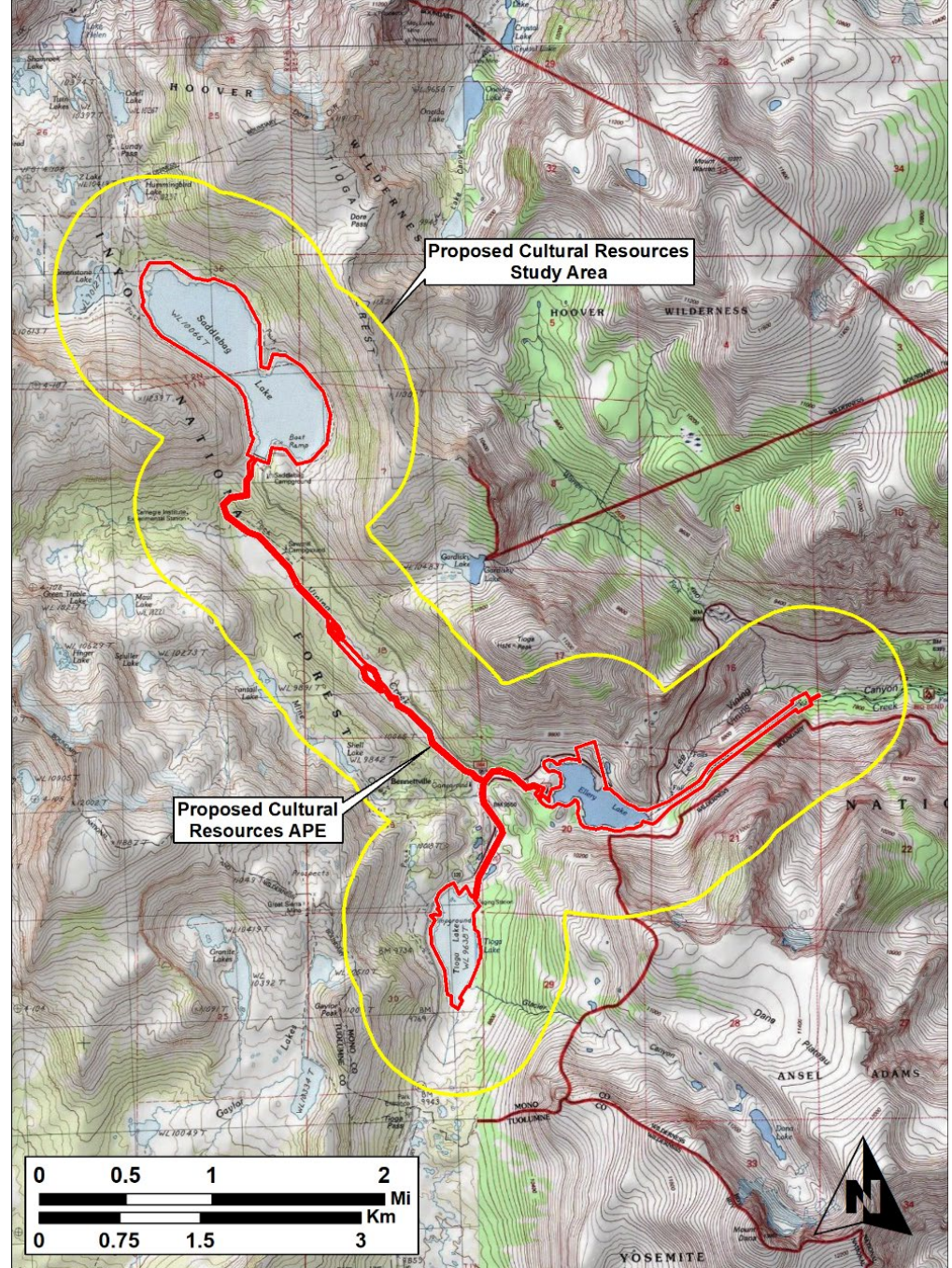
Cultural and Tribal Resources

- ▶ TWG Lead
 - ▶ Audry Williams, SCE Senior Archeologist



Cultural Resources

Proposed Study Area
(0.5-mi buffer) and
Area of Potential
Effect (APE; FERC
Boundary)



Cultural and Tribal Resources

- Cultural Resource
 - A cultural resource can be a building, structure, object, site, or district, usually more than 50 years of age
- Tribal Resource
 - A Tribal resource may include cultural resources, economic interests, water interests, recreation interests, and may also include plants, animals, geological/geographic features, and more

Cultural Resources

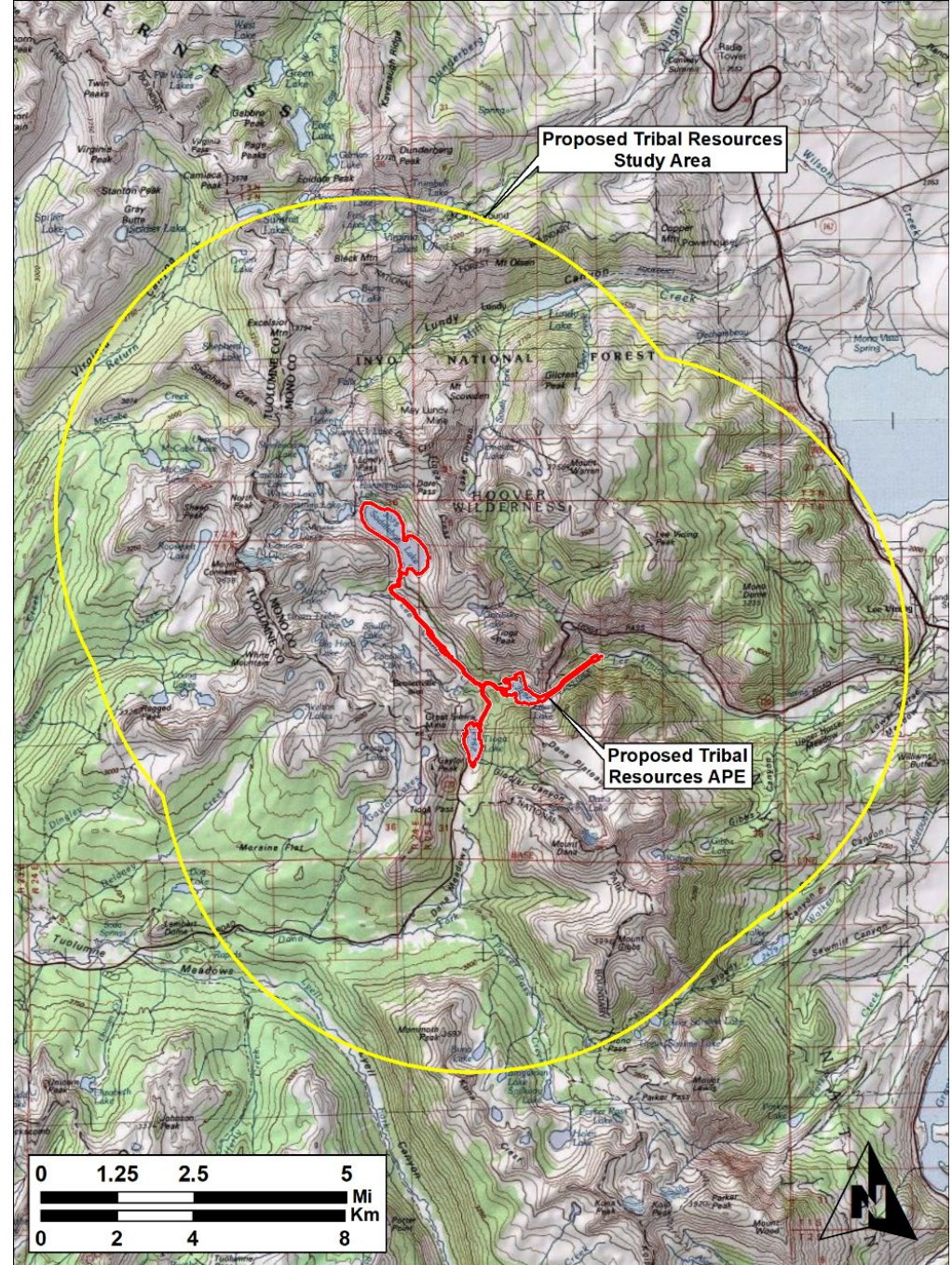
Existing Environment

- Data Sources - SCE's Subscription to California Historical Resources Information Center, USFS Data, Previous Studies, SCE Historical Documents
- 19 previous studies
- 25 previously recorded built environment resources
 - Triple Cottage National Register eligible
- 5 previously recorded archaeological resources



Tribal Resources

Proposed Study Area
(5-mi buffer) and
Area of Potential
Effect (APE; FERC
Boundary)



Tribal Resources

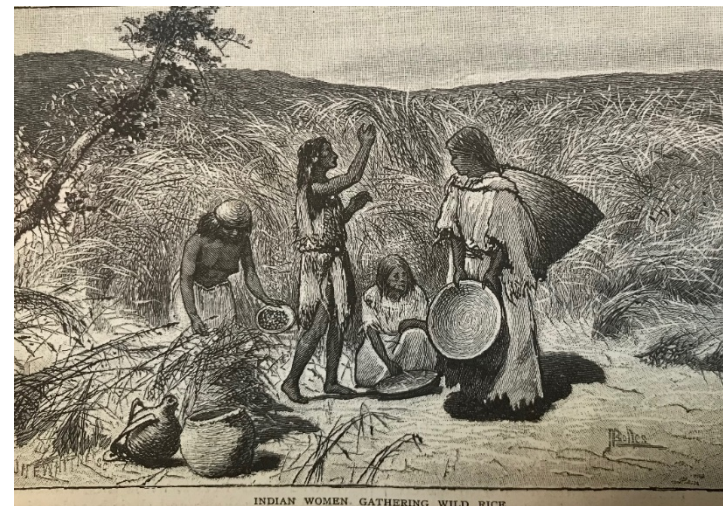
Existing Environment

- Data Sources - accessible libraries, online web-pages, and Native American Heritage Commission
- Multiple Tribal Groups have an interest in the Project (Northern Paiute, Owens Valley Paiute, Western Shoshone, Southern Miwok, Central Me-Wuk, Hungalelti Washo, Western Mono)
- Kutzadikaa Paiute/Mono Lake are the principal tribal group
- No federal trust tribal lands in Project
- No baseline ethnographic investigation of Project; ethnography from 1960s

Tribal Resources

Existing Environment

- Numerous trails in area, camps, medicine and food gathering locales
- Broad territory of tribal people to include Walker Lake and Yosemite Valley
- No interviews or meetings have yet been scheduled with Tribes



INDIAN WOMEN GATHERING WILD RICE.

Cultural and Tribal Resources

Known Data Gaps

- No recent archaeological survey of most of the project area
- No recent ethnographic study of the project area

Cultural and Tribal Resources

Preliminary Relicensing Topics

- Compliance with the National Historic Preservation Act
- Contact Tribal governments, tribal representatives, and interested parties
- Identification of location and types of cultural resources, tribal resources, and historic properties in Project area

Projectile Points



Cultural and Tribal Resources: Studies

Cultural Study

Objectives

- Identify and evaluate archaeological and built environment resources in Area of Potential Effect (APE)
- Provide compliance with National Historic Preservation Act (NHPA), National Environmental Policy Act (NEPA), and other laws
- Develop an Historic Property Management Plan (HPMP)

Rationale/Nexus

- Address Project operations and maintenance activities, vegetation management, and recreation plans that may have effects on historic properties

Tribal Study

Objectives

- Identify and evaluate tribal resources in APE
- Provide compliance with NHPA, NEPA, and other laws
- Inform the HPMP

Rationale/Nexus

- Address Project operations and maintenance activities, vegetation management, and recreation plans that may have effects on historic properties

Cultural and Tribal Resources

- Questions
- Do you have information you want to share with us?
- Proposed next TWG date: March 31

RELICENSING SCHEDULE OVERVIEW

Relicensing Process Schedule

(subject to change depending on relicensing process)

Date	Activity
August 2, 2021	SCE Files Notice of Intent/Pre-Application Document (NOI/PAD)
September 2021	FERC initiates Tribal consultation
September – October 2021	<i>If ILP:</i> FERC issues Notice of Commencement and Scoping Document 1 (SD1) and hosts scoping meeting/site visit <i>If TLP:</i> FERC approves use of TLP
October 2021	Public Meeting to discuss PAD and NOI
October/November 2021	Stakeholders file comments on NOI/PAD and request studies
November 13, 2021	SCE files proposed Study Plans
January 2022	SCE hosts Study Plan Meeting
April 2022	Revise Study Plans as appropriate
Spring/Summer 2022-2023	Conduct field studies
September 3, 2024	SCE Files Draft License Application
January 31, 2025	SCE Files Final License Application

Tentative TWG Meeting Schedule

Date		Activity
Week of March 29, 2021	Monday, Mar 29	Aquatic Resources TWG
	Wednesday AM, Mar 31	Terrestrial and Botanical TWG
	Wednesday PM, Mar 31	Cultural and Tribal TWG
	Thursday, Apr 1	Recreation and Land Use TWG

How to Stay Involved

- Check the Project website for updates/news at www.sce.com/leevining
- Sign-up to receive Project-related emails through the Contact Registration Form/Project Questionnaire on the Project website
- Participate in an ongoing TWG
- Sign up for FERC's for e-subscription (docket number "P-1388") at www.ferc.gov
- Email Carissa Shoemaker carissa.shoemaker@erm.com, Shelly Davis-King, or Audry Williams with questions



Thank you!