

Lee Vining Hydroelectric Project

FERC No. 1388

RECREATION AND LAND USE RESOURCES
Technical Working Group Meeting #1

Safety Moment



Agenda

- Welcome & Introductions
 - Safety Moment
 - Introductions
 - Meeting guidelines
 - Review of November TWG notes
- TWG Purpose & Objectives
 - Review materials
 - FERC NEPA process overview
 - FERC's 7 Study Plan Criteria
- Discussion of Resource Management Objectives/Public Interest Considerations
 - Desired future conditions
 - Data gaps
 - Potential study requests
- Schedule, Next Steps, Action Items
- Final Questions

Lee Vining Relicensing TWG Team

SCE Team

Matthew Woodhall
Project Manager

Martin Ostendorf
Senior Manager

Seth Carr
Operations Manager

Consultant Team

Finlay Anderson
Project Manager

Shannon Luoma
Deputy PM

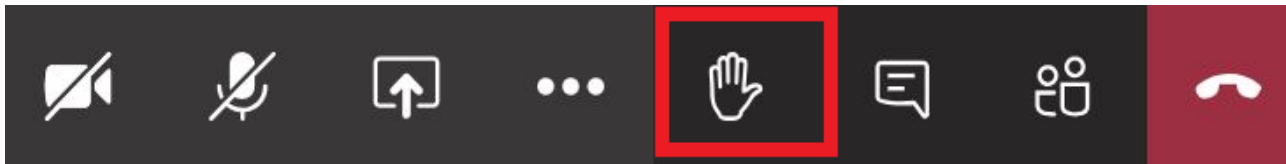
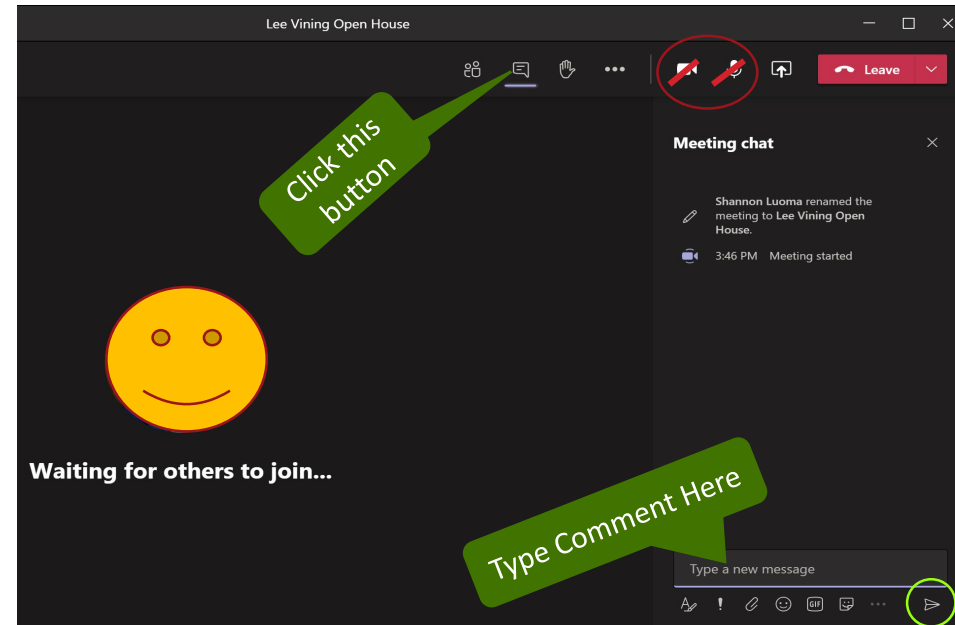
Kelly Larimer
Project Director

Carissa Shoemaker
TWG Coordinator

Matt Harper
Recreation/ Land Use
TWG Lead

Meeting Tips and Guidelines

- Please wait to be called on and then unmute your line
 - Introduce yourself (name and affiliation) prior to speaking
- Listen and respect each other
- Stay on topic
- Ask a question by typing it into the chat box during the presentation or by using the raise your hand feature



Review of November TWG notes

- Poole Powerhouse Road and Saddlebag Road are not within Project Boundary
- Stream gage below Poole is within Project Boundary
- Land at Poole owned by National Forest System
- Opportunities to install more restrooms and provide assistance to INF to sign/manage

TWG Materials Provided via Email and Website

- Email
 - Agenda and Homework
 - FERC Scoping Overview Memo
 - Draft Nov 2020 Initial TWG Meeting Notes
- Website
 - TWG Charter Document
 - Select parts of PAD
 - PAD References List
 - Comprehensive Management Plans List
 - FERC NEPA overview
 - FERC Study Criteria

FERC RELICENSING PROCESS

Goal of Study Plans

- Issuance of a new license is a major “federal action”
- Therefore, FERC will need to go through a NEPA process to make sure that the action is:
 - Consistent with federal laws
 - Federal Power Act
 - National Historic Preservation Act
 - Clean Water Act
 - Endangered Species Act
 - Consistent with current resource management objectives
 - In the public interest

FERC has criteria for study identification

1. Goals and Objectives
2. Relevant Resource Management Goals and Public Interest considerations
3. Existing Information
4. Project Nexus
5. Proposed Methodology
6. Level of effort and Cost



**A GUIDE TO UNDERSTANDING AND
APPLYING THE INTEGRATED
LICENSING PROCESS STUDY CRITERIA**

*Federal Energy Regulatory Commission
Office of Energy Projects*

March 2012

2021 FERC Critical Dates for TWGs

- Jan-July 2021: TWG meetings to develop outline of Study Plans and objectives
- August 2021: SCE Files the PAD
 - After the PAD is filed, TWGs will have approximately 4-5 months to wrap up proposed Study Plans
- Sept/Oct 2021: Study Plan Development
 - *If ILP*: FERC will issue Scoping Document(s) that outlines NEPA requirements
- Oct/Nov 2021: Stakeholders file comments on Study Plans
 - TWGs review received comments and assess whether input needs to be added into Study Plans
- January 2022: SCE Hosts Study Plan meeting
 - TWG members encouraged to attend/participate

Questions?

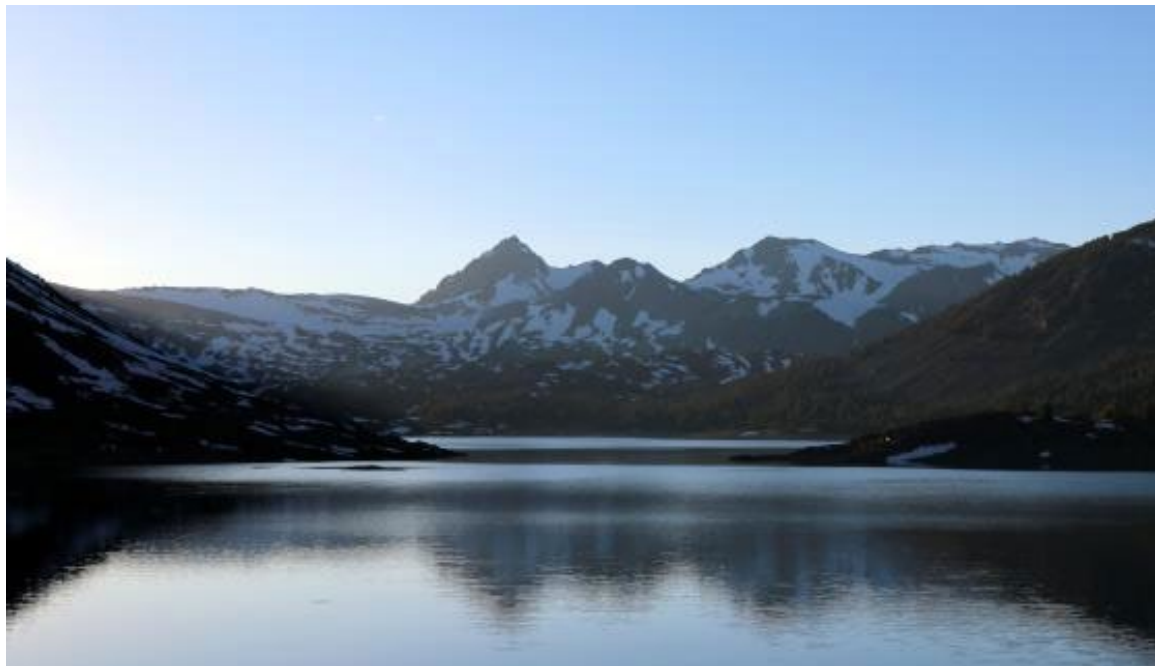
Stakeholder “Homework”: Discussion of Resource Management Objectives

- Desired Future Conditions
- Data Gaps
- Potential Study Requests
 - Study Area
 - Project Nexus
 - Goals and Objectives

Due date for Study Plan Requests - February 5, 2021

Recreation and Land Management Resources

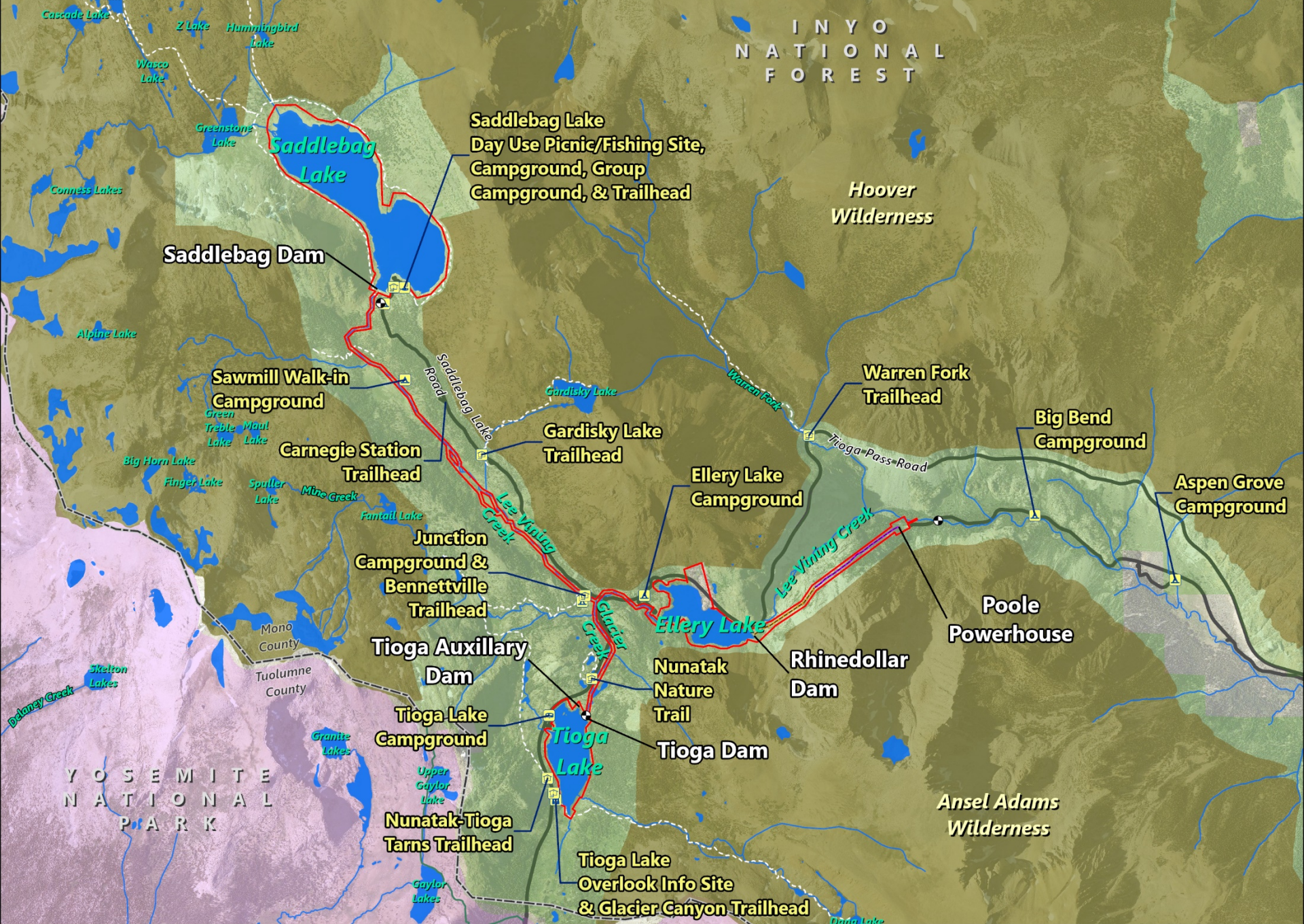
- ▶ TWG Lead
 - ▶ Matthew Harper, Kleinschmidt



Recreation and Land Use Topics

- Recreation
- Land Management
- FERC Project boundary

INYO
NATIONAL
FOREST



Saddlebag Dam

Saddlebag Lake
Day Use Picnic/Fishing Site,
Campground, Group
Campground, & Trailhead

*Hoover
Wilderness*

**Sawmill Walk-in
Campground**

**Carnegie Station
Trailhead**

**Gardisky Lake
Trailhead**

**Warren Fork
Trailhead**

**Big Bend
Campground**

**Aspen Grove
Campground**

**Ellery Lake
Campground**

**Junction
Campground &
Bennettville
Trailhead**

**Tioga Auxiliary
Dam**

**Poole
Powerhouse**

**Nunatak
Nature
Trail**

**Rhinedollar
Dam**

**Tioga Lake
Campground**

Tioga Dam

YOSEMITE
NATIONAL
PARK

**Nunatak-Tioga
Tarns Trailhead**

**Tioga Lake
Overlook Info Site
& Glacier Canyon Trailhead**

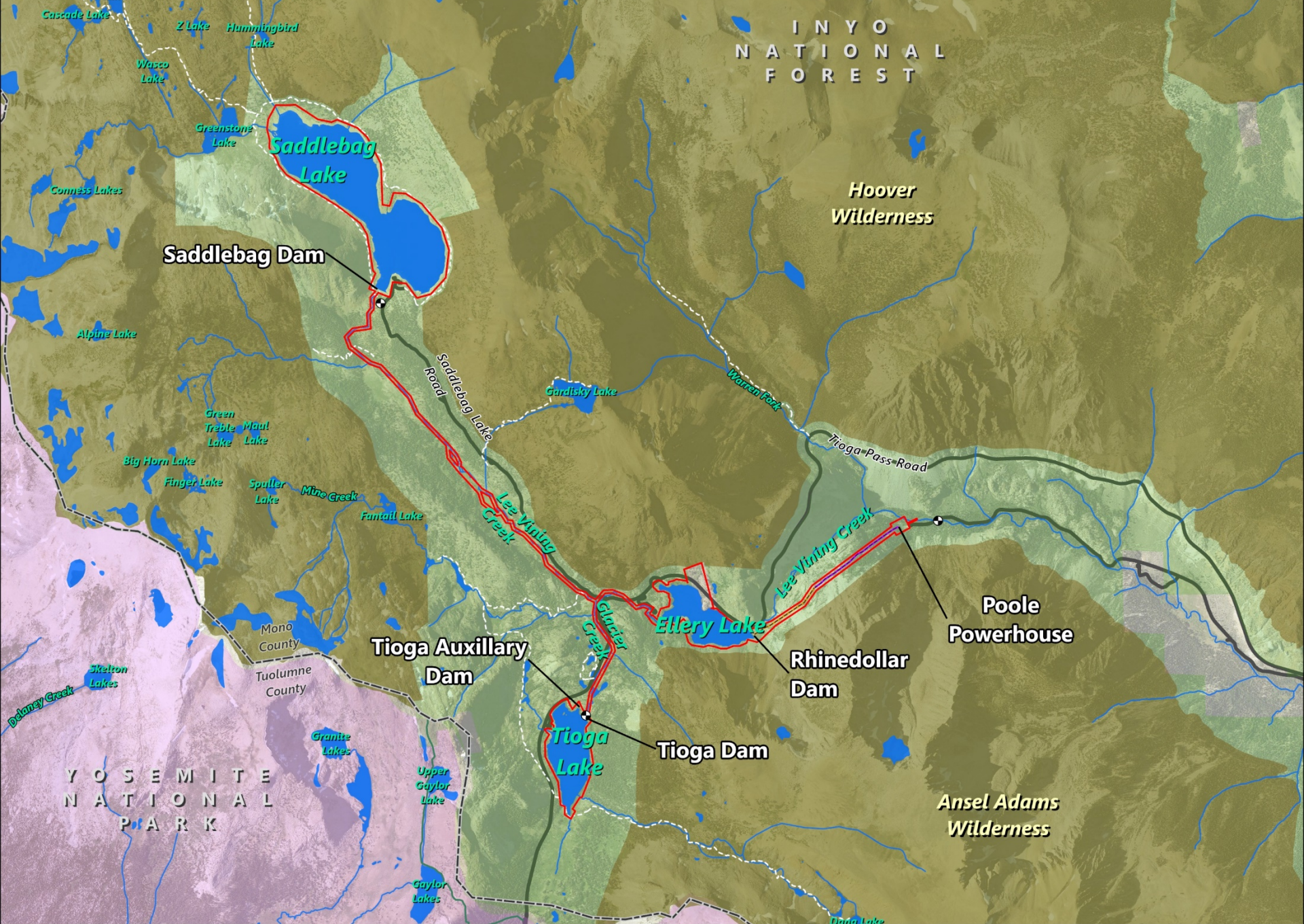
*Ansel Adams
Wilderness*

Recreational Resources

Existing Environment

- No recreation sites required of current license, though many Inyo NF recreation sites in the vicinity.
 - Inyo National Forest operates and maintains 10 conventional camping, 1 group camping, and 2 recreational vehicle camping areas; 1 day use
- Inside FERC boundary:
 - Hiking trails and rec sites crossing or adjacent to Project boundary
 - Minimum flows, stable lake levels
 - CDFW fish stocking program at all three reservoirs and Lee Vining Creek (Funding requirement at Ellery as part of current license)





INYO
NATIONAL
FOREST

Hoover
Wilderness

Saddlebag Dam

Saddlebag
Lake

Pool
Powerhouse

Tioga Auxillary
Dam

Tioga Dam

Rhinedollar
Dam

Elery
Lake

YOSEMITE
NATIONAL
PARK

Ansel Adams
Wilderness

Recreation and Land Management Resources

Known Data Gaps

- Inyo National Forest Wilderness Permit Use and Day Use Estimates

Recreation and Land Management Resources

Preliminary Relicensing Topics



- Assess the Project area's recreation opportunities, use, and needs
- Inventory condition of recreation facilities with a nexus to the Project and assess future needs
- Learn from the community what recreation attributes of the Project are most valued
- Identification of lands needed for inclusion in a future project boundary, including project roads, trails, spoil sites, recreation sites, or any other lands needed for Project operations

Recreation and Land Use Resources

- Questions
- Do you have information you want to share with us?
- Proposed next TWG dates:
 - TWG 2: February 25
 - TWG 3: April 1

Stakeholder “Homework”: Discussion of Resource Management Objectives

- Desired Future Conditions
- Data Gaps
- Potential Study Requests
 - Study Area
 - Project Nexus
 - Goals and Objectives

Due date for Study Plan Requests - February 5, 2021

RELICENSING SCHEDULE OVERVIEW

Relicensing Process Schedule

(subject to change depending on relicensing process)

Date	Activity
August 2, 2021	SCE Files Notice of Intent/Pre-Application Document (NOI/PAD)
September 2021	FERC initiates Tribal consultation
September – October 2021	<i>If ILP:</i> FERC issues Notice of Commencement and Scoping Document 1 (SD1) and hosts scoping meeting/site visit <i>If TLP:</i> FERC approves use of TLP
October 2021	Public Meeting to discuss PAD and NOI
October/November 2021	Stakeholders file comments on NOI/PAD and request studies
November 13, 2021	SCE files proposed Study Plans
January 2022	SCE hosts Study Plan Meeting
April 2022	Revise Study Plans as appropriate
Spring/Summer 2022-2023	Conduct field studies
September 3, 2024	SCE Files Draft License Application
January 31, 2025	SCE Files Final License Application

Tentative TWG 2 & 3 Meeting Schedule

Date		Activity
Week of February 22, 2021	Monday, Feb 22	Water Resources TWG 2
	Wednesday AM, Feb 24	Terrestrial and Botanical TWG 2
	Wednesday PM, Feb 24	Cultural and Tribal TWG 2
	Thursday, Feb 25	Recreation and Land Use TWG 2
Week of March 29, 2021	Monday, Mar 29	Water Resources TWG 3
	Wednesday AM, Mar 31	Terrestrial and Botanical TWG 3
	Wednesday PM, Mar 31	Cultural and Tribal TWG 3
	Thursday, Apr 1	Recreation and Land Use TWG 3

Due date for Study Plan Requests - February 5, 2021

How to Stay Involved

- Check the Project website for updates/news at www.sce.com/leevining
- Sign-up to receive Project-related emails through the Contact Registration Form/Project Questionnaire on the Project website
- Participate in an ongoing TWG
- Sign up for FERC's for e-subscription (docket number "P-1388") at www.ferc.gov
- Email Carissa Shoemaker with questions carissa.shoemaker@erm.com



Thank you!