

LEGEND

- Sensitive Species (AMEC)
- Historical Occurrence (Dudek, SCE)
- USFS Wildlife Points
- USFS Sensitive Plants
- CNDDB Points (2007)
- Species Patch (AMEC)
- CNDDB Polygons (2007) (Specific Areas)
- USFWS Species Records (2007)

Mile Post

- end point
- mile
- tenth
- Segment 11
- NHD Streams

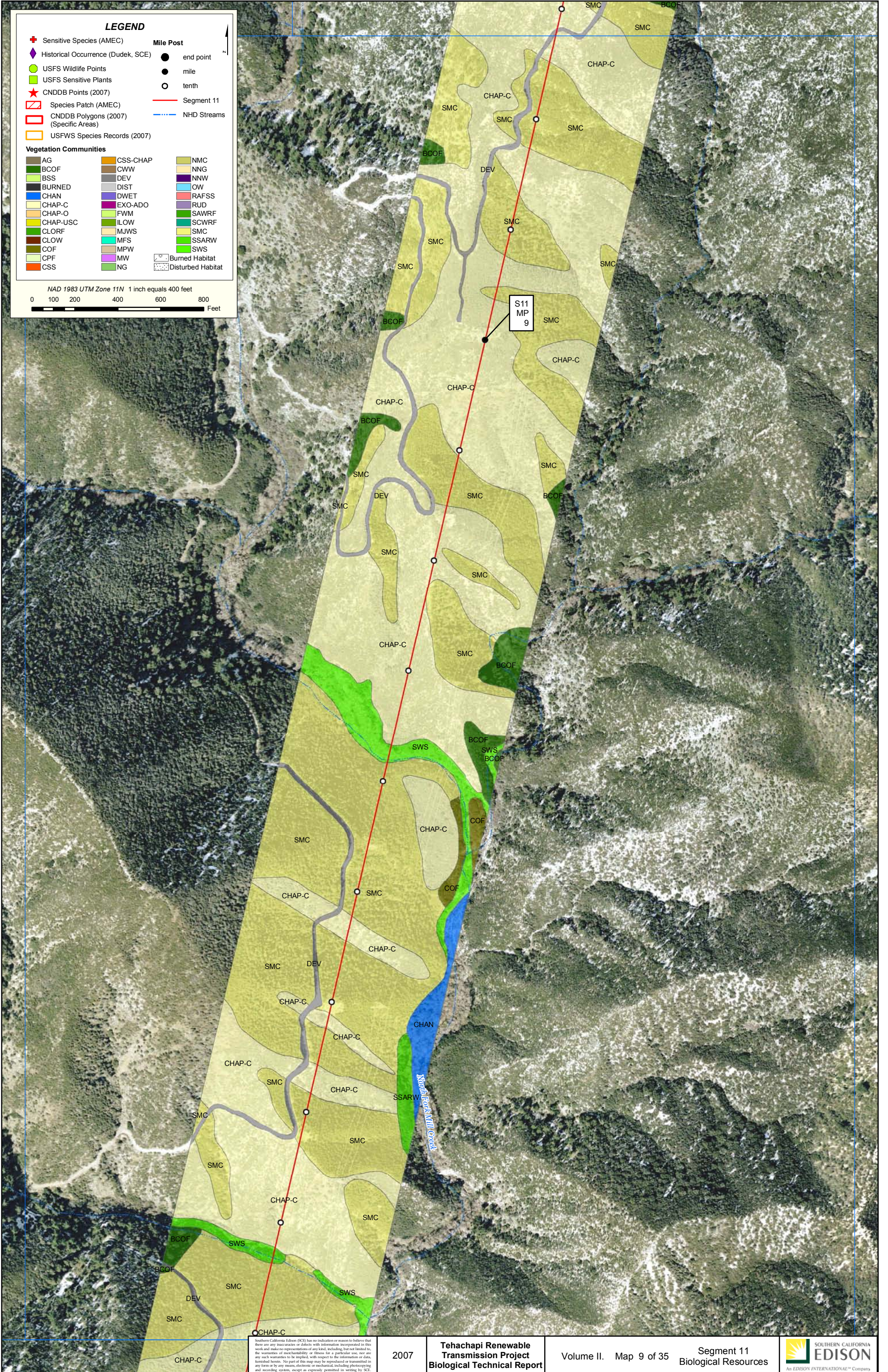
Vegetation Communities

AG	CSS-CHAP	NMC
BCOF	CWW	NNG
BSS	DEV	NNW
BURNED	DIST	OW
CHAN	DWET	RAFSS
CHAP-C	EXO-ADO	RUD
CHAP-O	FWM	SAWRF
CHAP-USC	ILOW	SCWRF
CLORF	MJWS	SMC
CLOW	MFS	SSARW
COF	MPW	SWS
CPF	MW	
CSS	NG	

Burned Habitat
 Disturbed Habitat

NAD 1983 UTM Zone 11N 1 inch equals 400 feet

0 100 200 400 600 800 Feet



Southern California Edison (SCE) has no indication or reason to believe that there are any inaccuracies or defects with information incorporated in this work and make no representations of any kind, including, but not limited to, the warranties of merchantability or fitness for a particular use, nor any other such warranties to be implied, with respect to the information or data, furnished herein. No part of this map may be reproduced or transmitted in any form or by any means, electronic or mechanical, including photocopying and recording systems, except as expressly permitted in writing by SCE.

2007

Tehachapi Renewable Transmission Project
Biological Technical Report

Volume II. Map 9 of 35

Segment 11
 Biological Resources

