



Wayne P. Allen
Principal Manager
Regulatory Support Services

Filed Electronically

October 31, 2023

Ms. Kimberly D. Bose
Secretary
Federal Energy Regulatory Commission
888 First Street, NE
Washington, DC 20426

Subject: Kern River No. 3 Hydroelectric Project, FERC Project No. 2290-122; Initial Study Report Meeting Summary

Dear Secretary Bose:

Southern California Edison (SCE) is filing this Initial Study Report (ISR) Meeting Summary for the Kern River No. 3 (KR3) Hydroelectric Project (Project) with the Federal Energy Regulatory Commission (FERC or Commission) and stakeholders pursuant to the Code of Federal Regulations, Title 18, Section 5.15(c)(3) (18 CFR § 5.15(c)(3))

SCE filed the ISR on October 10, 2023, which described the overall progress in implementing the 20 FERC-approved Study Plans, summarized the available study results, and described any variances and modifications from the approved plans. Subsequent to filing of the ISR, SCE held an ISR meeting with FERC staff and other Stakeholders on October 17, 2023. The meeting was held in-person in Kernville, California, with a call-in option for remote participation.

MEETING OVERVIEW

SCE provided an overview of the relicensing progress and timeline of major Project filings that have occurred and will occur through 2024. SCE then described the status of implementing the 20 FERC-approved Study Plans before opening the meeting to FERC and Stakeholder questions or comments. SCE also described variances that have occurred during study implementation and any proposed study modifications. SCE concluded the meeting with a summary of next steps and noted key filing dates for Stakeholders.

Attachment A includes the list of meeting attendees and the meeting summary, as well as an overview of questions/comments received by Stakeholders and SCE's responses and/or follow-up actions. Attachment B includes the ISR meeting PowerPoint presentation.

NEXT STEPS

A copy of this cover letter will be distributed via email to Stakeholders identified in Attachment C, with a link to the filing. Additionally, the ISR Meeting Summary will be posted on SCE's public relicensing website at www.sce.com/kr3.

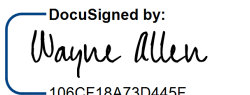
Secretary Bose
Page 2 of 2
October 31, 2023

Any participant or Commission staff may file comments on the ISR Meeting Summary by December 11, 2023, in accordance with FERC's Revised Process Plan and Schedule issued October 12, 2022.¹ The filing may also include any proposed modifications to ongoing studies or proposed new studies, accompanied by a showing of good cause why the proposal should be approved, in accordance with 18 CFR § 5.15(d) and (e).

SCE will continue with data collection for a second study season (2023–2024) for ongoing/outstanding study elements and per FERC's resolution of any disagreements, if necessary (refer to Attachment B and Attachment C of the October 10, 2023, ISR filing for a summary of ongoing/outstanding study elements and revised schedule, respectively). The results of the second study season will be provided in the Updated Study Report filed with FERC by October 11, 2024.

SCE looks forward to working with FERC and Stakeholders as the relicensing of the Project proceeds. If you have any questions regarding this filing, please contact David Moore, SCE Project Manager via email at david.moore@sce.com.

Sincerely,

DocuSigned by:

106CF18A73D445F...
Wayne P. Allen
Principal Manager

Enclosures:

Attachment A: KR3 Initial Study Report Meeting Summary
Attachment B: PowerPoint Presentation
Attachment C: Distribution List

¹ FERC Revised Process Plan and Schedule, FERC Accession No. 20221012-3025. Issued October 12, 2022. [eLibrary | File List \(ferc.gov\)](#)

ATTACHMENT A KR3 INITIAL STUDY REPORT MEETING SUMMARY

**Southern California Edison
Kern River No. 3 (KR3) Hydroelectric Project (P-2290)
Initial Study Report Meeting Summary**

Meeting Date: Tuesday, October 17, 2023
Meeting Location: Kernville Chamber of Commerce
 11447 Kernville Road
 Kernville, CA 93238
Online: [Team Link](#)
 (213) 279-1475 / Conference ID: 263 283 953#

1.0 MEETING PURPOSE

The purpose of the ISR meeting was to discuss Southern California Edison’s (SCE) progress in implementing the Federal Energy Regulatory Commission (FERC) approved studies and to review Study Plan variances and proposed modifications in support of the ongoing relicensing of the KR3 Hydroelectric Project (Project).

The meeting agenda and materials¹ were available on the Kern River No. 3 (KR3) website (www.sce.com/kr3), limited hard copies were distributed for those in-person.

Meeting Participants

Name	Organization	Participation (In-person/Online)
David Moore	SCE	In-person
Martin Ostendorf	SCE	In-person
Dan Keverline	SCE	In-person
Jillian Roach	Environmental Resource Management (ERM)	In-person
Samantha Bennett	ERM	In-person
Angela Whelpley	Kleinschmidt Associates (KA), Subject Matter Expert (SME)	In-person
Brad Blood	Psomas, SME	In-person
Brett Duxbury	Kern River Boaters (KRB)	In-person
Chuck Richards	Public Stakeholder	In-person
Dale Murphy	KRB	In-person

¹ The meeting agenda, PowerPoint presentation, and Attachment B: Technical Study Plan Implementation Summary (from the ISR filing), were available on the public website.

Name	Organization	Participation (In-person/Online)
Denver-Rose Harman	McCormick Biological Inc. (MBI)	In-person
Eric Giddens	Private Boater	In-person
Evan Moore	Sierra South	In-person
Gary Ananian	Kern River Conservancy	In-person
Jeff Venturino	American Whitewater	In-person
Jim Aherns	Kern River Fly Fishers	In-person
John Gangemi	River Sciences Institute, SME	In-person
John Warnshuis	KRB	In-person
Jonathan Cizmar	Sierra South	In-person
Marie Rainwater	Rainwater Associates	In-person
Neil Nikirk	Private Boater, KRB	In-person
Randi McCormick	MBI, SME	In-person
Russ Liebig	Stillwater Sciences, SME	In-person
Abimael Leon	California Department of Fish and Wildlife	Online
Alexander Welch	MBI, SME	Online
Anatoly	Public Stakeholder	Online
Anthea Raymond	LA County Beach Commission	Online
Audry Williams	SCE, SME	Online
Carl Mannheim	KA, SME	Online
Charles Sensiba	Troutman Pepper	Online
Colleen Kamoroff	Stillwater Sciences, SME	Online
Dawn Alvarez	U.S. Forest Service	Online
Elizabeth Jens	Public Stakeholder	Online
Eugene Hacker	Public Stakeholder	Online
Frank Winchell	Federal Energy Regulatory Commission (FERC)	Online
Garrett Long	California State Water Board	Online
Holly Burger	Stillwater Sciences, SME	Online
Ian Pryor	Stillwater Sciences, SME	Online
Jacquelyn Weddle	MBI, SME	Online
Jerry Squirrel	Public Stakeholder	Online
Jessica Fefer	FERC	Online
Jessica Rankin	SCE	Online

Name	Organization	Participation (In-person/Online)
Jose-Luis Pino	FERC	Online
Khatoon Melick	FERC	Online
KM	Public Stakeholder	Online
L.W. Swanson	Public Stakeholder	Online
Lawrence Wade	Public Stakeholder	Online
Lilian Jonas	National Park Service	Online
Lindsay Messett	Psomas, SME	Online
Liz Duxbury	KRB	Online
Marc Schiffhauer	MBI, SME	Online
Megan McCormick	MBI, SME	Online
Melissa Lane	Stillwater Sciences, SME	Online
Poppy Milliken	ERM, SME	Online
Quinn Emmering	FERC	Online
Scott Toland	Public Stakeholder	Online
Shannon Archuleta	FERC	Online

2.0 MEETING SUMMARY

This meeting summary is not intended to be a transcript of the ISR meeting, and thus, this summary is not intended to present every comment or question that was said during the meeting. The following provides a summary of the information presented along with some general discussions and questions that occurred. Action items identified during the meeting and follow-up responses by SCE are summarized at the end. The ISR Meeting PowerPoint presentation is provided in Attachment B.

2.1. INTRODUCTION, SCHEDULE, AND PROJECT OVERVIEW

David Moore (SCE Project Manager) welcomed the group and provided a brief safety moment. Marie Rainwater (Rainwater Associates) provided meeting facilitation during the ISR meeting and gave an overview of the meeting agenda, meeting purpose, and meeting guidelines. SCE encouraged any Stakeholders to file comments directly with FERC and noted FERC’s criteria for requesting modifications to an existing study (18 CFR § 5.15(d)) or a new study request (18 CFR § 5.15(e)).

SCE and their Consultant Team conducted brief introductions, followed by an acknowledgement of any FERC, agency, or Tribal participants (in the room or on the phone).

Jillian Roach (ERM Project Manager) presented an overview of the KR3 Project and highlighted key filing dates that have occurred since the start of the relicensing process.

Upcoming key dates through 2024 were also noted as part of the ongoing Integrated Licensing Process Project schedule. December 11, 2023, was emphasized as the due date for FERC and Stakeholders to submit comments on the ISR, this ISR meeting summary, or to file a study modification or request a new study.

2.2. STATUS OF TECHNICAL STUDY PLAN IMPLEMENTATION

For each technical study, an overview of the study elements completed, ongoing/outstanding study elements, study plan variances, modifications to an ongoing study and key study results were presented. Comments, questions, and general discussion are organized by individual technical study and summarized in the bullets below.

CULTURAL/TRIBAL RESOURCES

Audry Williams (SCE, Archaeologist) presented the Cultural Resources Assessment (CUL-1) and the Tribal Resources Assessment (TRI-1) studies.

- *CUL-1 Cultural Resources Assessment*
 - Question (Q) (Frank Winchell, FERC): When will the Cultural Resources Assessment Report be available to the public?
 - Response (R) (Audry Williams): The report will be available with the Draft License Application (DLA).
 - Q (Gary Ananian, Kern River Conservancy): Were local Tribes consulted with during the study?
 - R (Audry Williams): Yes, the Tübatulabal and Kawaiisu Tribes were consulted and participated in the field surveys with the archaeologists.

WATER RESOURCES

Russ Liebig (Stillwater Sciences, Aquatic Biologist) presented the Water Quality (WR-1) and Hydrology (WR-2) studies.

- *WR-1 Water Quality*
 - Q (Shannon Archuleta, FERC): Why were there were variances for the fecal coliform sampling?
 - R (Russ Liebig): The 2023 sampling only occurred in late August / Labor Day Weekend 2023. Due to the high-water year, the summer sampling over July 4 was postponed. This sampling is scheduled to occur in July 2024.
 - Q (Shannon Archuleta): What will be done to ensure 12-months of data is collected?

- R (Russ Liebig): Due to the data logger issues, as described in the ISR, the intention is to collect additional data from fall 2023 through summer 2024. This data will be available in the USR.
- Q (Eric Giddens, private boater, and Brett Duxbury, KRB): Inquired about bacteria and dissolved oxygen (DO) sampling locations.
 - R (Russ Liebig): There were five sites selected for bacterial sampling, one of which is located upstream of Fairview Dam, two in the bypass reach, and samples one in each of Salmon and Corral Creek upstream of the confluence with the NFKR. The sites are described in the ISR Technical Memorandum (TM). DO and temperature loggers were placed at 10 locations, including upstream of Fairview Dam in the North Fork Kern River (NFKR) and upstream and downstream of Salmon Creek and Corral Creek diversions.
- Comment (C) (Brett Duxbury): Provided reference to a water quality study proposed to the Kern River Trust Fund that was not awarded; therefore, requested that SCE add conductivity to their study.
 - R (Russ Liebig): There is existing data for turbidity, nitrogen, and phosphorous in the Project area. Conductivity is not affected by the Project and was therefore not included in the study; however, in situ conductivity measurements were collected during some surveys (e.g., fish sampling).
- *WR-2 Hydrology*
 - Jose-Luis Pino (KRB): Why was the mean presented rather than the median?
 - Russ Liebig: Both mean and median flows were reviewed and reported in the TM. For the presentation today, the slides show a few examples of the results, including both mean and median monthly flow.
 - Q (Liz Duxbury, KRB): One of the steps in the California Environmental Flows Framework (CEFF) includes making an alternation assessment from the observed data. Will the data be reviewed with the observed dataset?
 - R (Melissa Lane, Stillwater Sciences): That specific question is regarding Section C of the CEFF. The approved study plan only required the CEFF Section A analysis.
 - Q (Liz Duxbury): The flow duration curves have a log scale on them making it hard to determine the incoming flow. Are there any plans to create a linear scale downstream of Fairview Dam?
 - R (Russ Liebig): SCE will take that comment into consideration.

- Q (Jeff Venturino, American Whitewater): Is there a key for all tables and pictures within the document?
 - R (Russ Liebig): There are keys above the figures and tables in the TM.
- Q (Jeff Venturino): When will the 2022 and 2023 hydrology data be available to the public?
 - R (Russ Liebig): SCE is planning to post the data in January 2024.
- Q (Brett Duxbury): The study references the 2003 California Department of Fish and Wildlife (CDFW) Trout Management Plan. Will the 2022 Trout Management Plan be reviewed and referenced as well?
 - R (Russ Liebig): Yes, SCE will review the 2022 Trout Management Plan, and update the CEFF goals and references in an updated TM, as appropriate.
- Q (Brett Duxbury): Regarding the technical data storage issue that led to losing 8 years of storage data. Will that data be available to the public?
 - R (Martin Ostendorf, SCE): The data are not missing. Earlier data (1996–2004) were stored in one format, whereas more recent data (2005–2022) were stored in another. A description of this is included in the WR-2 TM and SCE can provide more clarification on this topic if needed.

BIOLOGICAL AND BOTANICAL RESOURCES

Russ Liebig (Stillwater Sciences) presented Stream Habitat (BIO-6), Foothill Yellow-legged Frog (BIO-1), Benthic Macroinvertebrate Survey (BIO-4) studies. Brad Blood (Psomas, Terrestrial Biologist) presented Special-Status Salamanders (BIO-2), Western Pond Turtle (BIO-5), and General Wildlife Resources (BIO-3). Randi McCormick (McCormick Biological, Inc, Botanist) presented the General Botanical Resources (BOT-1) study.

- *Fish Population Survey*

- Q (Gary Ananian): How was the fish population survey performed and when was it completed?
 - R (Russ Liebig): The survey was completed with backpack electrofishing and snorkeling. The survey started on October 5th, 2023 and ended on October 7th, 2023. The study report will be available Q1 of 2024.
 - R (Jillian Roach): The fish population study survey is an ongoing study associated with the current FERC license. Refer to the Resources Section on the Projects' public website for past study reports.

- Q (Jim Aherns): During the fish population survey what was the proportion of planted fish compared to natural spawn fish?
 - Russ Liebig: As the data were just collected last week, once the data have been compiled and reviewed, SCE will provide available information regarding planted fish compared to natural spawn fish data. Following the meeting, SCE confirmed that all trout observed in 2023 appeared to be natural spawned.
- Q (Quinn Emmering, FERC): Is there available entrainment data?
 - R (Russ Liebig): The flowline contains fish screens at the head of the flowline. There were two prior entrainment studies completed at the sandbox with somewhat inconclusive results. The studies found that the screens preclude larger fish from entering the flowline but were inconclusive on juvenile fish. If fish were to make it through the fish screens, there were no features identified that would result in fish mortality along the flowline, and Francis turbines (used at the powerhouse) are generally fish-friendly; however, there could be some mortality associated with the head differential at the penstocks.
- *BIO-4 Benthic Macroinvertebrate*
 - Q (Gary Ananian): Is Benthic Macroinvertebrate (BMI) a sufficient method to survey?
 - R (Russ Liebig): BMI provides data on water quality and impairment; the current methods (SWAMP) do not provide direct information on fish food. BMI can provide qualitative data related to fish food.
- *BIO-1 Foothill Yellow-legged Frog*
 - Q (Quinn Emmering): Inquired about the survey timing and if frogs would have bred this year due to the high flows.
 - R (Colleen Kamoroff, Stillwater Sciences): The U.S. Forest Service (USFS) was consulted and participated in the site selection that occurred in 2022. The hydrograph was taken into account when preparing for field surveys, which resulted in a later survey than normal. Given the delay in survey timing, the U.S. Fish and Wildlife was consulted regarding the timing of the summer 2023 surveys and was invited to participate in the 2023 surveys. During the June 2023 surveys, Cannell Creek and Corral Creek were surveyed; however, Salmon Creek was not surveyed due to the high flows. While there is a possibility that the frogs did not breed this year, they would still be observable, based on the timing of the surveys. Additional VES surveys are planned in the mainstem of the Kern River and Salmon Creek in 2024.

LAND RESOURCES AND PROJECT OPERATIONS

Russ Liebig (Stillwater Sciences) presented the Road Condition Assessment (LAND-1) and Erosion and Sedimentation (GEO-1). Jillian Roach (ERM) presented the Water Conveyance Assessment (OPS-1) and Environmental Justice (EJ-1) studies.

- *OPS-1 Water Conveyance Assessment:*
 - Q (Jeff Venturino, American Whitewater; Neil Nikirk, private boater/KRB; and Lawrence Wade KRB): Inquired when the results of the Phase 2 assessment will be completed.
 - R (David Moore): SCE understands that information from this study may be of interest for other studies and is planning to have the study completed in Q1 2024.
 - Q (Brett Duxbury KRB): Can we request the CEII document from FERC, would SCE pose any objections?
 - R (David Moore): SCE would not object to any CEII request.
 - Q (Eugene Hacker, private boater): Will there be an independent review of the OPS-1 study results?
 - R (Martin Ostendorf): SCE does not see the need for independent review and is utilizing industry experts to provide credible study results. If an additional study or review element is required, Stakeholders are encouraged to provide a formal comment to FERC, and SCE will follow FERC's recommendation.
 - Q (Lawrence Wade, KRB): Is the Kern hatchery intake pipe part of the OPS-1 Study?
 - R (David Moore): No, the CDFW Kern hatchery intake pipe is not part of the study. The intake is located downstream of the KR3 Powerhouse, and while it is within the FERC Project Boundary, it is not part of the hydropower project.
 - Q (Lawrence Wade): Is the recreational compatibility data that are influenced by OPS-1 study, going to be available to the public?
 - R (Jillian Roach): The FERC website includes the study plan for the OPS-1 and Phase 2 study approach. The range of flows evaluated in this study is from the upper capacity (approximately 600 cfs) down to 0 flow.
 - Q to CDFW (Jim Aherns): Is the hatchery ever going to be open?

- R (Abimael Leon, CDFW): The hatchery is currently under repair and will be restored. CDFW will provide an update as more information becomes available.

RECREATION RESOURCES

John Gangemi (River Sciences Institute, Recreation/Whitewater Boating) presented the Whitewater Boating (REC-1), Aesthetics Flows Study (AES-1), and the Enjoyable Angling Flows (ANG-1) studies. Angela Whelpley (Kleinschmidt Associates, Recreation Resources) presented the Recreation Facilities Use Assessment (REC-2) and Recreation Facilities Condition Assessment (REC-3) studies.

- *REC-1 Whitewater Boating*

- Q (Elizabeth Jens, Public Stakeholder): What constitutes a recreational flow? Why is there no study conducted on the water for lower flows (below 700 cfs)?
 - R (John Gangemi): Recreational flows at or below 700 are being tracked by the survey results from the level 3 multiple flow study questionnaire.
- Q (Elizabeth Jens): Why is there no dedicated study?
 - R (John Gangemi): Due to the multiple segments within the bypass reach, there are limitations on how data are collected for the Level 3 study. If there are data gaps identified in the Level 1 and Level 3 data analysis, there will be an opportunity to target the data gaps with opportunistic enhanced flows using a combination of natural inflow and Project diversion flows. A challenge with a controlled flow study is the ability to draw a broader pool of boaters due to the short timeframe to take advantage of a range of opportunistic flows across multiple reaches.
- Q (Liz Duxbury): Inquired about the Level 3 Intensive Study and the need for a controlled flow study.
 - R (John Gangemi): There seems to be confusion between some terminology. To clarify, a Level 3 study can include several approaches for intensive flow studies. For this Project, there are multiple river segments which limits on how you can collect the data. The REC-1 WW boating study plan uses both the multiple flow and comparative flow approaches for intensive study. If there are data gaps identified in the Level 1 and Level 3 data analysis, there will be an opportunity to target the data gaps with opportunistic enhanced flows using a combination of natural inflow and Project diversion. A controlled study, where a range of flows are provided over a short timeframe, is not possible for this project. The KR3 Project is not able to control the full range of boatable flows for the same team of boaters to evaluate over several day consecutive period thus not meeting the experimental design that is key to a controlled flow approach. This study, as proposed in the Study Plan, was designed to collect data from a

broad range of boater skill levels, watercraft types, and geographic areas for each of the river segments.

- Q (Liz Duxbury KRB): The REC-1 identifies the possibility of a flow enhancement, but argues it is also impossible to do a dedicated study. The in-flows (below 800) can target flows between 200-500 cfs. The KRB study included this recommendation.
 - R (John Gangemi): If there is a need to target specific flow ranges based on a data gap, it is possible to obtain that data.
- Q (Jose-Luis Pino, KRB): The focus group that participated in the Level 2 Site Reconnaissance was a limited group with not a lot of diversity. Is there a way to expand that in a future focus group?
 - R (John Gangemi): Stakeholders were notified of the self-nomination form through numerous communication channels including the KR3 relicensing stakeholder list, American Whitewater, Los Angeles Kayak Club, Kern River Boaters and Gold Country Paddlers. The self-nomination form was open from April 15- May 15. 13 individual stakeholders responded, and SCE invited all to attend; however only 10 individuals could attend on the day of the meeting.
- Q (Eugene Hacker, private boater): The self-nomination window passed without him knowing. Were the notifications present outside of the mailing list?
 - R (John Gangemi): Notifications were provided to a wide distribution to the local boating groups. A summary of the notification/outreach conducted is in the appendix to the REC-1 TM.
- Q (Eugene Hacker): The timing of the site visit should be the weekend.
 - R (John Gangemi): Tried to balance timing for both public and agency participation. SCE selected a Friday to overlap a weekend period allowing participants traveling longer distances to combine with a weekend of paddling.
- Q (Lawrence Wade, public Stakeholder): Will there be a new focus group in 2024?
 - R (John Gangemi): The focus group is associated with the comparative flow survey and will be opened up to all boaters that have expressed interest in the project.
- Q (Brett Duxbury): The ISR stated that there were no variances in the studies, is that correct?
 - R (John Gangemi): Correct.

- Q (Brett Duxbury; Liz Duxbury; and Neil Nikirk): Inquired about the use of 700 cfs and the daily timeframes presented in the TM.
 - R (John Gangemi): The information in the TM should be viewed as preliminary analysis of the boating frequency. The frequency analysis used 700 cfs because this is the current license condition for whitewater releases and reports existing condition for the Level 1. The TM includes an acknowledgement that the 700 cfs threshold for whitewater boating opportunities is disputed by the boating community. The boating frequency analysis will be repeated in the Level 3 report using updated flow preferences for each river segment for each watercraft type. There was a misunderstanding on the calculations used in Figure 5.1-9 in the TM. Boating opportunities were only counted between the hours of 8 am and 8 pm if flows were equal to or greater than 700 cfs at any point in that timeframe. Limiting the boating frequency count to daylight hours eliminated opportunities that occurred at night. Flows did not have to remain above 700 cfs for the full 12-hour period.
- Q (Jeff Venturino and Brett Duxbury): Inquired about a timeline for analysis and results in terms of future study and data collection.
 - R (John Gangemi): SCE is still in the process of reviewing the data and can't comment on a timeframe now. If Stakeholders believe an additional study or element should be required, they are encouraged to provide a formal comment to FERC.
- C (Brett Duxbury): Requests FERC to direct SCE to report on the study now. Additionally, requested (1) he would like the data now and the possibility to re-open the level 3 study; (2) SCE to analyze and report the single study flow results, before it implements the comparison flow study; (3) SCE to invite stakeholders to comment on the study prior to the launch; and (4) SCE to provide underlying data on the study plans, in spreadsheet forms with unique identifiers, with the USR.
 - R (John Gangemi): If an additional study or element is desired, we encourage you to provide a formal comment to FERC.
- Q (Jose-Luis Pino): Asked if the study or analysis of the use is being compared against other rivers in the boating community. Additionally, he believes there are missed days within the analysis.
 - R (Martin Ostendorf): The study is being implemented as outlined in the study plan. If an additional study or element is desired, SCE encourages you to provide a formal comment to FERC.
- C (Other Stakeholders): General comments were made about recreation flows and changes to the current flow release schedule.

- SCE emphasized that if there is a specific study modification or new study requested, please submit your comment to FERC for consideration.
- *REC-2 Recreation Facilities Use Assessment*
 - Q (Jeff Venturino): Inquired about the removal of the cameras and why Stakeholders were not notified; and if the variance satisfies what FERC needs.
 - R (Angela Whelpley): Data is still being collected through March 2024 but has provided an alternative methodology that accomplishes FERC's objectives.
 - R (David Moore): Provided a brief timeline of the correspondence between SCE and the USFS regarding camera installation and removal. As the recreation season was already underway, SCE did not want to lose an opportunity to collect recreation use data; therefore, SCE proceeded with revising the study method that includes a 2-hour calibration count. The USFS was consulted, as the landowner, and SCE feels that it will be sufficient with the proposed modifications.
 - R (Quinn Emmering): FERC will review SCE's modification. If a Stakeholder has a specific comment, please submit it to FERC for consideration.
 - Q (Neil Nikirk): Are all types of recreation being evaluated and where are the surveys being conducted, specifically in areas used frequently by recreational whitewater boaters outside of the campground?
 - R (Angela Whelpley): A wide variety of recreation activities and sites (including day use areas and whitewater put-in/take-out locations) are being captured as part of the study. The methodology used for REC-2 is consistent with other studies previously used for relicensing projects. Additionally, SCE is deploying various approaches to capture use, including the two-hour calibration counts at different times and days of the week in an attempt to catch boaters that may be at a site for a limited time.
 - C (Brett Duxbury): The online survey asks for the date of your visit and a response to this question is required to continue with the survey. If one didn't come to the area because of the dam, then they can't provide feedback.
 - R (Angela Whelpley): Correct, the survey is set up to ask questions only if someone visited the location.
 - Follow up comment from Brett Duxbury: Requested FERC to modify the REC-2 survey (and level 1 of AES-1 and ANG-1), to be able to answer questions if someone did not visit the site.
 - Q (Jessica Fefer, FERC): Please clarify the purpose of the additional calibrations conducted as part of the REC-2 study.

- R (Angela Whelpley): In lieu of the cameras, the purpose of the 2-hour calibration is to identify recreation use and turnover rates for each site. The data can then be cross-checked with spot counts to ensure accurate use data is being collected at each site.
- *ANG-1 Enjoyable Angling Flows*
 - Q (Brett Duxbury): ANG-1 does not discuss water year types.
 - R (Jillian Roach): The TM in the ISR is meant as a summary of the data compiled. Readers are encouraged to review the hydrology study (WR-2). Any analysis of angling and hydrology will be included as part of the DLA.
 - C (Jim Aherns): Requests FERC require the Level 2 and Level 3 study for ANG-1.

2.3. NEW STUDY REQUESTS

- C (Bret Duxbury): Described additional or new studies for FERC to consider.
 - R (Martin Ostendorf): If there are new study requests, please file your request with FERC, addressing applicable criteria, as outlined in the regulations.
 - R (Quinn Emmering): Reminded Stakeholders that any new study requests must comply with FERC's criteria (18 CFR §§ 5.9(b), 5.15(e)).

2.4. NEXT STEPS

Jillian Roach concluded the meeting with a reminder about upcoming filing dates:

- SCE will file the ISR Meeting Summary by November 1, 2023.
- Stakeholders have until December 11, 2023, *to file comments on the ISR filing, ISR Meeting Summary, or to request study modifications or a new study.*

3.0 MEETING ACTION ITEMS

- Request that SCE include filing criteria in the meeting summary.
 - SCE Response: FERC strongly encourages electronic filings. All filings must clearly identify the following on the first page: Kern River No. 3 Hydroelectric Project (P-2290-122). Refer to 18 CFR 385.2001(a)(1)(iii) and the instructions on FERC's website: <https://ferconline.ferc.gov/FERCOOnline.aspx>. Commenters can also submit brief comments up to 6,000 characters, without prior registration, using the eComment system at <https://ferconline.ferc.gov/QuickComment.aspx>. For additional assistance, please contact FERC Online Support (FERCOOnlineSupport@ferc.gov) or toll free at 1-866-208-3676.

- What is California's standard for fecal coliform sampling?
 - SCE Response: The Study Plan for WR-1 was developed based on the requirements of the Basin Plan², which requires a fecal coliform concentration geometric mean of 200/100 ml or lower based on 5 samples collected over 30-days, with no more than 10 percent of the total number of samples taken during any 30-day period exceeding 400/100 ml.
- Provide the location of Water Quality Sampling Site #5 located downstream from the KR3 Powerhouse.
 - SCE Response: Per the WR-1 TM (Table 3-1), the location of WQ-NFKR-3.0 (NFKR downstream of the KR3 Powerhouse): 35.774770, -118.435442, which is approximately 150 m downstream of the tailrace.
- Request that the contact list of all members involved with the Project be posted in the summary.
 - SCE Response: David Moore (SCE) and Quinn Emmering (FERC) contact information is provided at the end of the presentation and on the KR3 website (www.sce.com.kr3). SCE asks that all questions pertaining to SCE or for their consultants be initially directed to David Moore, SCE PM at David.moore@sce.com.

² CRWQCB (California Regional Water Quality Control Board). 2018. Water Quality Control Plan for the Tulare Lake Basin Third Edition. Revised May 2018 (with Approved Amendments). Accessed: October 2023. Available online: https://www.waterboards.ca.gov/centralvalley/water_issues/basin_plans/tularelakebp_201805.pdf

ATTACHMENT B POWERPOINT PRESENTATION

Kern No. 3 Project (FERC Project No. 2290)

Initial Study Report Meeting
October 17, 2023; 1:00 PM – 5:00 PM



Energy for What's Ahead®



Initial Study Report (ISR) Meeting Agenda

1:00 PM – 1:30 PM

Welcome, Safety, & Guidelines
Purpose and Objective of Meeting
Introductions
Project Overview & Schedule

1:30 PM – 4:50 PM

Status of Technical Study Plan Implementation

- Cultural / Tribal Resources
- Water Resources
- Biological / Botanical Resources
- Land Use / Operations
- Recreation Resources

4:50 PM – 5:00 PM

Next Steps

10/17/2023

Energy for What's Ahead® | 1

Meeting Guidelines

- Speak one at a time when prompted
- Please be concise
- Focus on issues, not personalities

Remember, this is not the only opportunity
to comment on the ISR

10/17/2023

Energy for What's Ahead® | 2

Purpose of Initial Study Report Meeting

- Filed Initial Study Report (ISR) on October 10, 2023
 - Link on SCE KR3 Relicensing Website: www.SCE.com/KR3
 - FERC e-Library
- Hold a meeting to:
 - Discuss progress of FERC approved studies
 - Review study plan variances/modifications
- File meeting summary with FERC (November 1st)
- Substantive Stakeholder comments and/or study modification request, encourage e-Filing with FERC

10/17/2023

Energy for What's Ahead® | 3

Criteria for Modification of a Study

- Per 18 CFR §5.15(d) - Criteria for modification of approved study.
 - Any proposal to modify an ongoing study pursuant to paragraphs (c)(1)–(4) of this section must be accompanied by a showing of good cause why the proposal should be approved, and must include, as appropriate to the facts of the case, a demonstration that:
 - (1) Approved studies were not conducted as provided for in the approved study plan; or
 - (2) The study was conducted under anomalous environmental conditions or that environmental conditions have changed in a material way.

Criteria for Request of a New Study

- Per 18 CFR §5.15(e) - Criteria for new study.
 - Any proposal for new information gathering or studies pursuant to paragraphs (c)(1)–(4) of this section must be accompanied by a showing of good cause why the proposal should be approved, and must include, as appropriate to the facts of the case, a statement explaining:
 - (1) Any material changes in the law or regulations applicable to the information request;
 - (2) Why the goals and objectives of any approved study could not be met with the approved study methodology;
 - (3) Why the request was not made earlier;
 - (4) Significant changes in the project proposal or that significant new information material to the study objectives has become available; and
 - (5) Why the new study request satisfies the study criteria in § 5.9(b).

Kern River No. 3 (KR3) Project Team Introductions

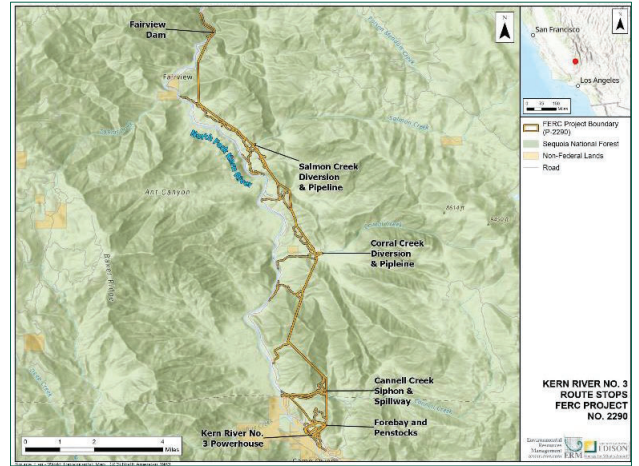
- Southern California Edison (SCE)
 - David Moore, Project Manager*
 - Martin Ostendorf, Sr Licensing Manager*
 - Dan Keverline, KR3 Area Manager*
 - Audry Williams, Cultural Resources Specialist*
 - SCE Legal Council
- Stillwater Sciences (SWS)
 - Russ Liebig, Aquatics Specialist*
 - Colleen Kamoroff, Amphibians
 - Melissa Lane, Hydrology
 - Ian Pryor, Geology and Lands
 - Annabelle Howe, Stream Habitat Typing
- Psomas
 - Brad Blood, Amphibian, Reptile and Wildlife*
 - Lindsay Messett, Amphibian, Reptile and Wildlife
 - Sarah Thomas, Amphibian, Reptile and Wildlife
- Environmental Resources Management (ERM)
 - Jillian Roach, Project Manager*
 - Samantha Bennett, Deputy PM*
 - Poppy Milliken, Env Justice
 - Luke Hegeman, Aesthetics
- Kleinschmidt Associates
 - Angela Whelpley, Recreation*
 - Kelly Larimer, Recreation
 - Carl Mannheim, PE, Project Infrastructure
- River Science Institute
 - John Gangemi, Whitewater Resources*
- McCormick Biological, Inc.
 - Randi McCormick, Botanical Resources*
 - Alexander Welch, Botanical Resources

KR3 Project Overview and Relicensing Schedule

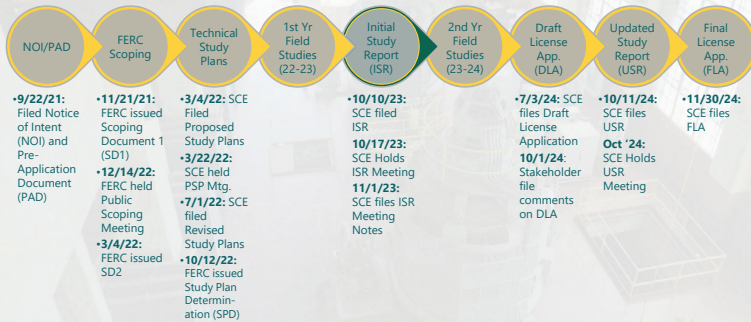
Kern River No. 3 (KR3) Project

- Current License Expires on November 30, 2026
- Dependable Generating Capacity is 36.8 MW
- Located in Tulare and Kern Counties on Sequoia National Forest (SQF) and SCE-owned lands
- Run-of-River Operations
- Key Project Elements
 - Fairview Dam and Sandbox
 - Salmon Creek Diversion
 - Corral Creek Diversion
 - Stream Gages (Kern River & Adit 6/7)
 - Cannell Creek Siphon
 - Conveyance Flowline
 - Pressure Flume, Forebay & Penstocks
 - Kern River No. 3 Powerhouse

KR3 Project Area



Kern River No. 3 Project Integrated Relicensing Process Project Timeline



FERC Relicensing Schedule (Revised 10/2022)

Due Date	Responsible Party	Milestone	FERC Regulation 18 CFRs
10/12/23 (filed 10/10/23)	SCE	File Initial Study Report	5.15(c)(1)
10/27/23 (held 10/17/23)	SCE	Initial Study Report Meeting	5.15(c)(2)
11/13/23 (due 11/1/23)	SCE	File Study Report Meeting Summary	5.15(c)(3)
12/11/23	Stakeholders	File Disagreements/Requests to Amend Study Plans*	5.15(c)(4)
1/10/24	Stakeholders	File Responses to Disagreements/Amendment Requests*	5.15(c)(5)
2/9/24	FERC	Issue Director's Determination on Disagreements/Amendments*	5.15(c)(6)
Fall 23 - Summer 24	SCE	Conduct Second Study Season	5.15(a)
7/3/24	SCE	File Draft License Application	5.16(a)-(c)
10/1/24	Stakeholders	File Comments on Draft License Application	5.16(e)
10/11/24	SCE	File Updated Study Report	5.15(f)
10/28/24	SCE	Updated Study Report Meeting	5.15(f)
11/11/24	SCE	File Study Report Meeting Summary	5.15(f)
11/30/24	SCE	File Final License Application	5.17

FERC Approved Study Plan Implementation



FERC Approved Study Plans

- FERC approved or approved with modifications 19 study plans and added 1 new study plan

Completed Study Plan Elements	Initiate Fall 2023	Ongoing/Outstanding Study Elements
<ul style="list-style-type: none"> ➤ BIO-2 Special Status Salamanders ➤ BIO-3 General Wildlife Resources ➤ BIO-5 Western Pond Turtle ➤ BIO-6 Stream Habitat ➤ BOT-1 Botanical Resources ➤ REC-3 Existing Recreation Facilities Condition Assmt. ➤ GEO-1 Erosion and Sedimentation 	<ul style="list-style-type: none"> ➤ BIO-4 Benthic Macroinvertebrate Survey 	<ul style="list-style-type: none"> ➤ WR-1 Water Quality ➤ WR-2 Hydrology ➤ BIO-1 Foothill Yellow-legged Frog ➤ REC-1 Whitewater Boating ➤ REC-2 Recreation Facilities Use Assessment ➤ AES-1 Aesthetics Flows Study ➤ ANG-1 Enjoyable Angling Flows ➤ LAND-1 Road Condition Assmt. ➤ OPS-1 Tunnel Assessment ➤ CUL-1 Cultural Resources ➤ TRI-1 Tribal Resources ➤ EJ-1 Environmental Justice

FERC Approved Study Plans

Technical Study Plan	ISR Att.	Technical Study Plan	ISR Att.
WR-1 Water Quality	Att. D	REC-2 Recreation Facilities Use Assessment	Att. N
WR-2 Hydrology	Att. E	REC-3 Recreation Facility Condition Assessment	Att. O
BIO-1 Foothill Yellow-legged Frog	Att. F	CUL-1 Cultural Resources	Att. P
BIO-2 Special Status Salamanders	Att. G	TRI-1 Tribal Resources	Att. Q
BIO-3 General Wildlife Resources	Att. H	Land-1 Road Condition Assessment	Att. R
BIO-4 Benthic Macroinvertebrate	Att. I	GEO-1 Erosion and Sedimentation	Att. S
BIO-5 Western Pond Turtle	Att. J	OPS-1 Water Conveyance Assessment	Att. T
BIO-6 Stream Habitat Typing	Att. K	AES-1 Aesthetic Flows	Att. U
BOT-1 Botanical Resources	Att. L	ANG-1 Enjoyable Angling Flows	Att. V
REC-1 Whitewater Boating	Att. M	EJ-1 Environmental Justice	Att. W

Cultural/Tribal Resources



CUL-1 Cultural Resources (Att. P)

- Study Elements Completed
 - Reviewed previously recorded and identified new archaeological resources, built-environment resources, and traditional cultural properties (TCPs) within APE
- Ongoing/Outstanding Study Elements
 - Finalize Technical Study Reports
 - Develop National Register of Historic Places Evaluation Plan
 - Prepare Historic Properties Management Plan
 - Consult with SQF and Tribes
- Variances
 - None

CUL-1 Cultural Resources

- Key Study Results
 - Archaeological Resources
 - Documented 34 archaeological sites
 - 5 sites were newly documented; remaining 29 were previously recorded
 - 1 newly documented and 3 previously documented sites contained built-environment elements related to the Project
 - Built-Environment Resources
 - Documented 18 resources - including the KR3 Historic District
 - All 18 resources are located within or cross the district, and are associated with the KR3HD

TRI-1 Tribal Resources (Att. Q)

- Study Elements Completed
 - None
- Ongoing/Outstanding Study Elements
 - Document Tribal Resources within or adjacent to the APE
 - Conduct an American Indian ethnographic/ethnohistoric survey
 - Finalize Technical Resource Reports
 - Prepare Historic Properties Management Plan
 - Consult with SQF and Tribes
- Variances
 - None
- Key Study Results
 - None

Questions / Comments

Water Resources



WR-1 Water Quality (Att. D)

- Study Elements Completed
 - Water temperature and dissolved oxygen (DO)
 - May – October 2021; May 2022 – May 2023*
 - Bacteriological Monitoring
 - Collected samples September – October 2022
 - Collected samples August – September 2023**
- Ongoing/Outstanding Study Elements
 - Additional bacterial sampling will be conducted summer 2024
 - Description of spillway operations
 - Data analysis and reports (water temperature, DO, bacterial)

*Deployment dates very depending on site due to high flow events preventing deployment of only water temperature data loggers deployed through May 2023

** Data collected post ISR Interim Technical Memorandum

WR-1 Water Quality (Att. D)

- Variances
 - Water Temperature and DO
 - High flows prevented retrieval and deployment of some data loggers
 - DO data logger malfunction and siltation issues limit data availability
 - Bacterial Sampling
 - Collected additional samples in summer 2022
 - Due to high flows in 2023, sampling over July 4th holiday was postponed until 2024
- Modifications to Ongoing Study
 - Redeploy water temperature and DO loggers from fall 2023 – summer 2024

WR-1 Water Quality

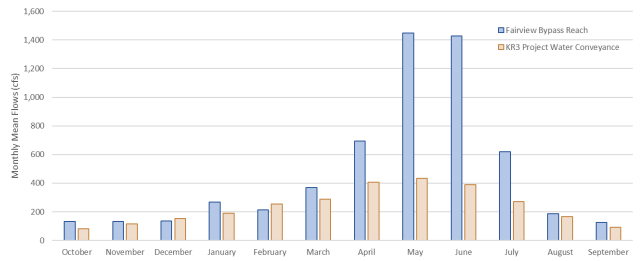
- Key Study Results
 - Water Temperature
 - Water warms from upstream to downstream
 - Seasonal variation with cooler temperatures in winter and warmer temperatures in summer
 - Dissolved Oxygen
 - DO levels generally follow seasonal patterns, decreasing with increased water temperatures
 - Bacteriological Monitoring
 - Initial samples (summer 2022) show generally low levels of fecal coliform, increasing following rain events

WR-2 Hydrology (Att. E)

- Study Elements Completed
 - Compiled hydrology data for water years 1997–2021
 - June 30, 2023 - posted data to public website and notified stakeholders
 - Summarized hydrology (1997-2022) and natural functional flow ranges of the NFKR, consistent with Section A of the California Environmental Flows Framework (CEFF)
- Ongoing/Outstanding Study Elements
 - Calculate flow travel times along the NFKR
 - Review and disseminate hourly gage data WY2022 and 2023
 - Summarize existing flow data from Salmon and Corral Creeks
- Variances
 - Hydrology analysis included an additional water year 2022

WR-2 Hydrology

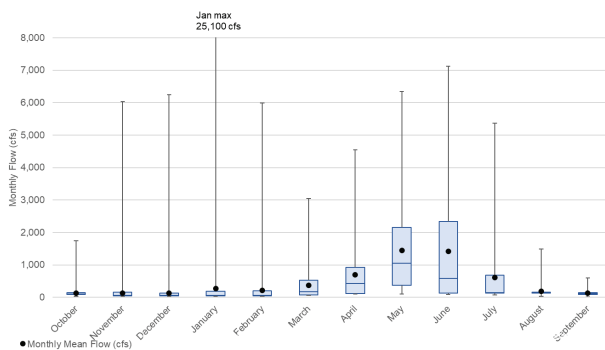
- Key Study Results- Hydrology Data
 - North Fork Kern River hydrograph for Fairview Dam Bypass Reach and KR3 Water Conveyance
 - Wettest periods typically occur during spring (April through June)



Monthly Mean Flow for Water Year 1997-2022

WR-2 Hydrology

- Key Study Results- Hydrology Data (Cont.)



Monthly flow in the Fairview Dam Bypass Reach, Water Years 1997–2022

WR-2 Hydrology

- Key Study Results- California Environmental Flows Framework
 - Identified 6 Ecological Management Goals for North Fork Kern River
 - Assessed the Ecological Management Goals to identify essential natural functional flows (e.g., wet season peak flow and dry-season baseflow)
 - Identified the natural flow ranges for each functional flow from the California Natural Flows Database (CNFD)

Questions / Comments

Energy for What's Ahead®



Biological & Botanical Resources

Energy for What's Ahead®



Fish Monitoring Study

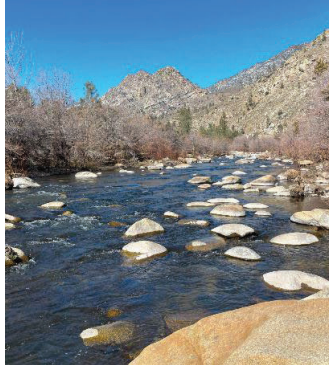
- Current License Requirement (License Article 411)
- Monitor fish populations every 5 years along the NFKR:
 - 2 sites above Fairview Dam
 - 2 sites between Dam and Goldlege Campground
 - 1 site in lower bypass reach
- Conducted field study Oct 2023
- Reporting
 - Due to agencies early 2024
 - File with FERC February 2024
 - Include information/analysis with DLA filing

BIO-6 Stream Habitat (Att. K)

- Study Elements Completed
 - Mapped macro-habitats within the Fairview Dam Bypass Reach using high-resolution aerial photographs
 - Aerial drone photographs collected by SCE in fall 2022
 - Conducted reach-scale habitat characterization along all study reaches
 - March and July 2023
- Outstanding Study Elements
 - None
- Variances
 - None

BIO-6 Stream Habitat

- Key Study Results
 - Habitat typing in NFKR were generally consistent with the results from 1991
 - Minor differences:
 - Higher percentage of boulder run versus boulder pocket water
 - Higher percentage of riffles versus runs



Representative Boulder Run on NFKR

BIO-1 Foothill Yellow-legged Frog (Att. F)

- Study Elements Completed
 - Phase I: Desktop analysis, field visit to assess suitable habitat, select sites
 - Site visit August 29-31, 2022, with SQF
 - Phase II: Implemented Field Surveys
 - Visual Encounter Surveys (VES) # 1: June 21-23, 2023
 - VES# 2: September 5-8, 2023*
 - Environmental DNA collection: September 5-8, 2023*
- Variances / Modifications to Ongoing Study
 - Sampling sites along the NFKR and Salmon Creek were inaccessible during the June survey event; will conduct VES in spring 2024
- Ongoing/Outstanding Study Elements
 - Data analysis and reporting
 - Phase III: Pending positive identification, additional data collection may be conducted

BIO-1 Foothill Yellow-legged Frog

- Key Study Results
 - No foothill yellow-legged frogs were observed
 - Suitable habitat for foothill yellow-legged frogs is present in the study area
 - Other herpetofauna observed included Sierran tree frogs, western pond turtles, and southern alligator lizards



BIO-4 Benthic Macroinvertebrate Survey (Att. I)

- Study Elements Completed
 - None
- Ongoing/Outstanding Study Elements
 - Field surveys are scheduled for October 2023 (flow and safety dependent)
 - Conduct an inventory and assessment of BMI diversity and abundance at 4 sites in the North Fork Kern River using an aquatic ecosystem health index
 - Data analysis and reporting will be completed following the field surveys
- Variances
 - None

BIO-2 Special-Status Salamanders (Att. G)

- Study Elements Completed
 - Phase I: Literature review and habitat assessment
 - October 25-28, 2022 and November 14-16, 2022
 - Installed cover boards at 3 locations
 - Phase II: Conducted field surveys at suitable habitat
 - #1: February 6-9, 2023
 - #2: April 17-18, 2023
- Outstanding Study Elements
 - None
- Variances
 - Second salamander survey delayed until April 2023
 - VESs not conducted due to site safety conditions:
 - Cover Object Searches (COSs) were conducted
 - Modified time-constrained search was used

10/17/2023

Energy for What's Ahead® | 36

BIO-2 Special-Status Salamanders

- Key Study Results
 - 3 Fairview salamanders were observed
 - 2 in Packsaddle Canyon
 - 1 in a small un-named canyon adjacent to Adit 16/17.
 - No other special status salamander species were observed
 - Other herpetofauna observed included gopher snake and Sierra garter snake



10/17/2023

Energy for What's Ahead® | 37

BIO-5 Northwestern Pond Turtle (Att. J)

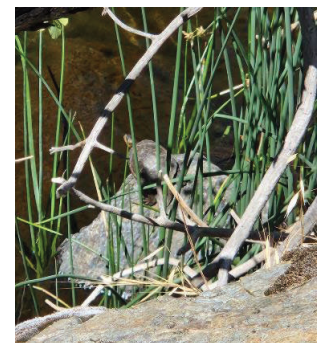
- Study Elements Completed
 - Phase I: Literature review and habitat assessment
 - October 25-28, 2022 and November 14-16, 2022
 - Phase II: Implemented Field Surveys
 - Survey #1: May 15-18, 2023
 - Survey #2: August 10-11, 2023
- Outstanding Study Elements
 - None
- Variances
 - Some potentially suitable habitat locations viewed using binoculars due to high flows and locations unsafe to access/cross during early breeding season surveys

10/17/2023

Energy for What's Ahead® | 38

BIO-5 Northwestern Pond Turtle

- Key Study Results
 - Suitable habitat is present in the study area
 - Most suitable habitat located within Cannell Ck
 - 1 adult observed below Siphon Road in Cannell Ck
 - 4 additional pond turtles were incidentally observed during FYLF surveys
 - 50m-400m above the Cannell Creek spillway
 - Other herpetofauna observed: Baja California treefrog, western fence lizard, common side-blotched lizard, and Sierra garter snake



10/17/2023

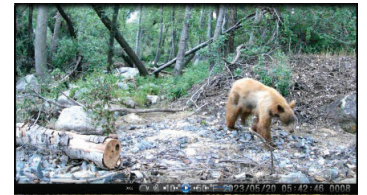
Energy for What's Ahead® | 39

BIO-3 General Wildlife Resources (Att. H)

- Study Elements Completed
 - Phase I: Literature review and habitat assessment
 - October 25-28, 2022, and November 14-16, 2022
 - Phase II: Field Surveys
 - #1: May 15-18, 2023
 - #2: June 21-23, 2023
 - #3: July 10-12, 2023
 - Installed and reviewed trail camera data in 2022 and 2023
- Outstanding Study Elements
 - None
- Variances
 - Recorded least Bell's vireo vocalizations not used during the surveys

BIO-3 General Wildlife Resources

- Key Study Results
 - No western yellow-billed cuckoo, southwestern willow flycatcher or least Bell's vireo were observed or detected
 - No sign of bat roosting was observed on any of the Project facilities
 - No California condors were observed
 - No Pacific fishers were observed or detected
 - Varying amounts of suitable habitat for these species is present in the study area



BOT-1 General Botanical Resources (Att. L)

- Study Elements Completed
 - Identified and mapped potentially suitable habitat for known and likely to occur special-status botanical resources and non-native invasive plants
 - Conducted floristic field surveys during 3 botanical survey periods
 - April 12-20, 2022; June 7-9, 2022; August 3-11, 2022
 - April 17-20, 2023; May 30-June 2, 2023
- Outstanding Study Elements
 - None
- Variances
 - High flows limited safe access along west bank NFKR during 2023 surveys
 - Red brome and cheatgrass were found in all survey areas; no specific geospatial data were recorded

BOT-1 General Botanical Resources

- Key Study Results
 - 10 special-status plants were found in the Study Area
 - Call's angelica
 - Kern River daisy
 - Kern Canyon clarkia
 - Limestone dudleya
 - Mojave tarplant
 - Piute cypress
 - Rose-flowered larkspur (=Kern County larkspur)
 - Tracy's eriastrum
 - Transverse Range phacelia
 - Two-colored monkey flower
 - 3 non-native invasive plants with a Cal-IPC rank of high were found
 - Red brome, cheatgrass, Himalayan blackberry

Questions / Comments

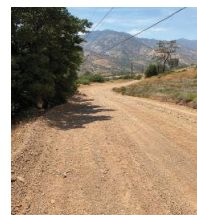
Land Resources and Project Operations

LAND-1 Road Condition Assessment (Att. R)

- Study Elements Completed
 - May 2023: Desktop review of road conditions and road maintenance practices
 - June 2023: Field assessment to characterize existing road conditions
 - June 2023: Initiated monthly spot counts on Project and Shared Access Roads
- Ongoing/Outstanding Study Elements
 - Road use spot counts through May 2024
 - Characterization of SCE's use along Project Roads
- Variances
 - Start of the monthly spot counts was delayed

LAND-1 Road Condition Assessment

- Key Study Results
 - 36 roads, totaling 19.33 miles were surveyed
 - 105 drainage features, including 75 culverts were mapped and inventoried
 - 56 erosion features were mapped and inventoried
 - 32 roads were categorized as "Good" to "Fair" condition



Left: Example of road in "Good Condition"



Right: Example of road in "Fair Condition"

GEO-1 Erosion and Sedimentation (Att. S)

- Study Elements Completed
 - Desktop review conducted May to June 2023
 - Reviewed aerial imagery, LiDAR topographic data from 2008 to 2009, and available operation maintenance records
 - Field survey conducted July 25–26, 2023
 - Document erosion from Project-related sources and shared access roads within the FERC Project Boundary
- Outstanding Study Elements
 - None
- Variances
 - None

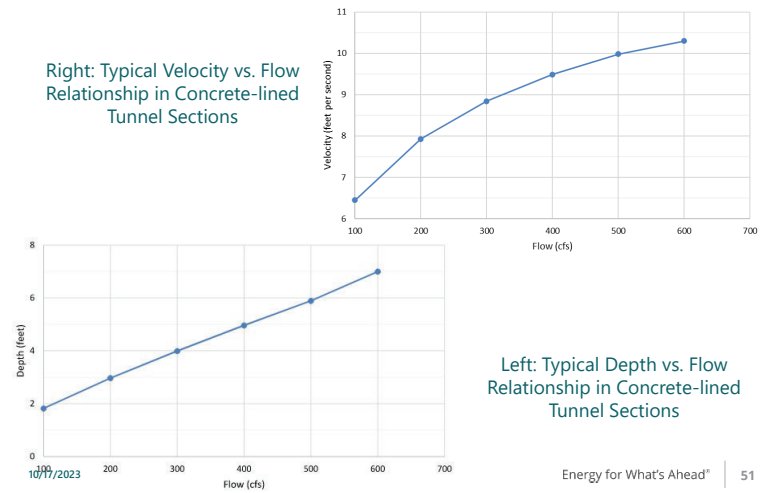
GEO-1 Erosion and Sedimentation

- Key Study Results
 - Desktop Review
 - Erosion and sedimentation are small scale and remained stable from 2005 to 2022 with few exceptions
 - KR3 Powerhouse Forebay Spillway channel and Cannell Creek Siphon and Spillway has remained largely unchanged since 2005
 - Field Survey: Erosion Locations
 - Surface erosion at 4 spoil sites pads
 - KR3 Spillway Channel (primarily early 1900s)
 - KR3 Powerhouse and access road bank erosion

OPS-1 Tunnel Assessment (Att. T)

- Study Elements Completed
 - Phase 1: Summarized existing literature
 - Phase 2: Completed engineering review and hydraulic assessment under varying flow conditions
- Ongoing/Outstanding Study Elements
 - Phase 2: structural integrity assessment, including a list of guidelines and recommendations for long-term Project operations and tunnel cycling
- Variances
 - None

OPS-1 Tunnel Assessment



EJ-1 Environmental Justice (Att. W)

- Study Elements Completed
 - Evaluated environmental justice communities within 1-mile of the Project
- Outstanding Study Elements
 - If applicable, evaluation of potential Project effects on EJ communities, and inclusion of mitigation measures to avoid or minimize Project impacts
- Variances
 - None

EJ-1 Environmental Justice

- Key Study Results
 - Three Census Block Groups (CBG) within 1-mile of the Project are classified as EJ communities based on income
 - The study area does not include any communities with high minority populations
 - Census Block Groups within 1-Mile of the Project

County	1-Mile Radius
Kern County	CT 52.07 BG 3 ^a
	CT 52.07 BG 2 ^a
	CT 52.08 BG 3 ^a
Tulare County	CT 27.01 BG 2 ^a

BG= Block Group; CT=Census Tract

^aEJ community based on low-income population higher than the relative counties.

Questions / Comments

Recreation Resources

REC-1 Whitewater Boating (Att. M)

- Study Elements Completed
 - Level 1: Desktop review and structured interview questionnaire
 - Level 2: Limited Reconnaissance Site Visit
 - Level 3: Intensive Study
 - Single flow boating survey initiated
- Ongoing/Outstanding Study Elements
 - Level 1: Analysis of structured interview questionnaire responses
 - Level 3: Intensive Study
 - Continuation of single flow boating survey
 - If needed, provide enhanced flow releases designed to target knowledge gaps
 - Comparative flow survey and comparative flow focus group
 - Level 3 Data analysis
- Variances
 - None

10/17/2023

Energy for What's Ahead* | 56

REC-1 Whitewater Boating

- Key Study Results
 - Level 1: Desktop Review
 - Summarized existing information
 - Structured interview questionnaire: May 5 – August 15, 2023
 - 51 responses received
 - Level 2: Limited Reconnaissance
 - Study participant self nomination: April 15 – May 15, 2023
 - 13 individuals self-nominated; 10 participated
 - Resource agencies: 2 agencies accepted; 1 attended
 - Conducted site visit on August 25, 2023
 - Level 3: Intensive Study
 - Single flow whitewater survey: April 1, 2023-ongoing
 - Boaters evaluate flows for each trip on the NFKR
 - 401 responses as of September 20, 2023

10/17/2023

Energy for What's Ahead* | 57

REC-2 Recreation Facilities Use Assessment (Att. N)

- Study Elements Completed
 - Visitor Surveys
 - Finalized survey questionnaire per SPD
 - Initiated in-person/online visitor surveys and spot counts in April 2023
 - Trail Cameras
 - Initiated installation in March 2023 and included 1-hr calibration counts
 - Initiated 2-hr calibration counts and spot counts in June 2023 following removal of cameras
- Ongoing/Outstanding Study Elements
 - Visitor Surveys
 - In-person visitor intercept surveys and spot counts continue through March 2024
 - Online visitor surveys available through March 2024
 - Two-hour calibration counts and spot counts continue through March 2024 (in lieu of trail cameras)
 - Data analysis and reporting following completion of field surveys

10/17/2023

Energy for What's Ahead* | 58

REC-2 Recreation Facilities Use Assessment

- Variances
 - Visitor Surveys
 - Reworded visitor survey questions
 - Revised daily start/end time
 - Combined 2 survey circuits into 1 circuit
 - Shifted 1yr calendar date for visitor surveys
 - Trail Cameras
 - Removed all trail cameras; replaced with 2-hr calibration counts and spot counts
- Modifications to Ongoing Study
 - Start/end times coincide with sunrise/sunset
 - Continue 1-circuit data collection approach
 - Continue with 2-hr calibration and spot counts through March 2024

10/17/2023

Energy for What's Ahead* | 59

REC-2 Recreation Facilities Use Assessment

- Data Summary To Date
 - Visitor Surveys, Spot Counts and One-hour Calibration counts
 - 16 visitor survey days
 - 1,014 recreationists approached
 - 734 completed survey 280 declined to participate
 - 16 spot count days
 - 5 one-hour calibration counts
 - Two-hour Calibration Counts and Spot Counts
 - 11 two-hour calibration counts
 - 11 spot counts
 - Online Surveys
 - 15 surveys submitted

REC-3 Existing Recreation Facilities Condition Assessment (Att. O)

- Study Elements Completed
 - Facility inventory and condition assessment
 - Field surveys conducted October 11-13, 2022
 - Assessed the condition and potential for universal accessibility, where feasible
 - Identified existing dispersed recreation sites, including documentation of existing conditions
- Outstanding Study Elements
 - None
- Variances
 - None

REC-3 Existing Recreation Facilities Condition Assessment

- Key Study Results
 - 15 developed recreation facilities inventoried, and condition assessment completed
 - Overall, sites are in adequate condition
 - 14 sites are SQF owned/operated (non-Project facilities)
 - 1 site is a KR3 Project Facility
 - 7 dispersed recreation sites assessed
 - All sites are SQF owned/operated (non-Project facilities)
 - No Fee required
 - First-come/first-serve availability

AES-1 Aesthetic Flows Study (Att. U)

- Study Elements Completed
 - Level 1 Desktop Review of Existing Information
 - Literature review describing landscape and aesthetic resources
 - Updated aesthetic questions for the REC-2 visitor intercept survey
 - Summarized resource management goals and objectives
 - USFS Scenery Management System for Fairview Dam Bypass Reach
- Ongoing/Outstanding Study Elements
 - Complete Level 1: Desktop Review
 - Analyze responses from REC-2 Visitor Intercept Survey
 - Assess need for Level 2 Limited Reconnaissance based in part on REC-2 Visitor Intercept Survey
 - If needed, progression to Level 3

AES-1 Aesthetic Flows Study

• Variances / Modifications to Ongoing Study

- Level 2 Reconnaissance Assessment
 - Not conducted concurrently with REC-1 Whitewater Boating Level 2 Reconnaissance Assessment
 - If applicable, the Level 2 assessment will include a diverse group of Stakeholders, not only those who participated in the REC-1 Level 2 Reconnaissance effort
- Study Implementation Schedule
 - Data collection as part of Level 1 Desktop Analysis is ongoing, premature to conclude the need for progression to Level 2 and Level 3 assessments
 - If applicable, SCE will evaluate the need for further intensive data collection (i.e., Level 2 assessment) and will include a rationale and justification for its conclusions regarding recommendation on whether to proceed to the next level of study.

ANG-1 Enjoyable Angling Flows (Att. V)

• Study Elements Completed

- Level 1 Desktop Study
 - Literature review describing river characteristics and angling opportunities
 - Structured interviews with persons knowledgeable about angling in the Project Area
 - Updated angling questions for REC-2 visitor intercept survey
 - Summarized resource agency goals and objectives

• Ongoing/Outstanding Study Elements

- Complete Level 1: Desktop Study
- Analyze angling question responses in REC-2 Visitor Intercept Survey
- Assess need for Level 2 Limited Reconnaissance based in part on REC-2 Visitor Intercept Survey
- If needed, progression to Level 3

ANG-1 Enjoyable Angling Flows

• Variances / Modification to Ongoing Study

- Data collection as part of Level 1 Desktop Analysis is ongoing, premature to conclude the need for progression to Level 2 and Level 3 assessments
- If applicable, SCE will evaluate the need for further intensive data collection (i.e., Level 2 assessment) and will include a rationale and justification for its conclusions regarding recommendation on whether to proceed to the next level of study.

Questions / Comments

Next Steps

Energy for What's Ahead®



Next Steps

- **November 1, 2023:** SCE will file the ISR Meeting Summary with FERC
- **December 11, 2023:** Stakeholders can file written comments with FERC
 - Associated with the ISR / ISR meeting notes
 - New/modified study requests per 18 CFR §5.15(d) or (e)

10/17/2023

Energy for What's Ahead® | 69

KR3 Project Contact Information

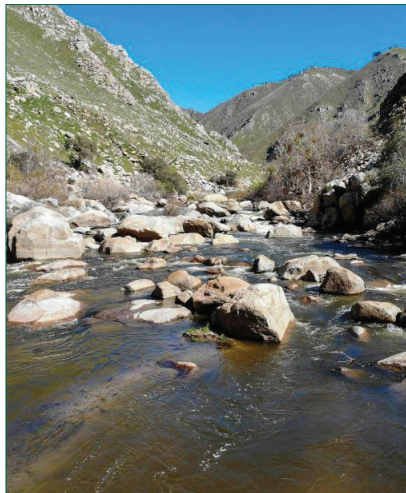
Federal Energy Regulatory Commission

- *Quinn Emmering*
- *Division of Hydropower Licensing*
- *(202) 502-6382*
- Quinn.emmering@ferc.gov

Southern California Edison Company

- *David Moore*
- *Hydro Licensing & Implementation*
- *(626) 302-9494*
- David.moore@sce.com

Project Website: www.sce.com/kr3



10/17/2023

Energy for What's Ahead® | 70

ATTACHMENT C DISTRIBUTION LIST

FERC Project No. 2290 Official Service List (retrieved October 24, 2023)

<p>Kern River Boater Brett Duxbury, Co-Director P.O. Box 1938 Kernville, CA 93238 kernville@mac.com</p>	<p>Kern River Fly Fishers James Ahrens 8536 Kern Canyon Road, 201 Bakersfield, CA 93306 Jimaherns@gmail.com</p>
<p>American Whitewater Kevin Richard Colburn, National Stewardship Director 1035 Van Buren Street Missoula, MT 59802 kevin@amwhitewater.org</p>	<p>Federal Energy Regulatory Commission Case Administration Southern California Edison Company 2244 Walnut Grove Ave Rosemead, CA 91770 ferccaseadmin@sce.com</p>
<p>Southern California Edison Company Kelly Henderson, Attorney, P.O. Box 800 Rosemead, CA 91770 kelly.henderson@sce.com</p>	<p>Southern California Edison Company Mary M. Richardson, Senior Advisor, Regulatory Affairs & Compliance 1515 Walnut Grove Ave Rosemead, CA 91770 mary.m.richardson@sce.com</p>
<p>Southern California Edison Company Martin Ostendorf, Compliance Manager 54170 Mtn Spruce Road, P.O. Box 100 Big Creek, CA 93605 martin.ostendorf@sce.com</p>	<p>Southern California Edison Company Mary Schickling, Senior Specialist 1 Pebbly Beach Road Avalon, CA 90704 mary.schickling@sce.com</p>
<p>Southern California Edison Company Brittany Arnold 1 Pebbly Beach Rd Avalon, CA 90704 brittany.arnold@sce.com</p>	<p>Southern California Edison Company Patrick B. Le 1515 Walnut Grove Ave Rosemead, CA 91770 patrick.le@sce.com</p>
<p>US Department of the Interior Kerry O'Hara, Assistant Regional Solicitor 2800 Cottage Way, RM E-1712 Sacramento, CA 95825-1946 SOL-FERC@sol.doi.gov</p>	<p>National Park Service Stephen Bowes 333 Bush Street San Francisco, CA 94104 stephen_bowes@nps.gov</p>
<p>U.S. Forest Service Dawn Alvarez, RHAT, Regional Hydropower Program Manager 1323 Club Drive Vallejo, CA 94592 dawn.alvarez@usda.gov</p>	<p>U.S. Forest Service Kellie Whitton, Fisheries Biologist Program Manager 2150 Centre Ave, Bldg. A, Suite 368 Fort Collins, CO 80526 kellie.whitton@usda.gov</p>
<p>U.S. Forest Service Patrick Redmond, ESQ, Attorney-USDA 1400 Independence Ave. SW, Room 3336-B Washington, District of Columbia 20250 patrick.redmond@usda.gov</p>	<p>U.S. Forest Service Monique Sanchez, Hydropower Coordinator 1980 Old Mission Drive, Solvang, CA 93463 monique.sanchez@usda.gov</p>
<p>American Whitewater Theresa L. Lorejo-Simsiman, California Stewardship Director 12155 Tributary Point Dr. Gold River, CA 95670 theresa@americanwhitewater.org</p>	<p>Friends of the River Ronald Martin Stork 1418 20th St, Suite 100 Sacramento, CA 95811-5206 rstork@friendsoftheriver.org</p>

National Park Service Stephen M. Bowes 909 1st Ave Ste 500 Seattle, WA 98104 stephen_bowes@nps.gov	Southern California Edison Company Wayne P Allen, Principal Manager PO Box 100 Rosemead, CA 93605-0100 wayne.allen@sce.com
Southern California Edison Company Nicolas von Gersdorff, Chief Dam Safety Engineer 1515 Walnut Grove Ave Rosemead, CA 91770 nicolas.von@sce.com	Southern California Edison Company Cornelio Artienda, Senior Advisor 1515 Walnut Grove Ave Rosemead, CA 91770 Cornelio.Artienda@sce.com
Southern California Edison Company Christy Fanous, Managing Director PO Box NA Rosemead, CA 91770 UNITED STATES christine.fanous@sce.com	

Federal Government/Representatives

Advisory Council on Historic Preservation John Eddins, Executive Director jeddings@achp.gov 401 F Street NW, Suite 308 Washington, DC 20001	Bureau of Land Management Alison Lipscomb 3801 Pegasus Drive Bakersfield, CA 93308 alipscomb@blm.gov
Environmental Protection Agency Environmental Review Branch Sarah Samples 415-972-3961 samples.sarah@epa.gov	Federal Energy Regulatory Commission Frank Winchell Frank.winchell@ferc.gov
Federal Energy Regulatory Commission Khatoon Melick khatoon.melick@ferc.gov	Federal Energy Regulatory Commission Jessica Fefer Jessica.Fefer@ferc.gov
Federal Energy Regulatory Commission Quinn Emmering Quinn.emmering@ferc.gov	National Park Service Alyssa Walker
National Park Service Rivers, Trails, and Conservation and Hydropower Assistance Program Barbara Rice barbara_rice@nps.gov	National Park Service Lilian Jonas P.O. Box 915 Red Bluff, CA 96080 lilian_jonas@contractor.nps.gov
National Park Service Patrick Johnston, Acting Program Manager	National Park Service Susan Rosebrough, Hydropower Assistance Team Lead Susan_Rosebrough@nps.gov
U.S. Bureau of Indian Affairs Ronald Jaeger, Director 2800 Cottage Way Sacramento, CA 95825-1946	U.S. Geological Survey Don M Klein, Chief Water Resources Division Placer Hall 6000 J St, Suite 2012 Sacramento, CA 95819-6129

U.S. Fish and Wildlife Service Chloe Hansum, Biologist Sierra/Cascades Division Sacramento Fish and Wildlife Office chloe_hansum@fws.gov	U.S. Fish and Wildlife Service Rebecca Kirby 2800 Cottage Way, Room W-2605 Sacramento, CA 95825 rebecca_kirby@fws.gov
U.S. Fish and Wildlife Service Rick Kuyper, Sierra-Cascades Division Supervisor 2800 Cottage Way Room W-2605 Sacramento, CA 95825 richard_kuyper@fws.gov	U.S. Fish and Wildlife Service Elizabeth Menchaca elizabeth_menchaca@fws.gov
U.S. Forest Service Alfred "Al" Watson 11380 Kernville Rd Kernville, CA 93238 alfred.watson@usda.gov	U.S. Forest Service - Sequoia National Forest Chris Sanders 11380 Kernville Road P.O. Box 9 Kernville, CA 93238 chris.sanders@usda.gov
U.S. Forest Service - Sequoia National Forest Stacy Lundgren 11380 Kernville Road P.O. Box 9 Kernville, CA 93238 stacy.lundgren@usda.gov	U.S. Forest Service - Sequoia National Forest Gretchen Fitzgerald 11380 Kernville Road P.O. Box 9 Kernville, CA 93238 gretchen.fitzgerald2@usda.gov
U.S. Forest Service - Sequoia National Forest Jonathan Markovich 11380 Kernville Road P.O. Box 9 Kernville, CA 93238 jonathan.markovich@usda.gov	U.S. Forest Service - Sequoia National Forest Joseph "Joey" Martin, Natural Resource Specialist 11380 Kernville Road P.O. Box 9 Kernville, CA 93238 Joseph.martin@usda.gov
U.S. Forest Service - Sequoia National Forest Karen Miller, Services Staff Officer/Federal Energy Regulatory Commission Coordinator 1839 S Newbomb St Porterville, CA 93257 karen.miller@usda.gov	U.S. Forest Service - Sequoia National Forest Kyle Lane 11380 Kernville Road P.O. Box 9 Kernville, CA 93238 kyle.lane@usda.gov
U.S. Forest Service - Sequoia National Forest Norman Leonard NEPA Planner, Kern River Ranger District 11380 Kernville Road Kernville, CA 93238 912-258-2774 norman.leonard@usda.gov	U.S. Forest Service - Sequoia National Forest Philip H Bayles, Supervisor 1839 S Newcomb St Porterville, CA 93257 Philip.bayles@usda.gov
U.S. Forest Service Philip Desenze philip.desenze@usda.gov	U.S. Forest Service Robert (Bob) Frenes Robert.Frenes@usda.gov
U.S. Forest Service Ruby Gonzalez Ruby.Gonzalez@usda.gov	U.S. Forest Service Eric Lundgren eric.lundgren@usda.gov

U.S. Forest Service - Sequoia National Forest Stephen Elgart 11380 Kernville Road; P.O. Box 9 Kernville, CA 93238 stephen.elgart@usda.gov	U.S. Forest Service – Pacific SW Region Teresa Benson, Forest Supervisor teresa.benson@usda.gov
U.S. Forest Service - Sequoia National Forest Tim Kelly 11380 Kernville Road; P.O. Box 9 Kernville, CA 93238 Tim.Kelly@usda.gov	U.S. Forest Service Victor Aguirre Orozco victor.aguirreorozco@usda.gov
U.S. Forest Service Gerald Hitchcock gerald.hitchcock@usda.gov	

State Government/Representatives

California Department of Fish and Wildlife George Nokes, Regional Manager 1234 East Shaw Avenue Fresno, CA 93710	Office of Historic Preservation State Historic Preservation Officer P.O. Box 942896 Sacramento, CA 94296-0001
California Department of Fish and Wildlife Abimael Leon 1130 East Shaw Avenue Fresno, CA 93710 abimael.leon@wildlife.ca.gov	California Regional Water Resource Control Board William Crooks, Executive Officer 1685 E. Street Fresno, CA 93706-2007
California Department of Fish and Wildlife Brian Beal 1130 East Shaw Avenue Fresno, CA 93710 brian.beal@wildlife.ca.gov	California State Water Resource Control Board Andrea Sellers P.O. Box 100 1001 I Street Sacramento, CA 95814 Andrea.Sellers@Waterboards.ca.gov
California Department of Fish and Wildlife Dale Stanton 1130 East Shaw Avenue Fresno, CA 93710 Dale.Stanton@wildlife.ca.gov	California State Water Resource Control Board Parker Thaler P.O. Box 100 1001 I Street Sacramento, CA 95814 parker.thaler@waterboards.ca.gov
California Department of Fish and Wildlife Eric Jones 1130 East Shaw Avenue Fresno, CA 93710 Eric.Jones@wildlife.ca.gov	California State Water Resources Control Board Ann Marie Ore P.O. Box 100 1001 I Street Sacramento, CA 95814 wr401program@waterboards.ca.gov
California Department of Fish and Wildlife - Kern River Hatchery 14415 Sierra Way Kernville, CA. 93238 kernriver@wildlife.ca.gov	California State Water Resources Control Board Garrett Long P.O. Box 2000 Sacramento, CA 95812 garrett.long@waterboards.ca.gov
California Department of Fish and Wildlife – Central Region Valerie Cook, Acting Regional Manager	California State Water Resources Control Board James Noss James.Noss@Waterboards.ca.gov

Native American Tribes

<p>Big Pine Paiute Tribe of Owens Valley James Rambeau – Chairperson P.O. Box 700 Big Pine, CA 93513 j.rambeau@bigpinepaiute.org</p>	<p>Kawaiisu Tribe David Laughing Horse Robinson - Chairman P.O. Box 1547 Kernville, CA 93238</p>
<p>Big Pine Paiute Tribe of Owens Valley Jacqueline "Danelle" Gutierrez – THPO P.O. Box 700 Big Pine, CA 93513 d.gutierrez@bigpinepaiute.org</p>	<p>Kern Valley Indian Community Julie Tunner – Secretary P. O. Box 1010 Lake Isabella, CA 93240</p>
<p>Big Pine Paiute Tribe of Owens Valley Sally Manning - Environmental Director P.O. Box 700 Big Pine, CA 93513 s.manning@bigpinepaiute.org</p>	<p>Kern Valley Indian Community Brandy Kendricks 30741 Foxridge court Tehachapi, CA 93561 krazykendricks@hotmail.com</p>
<p>Chumash Council of Bakersfield Julio Quair - Chairperson 729 Texas Street Bakersfield, CA 93307</p>	<p>Kitanemuk and Yowlumne Tejon Indians Delia Dominguez – Chairperson 115 Radio Street Bakersfield, CA 93305 2deedominguez@gmail.com</p>
<p>Fort Independence Community of Paiute Indians Carl Dahlberg – Chairman P.O. Box 67 Independence, CA 93526</p>	<p>Lone Pine Paiute-Shoshone Tribe Richard Button – Chairperson P.O. Box 747 Lone Pine, CA 93545 chair@lpsr.org</p>
<p>Fort Independence Community of Paiute Indians Sean Scruggs – THPO P.O. Box 67 Independence, CA 93526 thpo@fortindependence.com falconkeeper22@gmail.com</p>	<p>Lone Pine Paiute-Shoshone Tribe Kathy Bancroft – THPO P.O. Box 40 Lone Pine, CA 93545 kathybancroft@gmail.com</p>
<p>Kern Valley Indian Community Robert Robinson P.O. Box 1010 Lake Isabella, CA 93240 bbutterbredt@gmail.com</p>	<p>Santa Rosa Rancheria Tachi Yokut Cultural Department 16998 Kent Ave Leemore, CA 93245</p>
<p>Kawaiisu Band of Kern Valley Indians Cathy Day P.O. Box 1210 Weldon, CA 93283</p>	<p>Tachi Yokut Tribe Maria Gonzales mgonzales@tachi-yokut-nsn.gov</p>
<p>Tejon Indian Tribe Octavio Escobedo – Chairperson P.O. Box 640 Arvin, CA 93203 oescobedo@tejonindiantribe-nsn.gov</p>	<p>Tule River Indian Tribe Kerri Vera - Environmental Coordinator P.O. Box 589 Porterville, CA 93258 tuleriverenv@yahoo.com</p>
<p>Tubatulaba Tribe of Kern Valley Robert Gomez - Chairman P.O. Box 226 Lake Isabella, CA 93240 rgomez@tubatulabal.org</p>	<p>Tule River Indian Tribe Neil Peyron – Chairman P.O. Box 589 Porterville, CA 93258 neil.peyron@tulerivertribe-nsn.gov</p>

<p>Tubatulabal Tribe Darrel Garcia-Vice Chair P.O. 226 Lake Isabella, CA 93240 dgarcia@tubatulabal.org</p>	<p>Wuksache Indian Tribe/Eshom Valley Band Kenneth Woodrow – Chairperson 1179 Rock Haven Court Salinas, CA 93906 kwood8934@aol.com</p>
<p>Big Pine Paiute Tribe of Owens Valley L’eaux Stewart – Chairperson P.O. Box 700 Big Pine, CA 93513 l.stewart@bigpinepaiute.org</p>	<p>Santa Rosa Rancheria Tachi Yokut Leo Sisco – Chairperson P.O. Box 8 Leemore, CA 93245</p>
<p>Tule River Indian Tribe William Garfield – Chairman P.O. Box 589 Porterville, CA 93258 William.garfield@tulerivertribe-nsn.gov</p>	<p>Santa Rosa Rancheria Tachi-Yokut Tribe Paige Berggren, Cultural Specialist Monitor I PBerggren@tachi-yokut-nsn.gov</p>
<p>Tachi Yokut Tribe Shana Powers spowers@tachi-yokut-nsn.gov</p>	

Local Government/Public Agency

<p>Kern County, CA Admin and Courts Building 1415 Truxtun Bakersfield, CA 93301-5215</p>	<p>North Kern Water Storage District Charles H William, Engineer P.O. Box 81435 Bakersfield CA 93380</p>
<p>Kernville Chamber of Commerce Bryan Batdorf 119 Spruce Ave (box 1558) Kernville, CA 93238 bryanbatdorf@hotmail.com</p>	<p>Tulare County, CA Board of Supervisors 2800 W. Burrel Ave. Visalia, CA 93291</p>
<p>Water Association of Kern County-Kern River Watermaster Dana Munn, Kern River Master P.O. Box 1168 Wasco, CA 93280-8068</p>	<p>California Electricity Oversight Board v. Sellers of Long-Term Contracts to the California Department of Water Resources Legal Department 455 Golden Gate Ave, Ste 11000 San Francisco, CA 94102-7004</p>

Other Local Organizations, Businesses, and Public Interest

<p>California Sport Fishing Protection Alliance Bill Jennings 3536 Rainier Avenue Stockton, CA 95204 bjennings@calsport.org</p>	<p>Kern River Boaters Jose L. Pino, Vice President jpino@keysight.com</p>
<p>Energy Systems Engineering Karl Hemmila 10861 E Calle Desierto Tucson, AZ 85748 KHemmila@ESEngs.com</p>	<p>Kern River Outfitters Matt Volpert 6602 Wofford Blvd Wofford Heights, CA 93285 Matt@kernrafting.com</p>
<p>Kern River Fly Fishers Council Timothy McNeely 2206 Cedar Bakersfield, CA 93301 tim@lifestoneco.com</p>	<p>Victoria Ramirez, Vice President Kern River Conservancy P.O. Box 1411 Kernville, CA 93238 victoria@kernriverconservancy.org</p>
<p>HDR Inc. Eric Girardin 2379 Gateway Oaks Drive Sacramento, California 95818 eric.girardin@hdrinc.com</p>	<p>Kern Valley River Council P.O. Box 497, Kernville, CA Katharine "Kat" Edmonson katharine4@gmail.com</p>
<p>Kayaket Thomas Livingstone P.O. Box 189 Silverton, CO 81433 tlphoto@frontier.net</p>	<p>LA County Beach Commission Anthea Raymond 2600 Jeffries Ave Los Angeles, CA 90065 anthea.raymond@gmail.com lariverbeach@gmail.com</p>
<p>American Whitewater Julie Gantenbein, Staff Attorney 2140 Shattuck Avenue, Ste. 801 Berkeley, CA 94704-1229 jgantenbein@waterpowerlaw.com</p>	<p>Kern River Conservancy Gary Ananian P.O. Box 1042 Kernville, CA 93238 gary@kernriverconservancy.org</p>
<p>Keepers of the Kern Rex Hinkey, President P.O. Box 655 Kernville, CA. 93238 keepersofthekern@gmail.com</p>	<p>Mountain and River Adventures Rhonda Stallone 15775 Sierra Way Kernville, CA 93238 rhondas@mtnriver.com</p>
<p>Kern Community Foundation Louis Medina 3300 Truxtun Avenue, Suite 220 Bakersfield, CA 93301 louis@kernfoundation.org</p>	<p>Sierra South Mountain Sports Evan Moore P.O. Box 1909 Kernville, CA 93238 evan@sierrasouth.com</p>
<p>Kern River Boaters Elizabeth "Liz" Duxbury, President 1311 Avenida de la Estrella San Clemente, CA 92672 lizbrackbill@gmail.com</p>	<p>Sierra South Mountain Sports Steven Merrow 11300 Kernville Rd Kernville, California 93238 stevemerrow@gmail.com</p>
<p>Kern River Brewing Company Eric Giddens 13415 Sierra Way</p>	<p>Sierra South Mountain Sports Tom Moore P.O. Box 1909</p>

Kernville, CA 93238 eric@kernriverbrewing.com	11300 Kernville Road Kernville, CA 93238 tom@sierrasouth.com
American Whitewater Jeffrey Venturino jeffventurino@americanwhitewater.org	Whitewater Voyages Chris Brown 11252 Kernville Road Kernville, CA 93238 chris@whitewatervoyages.com
Trout Unlimited 1777 N. Kent Street, Suite 100 Arlington, VA 22209 703-522-0200	Kern River Boaters Box 1938 Kernville, CA 93238 760-376-1905 kernriverboaters@gmail.com
Kern River Conservancy Kristin Pittack, Vice President P.O. Box 1411 Kernville, CA 93238 kristin@kernriverconservancy.org	Kern River Outfitters / California Recreation Foundation Chuck Richards 15729 Sierra Way Kernville, CA 93238 office@kernrafting.com; chuck@chuckrichards.com; fallingwaters@chuckrichards.com
Kern Community Foundation Kristen Beall Watson kristen@kernfoundation.org	Lacey Anderson lacey2u@sbcglobal.net
Sam Rusak srusak13@gmail.com	David Diller mtnjd@gmail.com
Keith Stephens luth77@hotmail.com	Denis Kearns cyclanthera@netscape.net
John Stallone johns@mtnriver.com	Donette Dunaway dunawayfields@yahoo.com
Jonathan Cizmar jonathan.cizmar@gmail.com	Guy Jeans guyjeans8@gmail.com
Neil Nikirk nnikrik@gmail.com	John Chase chasewhitewater@gmail.com
Dale Murphy calmyoga@gmail.com	Steve Merrow stevemerrow@gmail.com
Lindsay Bennet bennett_lindsey@yahoo.com	Lawrence Wade Lawrence.a.wade@jpl.nasa.gov
Peter Wiechers brahea22@hotmail.com peterrpm@yahoo.com	Rebecca Giddens rebecca@kernriverbrewing.com Kenny Bushling krbriver@gmail.com

Michael Sullivan
southlakesully@gmail.com

Hilde Schweitzer
hilde@amriver.us

Mark Ritchie
markritchie101@gmail.com

Mark Witsoe
witsoem@kerncounty.com

Southern California Edison Staff

David Moore
David.Moore@sce.com

Gabriela G. Ornelas
Gabriela.ornelas@sce.com

Daniel Keverline
Daniel.keverline@sce.com

Derrick Tito
Derrick.tito@sce.com

Tom Gelder
jtgelder@yahoo.com

Charles R. Sensiba
charles.sensiba@troutman.com

John Pavletich
jpvavletich@pavelectric.com

Joshua Gordon
josh@furface.com