

**To:** Southern California Edison (SCE)  
**From:** Prime Group  
**Date:** April 2023  
**Re:** Wildfire risk reduction research

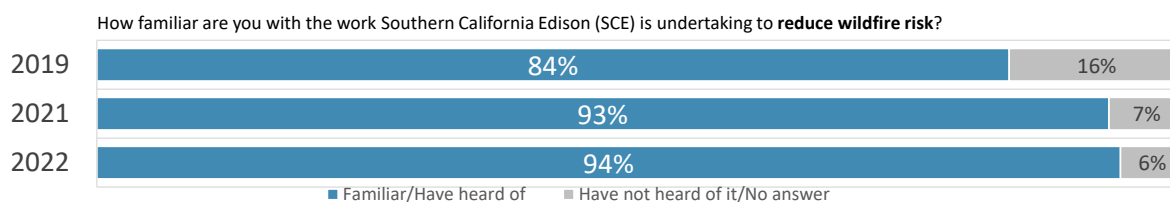
## Methodology

Prime Group, on behalf of SCE, conducted an online survey from September 21 – October 25, 2022 with city and county local elected officials and leadership. The survey used a census approach, so all local officials in the SCE service area with email addresses received an invitation to participate. A total of 2,016 survey invitations were sent and n=270 local leaders participated, a response rate of 13%. One hundred and eighty-four (184) survey participants represent high-fire risk areas (HFRAs).

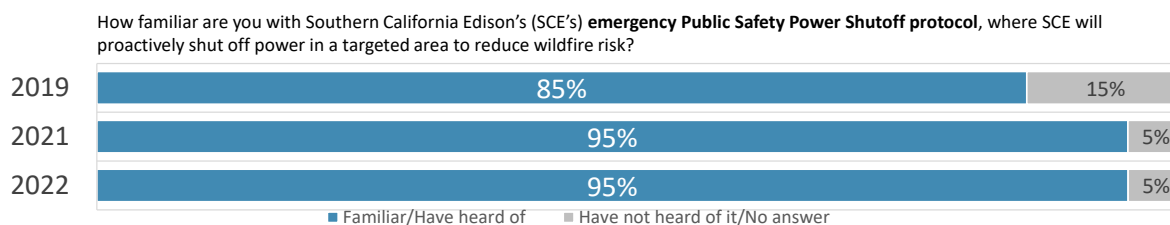
This is the fourth annual survey of local elected officials and leadership conducted by SCE. The three most recent surveys – 2019, 2021, and 2022 – include questions focused on wildfire risk reduction, the results of which are detailed below.

## Familiarity with Wildfire Risk Reduction Work

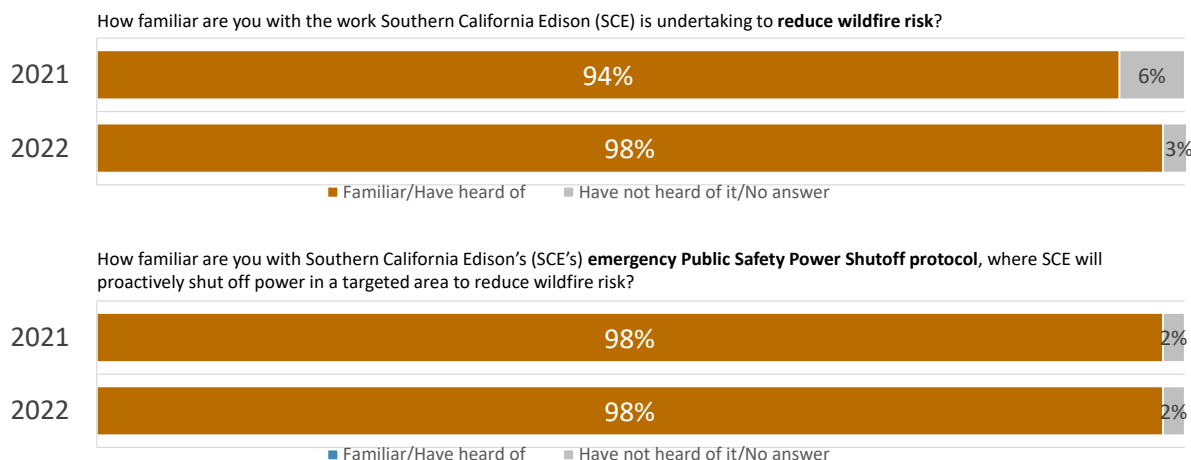
Over nine-in-ten (94%) of local leaders are familiar with or have heard of the work SCE is undertaking to reduce wildfire risk. This is consistent with 2021 (93%) and a ten percentage point increase from 2019.



Familiarity with Public Safety Power Shutoff (PSPS) has also remained extremely high. Nearly all leaders (95%) are familiar with or have heard of PSPS, in line with 2021 (95%) and a ten percentage point increase over 2019 (85%).

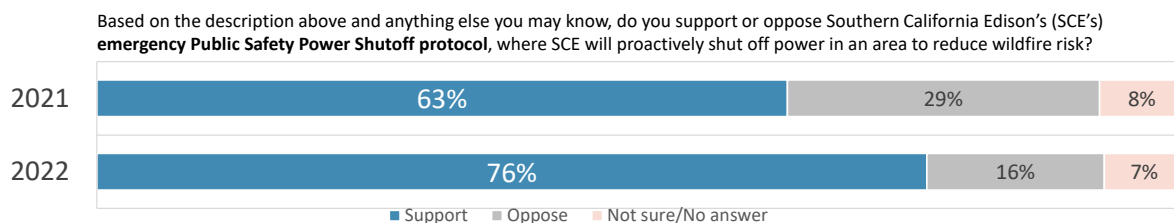


Among HFRA respondents, the familiarity levels are slightly higher – 97% are familiar with or have heard of SCE work to reduce wildfire risk, and 98% are familiar with or have heard of PSPS.



## Support for Public Safety Power Shutoff

Support for PSPS among local leaders has improved from 2021 to 2022. In 2021, about six-in-ten (64%) local leaders say they strongly support (23%) or somewhat support (41%) SCE's Public Safety Power Shutoff protocol (PSPS). In the current survey, over three-in-four (76%) strongly support (31%) or somewhat support (45%) PSPS. *(This question was not asked in the 2019 survey.)*



Support is even higher among leaders representing HFRA's, with 79% either saying they strongly support (31%) or somewhat support (48%) PSPS. This is a substantial increase in support over 2021 (63% support).

