

Figure 5.8-1. Recreation Opportunities in the Project Vicinity

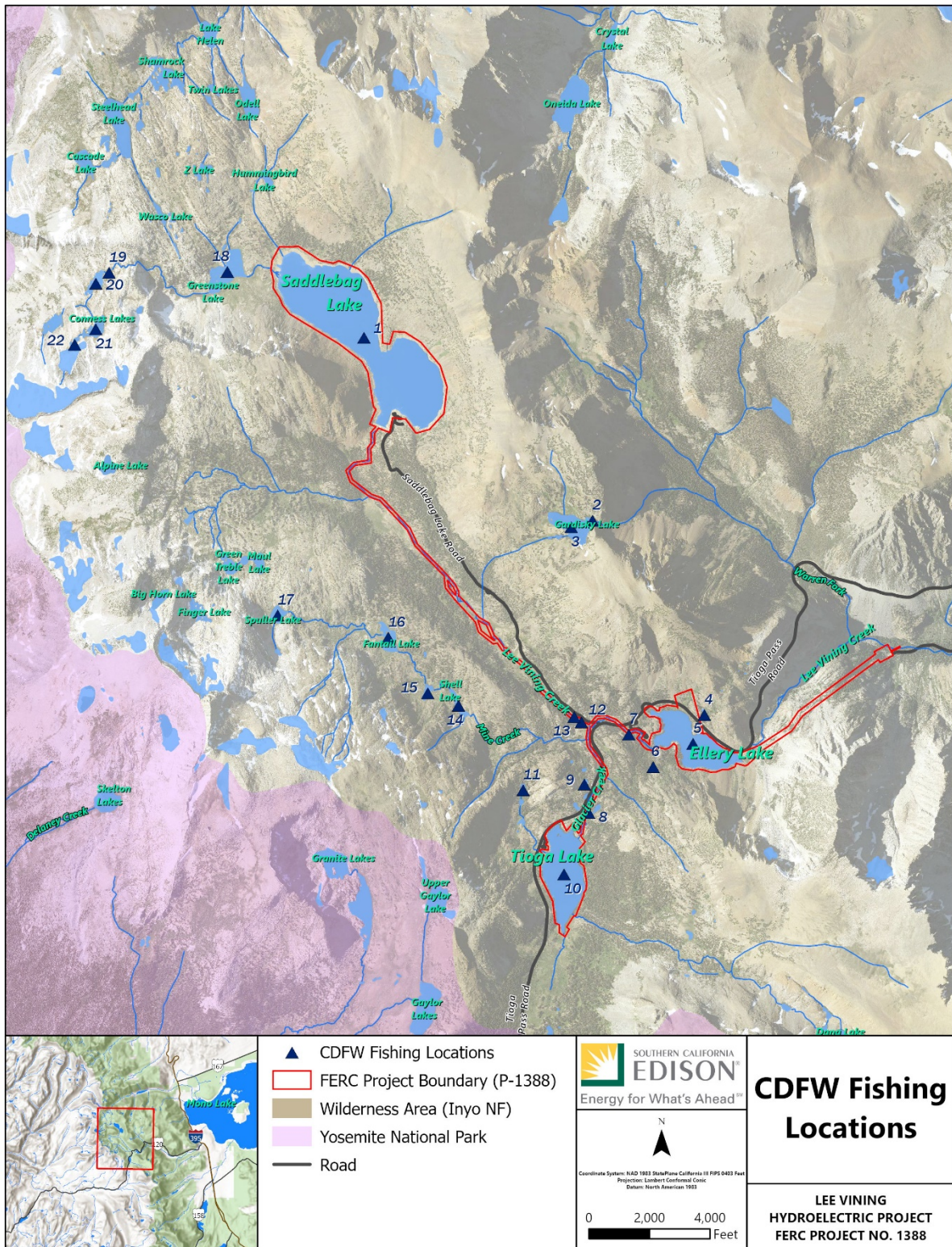


Figure 5.8-2. Fishing Sites in the Project Vicinity

Table 5.8-2. CDFW Fishing Location Data in Project Watershed

| Map ID ^a | Location | Last Stocked | Species Present | Size | Elevation (feet amsl) |
|---------------------|------------------------------------|--------------|-----------------|-------------|-----------------------|
| 1 | Saddlebag Lake | 2019 | HT | 325 acres | 10,087 |
| 2 | Unnamed Lake #27256 | n/a | not listed | not listed | not listed |
| 3 | Gardisky Lake | n/a | BT | 19.92 acres | 10,480 |
| 4 | Richardson Tarn | n/a | BT | 0.79 acres | 9,548 |
| 5 | Ellery Lake | 2019 | HT | 68 acres | 9,500 |
| 6 | Unnamed Lake #17323 | n/a | BT | 0.32 acres | 9,563 |
| 7 | Lee Vining Creek, South Fork | 2019 | HT | 3 acres | 9,500 |
| 8 | Unnamed Lake #17334 | n/a | BT, RT | 2.44 acres | 9,616 |
| 9 | Unnamed Lake #17326 | n/a | BT | 1.02 acres | 9,614 |
| 10 | Tioga Lake | 2019 | BT, RT | 69.11 acres | 9,636 |
| 11 | Thimble Lake, upper | n/a | BT | 1.32 acres | 9,792 |
| 12 | Saddlebag Creek | 2019 | HT | 2 miles | 10,087 |
| 13 | Saddlebag Creek (Lee Vining Creek) | 2019 | not listed | not listed | not listed |
| 14 | Shell Lake | n/a | BT | 4.08 acres | 9,839 |
| 15 | Unnamed Lake #17311 | n/a | BT | 2.19 acres | 9,847 |
| 16 | Fantail Lake | n/a | BT | 8.61 acres | 9,922 |
| 17 | Spuller Lake | n/a | BT | 4.67 acres | 10,270 |
| 18 | Greenstone Lake | n/a | BT | 21.92 acres | 10,124 |
| 19 | Conness Lakes | n/a | GT | 0.68 acres | 10,540 |
| 20 | Conness Lakes, lower | n/a | GT | 5.37 acres | 10,540 |
| 21 | Conness Lake, middle | n/a | GT | 6.91 acres | 10,661 |
| 22 | Unnamed Lake #17283 | n/a | GT | 2.43 acres | 10,664 |

Source: CDFW, 2020a

amsl = above mean sea level; BT = brook trout, GT = golden trout, HT = hatchery trout, RT = rainbow trout
 Notes:

^a Note that the Map ID listed in this table corresponds to the label for each site on Figure 5.8-2.