



# Kern River No. 1 Hydroelectric Project FERC Project No. 1930

## Pre-Application Document Overview / Technical Study Plan Development Webinar

June 13, 2023

Please hold, we will begin shortly. Thank you for your patience and for muting your microphone.

# Welcome and Introductions

# Introductions

## Licensing Team

David Moore, SCE Licensing Manager

Martin Ostendorf, SCE Senior Manager

Daniel Keverline, SCE Senior Manager - Operations and Maintenance

Audry Williams, SCE Cultural Technical Lead

Kelly Henderson, SCE Senior Attorney

Charles Sensiba, Troutman Pepper – Outside Counsel

Ed Bianchi, Stantec Project Director

Kendra Ryan, Stantec Project Manager

# Safety Moment



# Meeting Tips

# Meeting Tips

- Please remain on mute unless called on
- Turn off camera

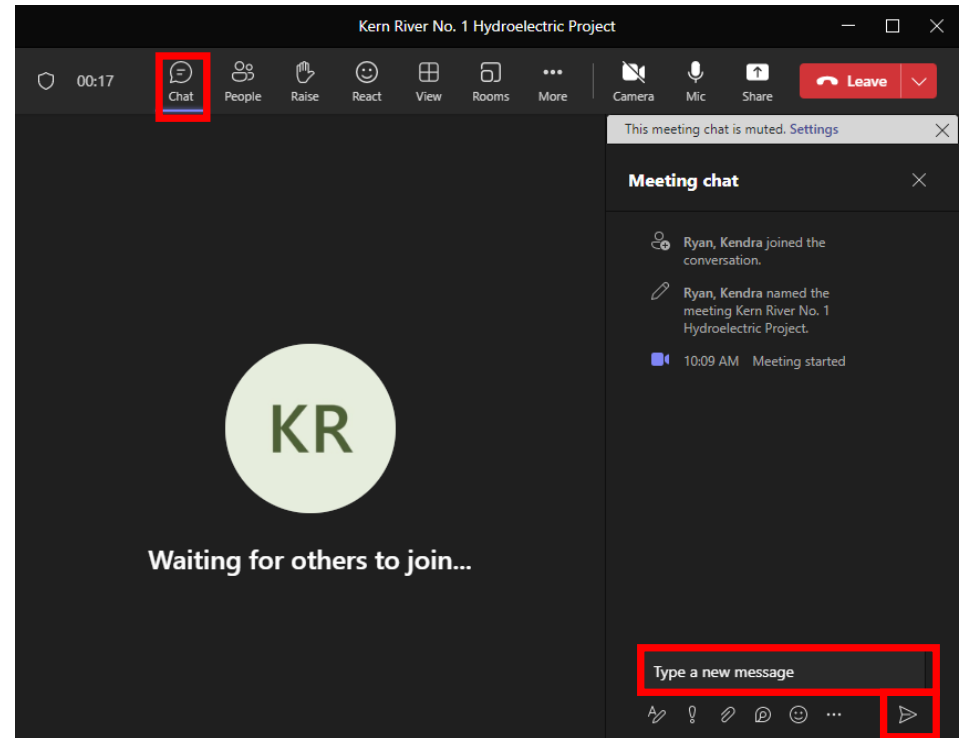


- Meeting materials are available on Project website [www.sce.com/kr1](http://www.sce.com/kr1)
- Consider shutting down other background programs for best meeting audio/viewing quality

# Meeting Tips

To submit a question/  
comment in writing:

- Utilize the chat feature during the presentation to submit questions/comments
- Questions submitted via the chat feature will be answered at the end of each agenda topic, as time allows



# Meeting Tips

To submit a question/comment verbally:

- Use the “Raise Hand” feature to indicate you would like to ask a question verbally



- Please wait to be called on and then unmute yourself
  - Introduce yourself (name and affiliation) prior to speaking
- Please stay on topic



# Agenda

- Project Overview
- FERC Relicensing Process Milestones
- Pre-Application Document Content and Organization
- Draft Technical Study Plans
- Technical Working Group Meetings
- Next Steps

# Project Overview

# Kern River No. 1 Hydroelectric Project Overview

## FERC License

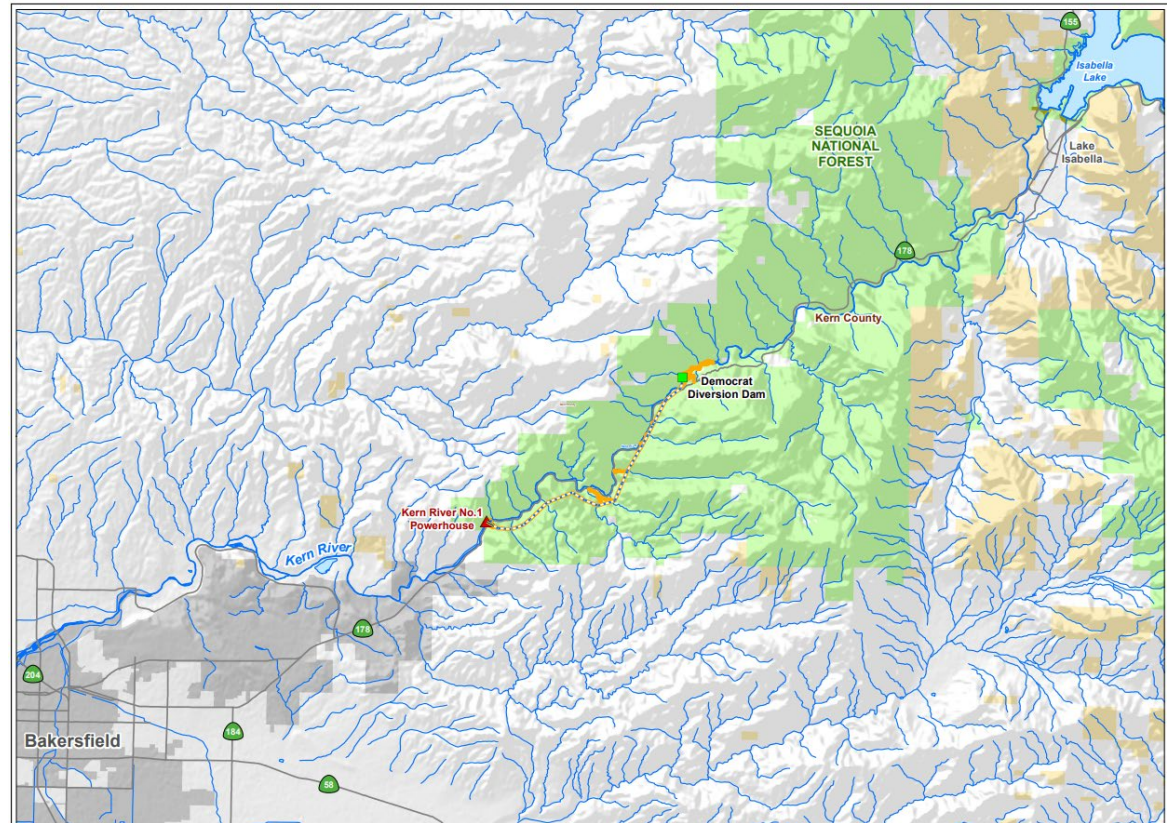
- FERC Project No. 1930
- Issued June 1998
- 30-year license term
- Expires May 31, 2028



# Kern River No. 1 Hydroelectric Project Overview

## Project Location

- Western slope of the Sierra Nevada in Kern County
- Approximately 15 miles east of City of Bakersfield
- Project occupies federal lands within the Sequoia National Forest





# Kern River No. 1 Hydroelectric Project Overview

## Project Facilities

### Democrat Dam

- Operations - run-of-river
- Located - 10.2 miles upstream of powerhouse
- 58-foot-high concrete overflow gravity dam
- Crest is 204 feet long and serves as spillway
- Not a high hazard dam



# Kern River No. 1 Hydroelectric Project Overview

## Project Facilities

### Democrat Dam Impoundment

- 27 surface acres
- 247 acre-feet (af) gross storage capacity
- No usable storage
- Water diverted into intake structure with combined capacity of 412 cubic feet per second (cfs)



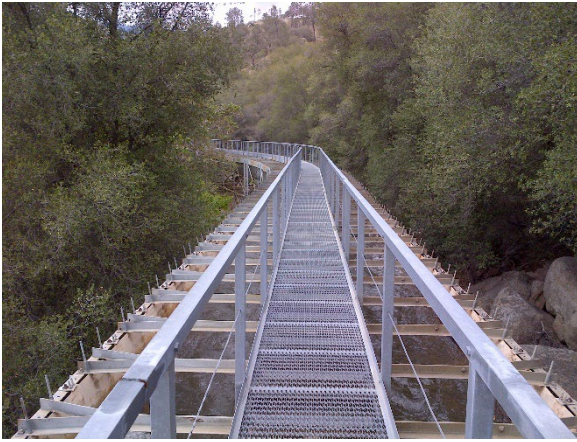


# Kern River No. 1 Hydroelectric Project Overview

## Project Facilities

### Conveyance System

- 8.5 miles long
- Consists of sandbox, flumes, tunnels, adits, conduits, forebay, forebay overflow spillway, and penstock



Flume



Covered Conduit



Forebay Spillway Pipe

# Kern River No. 1 Hydroelectric Project Overview

## Project Facilities

### Powerhouse

- 4 impulse turbines
- Total installed capacity 26.3 MW
- Tailrace is impounded by Kern Canyon Project (FERC Project No. 178) diversion pool (non-Project facility)





# Kern River No. 1 Hydroelectric Project Overview

## Other Project Facilities

Project Access Roads and Project Trails

Communication and Power Lines

Gaging Stations

- Kern River near Democrat Springs - located 0.4 mile downstream of Democrat dam
- Kern River No. 1 Conduit near Democrat Springs - located on flowline near Cow Flat Creek
- Kern River near Democrat Springs + Conduit - data computed by combining the data collected in the bypass reach and the flowline (inflow)

Powerhouse and Forebay Operations Facilities

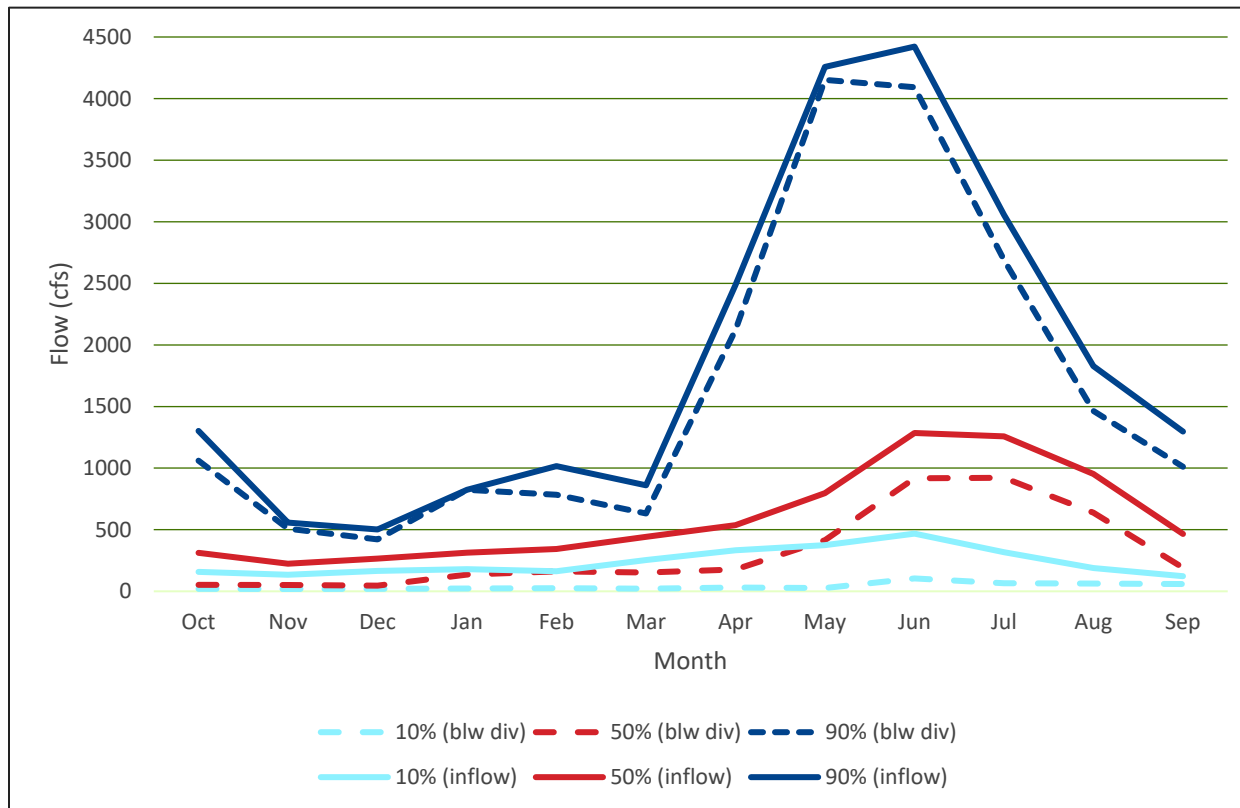
# Kern River No. 1 Hydroelectric Project Overview

## Project Operations

- Inflow controlled by USACE reservoir operations at Isabella Dam (non-Project facility)
  - Releases scheduled by Kern River Watermaster
- Amount and timing of diversions are a function of Lake Isabella releases, water rights, flowline and powerhouse capacities, and MIFs requirements
- Project diversion rights of up to 412 cfs
- Minimum instream flow (MIF) requirements:
  - June 1 – September 30 - 50 cfs release or inflow, whichever is less
  - October 1 – May 31 - 15 cfs release or inflow, whichever is less

# Kern River No. 1 Hydroelectric Project Overview

## Monthly Exceedance Inflow and Flow in the Bypass Reach (WY 1999–2021)



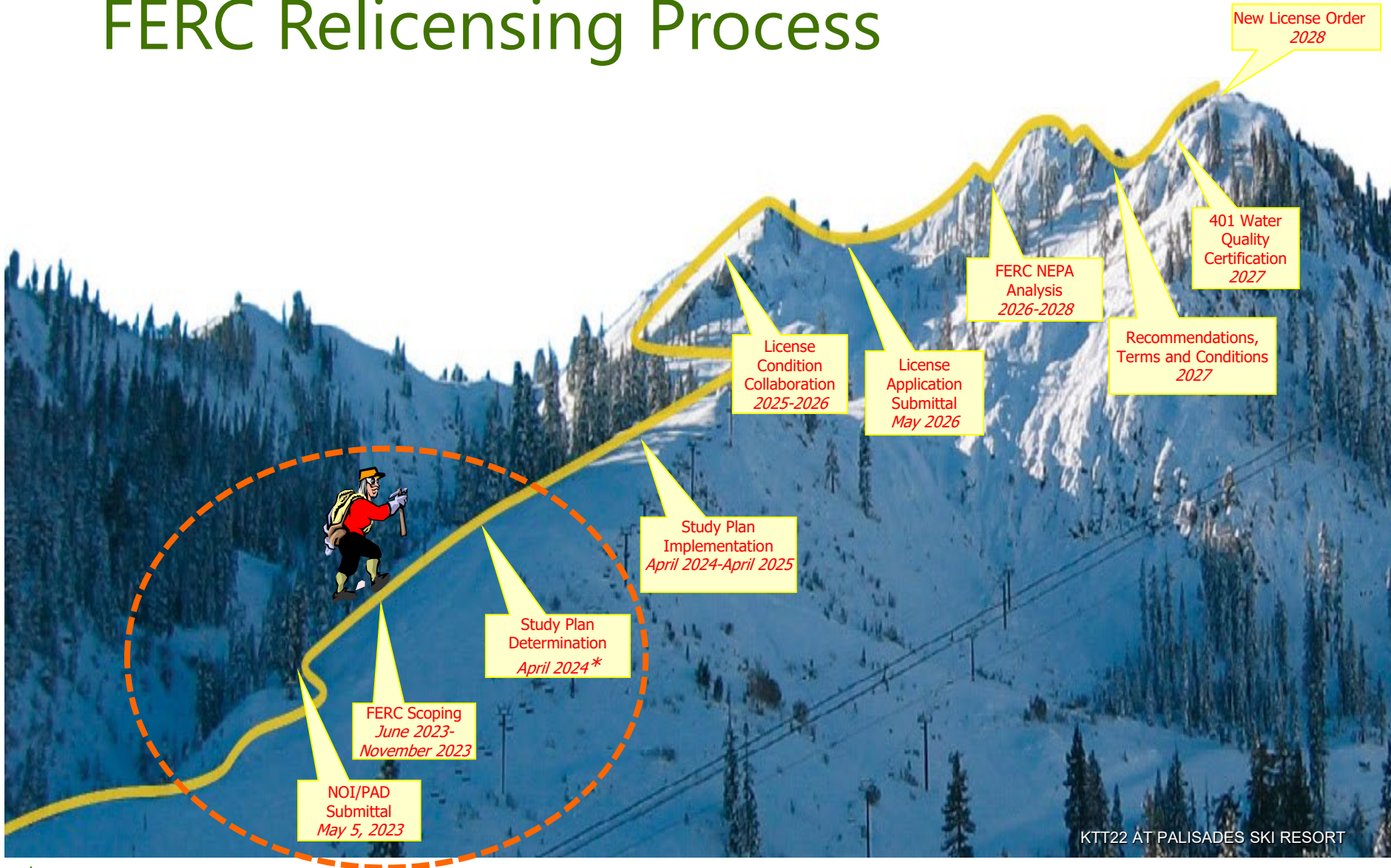
# Kern River No. 1 Hydroelectric Project Overview

## Project Maintenance

- Powerhouse inspection and maintenance daily
- Water conveyance system inspection monthly and after large storm events
- Dam inspections and maintenance monthly
- Sediment management at Democrat Dam Impoundment
- Woody debris removal at Democrat Dam intakes
- Vegetation management - trimming by hand, removal of hazard trees, and herbicide application
- Pest management – interior of Project facilities
- Road and trail maintenance
- Power and communication line maintenance

# FERC Relicensing Process Milestones

# FERC Relicensing Process



KTT22 AT PALISADES SKI RESORT

\* If no study plan disputes.

# FERC Study Plan Development Process

Applicant includes list of potential studies in PAD (*May 2023*)

60 days ↓ ← — *Initial Tribal Consultation Meeting*

FERC issues Notice of Commencement and Scoping Doc 1 (*July 2023*)

60 days ↓ ← — *Public Scoping Meeting and Site Visit*

Stakeholders file comments on PAD/Scoping Doc 1 and study requests (*Sept. 2023*)

45 days ↓

Applicant files Proposed Study Plan (*November 2023*)

90 days ↓ ← — *Initial Study Plan Meeting*

Stakeholders file comments on Proposed Study Plan (*Feb. 2024*)

30 days ↓

Applicant files Revised Study Plan (*March 2024*)

30 days ↓ ← — *Stakeholders File Comments (15 days)*

FERC issues Study Plan Determination (*April 2024*)

← — *Formal Dispute Process, if needed*

Process takes approximately 10-14 months

# Pre-Application Document (PAD) Content and Organization



# PAD Content and Organization

## SOUTHERN CALIFORNIA EDISON COMPANY

### Kern River No. 1 Hydroelectric Project FERC Project No. 1930

#### VOLUME 1: SECTIONS 1–5 (BOOK 1 OF 2)



#### PRELIMINARY APPLICATION DOCUMENT



May 2023

#### TABLE OF CONTENTS

##### Volume 1 (Public Information)

- 1.0 Introduction
- 2.0 Existing Project Location, Facilities, and Operations
- 3.0 Existing Resource Information
  - 3.1 Introduction
  - 3.2 General Description of the River Basin
  - 3.3 Water Use and Hydrology
  - 3.4 Water Quality
  - 3.5 Fish and Aquatic Resources
  - 3.6 Botanical and Wildlife Resources
  - 3.7 Geology and Soils
  - 3.8 Geomorphology
  - 3.9 Floodplains, Littoral Zones, and Associated Wetland and Riparian Habitats
  - 3.10 Land Use
  - 3.11 Recreation Resources
  - 3.12 Aesthetics
  - 3.13 Cultural Resources
  - 3.14 Tribal Resources
  - 3.15 Socioeconomics
- 4.0 Preliminary Issues, Draft Technical Study Plans, and Relevant Plans
- 5.0 Summary of Contacts

- Appendix A: Relicensing Process Plan
- Appendix B: Summary of Contacts
- Appendix C: Draft Technical Study Plans

# PAD Content and Organization

CUI//PRIV

## SOUTHERN CALIFORNIA EDISON COMPANY

Kern River No. 1 Hydroelectric Project  
FERC Project No. 1930

### VOLUME 2: PRIVILEGED INFORMATION



PRELIMINARY APPLICATION DOCUMENT



May 2023

### Volume 2 (Privileged Information) CUI//PRIV

#### Terrestrial Resources

- Map 3.6-2a-c Special-Status Plant Species Known to Occur within 1 Mile of the Kern River No. 1 Hydroelectric Project FERC Boundary (Confidential)
- Map 3.6-3a-c Special-Status Wildlife Species Known to Occur within 1 Mile of the Kern River No. 1 Hydroelectric Project FERC Boundary (Confidential)
- Map 3.6-4 Known Occurrences and Proposed Critical Habitat for the Kern Canyon Slender Salamander (Confidential)
- Map 3.6-5 Known Occurrences and Proposed Critical Habitat for the Relictual Slender Salamander (Confidential)

#### Cultural Resources

- Map 3.13-3. Overview of Previously Recorded Cultural Resources within the Study Area (Confidential)
- Maps 3.13-3a-g. Previously Recorded Cultural Resources within the Study Area—Detailed Map Series (Confidential)

# PAD Availability

Public portions of the PAD available here:

- SCE's relicensing website: [www.sce.com/kr1](http://www.sce.com/kr1)
- FERC's eLibrary: <https://elibrary.ferc.gov/eLibrary/search>
  - Docket No. P-1930
- By appointment at the Kern River No. 3 Powerhouse, located at 15115 Sierra Way, Kernville, CA 93238
  - Contact Daniel Keverline to schedule at appointment at [daniel.keverline@sce.com](mailto:daniel.keverline@sce.com)

# Draft Technical Study Plans

# Draft Technical Study Plans

PAD Appendix C includes 13 Draft Technical Study Plans –

## Aquatic Resources

AQ 1 – Hydrology  
AQ 2 – Water Quality / Water Temperature  
AQ 3 – Fish Population

## Recreation Resources

REC 1 – Recreation Facility Condition Assessment  
REC 2 – Recreation Facility Use Assessment  
REC 3 – Whitewater Boating

## Cultural Resources

CUL 1 – Built Environment  
CUL 2 – Archaeology  
TRI 1 – Tribal

## Terrestrial Resources

TERR 1 – Botanical  
TERR 2 – Wildlife

## Land Resources

LAND 1 – Road and Trail Condition Assessment  
LAND 2 – Erosion and Sedimentation

# Draft Technical Study Plans

- Draft Technical Study Plan Content
  - Potential Resource Issue(s)
  - Project Nexus
  - Relevant Information
  - Potential Information Gaps
  - Study Objectives
  - Extent of Study Area
  - Study Approach
  - Reporting
  - Schedule

# Technical Working Group Meetings

# Technical Working Group Meetings

- Resource-specific Technical Working Group (TWG) meetings to discuss Draft Technical Study Plans (TSP) (June – September 2023)
- Goals of TWG meetings are to:
  - Review and refine, as appropriate, each TSP with interested stakeholders (prior to rigorous ILP review timeline)
  - Avoid potential dispute resolution process
- Participants are requested to review the draft TSPs included in the PAD prior to first TWG



# Technical Working Group Meetings

- TWG meetings organized by resource area
- All meetings are virtual
- Meetings scheduled for 2 hours
- The proposed meeting schedule could be modified based on stakeholder interest and participation
- Sign-up for TWGs on the Project website at [www.sce.com/kr1](http://www.sce.com/kr1)

# Technical Working Group Meetings

- After the meetings
  - 10-day stakeholder comment period
  - SCE addresses comments, as appropriate, and provides track change Word version one week prior to next meeting
  - TWG participants complete review and provide questions/comments at next meeting

# Technical Working Meeting Schedule

Technical Study Plan	Week Starting											
	26-June	3-July	10-July	17-July	24-July	31-July	7-Aug	14-Aug	21-Aug	28-Aug	4-Sep	
<b>Aquatic Resources</b>												
AQ 1 – Hydrology		July 7 10 am- 12 pm				July 31 1-3 pm			Aug 24 1-3 pm			
AQ 2 – Water Quality/Water Temperature												
AQ 3 – Fish Population												
<b>Cultural Resources</b>												
CUL 1 – Built Environment					July 27 1-3 pm					Aug 29 1-3 pm		
CUL 2 – Archaeology	June 29 1-3 pm											
TRI 1 – Tribal												
<b>Land Resources</b>												
LAND 1 – Road and Trail Condition Assessment	June 28 1-3 pm				July 26 1-3 pm				Aug 23 1-3 pm			
LAND 2 – Erosion and Sedimentation												
<b>Recreation Resources</b>												
REC 1 – Recreation Facility Condition Assessment			July 12 1-3 pm				Aug 10 1-3 pm				Sep 6 1-3 pm	
REC 2 – Recreation Facility Use Assessment												
REC 3 – Whitewater Boating												
<b>Terrestrial Resources</b>												
TERR 1 – Botanical			July 11 1-3 pm				Aug 8 1-3 pm				Sep 7 1-3 pm	
TERR 2 – Wildlife												
	TWG #1			TWG #2				TWG #3*				

\* Contingency meeting if needed.

The proposed meeting schedule could be modified based on stakeholder interest and participation.

# How to Stay Involved

- Check the Project website for updates/news at [www.sce.com/kr1](http://www.sce.com/kr1)
- Sign up to receive Project-related e-mails through the Contact Registration Form on the Project website
- Sign up for Technical Working Group meetings on the Project website
- Sign up for FERC's e-subscription (Docket No. P-1930) at [www.ferc.gov](http://www.ferc.gov)
- E-mail Kendra Ryan with questions at: [Kendra.ryan@stantec.com](mailto:Kendra.ryan@stantec.com)

# Questions?



# Next Steps