

Lee Vining Hydroelectric Project

FERC No. 1388

Cultural and Tribal Resources
Technical Working Group Meeting
April 19, 2023

Welcome and Land Acknowledgment

SCE would like to take a moment and recognize that the Lee Vining Project is located on the Mono Lake Kutzadikaa Tribes' traditional lands, which they have stewarded for generations.

Safety Moment



Agenda

- Welcome & Introductions
 - Land Acknowledgement
 - Safety Moment
 - Introductions
 - Meeting goals
- Review Project and Relicensing Process
 - Project overview
 - Review relicensing process
 - Review study implementation schedule
- Discuss 2022 Implementation and 2023 Plans
- Schedule, Next Steps, Action Items
 - Relicensing Project Schedule
 - Other action items
- Final Questions

Lee Vining Relicensing Team

SCE Team

Matthew Woodhall
Project Manager

Martin Ostendorf
Senior Manager

Audry Williams
Senior Archeologist,
Cultural/Tribal TWG Lead

Seth Carr
Operations Manager

Consultant Team

Shannon Luoma
Project Manager

Lynn Johnson
Tribal Lead

Finlay Anderson
Technical Advisor

Barb Siskin and Jay King
Cultural Leads

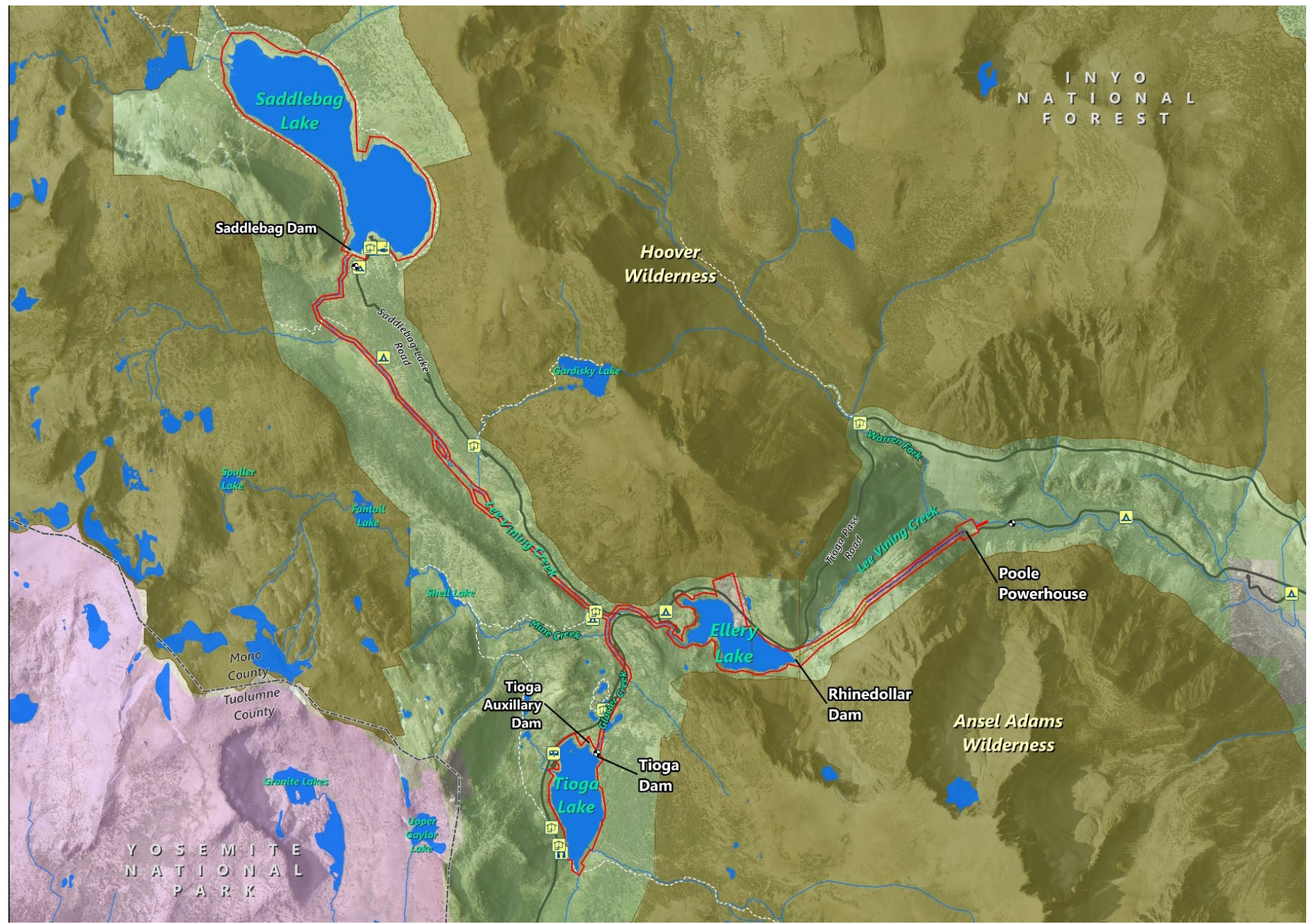
Kelly Larimer
Project Director

Carissa Shoemaker
TWG Coordinator

Confidential/Sensitive Information Disclaimer

- We are aware that sensitive issues may be discussed during this meeting, TWGs are open to all people but we believe this to be a safe place to share
- We welcome suggestions on how to include confidential or sensitive information
- If there is information that you'd rather not discuss here, please contact Audry Williams audry.williams@sce.com

LEE VINING HYDROELECTRIC PROJECT REFRESHER



I N Y O
N A T I O N A L
F O R E S T

Saddlebag Dam

Hoover
Wilderness

Spuller
Lake

Fantail
Lake

Shell
Lake

Mono
County
Tuolumne
County

Granite
Lakes

Upper
Gaylor
Lake

Y O S E M I T E
N A T I O N A L
P A R K

Tioga
Auxillary
Dam

Tioga
Dam

Tioga
Lake

Ellery
Lake

Rhinedollar
Dam

Ansel Adams
Wilderness

Poole
Powerhouse



Lee Vining Project in relation to Mono Lake

Lee Vining Hydroelectric Project

- Federal Energy Regulatory Commission (FERC) License
 - FERC Project No. 1388
 - Issued February 1997
 - 30-year license term
 - Expires January 31, 2027
- Key Outcomes from Previous Relicensing
 - Established minimum release flows with Project operations (i.e., generation) while protecting aquatic resources
 - Conducted focused studies/evaluation on key resource topics
 - Established resource protection measures



Lee Vining Hydroelectric Project

- Located in the eastern slope of the Sierra Nevada primarily on Inyo National Forest lands about 9 miles upstream of Lee Vining, CA
- Situated on Lee Vining Creek, in Mono County
- The Project maintains 3 reservoirs and 4 dams:
 - Saddlebag Dam and Lake
 - Tioga Dam, Auxiliary Dam, and Lake
 - Rhinedollar Dam and Ellery Lake



Aerial Overview of Lee Vining Project Area

Project Facilities

- Saddlebag Dam and Lake
 - Headwaters of Lee Vining Creek
 - 297-acre reservoir
- Tioga Dams and Lake
 - Headwaters of Glacier Creek
 - 2 dams: Main and Auxiliary
 - 73-acre reservoir
- Rhinedollar Dam and Ellery Lake
 - Tioga and Saddlebag drain into here
 - 61-acre reservoir
- Poole powerhouse
 - 11.25 megawatts
- Flowline and penstock connect in Ellery Lake and Poole Powerhouse

See the project description sheet for more details



Regulatory & Process - Look Back

- SCE is utilizing the Traditional Licensing Process (TLP)
 - The Federal Energy Regulatory Commission (FERC) does not engage until end of process
 - Less structured “formal” milestone schedule around studies
- Study Plans were developed in collaboration with Technical Work Group (TWG) members:
 - 12+ TWG meetings January-May 2021
- Notice of Intent (NOI) and Preliminary Application Document (PAD) filed August 2021
- Site Visit and Joint Agency Meeting – Fall 2021
- Study Plan revisions – February 2022
- Final Study Plans filed – April 2022
- Some studies began in 2022, continuing into 2023
- Tech Memos distributed January 23, 2023
- Tech Memos filed March 31, 2023 (available on SCE website)

Regulatory & Process - Look Ahead

- Focused TWG meetings for select resources prior to 2023 field season as needed
- Select draft technical reports for completed studies to be distributed spring 2023 for 60-day review*
- 2023 field season
- Draft technical reports for remaining studies to be distributed fall 2023 and spring 2024 for 60-day review*
- Draft License Application due to FERC September 2024
 - Will include final technical reports
- Final License Application due to FERC January 2025
- Lee Vining license expires January 2027

* *Confidential Cultural and Tribal Reports will only be shared with appropriate individuals*

Study Implementation Schedule

Study Plan Title	Year(s) of Implementation
Cultural Resources (CUL-1)	2022-2023
Tribal Resources (TRI-1)	2023
Stream and Reservoir Water Quality (WQ-1)	2022-2023
Reservoir Fish Populations (AQ-1)	2022
Stream Fish Populations (AQ-2)	2022
Aquatic Habitat Mapping and Sediment Characterization (AQ-3)	2023
Aquatic Invasive Plants (AQ-4)	2023
Operations Model (AQ-5)	2022-2023
Lower Lee Vining Creek Channel Morphology (AQ-6)	2022-2023
Botanical Resources Survey (TERR-1)	2022-2023
Wildlife Resources Survey (TERR-2)	2022-2023
Recreation Use Assessment (REC-1)	2022-2023
Existing Recreation Facilities Condition Assessment (REC-2)	2022-2023
Project Lands and Roads (LAND-1)	2023
Visual Resource Assessment (LAND-2)	2023

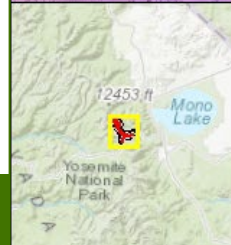
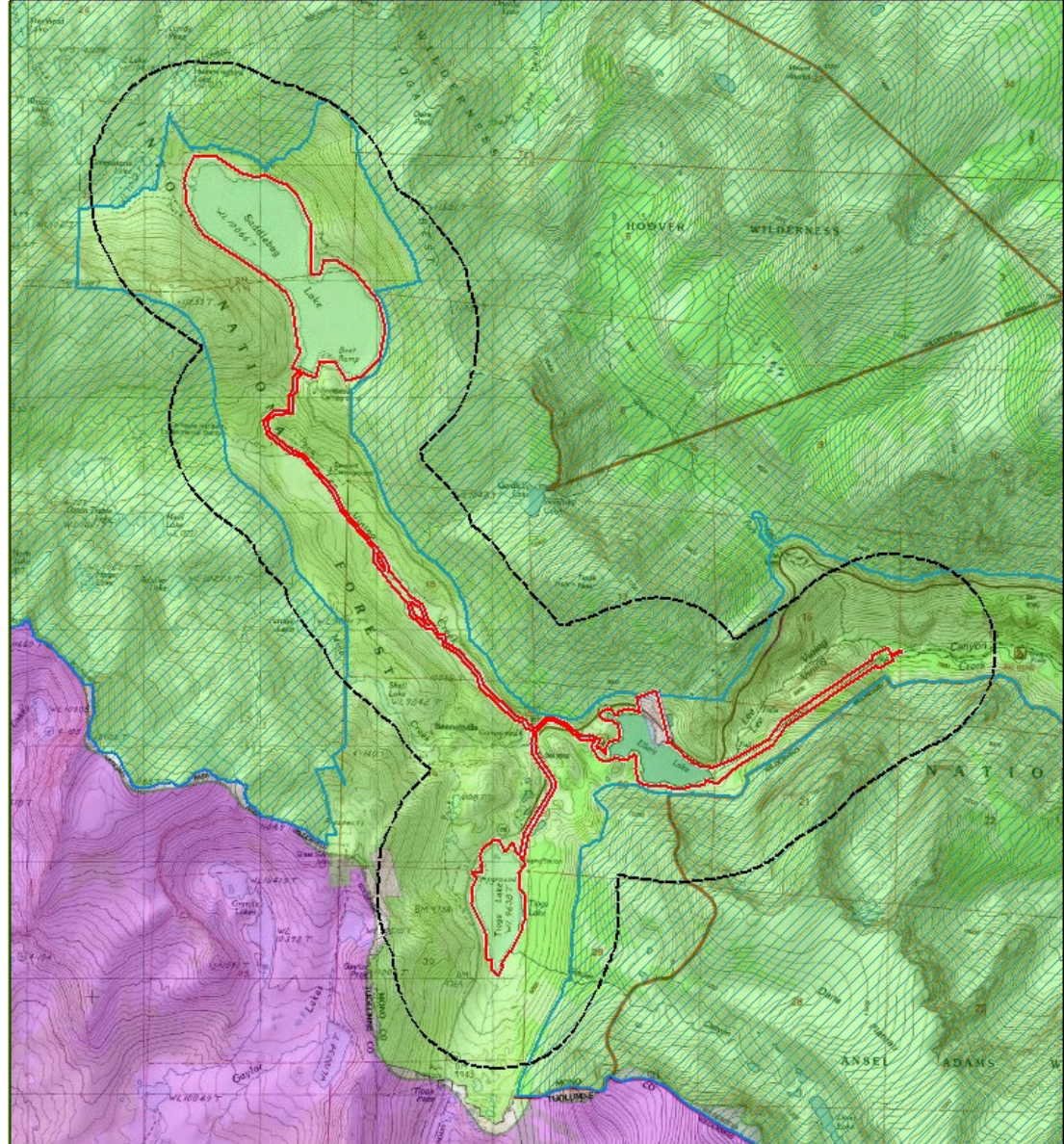
Questions?



2022 Implementation

Cultural Resources (CUL-1)

Area of Potential Effects (APE) and Study Area Map



- Proposed APE
- Proposed Cultural Study Area
- Inyo National Forest (INF)
- Non-INF
- Wilderness Area (INF)
- Yosemite National Park

SOUTHERN CALIFORNIA EDISON
 'Energy for What's Ahead'

Service Layer Credits: Sources: Esri, HERE, Garmin, Intermap, increment IP Corp., GEBCO, USGS, FAO, NPS, NRCAN.

0 0.2 0.4 0.8 Miles

Proposed Cultural Study Area and Proposed APE

Lee Vining
 Hydroelectric Project
 FERC Project No. 1388

Cultural Resources (CUL-1)

- Goals/objectives
 - Meet FERC and Section 106 compliance requirements by determining if Project-related activities and public access will have an adverse effect on historic properties
 - Identify all archaeological resources, built-environment resources, and Traditional Cultural Resources (TCRs) within the APE; determine which are historic properties; and develop the Historic Properties Management Plan (HPMP) based on those results
 - Ensure that future Project facilities and operations are consistent with the desired conditions described in the Land Management Plan for the Inyo National Forest

Cultural Resources (CUL-1)

- Preliminary data summary
 - Completed background research in summer 2022
 - Surveyed APE in July and August 2022
 - Submitted draft reports to SCE and USFS in Q1 2023, will distribute to the rest of TWG with the Tribal Report in Q2 2024
 - Archaeology: recorded 20 resources (16 new), mostly historic-period, including 6 with built environment elements
 - Built Environment: recorded 32 resources, including 13 elements of LVHP; Tioga Pass Resort; Saddlebag Lake Resort; Saddlebag Wilderness Cabin; Tioga Road

Cultural Resources (CUL-1)

- Preliminary data summary: National Register of Historic Places (NRHP) Eligibility
 - All archaeological resources recommended NRHP ineligible except 3 remaining unevaluated: 2 precontact lithic scatters and a submerged road segment
 - All built environment resources recommended NRHP ineligible, including LVHP, except two buildings individually eligible (Poole Powerhouse, Triplex Cottage)
 - Evaluation/treatment options to be developed in HPMP

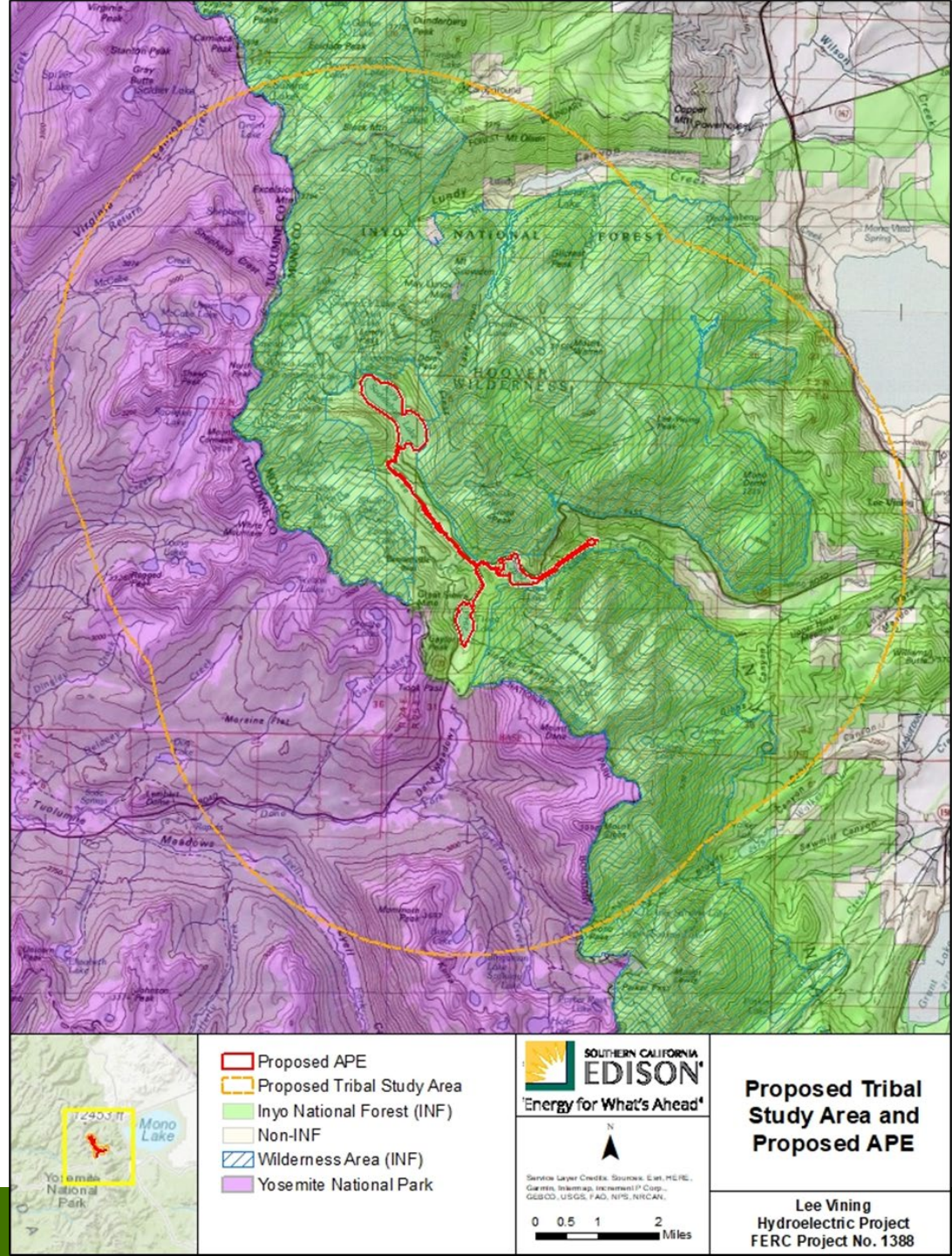
Cultural Resources (CUL-1)

Next Steps

Date	Activity
2023–Spring/Fall	Conduct archaeological site evaluations
2023/2024–Winter	Prepare archaeological site evaluation report
2024–Spring	Distribute draft report to stakeholders for review and comment
2024–Summer	Resolve comments and prepare draft final report
2024–Spring/Summer	Prepare draft HPMP
2024–September	Distribute final reports and HPMP in Draft License Application

Tribal Resources (TRI-1)

APE and Study Area Map



Tribal Resources (TRI-1)

- Methods
 - Archival research
 - Assist other resource specialists
 - Meetings with Tribal governments
 - Interviews
 - Documentation and evaluation
 - Reporting and Historic Properties Management Plan
- 2022 Data Summary
 - Background research was conducted in 2022, study will commence in 2023 with interviews

Tribal Resources (TRI-1)

Next Steps

Date	Activity
2023–Summer/Fall	Conduct Tribal site visits; identification and evaluation of Tribal resources
2023/2024–Winter	Prepare draft TRI-1 Study Report
2024–Spring	Distribute draft report to stakeholders for review and comment
2024–Spring	Prepare draft Tribal resource HPMP for review and comment
2024–Summer	Resolve comments and prepare final reports
2024–September	Distribute final reports and HPMP in Draft License Application

Questions?



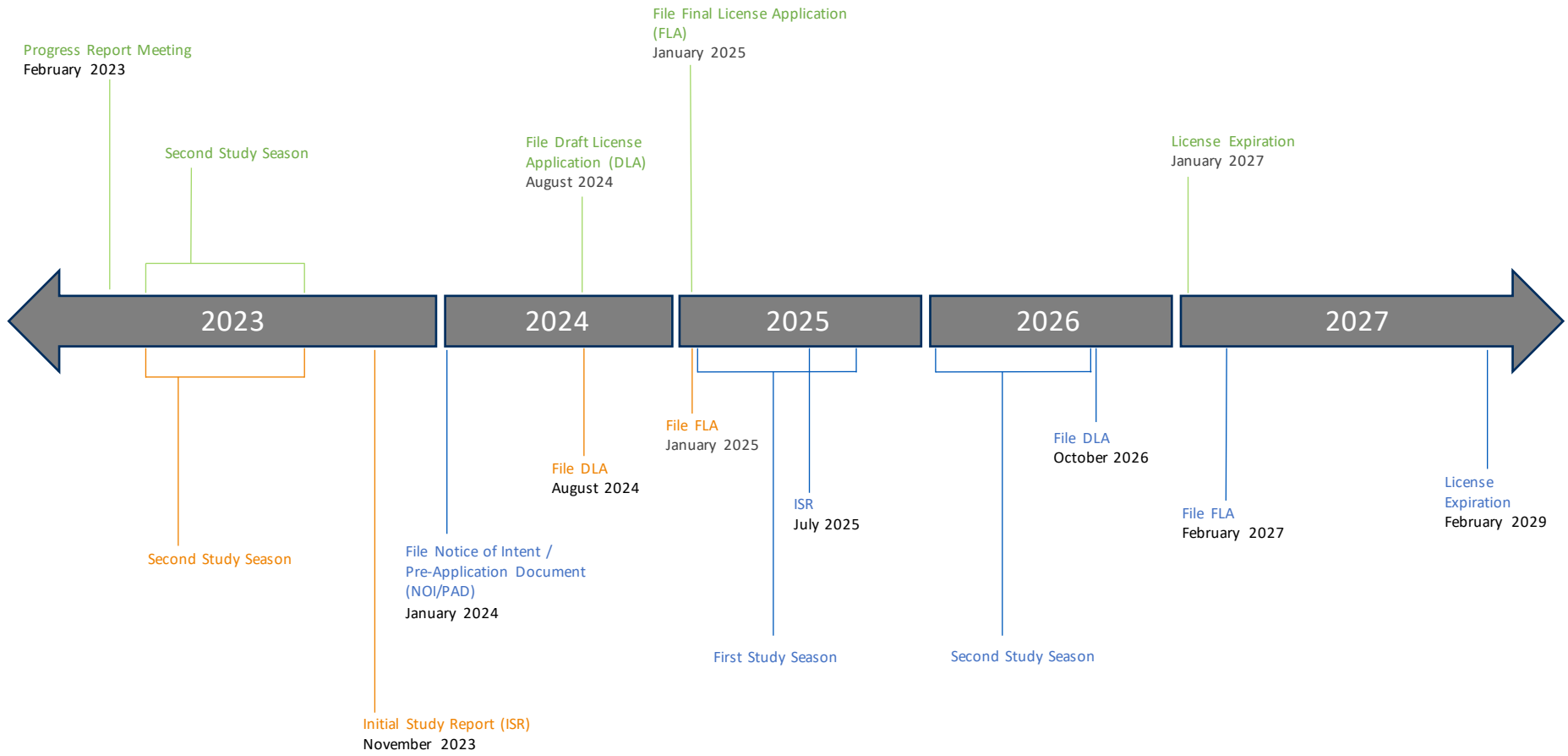
RELICENSING SCHEDULE OVERVIEW

Relicensing Process Schedule

Date	Activity
Spring – Fall 2023	2023 field studies
Spring 2023	Select Technical Reports <ul style="list-style-type: none"> • Stream and Reservoir Water Quality Study (WQ-1) • Reservoir Fish Population Study (AQ-1) • Stream Fish Populations Study (AQ-2) • General Botanical Resources Survey (TERR-1)
Fall 2023	<ul style="list-style-type: none"> • Operations and Hydrology Model (AQ-5)
Spring 2024	Remaining Technical Reports <ul style="list-style-type: none"> • Aquatic Habitat Mapping and Sediment Characterization (AQ-3) • Aquatic Invasive Plants Survey (AQ-4) • Lower Lee Vining Creek Channel Morphology (AQ-6) • General Wildlife Resources Survey (TERR-2) • Project Lands and Roads Assessment (LAND-1) • Visual Resource Assessment (LAND-2) • Recreation Use Assessment (REC-1) • Facilities Condition Assessment (REC-2) • Cultural Resources (CUL-1) • Tribal Resources (TR-1)
September 2024	SCE Files Draft License Application
January 2025	SCE Files Final License Application

How to Stay Involved

- Check the Project website for updates/news at www.sce.com/leevining
- You can view other SCE relicensing Projects at www.sce.com/regulatory/hydro-licensing
- Sign-up to receive Project-related emails through the Contact Registration Form/Project Questionnaire on the Project website
- Participate in an ongoing TWG
- Sign up for FERC's for e-subscription (docket number "P-1388") at www.ferc.gov
- Email Carissa Shoemaker carissa.shoemaker@erm.com or Audry Williams with questions



Legend

- Lee Vining Relicensing Milestones
- Lundy Relicensing Milestones
- Rush Creek Relicensing Milestones

Final Questions?



Thank you!