

# Kaweah Project

## FERC Project No. 298

### Technical Study Plan Kick-off Meeting

March 1, 2018

# Agenda

- Welcome and introductions
- Project overview
- Relicensing process overview
- Technical study implementation
- Proposed meetings/communication
- Annual reporting/meetings
- Key contacts
- Adjourn

# Project Overview

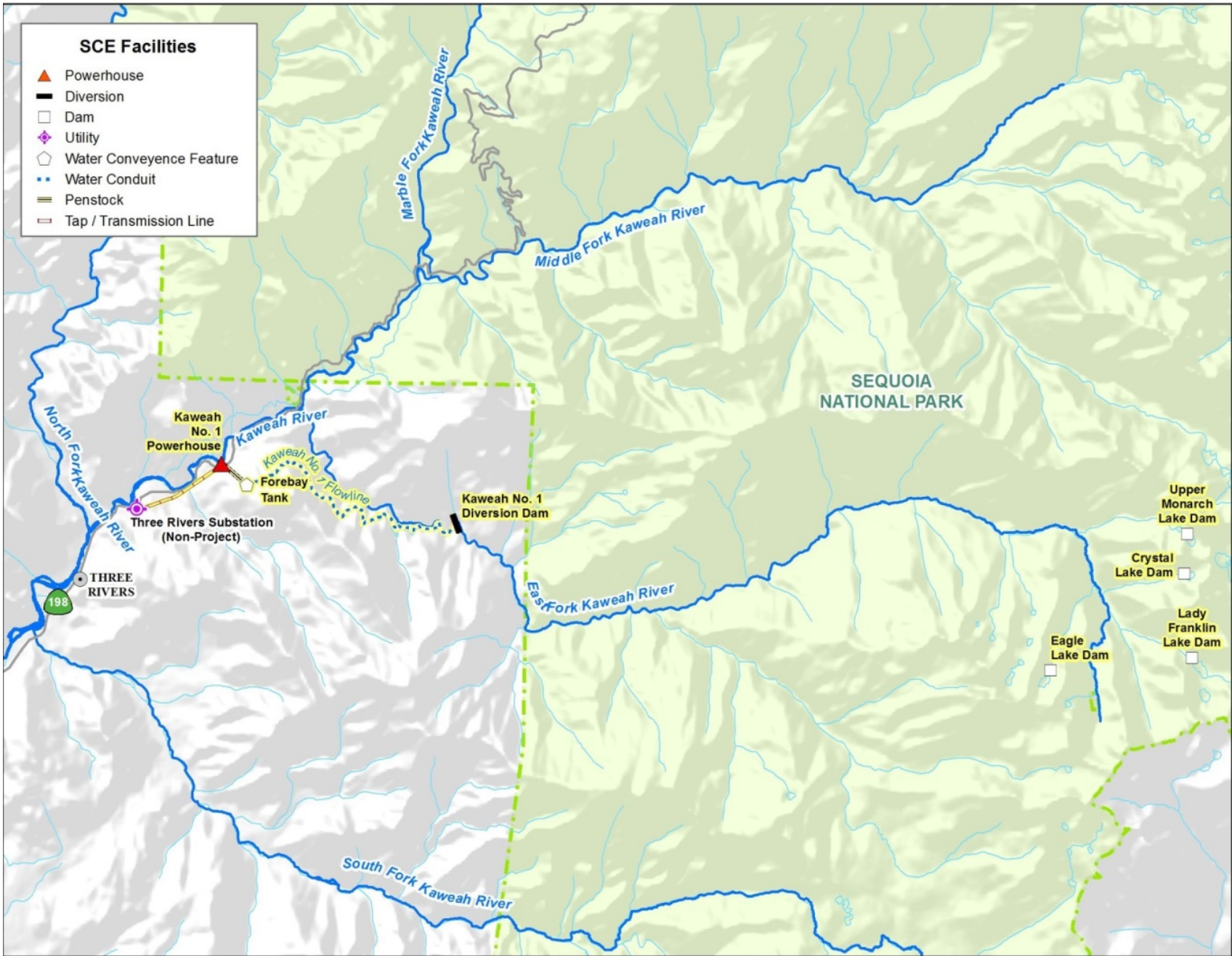
- Jurisdiction
  - Federal Energy Regulatory Commission (FERC) – Kaweah Project (FERC Project No. 298)
  - Sequoia National Park – Kaweah Project on Sequoia premises

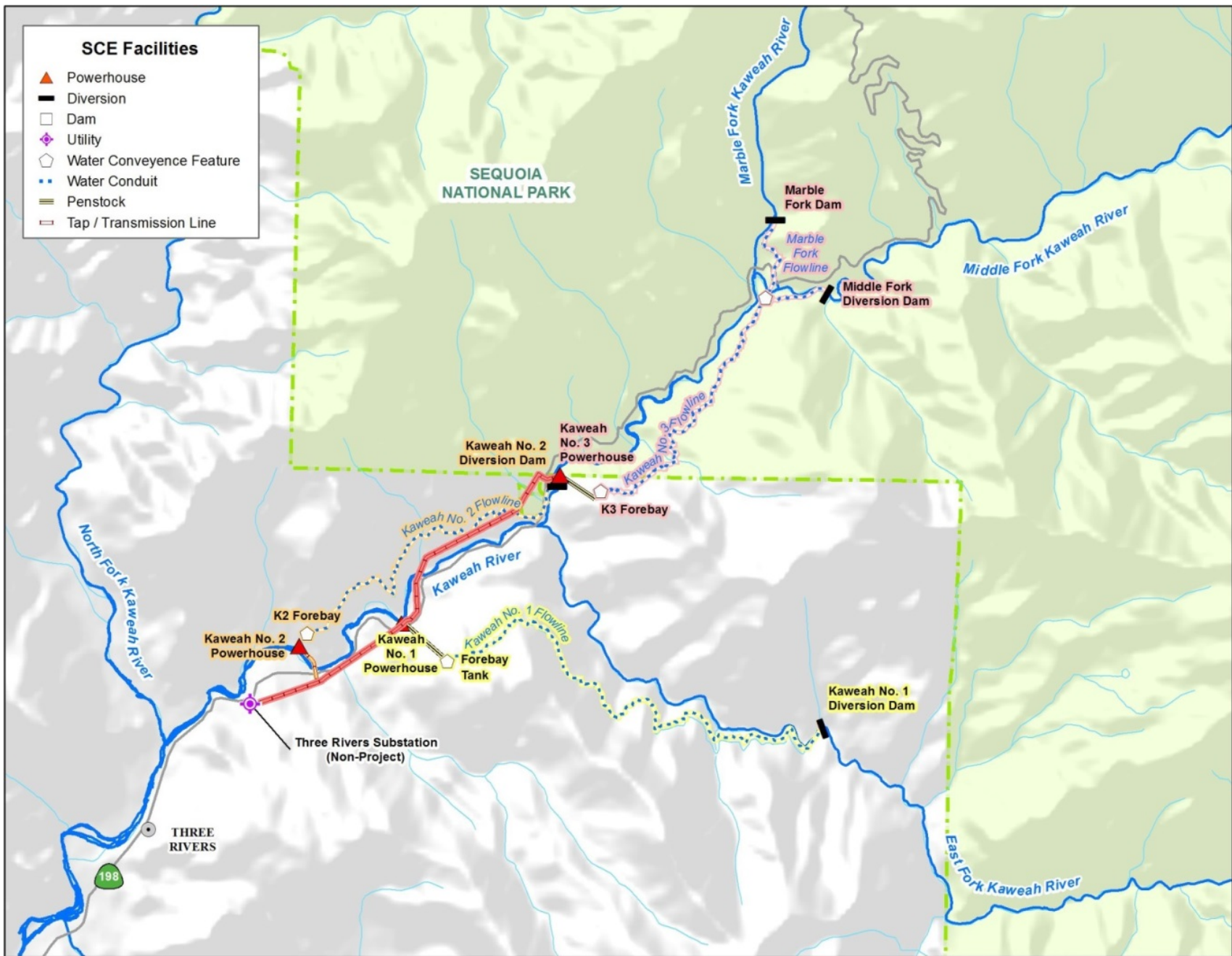


Middle Fork Kaweah River  
Kaweah No. 3 Flume

Kaweah No. 3 Powerhouse/Switchyard

Kaweah No. 2 Diversion Dam and Intake





# Project Overview

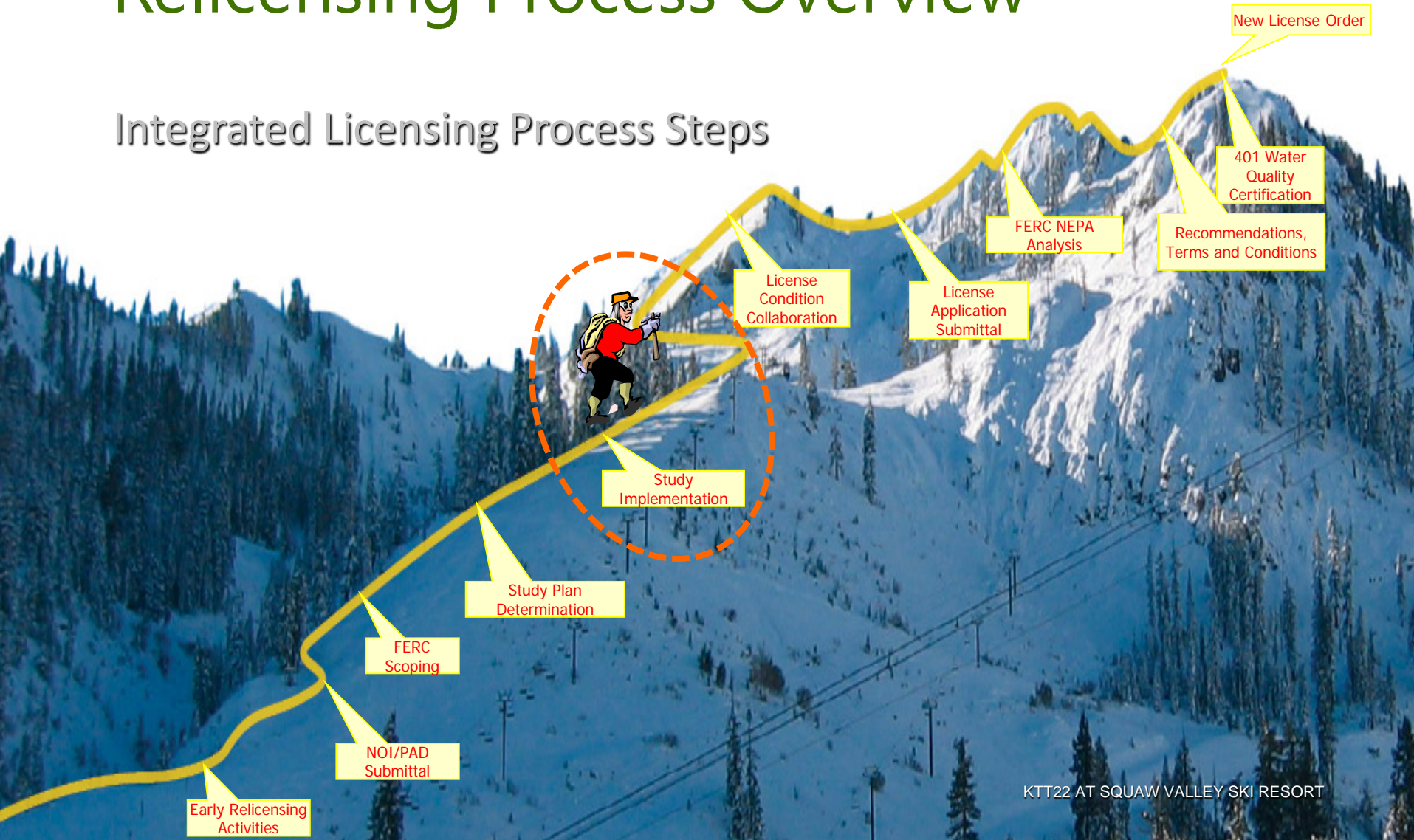
- FERC Project Developments
  - Current license expires December 31, 2021
  - Generator nameplate capacity of 8.85MW
  - Located in Tulare County (Bureau of Land Management and private land)
  - Project elements
    - Portions of Kaweah No. 1 Development
    - Kaweah No. 2 Development
    - Portions of Kaweah No. 3 Development

# Project Overview

- Non-FERC Project Developments
  - Located in Sequoia National Park
  - Operated under Special Use Permit (SUP)
  - SUP expires September 8, 2026
  - No generating facilities
  - Project elements
    - Portions of Kaweah No. 1 Development (Mineral King Dams)
    - Portions of Kaweah No. 3 Development (Marble Fork and Middle Fork Diversions)

# Relicensing Process Overview

## Integrated Licensing Process Steps





# Relicensing Process Overview

- Study Plan approved November 14, 2017

<b>FERC Regulation 18 CFR §</b>	<b>Responsible Party</b>	<b>Action</b>	<b>Date</b>
5.15(a)	SCE	First Study Season	2018
5.15(c)(1)	SCE	Initial Study Report	10/25/18
5.15(c)(2)	SCE/Stakeholders	Initial Study Report Meeting	11/9/18
5.15(c)(3)	SCE	Initial Study Report Meeting Summary	11/24/18
5.15(c)(4)–(6)	Stakeholders	Disputes/Requests to Amend Study Plans (if needed)	12/4/18 – 2/22/19

- Second Year Study Season = 2019
- Draft License Application = August 2019
- Final License Application = December 2019

# Technical Study Implementation

## Aquatics

AQ-1 Instream Flow

AQ-2 Fish Population

AQ-3 Macroinvertebrates

AQ-4 Water Temperature

AQ-5 Geomorphology

AQ-6 Water Quality

AQ-7 Special-status Amphibians  
and Aquatic Reptiles

AQ-8 Fish Passage

AQ-9 Entrainment

## Cultural

CUL-1 Cultural Resources

## Land

LAND-1 Transportation System

LAND-2 Aesthetic Resources

LAND-3 Land Use

## Recreation

REC-1 Recreation Resources

REC-2 Whitewater Boating

## Terrestrial

TERR-1 Botanical Resources

TERR-2 Wildlife Resources

# Technical Study Implementation

- Each study plan contains specific consultation requirements which may include:
  - Resource/agency specific requests for information or concurrence on study area/approach if not already defined in study plan
  - Establishment of technical working/focus groups
    - Aquatic TWG
      - Instream Flow Modeling Focus Group
      - Water Temperature Modeling Focus Group
    - Cultural TWG
    - Land TWG
    - Recreation TWG
      - Whitewater Boating Focus Group
    - Terrestrial TWG

# Aquatic Resources

Information Gathering/Consultation	Stakeholders	Timing
AQ 1 – Instream Flow		
Conduct field trip to select study sites and specific habitat units and transects to model	Instream Flow Modeling Focus Group	March
Obtain concurrence on cross-section placement within mesohabitat units		
Select location and lengths of reach study sites		
Develop life stage periodicity chart for aquatic species and riparian vegetation	Instream Flow Modeling Focus Group	May / Oct
Select species and life stages (and/or guilds) for habitat modeling		
Confirm HSC to be used for habitat modeling		
Determine calibration flows once hydrology compiled		
Determined details of habitat modeling		
AQ 2 – Fish Population		
Select fish population sampling sites	Aquatic TWG	March
Determine data sheet contents		

Modeling  
Field/Site Visit

# Aquatic Resources

Information Gathering/Consultation	Stakeholders	Timing
AQ 3 – Macroinvertebrates		
Select macroinvertebrate sampling sites	Aquatic TWG	March
AQ 4 – Water Temperature		
Obtain approval from NPS to install temperature probes in SNP	NPS	March
Oversight and technical review of modeling procedures/decisions	Water Temperature Modeling Focus Group	May / Oct
AQ 5 – Geomorphology		
Select geomorphic and riparian quantitative transects	Instream Flow Modeling Focus Group	March
AQ 7 – Special-status Amphibians and Reptiles		
Select FYLF modeling sites	Instream Flow Modeling Focus Group	March
AQ 9 – Entrainment		
Identify representative sampling periods	Aquatic TWG	March

Modeling  
Field/Site Visit

# Cultural Resources

Information Gathering/Consultation	Stakeholders	Timing
CUL 1 – Cultural Resources		
Conduct Native American Heritage Commission (NAHC) Sacred Lands Search	NAHC	February
<ul style="list-style-type: none"> <li>• Consult Regarding Area of Potential Effects (APE) for Cultural and Tribal Resources</li> <li>• Study plan methodology consultation and review</li> <li>• Overview of proposed schedule for field studies</li> </ul>	Cultural TWG	March
Conduct formal consultation with SHPO regarding APE	SHPO	March - April
Conduct outreach to historical societies and interested parties	Interested Historical Societies	March
Conduct tribal resources specific consultation <ul style="list-style-type: none"> <li>• Ethnographer to consult with stakeholders to identify properties, plants and other resources of traditional cultural or religious importance to Native Americans</li> </ul>	Interested Native American Tribes	April - July

# Land Resources

Information Gathering/Consultation	Stakeholders	Timing
LAND 1 – Transportation System		
Determine if any Project roads were previously inventoried and assessed	BLM	March
Obtain Asset Management System GIS data	BLM	
Identify road and trail standards	BLM, Tulare Co	
LAND 2 – Aesthetic Resources		
Obtain visual resources objectives	BLM, NPS	March
Identify visual / noise policies and standards	Tulare Co	
Identify Key Observation Points (KOPs) for existing visual condition assessment	BLM, NPS, Tulare Co	
Identify specific noise-sensitive locations for helicopter study	NPS	
Identify locations for Kaweah No. 3 Forebay spill study (noise and visual)	NPS	
LAND 3 – Land Use		
Obtain updated GIS data layer(s) showing range allotments, fencing, cattle guards, etc.	BLM	March

Field/Site Visit

# Recreation Resources

Information Gathering/Consultation	Stakeholders	Timing
REC 1 – Recreation Resources		
Confirm location of trail camera installation sites	BLM	March
Identify design and accessibility standards (for Edison Beach)	Tulare Co	April
Identify recreation opportunities and use levels	BLM, Tulare Co	May - July
Identify concerns regarding recreation user conflicts	BLM, Tulare Co	May - July
Interview private property owners to identify concerns regarding Edison Beach	Private property owners	May - July
Identify public safety incidents	BLM, Tulare Co	May - July



# Recreation Resources

Information Gathering/Consultation	Stakeholders	Timing
REC 2 – Whitewater Boating		
Compile information regarding commercial and private boating use	BLM, Tulare Co	March
Develop additional information regarding whitewater boating opportunities and use	Whitewater Boating Focus Group	April
Conduct site visit (if necessary, as determined in WW Boating Focus Group)		April
Develop WW flow study survey instrument (if necessary, as determined in WW Boating Focus Group)		April - May
Conduct WW flow study (if necessary)		May

Field/Site Visit

# Terrestrial Resources

Information Gathering/Consultation	Stakeholders	Timing
TERR 1 – Botanical Resources		
Review updated special-status plant and noxious weed list	BLM, CDFW	March
Identify reference population locations		
Approval of botanical survey timing		
TERR 2 – Wildlife Resources		
Review updated special-status wildlife list	BLM, CDFW	March

# Proposed Meetings/Communication

- Focused Agency/Tribal Meetings
  - BLM
  - NPS
  - Tulare County
  - SHPO
  - Native American Tribes
- Technical Working Groups
  - Aquatics
  - Cultural
- Focus Groups
  - Instream Flow Modeling / Water Temperature Modeling
  - Whitewater Boating
- Conference Calls / E-mails

# Annual Reporting/Meetings

- An Annual Study Plan Progress Report will be filed with FERC (Oct 2018/2019) which includes:
  - Overall progress of study plan implementation,
  - Data collected to date,
  - Deviations in technical approaches or schedules,
  - Proposed schedule for completion of remaining study plan components, and
  - Description of proposed modifications to the approved studies or new studies proposed by SCE.

# Annual Reporting/Meetings

- An Annual Study Plan Progress Meeting will be convened (Nov 2018/2019) to discuss:
  - Study results and proposals to modify the study plans in light of progress of the study plan and data collected.
- SCE will file a meeting summary with FERC following the meeting.

# Key Contacts

Name	Role/Resource	E-mail	Phone
<b>Southern California Edison</b>			
David Moore	Project Manager	david.moore@sce.com	626-302-9494
<b>Cardno, Inc.</b>			
Ed Bianchi	Project Director	ed.bianchi@cardno.com	916-386-3817
Julie Smith	Project Manager	julie.smith@cardno.com	661-714-5953
Craig Addley	Aquatics/Hydrology	craig.addley@cardno.com	916-386-3827
Sandra Walter-Perry	Land	sandra.perry@cardno.com	916-386-3822
Polly Allen	Cultural	polly.allen@cardno.com	530-615-8909
David Martinez	Recreation	david.martinez@cardno.com	916-386-3842
<b>Janelle Nolan &amp; Associates Environmental Consulting</b>			
Janelle Nolan	Terrestrial	janelle@jna-consulting.com	530-295-0502

SCE Relicensing website: [www.sce.com/kaweah](http://www.sce.com/kaweah)

# Key Contacts

Name	Role/Resource	E-mail	Phone
<b>Federal Energy Regulatory Commission</b>			
Jim Hastreiter	Project Coordinator	james.hastreiter@ferc.gov	503-552-2760

Register online to be notified via email of new filings and issuances related to the Kaweah Project

**<http://www.ferc.gov/esubscribenow.htm>**

Access documents filed related to the Kaweah Project

**<https://www.ferc.gov/docs-filing/elibrary.asp>**

# Adjourn

