

---

**TABLE OF CONTENTS**


---

	Page
<b>1.0 Introduction.....</b>	<b>1-1</b>
1.1 Background.....	1-1
1.2 Project Location .....	1-1
1.3 Overview of Existing Project .....	1-1
1.4 Purpose of the PAD .....	1-2
1.5 PAD Organization .....	1-2
1.6 Process Plan and Schedule.....	1-2
1.7 Early Relicensing Activities .....	1-3
1.8 Draft Technical Study Plans.....	1-3
1.9 FERC Scoping Meeting and Site Visit.....	1-4

---

**LIST OF MAPS**


---

Map 1-1	Project Vicinity and Land Jurisdiction .....	1-7
---------	--	-----

---

**LIST OF ACRONYMS**


---

CFR	Code of Federal Regulations
Forest Service	United States Forest Service
FERC or Commission	Federal Energy Regulatory Commission
ILP	Integrated Licensing Process
NGO	Non-governmental Organization
NOI	Notice of Intent
PAD	Pre-Application Document
Project	Kern River No. 1 Hydroelectric Project
SCE	Southern California Edison Company

This Page Intentionally Left Blank

## **1.0 INTRODUCTION**

### **1.1 BACKGROUND**

Southern California Edison Company (SCE) is the licensee, owner, and operator of the Kern River No. 1 Hydroelectric Project (Project) (Federal Energy Regulatory Commission [FERC or Commission] Project No. 1930). SCE currently operates the Project under a 30-year FERC license issued on June 16, 1998. The current license expires on May 31, 2028.

SCE is seeking renewal of its license to continue operation and maintenance of the Project. In support of preparing an application for a new license, SCE has elected to use the Integrated Licensing Process (ILP), as defined in 18 Code of Federal Regulations (CFR) Part 5. To formally initiate the relicensing process, FERC requires the licensee to file a Notice of Intent (NOI) to seek a new license and a Pre-Application Document (PAD), a minimum of 5 years prior to the expiration of the current license. In accordance with the regulations, SCE will file the PAD and associated NOI with FERC prior to the regulatory deadline of May 31, 2023, and distribute it to federal and state resource agencies, local governments, Native American Tribes, non-governmental organizations (NGOs), and other interested parties.

### **1.2 PROJECT LOCATION**

The Project is located on the lower Kern River on the western slope of the Sierra Nevada, approximately 15 miles east of the City of Bakersfield in Kern County, California. The Project occupies federal lands within the Sequoia National Forest which is under the jurisdiction of the United States Forest Service (Forest Service). Map 1-1 displays the Project vicinity and associated land jurisdiction.

### **1.3 OVERVIEW OF EXISTING PROJECT**

The Project, completed in 1906, is operated in a run-of-river mode and has no water storage. Water from the Kern River is diverted at Democrat Dam and directed through a concrete sandbox, where sediment settles out of the water before entering the Project's conveyance system. From the sandbox, water flows into a conveyance system comprised of approximately 8.5-miles of tunnels, flumes, and conduits that run along the eastern side of the Kern River. Water within the conveyance system is directed to a small concrete forebay, through a buried penstock, and into the Project powerhouse. The total installed capacity of the powerhouse is 26.3 megawatts. Water exiting the powerhouse enters a short tailrace and is returned to the Kern River upstream of the Kern Canyon Project (FERC Project No. 178) owned by Kern and Tule Hydro LLC.

Refer to Section 2.0 for additional details on the existing Project location; facilities; and operation and maintenance activities.

## 1.4 PURPOSE OF THE PAD

The PAD was prepared in compliance with 18 CFR Part 5, which defines the form and content requirements of the document. The purpose of the PAD is to provide FERC, federal and state resource agencies, local governments, Native American Tribes, NGOs, and other interested parties with existing, relevant, and reasonably available information related to Project facilities and engineering, operational, and environmental aspects of the Project. The PAD also identifies any pertinent existing resource issues/impacts and Draft Technical Study Plans proposed by SCE.

## 1.5 PAD ORGANIZATION

The information contained in this document was assembled based on the requirements set forth in 18 CFR § 5.6 (c) and (d) and is organized as follows:

Section	Description	FERC Regulation
1.0	Introduction to the Project and document organization	–
2.0	Description of the Project location, facilities, operation, and maintenance	18 CFR § 5.6(d)(2)
3.0	Description of the existing environment and resource impacts, including reference to literature and information sources cited for each resource area	18 CFR § 5.6(d)(3) 18 CFR § 5.6(c)(2)
4.0	Identification of preliminary resource issues, potential studies, and relevant comprehensive plans and resource management plans	18 CFR § 5.6(d)(4)
5.0	Summary of contacts	18 CFR § 5.6(d)(5)
Appendix A	Relicensing Process Plan	18 CFR § 5.6(d)(1)
Appendix B	Summary of Contacts (additional details)	18 CFR § 5.6(d)(5)
Appendix C	Draft Technical Study Plans	18 CFR § 5.6(d)(4)

## 1.6 PROCESS PLAN AND SCHEDULE

Pursuant to 18 CFR § 5.6(d)(1), SCE developed a Process Plan and Schedule (Appendix A) that summarizes the approach for relicensing the Project.

Specifically, the Process Plan and Schedule describe pre-application activities, incorporating the time frames for pre-filing consultation and information gathering; FERC scoping; study plan development, study execution, and reporting; filing of the Draft and Final License Application; and FERC application processing. SCE's proposed schedule (Appendix A, Table 1) provides each of the major ILP relicensing activities, associated CFR reference, responsible party, and deadline for implementation of the activity.

## 1.7 EARLY RELICENSING ACTIVITIES

On July 21, 2022, SCE broadly distributed a comprehensive questionnaire to stakeholders designed specifically to identify existing, relevant, and reasonably available information related to the Project and solicit information related to potential resource issues and local community concerns. As a follow-up to the questionnaire, on August 16, 2022, SCE sent specific data requests via e-mail to the United States Fish and Wildlife Service, Forest Service, and the California Department of Fish and Wildlife.

On August 23, 2022, SCE distributed an announcement notifying federal and state resource agencies, local governments, Native American Tribes, NGOs, and other interested parties of the upcoming relicensing for the Project. In preparation for this PAD, SCE conducted searches of publicly available databases and its own records.

On April 25, 2023, SCE provided a notice to the aforementioned relicensing stakeholders of a relicensing kick-off teleconference schedule for June 13, 2023. The purpose of the teleconference is to acquaint stakeholders with FERC's ILP, including key milestones and opportunities for stakeholder participation; describe Project facilities and operations; and explain the PAD contents and organization. Refer to Section 5 and Appendix B for a summary of early relicensing activities and contacts associated with preparation of the PAD.

## 1.8 DRAFT TECHNICAL STUDY PLANS

Based on resources identified; availability of existing information; discussion with SCE personnel familiar with operation and maintenance of the Project; and responses to the Project Information Questionnaire (Appendix B), SCE developed the following 13 Draft Technical Study Plans for consideration in the relicensing proceeding. The overall objective of the Draft Technical Study Plans is to address data gaps in existing information such that sufficient information is available to evaluate potential Project impacts in the License Application.

The Draft Technical Study Plans are organized into five major resource areas – Aquatic, Cultural and Tribal, Land, Recreation, and Terrestrial. Refer to Appendix C for Draft Technical Study Plans for the Project.

<b>Aquatic Resources</b>
AQ 1 – Hydrology
AQ 2 – Water Quality / Water Temperature
AQ 3 – Fish Population
<b>Cultural and Tribal Resources</b>
CUL 1 – Built Environment
CUL 2 – Archaeology
TRI 1 – Tribal

<b>Land Resources</b>
LAND 1 – Road and Trail Condition Assessment LAND 2 – Erosion and Sedimentation
<b>Recreation Resources</b>
REC 1 – Recreation Facility Condition Assessment REC 2 – Recreation Facility Use Assessment REC 3 – Whitewater Boating
<b>Terrestrial Resources</b>
TERR 1 – Botanical TERR 2 – Wildlife

## 1.9 FERC SCOPING MEETING AND SITE VISIT

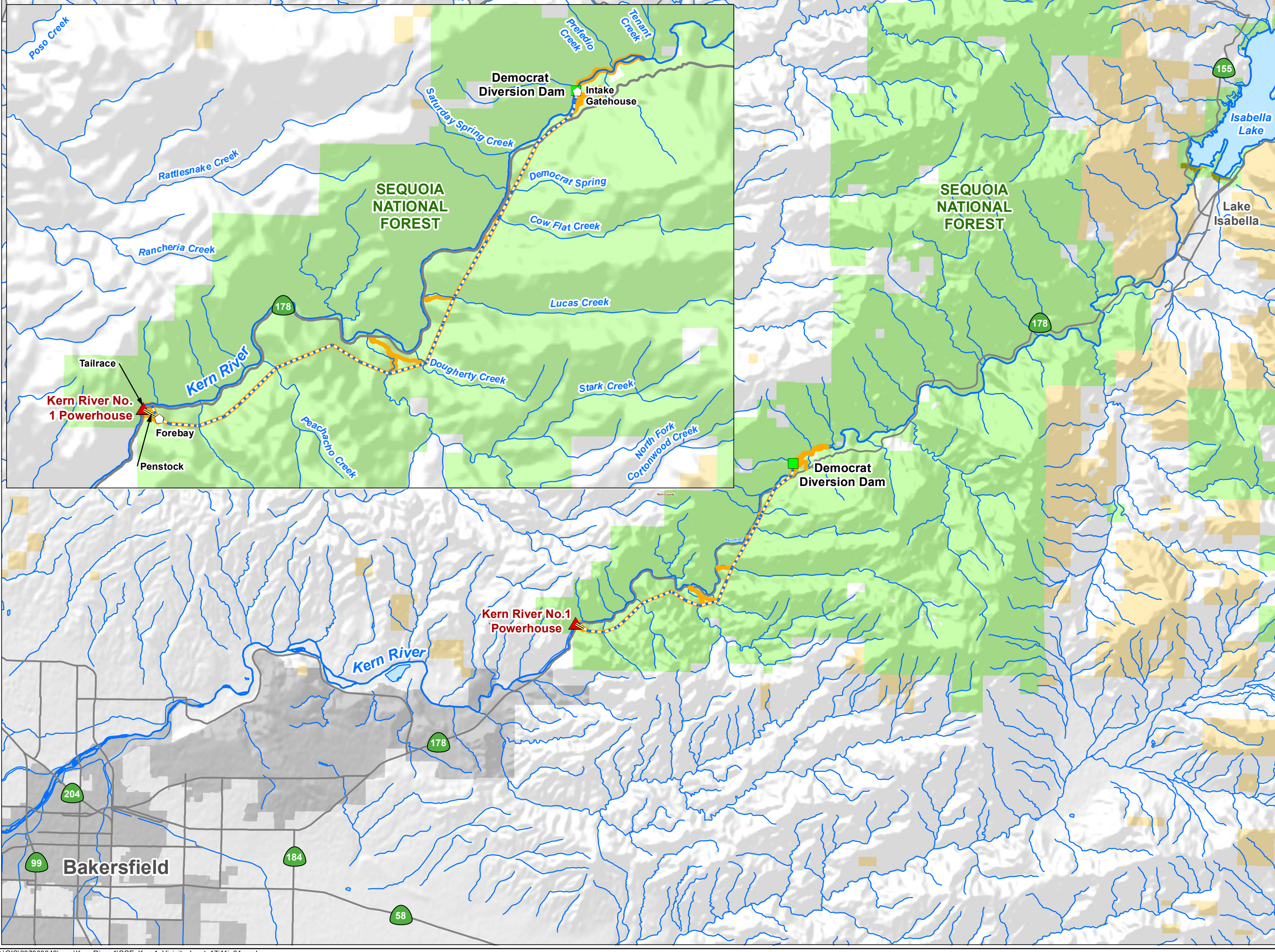
Pursuant to 18 CFR § 5.8(b)(3)(viii), FERC will convene a scoping meeting and site visit<sup>1</sup> within 30 days of the issuance of its Notice of Commencement of Proceeding and Scoping Document. Typically, FERC conducts two scoping meetings with one meeting held during the day to focus on the solicitation of comments and information from resource agencies and Tribes, and the second meeting held in the evening to facilitate participation from the public and NGOs. The scoping meetings are anticipated to be held in August / September 2023. FERC will provide a public notice of both the scoping meeting and the site visit. All interested stakeholders are invited to participate in the scoping meeting and site visit.

<sup>1</sup> Recently, as a result of the pandemic, FERC has elected to conduct virtual scoping for hydropower relicensing projects.

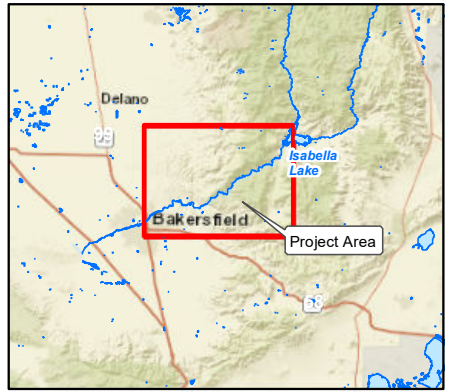
# MAPS

This Page Intentionally Left Blank



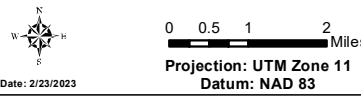


- Facilities**
- Dam
  - ▲ Powerhouse
  - Water Conveyance Feature
  - Flowline
  - Penstock
  - FERC Boundary
- Other Features**
- Highway
  - Watercourse
  - Water Body
- Land Jurisdiction\***
- U.S. Forest Service
  - U.S. Bureau of Land Management
  - U.S. Army Corps of Engineers
  - Private (Blank)
- \*SOURCE: BLM 2021



Kern River No. 1 Hydroelectric Project  
FERC Project No. 1930

**Map 1-1  
Project Vicinity and  
Land Jurisdiction**



Southern California Edison (SCE) has no reason to believe that there are any inaccuracies or defects with information incorporated in this work and make no representations of any kind, including, but not limited to, the warranties of merchantability or fitness for a particular use, nor are any such warranties to be implied, with respect to the information or data, furnished herein. No part of this map may be reproduced or transmitted in any form or by any means, electronic or mechanical, including photocopying and recording system, except as expressly permitted in writing by SCE.

This Page Intentionally Left Blank