

WELCOME - HOUSEKEEPING

Thank you for joining us this evening.

This meeting is being recorded.

Please note, your camera, microphone, and reactions are disabled for this meeting.

To add closed captioning, please click the three dots found at the top right of the tool bar. In the dropdown menu, select turn on live captions.

To submit a question, use the **Q&A window** throughout the session.

Please only submit questions that are relevant to the presentation and topics being presented.



Community Meeting for Kern County
May 26, 2022



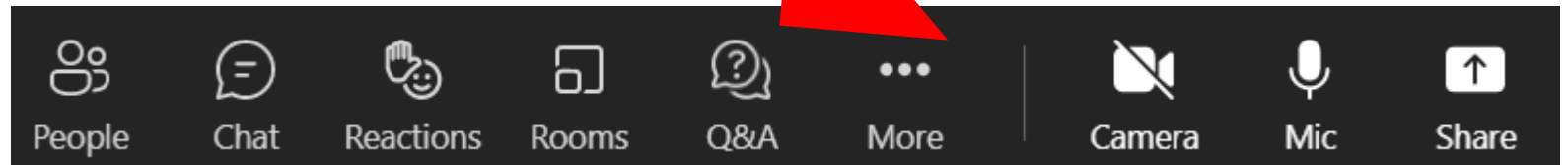
Our Commitment to California

Keeping our communities safe from wildfires

HOW TO SUBMIT A QUESTION

You can submit a question using the **Q&A window** throughout the session.

Please only submit questions that are relevant to the presentation and topics being presented.



SCE PRESENTERS



Cal Rossi
Government Relations
Manager
Local Public Affairs



Paul Grigaux
Vice President
Distribution



Sunny Chu
Principal Manager
Wildfire Operations



Dani Anderson
Senior Manager
Customer Care & Access and
Functional Needs

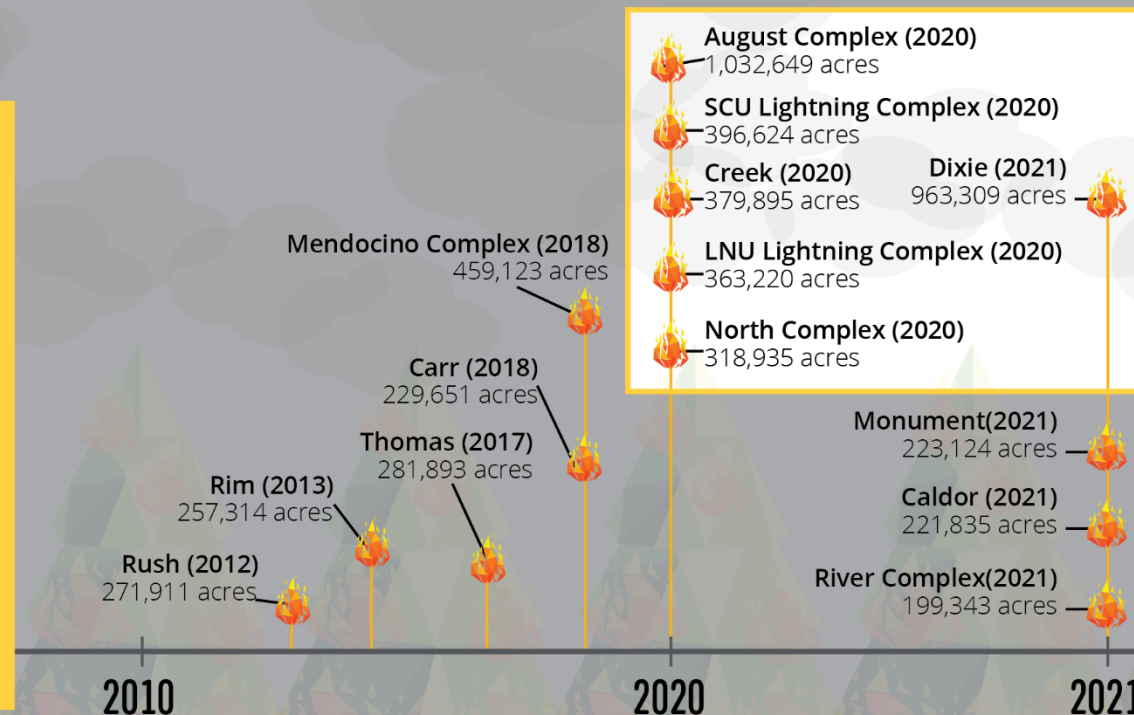
AGENDA

- **2021 Wildfire Season**
- **SCE's Wildfire Mitigation Activities**
- **Public Safety Power Shutoffs**
- **Reducing the Need for PSPS**
- **PSPS Communications**
- **Customer Programs & Resources**
- **Q&A**

2021 WILDFIRE SEASON

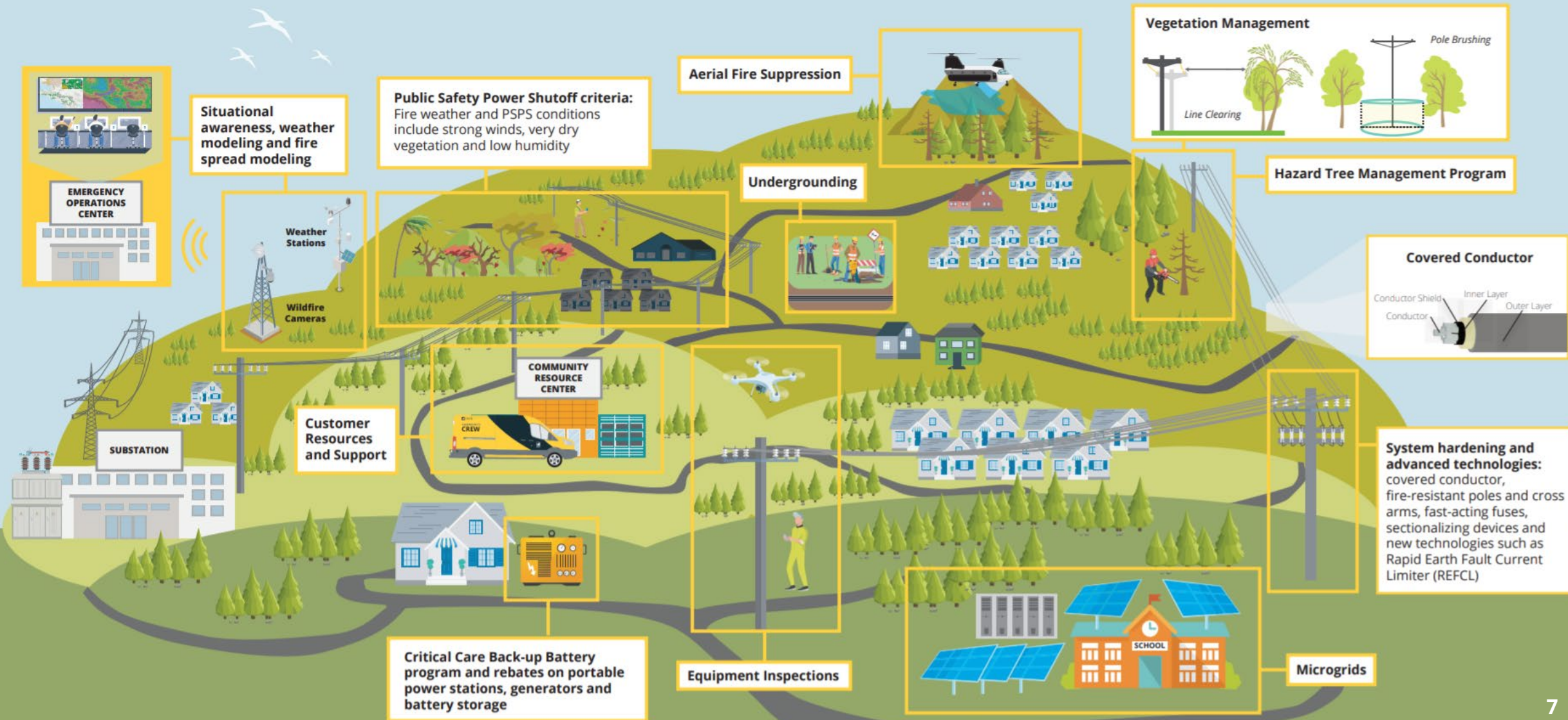
California experienced another year of extreme wildfire activity, exacerbated by intensifying drought. Dry vegetation and strong winds continue to threaten our communities during year-round fire season

**6 OF THE 7
LARGEST CALIFORNIA
WILDFIRES
HAVE HAPPENED SINCE
2020***



*Source: https://www.fire.ca.gov/media/4jandlhh/top20_acres.pdf

REDUCING WILDFIRE RISK IN OUR COMMUNITIES



INSULATED WIRE IS ONE OF THE MOST EFFECTIVE MEASURES TO REDUCE WILDFIRE & PSPS RISKS IN SCE'S SERVICE AREA

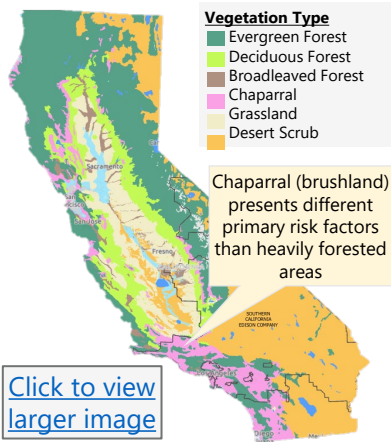
Insulated wire is a very valuable tool to expeditiously and cost-effectively reduce wildfire risk specific to SCE

Undergrounding considered for certain locations based on risk profile

Geography

Contact from vegetation and other objects is a key risk factor in much of SCE's area

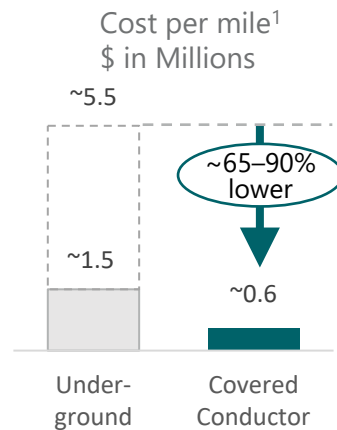
Insulated wire is very effective in mitigating these risks



Cost to Implement

Insulated wire installation costs significantly lower than undergrounding

Undergrounding costs vary depending on construction methods, locational, and operational factors



Execution Speed

Insulated wire can be deployed within 16–24+ months, and sometimes faster

Undergrounding generally takes 25–48+ months

Actual installed miles of insulated wire² vs. hypothetical undergrounded miles³



Unique Factors

Undergrounding is considered where there is:

- High burn frequency
- Limited egress
- Wind speeds exceeding insulated wire PSPS thresholds
- Exceptionally high potential consequence (>10,000 acres)

Several hundred miles currently under consideration for additional enhanced mitigation, including undergrounding

1. Based on data provided in SCE's 2022 WMP Update

2. Through March 31, 2022

3. Undergrounded miles is a hypothetical approximation of underground lines that could have been constructed through March 31, 2022, based on SCE's assumptions and experience with planning and executing undergrounding projects

REDUCING WILDFIRE RISK & PSPS IMPACTS – BY THE NUMBERS

SCE estimates its wildfire mitigation and PSPS measures have reduced the risk of damage from catastrophic¹ wildfires by **65% to 70%**, relative to pre-2018 levels.



ONGOING WILDFIRE MITIGATION EFFORTS

~**34%** of overhead wire in high fire risk areas replaced with insulated wire²

Suite of mitigations include system hardening, annual equipment inspections, vegetation management and situational awareness measures



IMPROVED PSPS EXECUTION & CUSTOMER SUPPORT

73% reduction in PSPS outage time in 2021 on frequently impacted circuits³

81,000 customers removed from scope from exceptions and switching protocols

64 Community Resource Centers available



AERIAL FIRE SUPPRESSION SUPPORT

Contributed \$18 million for the creation of the quick reaction force of the world's largest helitankers

Used on more than 50 fires in 2021, helping to suppress fires in its early stages

1. A wildfire directly causing one or more deaths, damaging or destroying more than 500 structures, or burning more than 140,000 acres of land

2. Through March 31, 2022

3. Based on 2021 weather and fuel conditions

PUBLIC SAFETY POWER SHUTOFFS

- A tool of last resort used during dangerous fire conditions (weather and fuels)
- De-energizing lines to prevent a spark from our equipment starting a significant wildfire
- Primarily impacts circuits in high fire risk areas
- Use of multiple methods to notify customers and partners in affected areas before, during and after a PSPS event
- In 2021, continued PSPS improvements and reduced frequency, scope and duration of PSPS

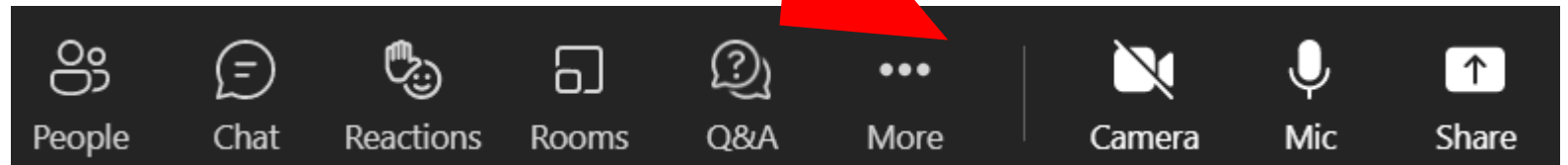


Damage/hazards found after strong winds during PSPS

HOW TO SUBMIT A QUESTION

You can submit a question using the **Q&A window** throughout the session.

Please only submit questions that are relevant to the presentation and topics being presented.



REDUCING THE NEED FOR PSPS

2021 ACHIEVEMENTS AND 2022 PLANS



Insulated Wire

Replaced an additional **1,500** miles of bare wire with insulated wire; **700** miles of expedited grid hardening to raise PSPS threshold prior to peak wind season. Plan to replace **1,100** miles in 2022; **270** miles of expedited grid hardening



Segmentation

Installed **23** additional remote-controlled sectionalizing devices to segment and isolate circuits during PSPS. Plan to add **15** devices in 2022.



Weather Stations

Installed **400** additional weather stations for improved forecasting and accuracy of PSPS operations. Plan to add **150** weather stations in 2022.



Switching Protocols

Removed **81,000** customers from PSPS scope through exceptions and switching protocols



Operational Protocols

Utilized up-to-date information on ground conditions (e.g., lack of vegetation) to assess wildfire threat and the need for PSPS

2021 PSPS EVENTS

Service Area Compared to 2020

Statistics	Customers Interrupted	Circuit Interruptions	Customer Minutes of Interruption
2020 Fire Season	~348K	~584	~388M
2021 Fire Season	~85K	~124	~105M
Delta	↓76%	↓79%	↓73%

Kern County Compared to 2020

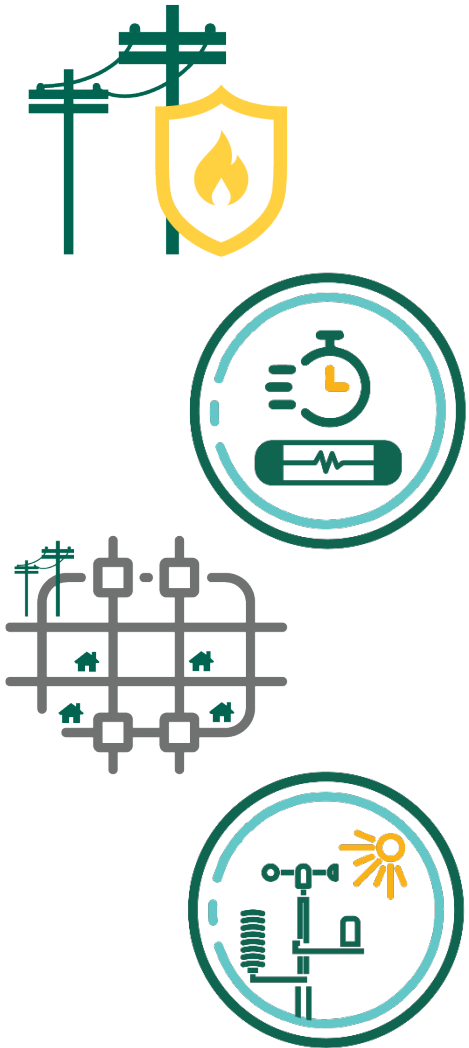
Statistics	Customers Interrupted	Circuit Interruptions	Customer Minutes of Interruption
2020 Fire Season	~25K	~40	~29M
2021 Fire Season	0	0	0
Delta	↓100%	↓100%	↓100%

100%

**REDUCTION IN
CUSTOMER MINUTES
OF INTERRUPTION IN
KERN COUNTY**

EXPEDITED GRID HARDENING

ON CIRCUITS IMPACTED BY PSPS IN KERN COUNTY



Completed in 2021

- Expedited installation of*:
 - **80** miles of insulated wire
 - **1** sectionalizing device
- Removed **1** circuit from PSPS consideration

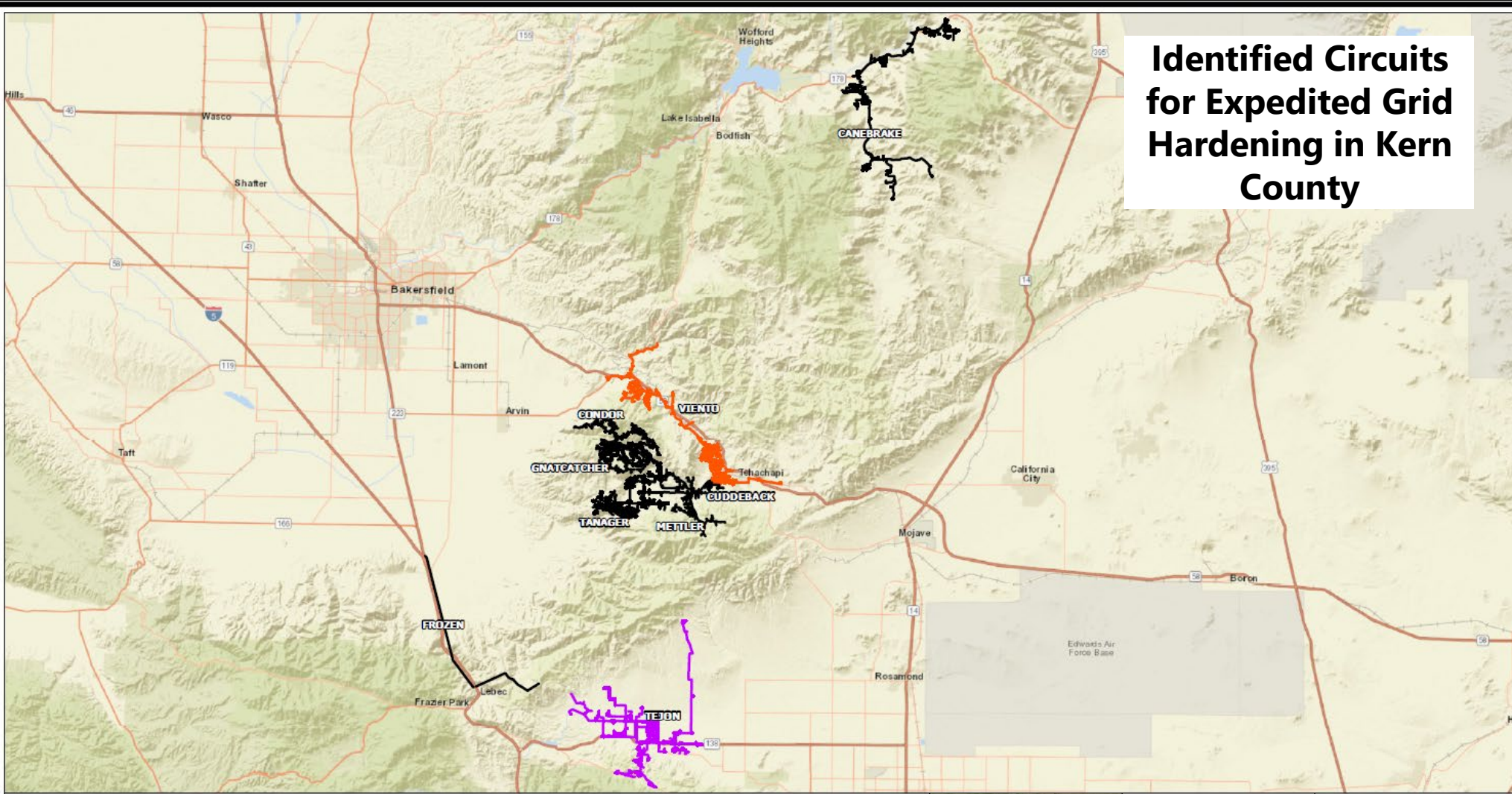
*Note: Number of total installed on all circuits in the county may be higher

Plans for 2022

- Expedite installation of:
 - **1** sectionalizing device

**Target Completion Date:
Oct. 1, 2022**

Identified Circuits for Expedited Grid Hardening in Kern County



KERN COUNTY

CIRCUITS TARGETED FOR 2022 COMPLETION



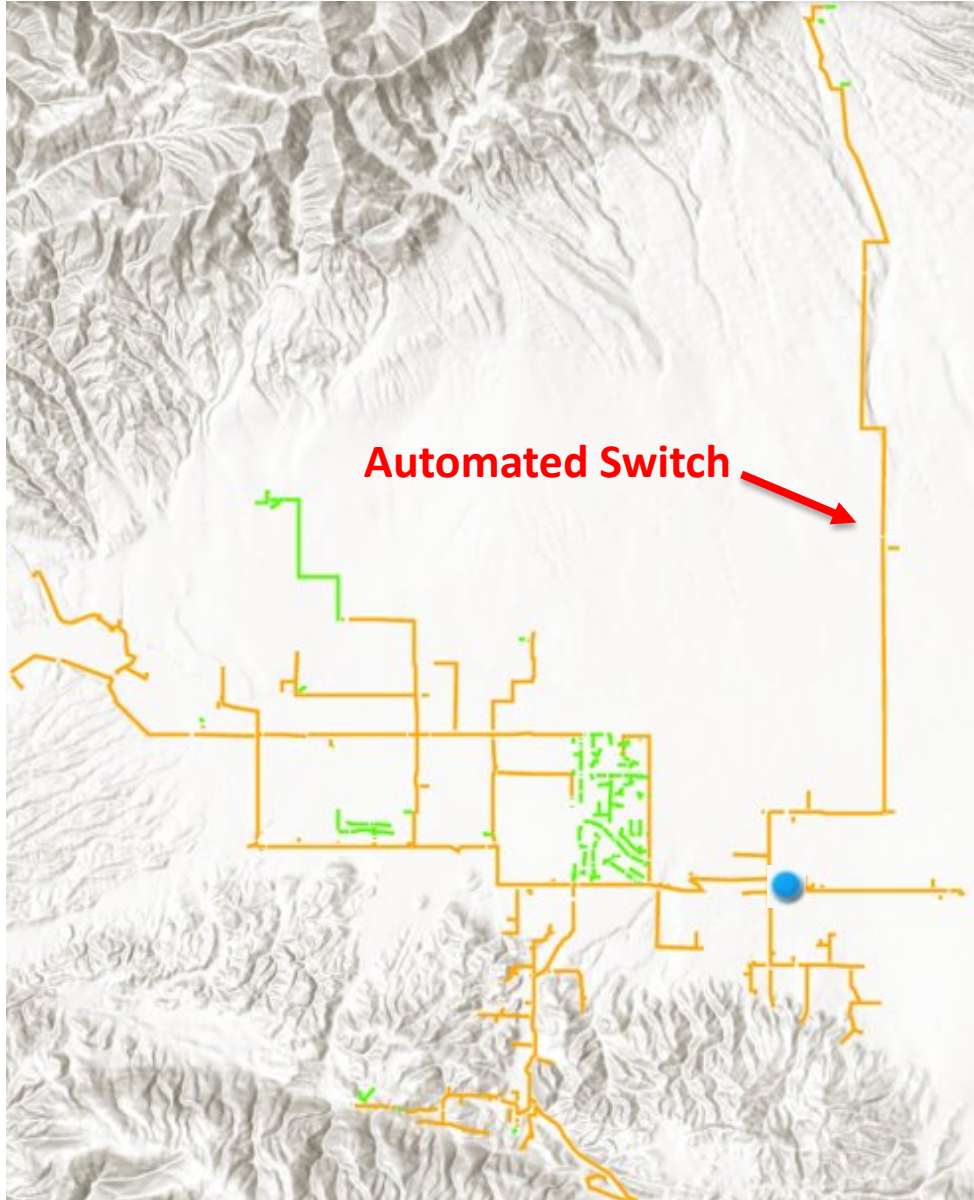
Date: 5/28/2022
 File Name: KERN2.mxd
 Version:
 Created By:
 Geospatial Analysis,
 Geomatics | Central Field Services



Features depicted herein are planning level accuracy and intended for informational purposes only. Distances and locations may be distorted at this scale. Always consult with the proper legal documents or agencies regarding such features.
 Central Field Services
 Service Layer Credits: Source: Esri, HERE, Garmin, USGS, Intermap, INCREMENT P, NOAA, Earthstar, DELTA, Esri, China (Hong Kong), Esri Korea, Esri (Thailand), NGCC, (c) OpenStreetMap contributors, and the GIS User Community
 Source: Esri, HERE, Garmin, Intermap, increment P Corp., GEBCO, USGS, FAO, NPS, NRCAN, GEBCO, IGN, Intermap, Inc., Swire, Ordnance Survey, Esri Japan, METI, Esri China (Hong Kong), (c) OpenStreetMap contributors, and the GIS



EXAMPLE OF REDUCING THE NEED FOR PSPS



Circuit: Tejon

Community: Kern County Unincorporated,
Los Angeles County Unincorporated

Planned Work:

- Install 1 automated switch for additional circuit segmentation

Expected Completion Date:

- 10/1/2022

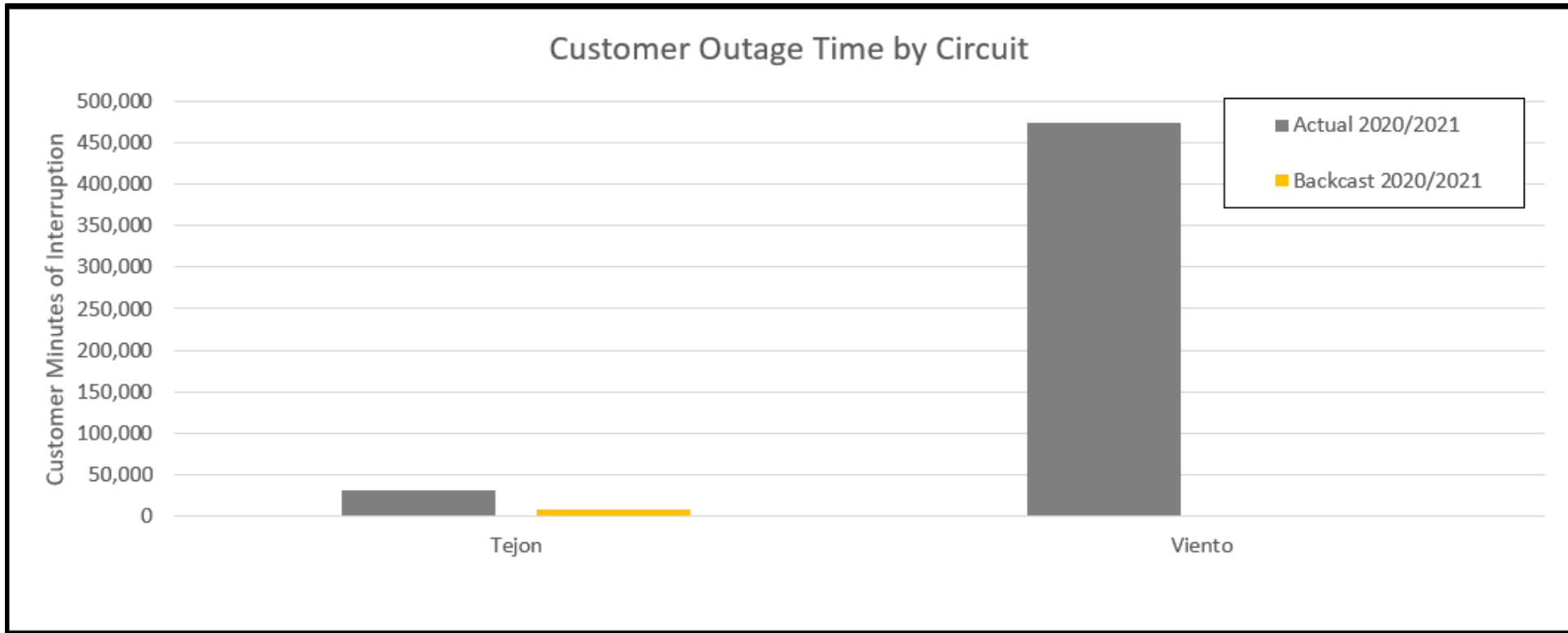
Expected Improvements:

- **74% reduction** in customer outage time, assuming the same weather conditions in 2020 and 2021

For circuit details and status, visit:
sce.com/pspsenhancements

EXPECTED IMPROVEMENTS

With the implementation of our plans this year, we expect to see a **98% reduction in customer outage time** across these PSPS impacted circuits in Kern County communities compared to 2020, assuming the same weather conditions



Updated: 05-23-2022

- 1) PSPS impacted circuits are circuits that have experienced one or more PSPS related outages in 2019-2021
- 2) Customer outage time is measured as total Customer Minutes of Interruption (CMI)

PSPS COMMUNICATIONS

Notifications

- SCE provides PSPS notifications through various communication channels
 - SCE Account Holders (email, text, and voice call)
 - Address Level Alerts
- Sign up to stay informed before, during and after a PSPS event

SCE Outage Map

- Consolidated outage map that incorporates PSPS outages at [sce.com/outagemap](https://www.sce.com/outagemap)

Power Outages

Search by address, city, county or ZIP

[Click here to enter the outage number and check the status](#)

Current Outages ▼
28 Outages | 1,065 Customers Impacted

Upcoming Scheduled Outages ▼
1,531 Outages Scheduled | 68,293 Customers Possibly Impacted

Public Safety Power Shutoff (PSPS)
Search for an address to see specific PSPS details or see county-level details [below](#).

Not Seeing Your Outage? Report

Last Updated: 5/2/2022 - 6:02 PM PST

Outage Alerts
Stay informed about unplanned repair and planned maintenance outages. Get Alerts >

Community Support

Resource Centers Crew Vehicles Further Assistance

SCE Community Resource Centers are available to support customers during a Public Safety Power Shutoffs... [More](#) ▼

SCE CUSTOMER PROGRAMS & RESOURCES



CUSTOMER RESOURCE CENTERS & COMMUNITY CREW VEHICLES

- Services offered: information, charging of mobile devices, assistive technology/medical devices, PSPS outage alert enrollment support, access to water, light snacks, ice and ice vouchers, restrooms, and small insulated bags to keep medication cool
- Translations services for over 120 languages including American Sign Language (ASL)



CUSTOMER PROGRAMS

- Partnered with 211 to help customers with Access and Functional Needs (AFN) develop a resiliency plan and enroll in eligible assistance programs
- 211 provides specialized referrals for customers with AFN experiencing PSPS. Services include connecting customers to shelf-stable food, hot meal delivery, transportation and/or temporary shelter
- SCE will improve communication methods, including videos utilizing ASL for marketing and PSPS notifications



CUSTOMER RESILIENCY EQUIPMENT

- Critical Care Backup Battery program and the In-Event Battery Loan pilot provide eligible customers with a portable backup battery to power assistive technology/medical devices during a PSPS event
- Rebates on portable batteries and generators for customers residing in high fire risk areas on marketplace.sce.com

Website: [sce.com/wildfire](https://www.sce.com/wildfire)
Energized by Edison Stories & Videos: [edison.com/wildfire-safety](https://www.edison.com/wildfire-safety)

Email: wildfireoutreach@sce.com
Social Media: [@SCE](#) on Twitter & Facebook
SCE Customer Support: 1-800-655-4555

LEARN MORE



- Visit our website to learn more about our wildfire safety efforts and Public Safety Power Shutoffs (PSPS)
- Provide feedback through the survey

SIGN UP



- PSPS alerts
- SCE's Medical Baseline program
- SCE programs and rebates

BE PREPARED

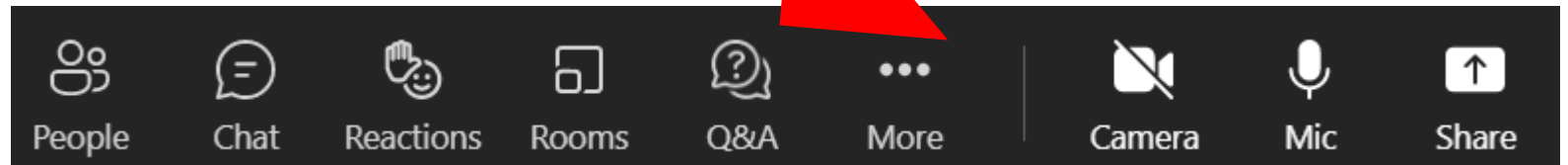


- Be prepared with a safety preparedness plan, some basic supplies and advance planning
- Power outage tips

HOW TO SUBMIT A QUESTION

You can submit a question using the **Q&A window** throughout the session.

Please only submit questions that are relevant to the presentation and topics being presented.





THANK YOU

Website: sce.com/wildfire

Energized by Edison Stories & Videos: edison.com/wildfire-safety

Email: wildfireoutreach@sce.com

Social Media: [@SCE](#) on Twitter & Facebook

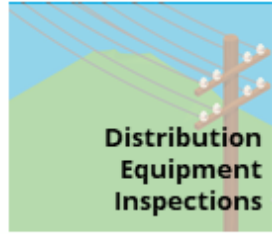
SCE Customer Support: 1-800-655-4555

ADDITIONAL RESOURCES



Wildfire Mitigation Activities SERVICE AREA

Data as of 12/31/21



Distribution Equipment Inspections

2021
Completed/Target
179,600/163,000
inspections

✓ **110%**
completed

Completed
Since 2018
764,000+
inspections

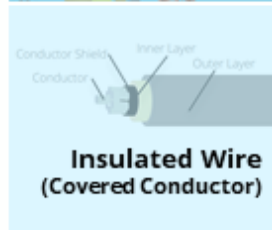


Transmission Equipment Inspections

2021
Completed/Target
20,800/16,800
inspections

✓ **124%**
completed

Completed
Since 2018
106,900+
inspections



Insulated Wire (Covered Conductor)

2021
Completed/Target
1,500/1,000
circuit miles installed

✓ **150%**
completed

Completed
Since 2018
2,900+
circuit miles installed



Fast-Acting Fuses

2021
Completed/Target
350/330
fuses installed or replaced

✓ **106%**
completed

Completed
Since 2018
13,300+
fuses installed or replaced



Hazard Tree Management

2021
Completed/Target
131,400/120,000
trees assessed

✓ **110%**
completed

Completed
Since 2018
359,900+
trees assessed



Weather Stations

2021
Completed/Target
400/375
weather stations installed

➔ **107%**
completed

Completed
Since 2018
1,460+
weather stations installed



High-Definition Wildfire Cameras

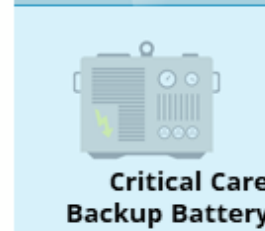
Cameras currently provide visibility to about 90% of our high fire risk areas (HFRA) and the planned additional cameras in 2022 and beyond will increase coverage to nearly all of HFRA

Completed
Since 2018
166
cameras installed



Aerial Fire Suppression Resources

SCE contributed \$18 million to support the creation of a quick reaction force of aerial firefighting assets across counties in SCE's service area to coordinate and reach wildfires in their early stages. These unique water and fire retardant dropping helitankers have the capability to operate day and night.



Critical Care Backup Battery

2021
Completed
6,000/3,600
batteries provided to eligible customers

✓ **167%**
completed

Completed Since July 2020
6,740+
batteries provided to eligible customers



Community Resource Centers

64
sites available



Community Crew Vehicles

8
vehicles available

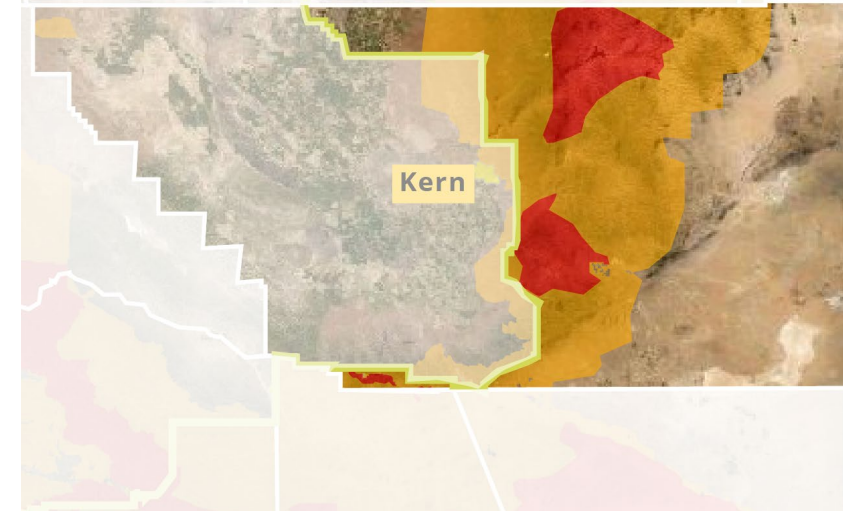
Wildfire Mitigation Activities KERN COUNTY

Completed

	2021	SINCE 2018
DISTRIBUTION EQUIPMENT INSPECTIONS	22,867 inspections	83,149 inspections
TRANSMISSION EQUIPMENT INSPECTIONS	3,894 inspections	14,073 inspections
COVERED CONDUCTOR	125 circuit miles installed	556 circuit miles installed
FAST-ACTING FUSES	40 fuses installed or replaced	1,127 fuses installed or replaced
SECTIONALIZING DEVICES	1 devices installed	2 devices installed
HAZARD TREE MANAGEMENT	17,688 trees assessed	18,807 trees assessed
WEATHER STATIONS	29 weather stations installed	92 weather stations installed
HIGH-DEFINITION WILDFIRE CAMERAS	16 cameras installed	
COMMUNITY RESOURCE CENTERS	5 sites available	
COMMUNITY CREW VEHICLES	8 vehicles available throughout SCE's service area	

Map 1. High Fire Risk Areas







- Tier 2 – Elevated Fire Threat
- Tier 3 – Extreme Fire Threat
- SCE Service Area
- County Lines

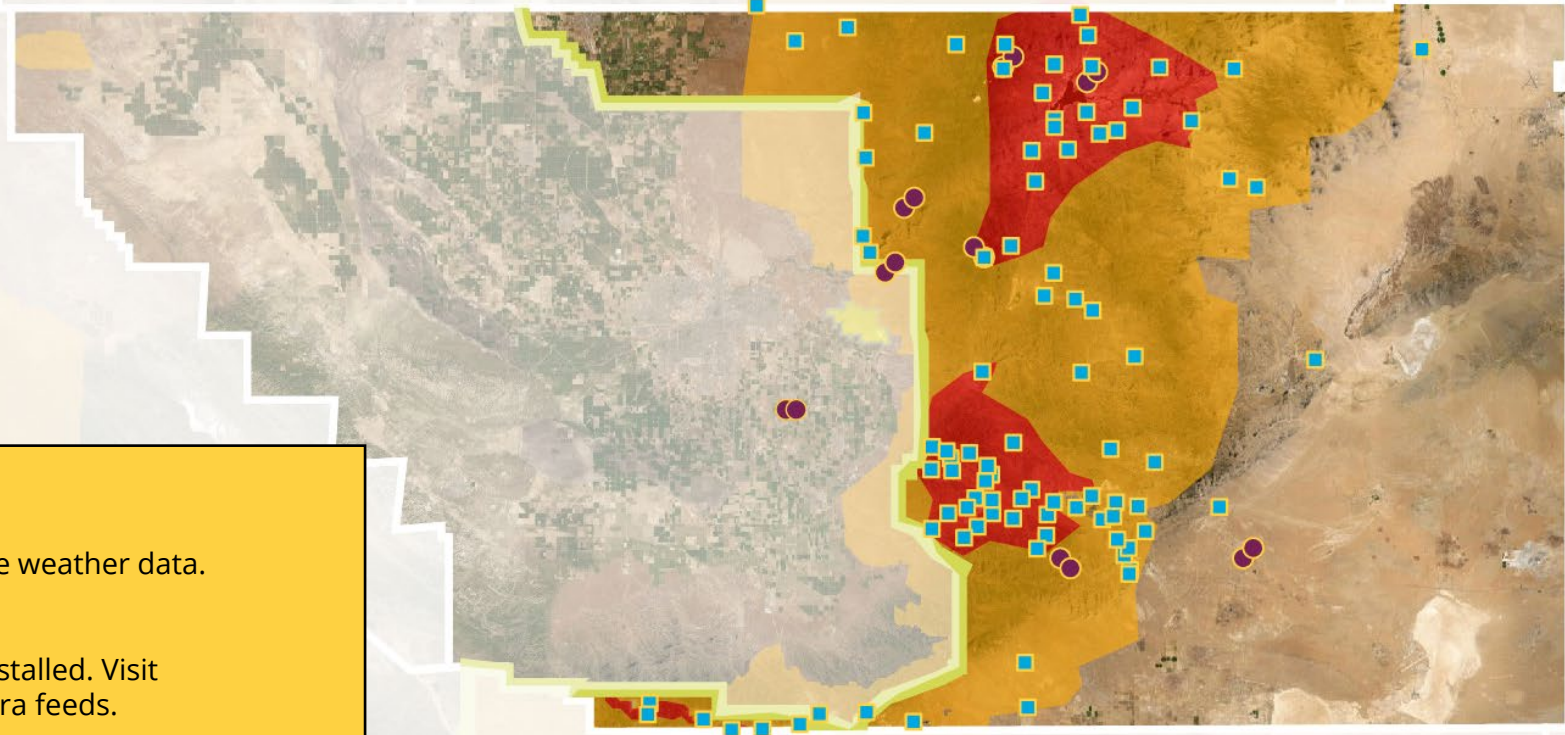


SCE tracks wildfire initiative progress by SCE districts and extrapolates to the county level as a reasonable approximation. There may be additional circuit miles of covered conductor installed due to fire restoration work.

SCE's service area covers about **55%** of Kern County. About **31,900** customer accounts are served by circuits in high fire risk areas.

Map 2. Situational Awareness

-  Weather Stations
-  HD Wildfire Cameras
-  Tier 2 – Elevated Fire Threat
-  Tier 3 – Extreme Fire Threat
-  SCE Service Area
-  County Lines



Weather Stations:

92 weather stations installed. Visit sce.com/weatherstations for real-time weather data.

HD Wildfire Cameras:

16 high-definition wildfire cameras installed. Visit alertwildfire.org to view the live camera feeds.

HELPFUL INFORMATION & RESOURCES

SCE Wildfire Webpage – [sce.com/wildfire](https://www.sce.com/wildfire)

SCE Notifications

- Sign up for PSPS alerts – [sce.com/pspsalerts](https://www.sce.com/pspsalerts)
- Sign up for the Energized by Edison Wildfire Mitigation Newsletter – energized.edison.com/newsletter

Situational Awareness

- SCE outage map – [sce.com/outagemap](https://www.sce.com/outagemap)
- PSPS information – [sce.com/psps](https://www.sce.com/psps)
- PSPS decision making – [sce.com/pspsdecisionmaking](https://www.sce.com/pspsdecisionmaking)
- Role of weather in PSPS – [sce.com/fireweather](https://www.sce.com/fireweather)
- CPUC wildfire maps – ia.cpuc.ca.gov/firemap/
- Wildfire cameras – alertwildfire.org
- Weather stations – [sce.com/weatherstations](https://www.sce.com/weatherstations)

Preparedness

- SCE emergency preparedness – [sce.com/beprepared](https://www.sce.com/beprepared)
- CAL FIRE preparedness – readyforwildfire.org

Vegetation Management

- Vegetation Management – [sce.com/safety/power-lines](https://www.sce.com/safety/power-lines); contact 1-800-655-4555 or safetrees@sce.com

Customer Programs & Rebates

- SCE Customer Programs & Resources – [sce.com/customerresources](https://www.sce.com/customerresources)
- SCE Marketplace (rebates and programs) – marketplace.sce.com
- SCE Critical Care Backup Battery Program – [sce.com/ccbb](https://www.sce.com/ccbb)
- SCE Access & Functional Needs Resources – [sce.com/afn](https://www.sce.com/afn)
- SCE Medical Baseline Program – [sce.com/medicalbaseline](https://www.sce.com/medicalbaseline)
- Self Generation Incentive Program (SGIP) – [sce.com/sgip](https://www.sce.com/sgip) or selfgenca.com
- SCE Customer Support: 1-800-655-4555

Community Meetings

- Join SCE's wildfire safety community meetings – [sce.com/wildfiresafetymeetings](https://www.sce.com/wildfiresafetymeetings)

Energized by Edison

- Stories and videos on SCE's wildfire mitigation efforts and PSPS – [edison.com/wildfire-safety](https://www.edison.com/wildfire-safety)

VIDEO: INSTALLING INSULATED WIRE AERIALLY



SOUTHERN CALIFORNIA
EDISON[®]