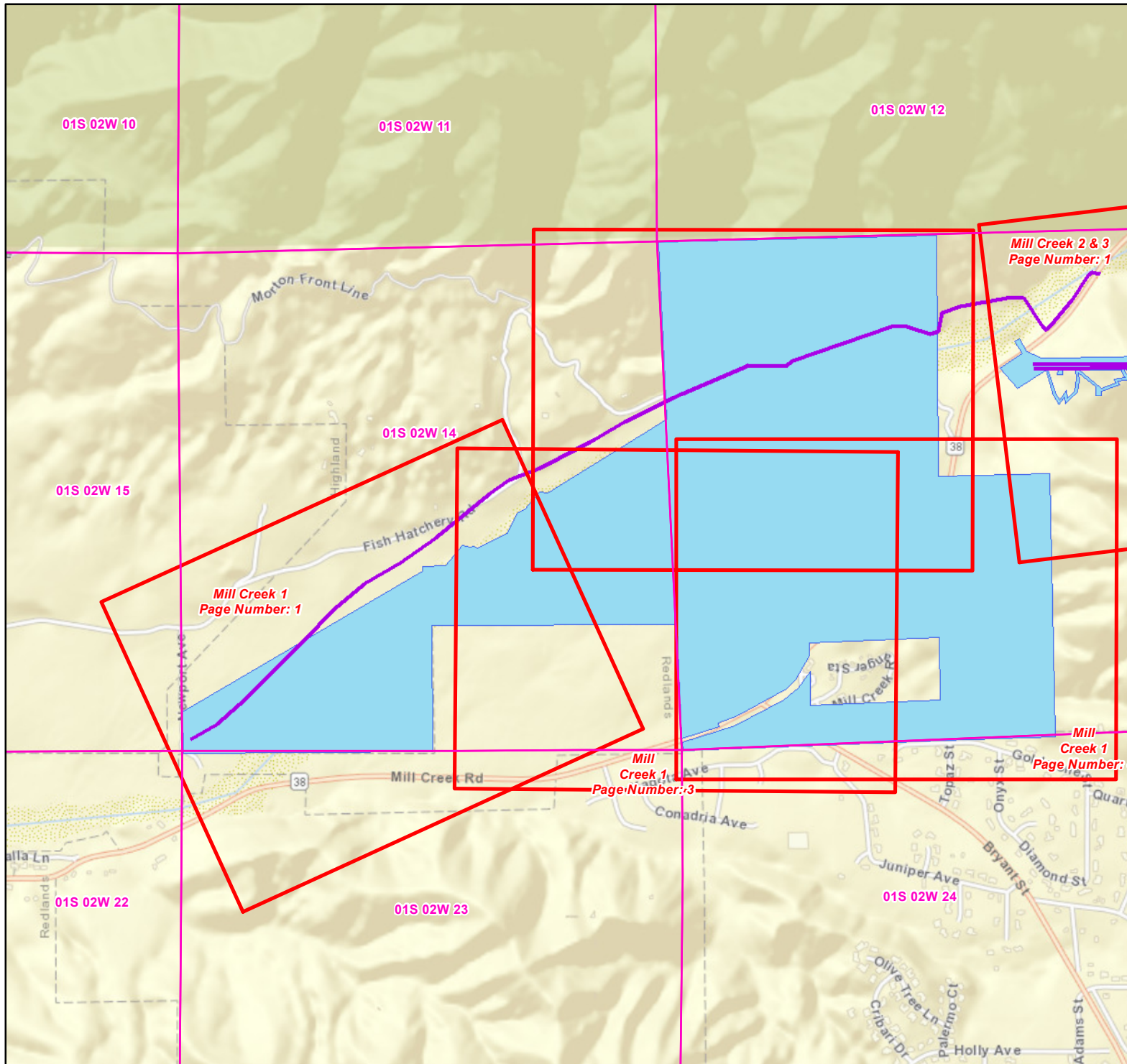




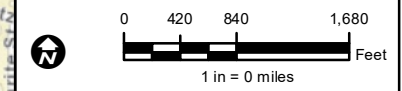


Hydro Projects Mill Creek 1



-  PLSS Sections
-  Project Map Pages
-  Penstock
-  Hydro Project Boundary



Date: 5/27/2021
 File Name: Hydro_Parcel_Maps_Overviews_20210430.mxd
 Version #:
 Created By:
Geospatial Analysis,
Geomatics | Central Field Services

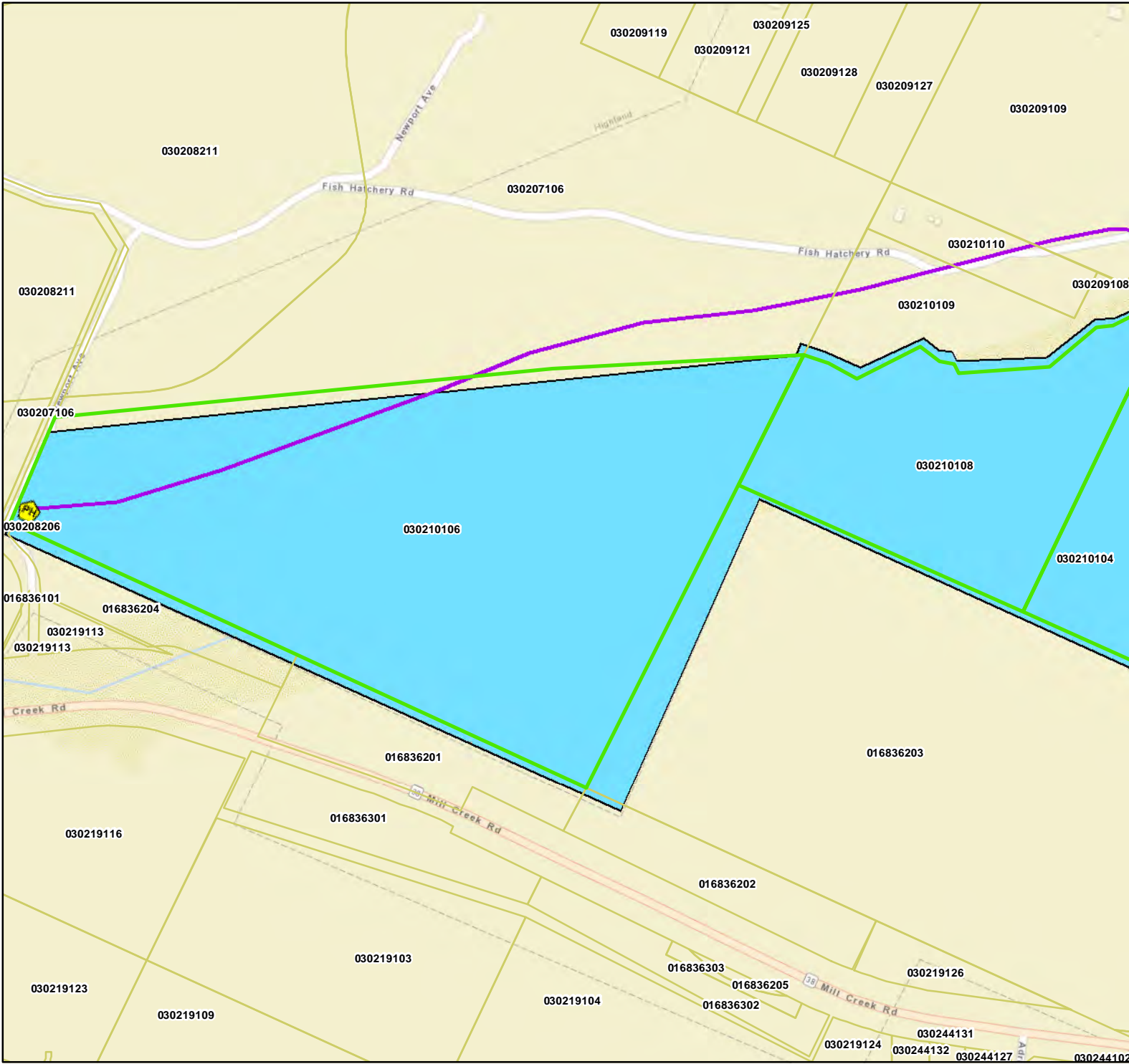
Features depicted herein are planning level accuracy, and intended for informational purposes only. Distances and locations may be distorted at this scale. Always consult with the proper legal documents or agencies regarding such features. Central Field Services

Service Layer Credits: Sources: Esri, HERE, Garmin, USGS, Intermap, INCREMENT P, NRCan, Esri Japan, METI, Esri China (Hong Kong), Esri Korea, Esri (Ireland), NGCC, (c) OpenStreetMap contributors, and the GIS User Community

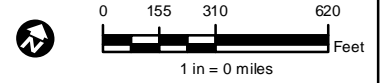
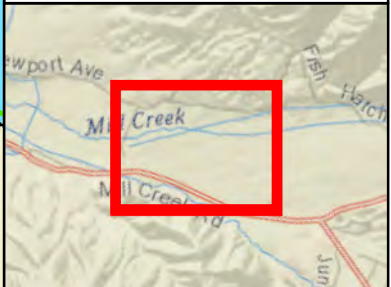


Mill Creek 1

Page Number 1



- Powerhouses
- Penstock
- Project Boundary
- SCE Parcels
- Parcels



Date: 5/20/2021
File Name: Hydro_Parcel_Maps_20210520.mxd
Version #:
Created By:
Geospatial Analysis,
Geomatics | Central Field Services

Features depicted herein are planning level accuracy, and intended for informational purposes only. Distances and locations may be distorted at this scale. Always consult with the proper legal documents or agencies regarding such features. © Central Field Services

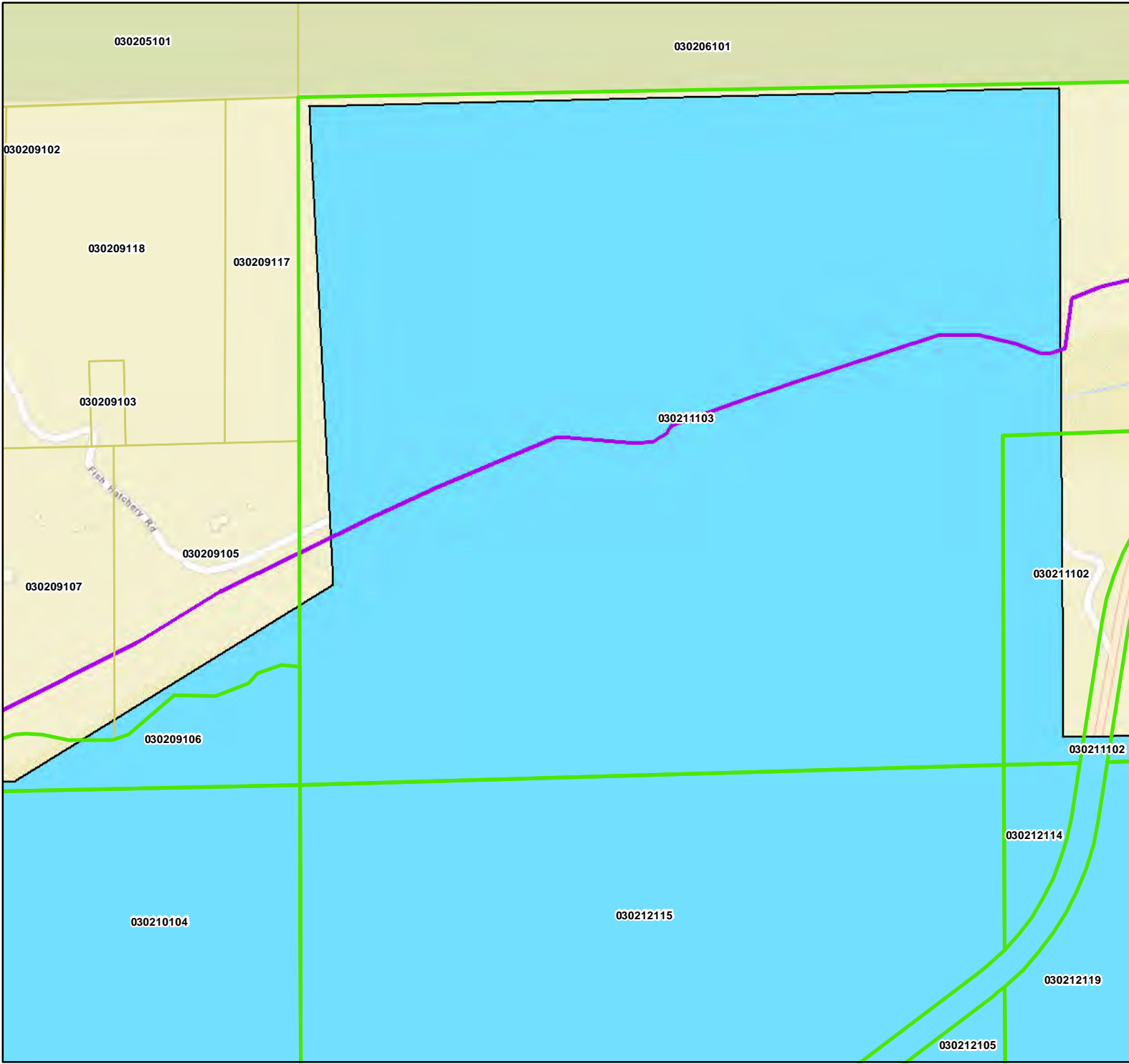
Service Layer Credits: Sources: Esri, HERE, Garmin, USGS, Intermap, INCREMENT P, NRCan, Esri Japan, METI, Esri China (Hong Kong), Esri Korea, Esri (Ireland), NGCC, (c) OpenStreetMap contributors, and the GIS User Community



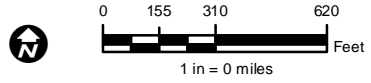
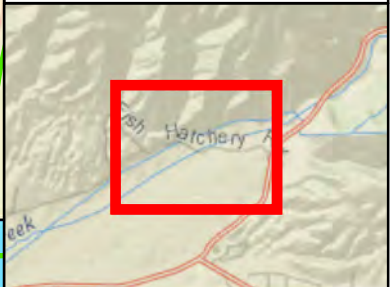
Path: P:\PROJECTS\Special_Projects\Generation\Maps\Hydro_Parcel_Maps_20210520.mxd

Mill Creek 1

Page Number 2



- Penstock
- Project Boundary
- SCE Parcels
- Parcels



Date: 5/20/2021
File Name: Hydro_Parcel_Maps_20210520.mxd
Version #:
Created By:
Geospatial Analysis,
Geomatics | Central Field Services

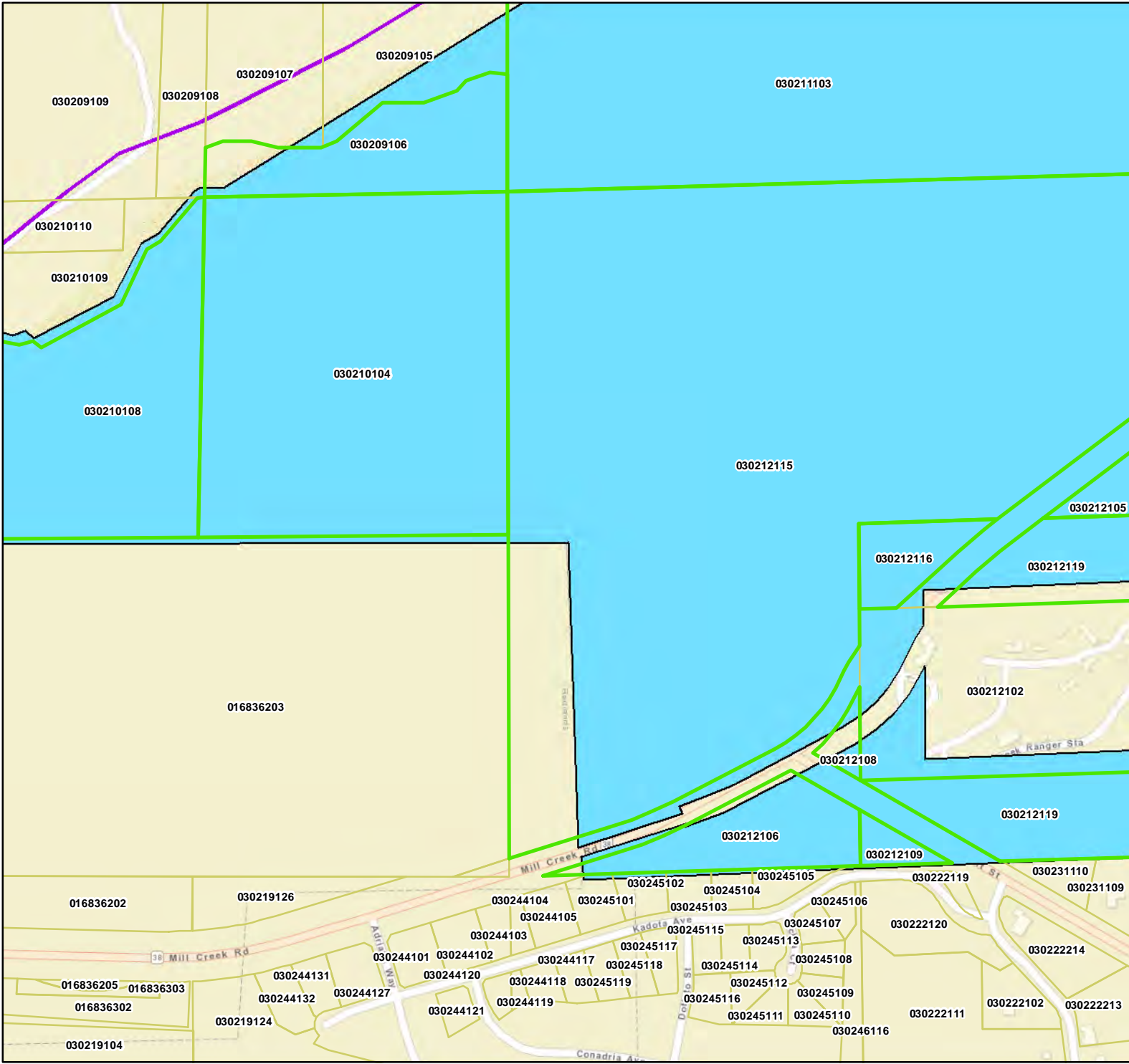
Features depicted herein are planning level accuracy, and intended for informational purposes only. Distances and locations may be distorted at this scale. Always consult with the proper legal documents or agencies regarding such features. Central Field Services





Service Layer Credits: Sources: Esri, HERE, Garmin, USGS, Intermap, INCREMENT P, NRCan, Esri Japan, METI, Esri China (Hong Kong), Esri Korea, Esri (Thailand), NGCC, (c) OpenStreetMap contributors, and the GIS User Community

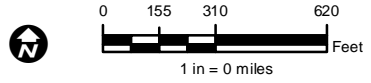


Path: P:\PROJECTS\Special_Projects\Generation\Maps\Hydro_Parcel_Maps_20210520.mxd

Mill Creek 1
Page Number 3



-  Penstock
-  Project Boundary
-  SCE Parcels
-  Parcels



Date: 5/20/2021
 File Name: Hydro_Parcel_Maps_20210520.mxd
 Version #:
 Created By:
Geospatial Analysis,
Geomatics | Central Field Services

Features depicted herein are planning level accuracy, and intended for informational purposes only. Distances and locations may be distorted at this scale. Always consult with the proper legal documents or agencies regarding such features. Central Field Services

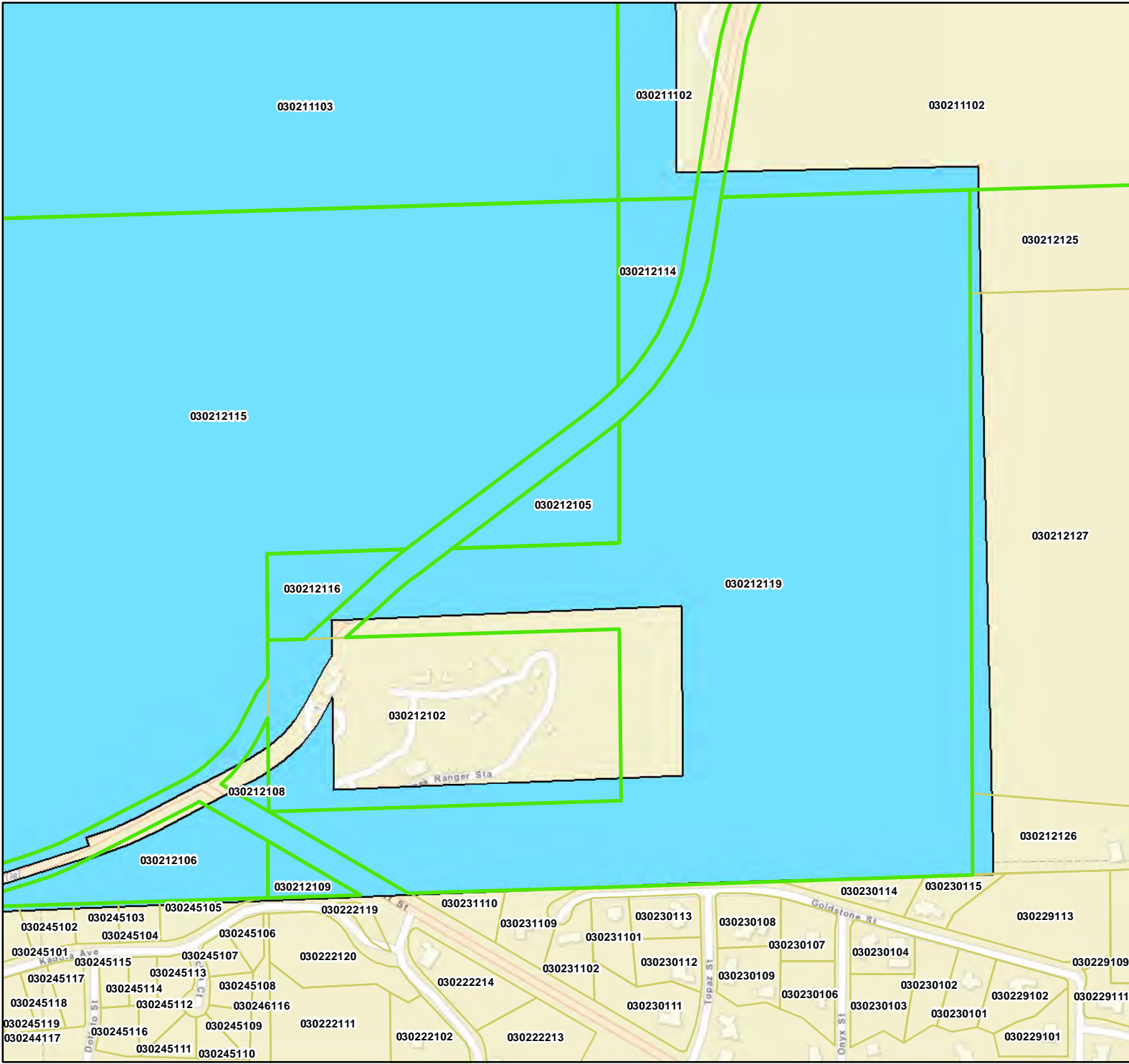
Service Layer Credits: Sources: Esri, HERE, Garmin, USGS, Intermap, INCREMENT P, NRCan, Esri Japan, METI, Esri China (Hong Kong), Esri Korea, Esri (Thailand), NGCC, (c) OpenStreetMap contributors, and the GIS User Community






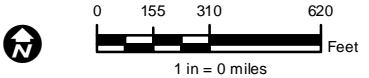
Path: P:\PROJECTS\Special_Projects\Generation\Maps\Hydro_Parcel_Maps_20210520.mxd

Mill Creek 1

Page Number 4



-  Project Boundary
-  SCE Parcels
-  Parcels



Date: 5/20/2021
File Name: Hydro_Parcel_Maps_20210520.mxd
Version #:
Created By:
Geospatial Analysis,
Geomatics | Central Field Services

Features depicted herein are planning level accuracy, and intended for informational purposes only. Distances and locations may be distorted at this scale. Always consult with the proper legal documents or agencies regarding such features. Central Field Services

Service Layer Credits: Sources: Esri, HERE, Garmin, USGS, Intermap, INCREMENT P, NRCan, Esri Japan, METI, Esri China (Hong Kong), Esri Korea, Esri (Thailand), NGCC, (c) OpenStreetMap contributors, and the GIS User Community



Path: P:\PROJECTS\Special Projects\GenerationMaps\Hydro_Parcel_Maps_20210520.mxd